

Project:

Lake County Jail - Hobart
 Dishmachine
 20 S County St
 Waukegan, IL 60085

From:

TriMark Marlinn LLC
 Steve Schmidt
 6100 W. 73rd Street, Suite 1
 Bedford Park, IL 60638
 708-496-1700
 708-496-5761 (Contact)

This Pricing is in accordance with the Sourcewell Contract #091918-TMK-
 Foodservice
 Equipment and Supplies

Item	Qty	Description	Sell	Sell Total
1	1 ea	DISHWASHER, CONVEYOR TYPE	\$50,812.85	\$50,812.85
		Hobart Model No. CLPS86EN-BAS+BUILDUP		
		Conveyor Dishwasher, (2) tank with a Power Scraper, (342) racks/hour, insulated hinged doors, .39 gallon/rack, stainless steel enclosure panels, microprocessor controls with low temperature & dirty water indicators, NSF Pot & Pan mode, programable de-lime notification, power scraper vent cowl curtain kit, ENERGY STAR®, Free factory startup for installations within a 100 mile radius of a Hobart service office; installation beyond 100 miles will be charged at the quoted rate by the local Hobart service office		
	1 ea	Oversized units with crated shipping dimensions greater or equal to 72" in length and/or 90" in height. If delivery is to a facility without a standard height dock, additional shipping charges will apply depending on the service requested. consult Factory.		
	1 ea	Standard warranty - 1-Year parts, labor & travel time during normal working hours within the USA		
	1 ea	CLPS86EN-BASELE0CD 480v/60/3-ph		
	1 ea	CLPS86EN-BASHTSTM Steam coil-stainless steel	\$7,196.83	\$7,196.83
	1 ea	CLPS86EN-BASHGTSTD Standard height		
	1 ea	CLPS86EN-BASERH0NO Without internal booster		
	1 ea	CLPS86EN-BASDIR0RL Right to left operation		
	1 ea	BDSRLCD-STDDOM RL 480/60/3 Steam Blower Dryer	\$10,789.87	\$10,789.87
	1 ea	NOTE: When blower dryer is selected, only (1) E Series vent hood (below) needed for load/soiled side vent connection; Blower Dryer assembly includes vent stack for unload/clean side vent connection. CLen Blower Dryer MUST BE DIRECT VENTED, CANNOT BE INSTALLED UNDER CANOPY HOOD		
	1 ea	CLPS86EN-BASFETSTD Standard feet		
	1 ea	SF-4576S Security Package -- CLPS86eN Lockable control box, lockable control display cover, security screws, hook-mounted curtains, lockable inspection doors	\$1,489.26	\$1,489.26
	1 ea	NOTE: For water of 3-grains of hardness or more, Hobart suggests		

Item	Qty	Description	Sell	Sell Total
		adding a water softener.		
	1 ea	DTV-CLEN Drain water tempering kit for CLEN models	\$1,233.76	\$1,233.76
	1 ea	VNTHD/E-ADJ E-series vent hood domestic (adjustable)	\$917.09	\$917.09
	1 ea	PRESREG-1/20BR 1/2" brass pressure regulator – Standard with built-in booster heater models. Regulator must be installed before the booster (built-in or remote), as the water temperature to the regulator must not exceed 140F	\$183.91	\$183.91
	1 ea	CLE/TBL-SWITCH Table limit switch CLE-Series	\$375.84	\$375.84
ITEM TOTAL:				\$72,999.41
2	1 ea	BOOSTER HEATER, STEAM Hobart Model No. BOOSTER+BUILDUP Booster Heater, steam, 10-50 PSI	\$4,030.07	\$4,030.07
	1 ea	Standard warranty - 1-Year parts, labor & travel time during normal working hours within the USA		
	1 ea	BOOSTER-ELE0FT 100-120v/50v/60/1-ph		
	1 ea	BOOSTER-TYP150 150-1 booster		
ITEM TOTAL:				\$4,030.07
DLV	1 ea	INBOUND/OUTBOUND FREIGHT FREIGHT Model No. FRTDLV Delivery of the above unit factory crated to a dock on site. Removal and disposal of old unit from dock. Delivery and pick up to be scheduled at same time.	\$500.00	\$500.00
ITEM TOTAL:				\$500.00
Total				\$77,529.48

No accessories included unless noted. Cost of inbound freight to be determined unless noted
Delivery and set in place is not included unless noted. All final connections by others.

Pricing good for 30 days.

If the job site is not ready at the time of initial scheduled delivery, re-delivery and/or storage charges will apply. There will be a 2% per month warehouse charge in all situations where payment is not received per agreement or within 10 days of projected delivery date.

PLEASE NOTE: OUR BID DOES NOT INCLUDE ANY PLUMBING, ELECTRICAL, CARPENTRY, OR HVAC WORK, EITHER "ROUGH-IN" OR "FINAL CONNECTIONS" (UNLESS SPECIFICALLY NOTED OTHERWISE).

This Quote shall be subject to TriMark's Terms of Sale

<http://www.trimarkusa.com/SiteMedia/SiteResources/Terms/TriMark-Terms-of-Sale.pdf>
which are incorporated herein by reference and shall govern. The parties specifically agree that no signature shall be required in order for this Quote or its applicable terms and conditions to be deemed legally binding and enforceable on Customer where the intent to be so bound can be inferred (including by acceptance or retention of products or services), notwithstanding contrary requirements under any law.

I understand and accept the above terms and conditions.

Signature _____ Date _____

Return Policy –

A. Stock Supplies and Light Equipment = No charges or fees

B. Stock Heavy Equipment = Original charges for freight and/or Deliver and Set

C. Non-Stock Supplies and Light Equipment = 30% of sales price exclusive of sales tax, plus

freight.

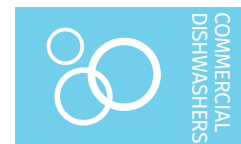
Acceptance: _____ Date: _____

Printed Name: _____

Project Grand Total: \$77,529.48

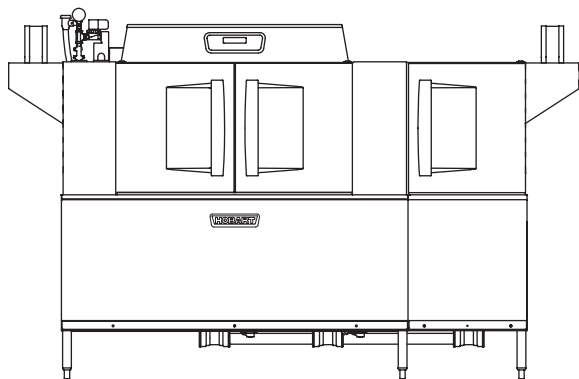


Project _____
 AIA # _____ SIS # _____
 Item # _____ Quantity _____ C.S.I. Section 114000



CLPS86eN-BAS ELECTRIC

High Temperature Rack Conveyor Dishwashing Machine



SPECIFIER STATEMENT

Specified dishwasher will be Hobart CLPS86eN Base electric tank heat model with Opti-Rinse™. Includes 342 racks per hour capacity, 22" power scrapper, insulated ergonomic cabinet style doors, dirty water indicator, configurable "intelligent" de-lime notification, top mounted computer controls, and NSF approved pot and pan cycle mode. The wash tank utilizes durable precision pressure sensor monitors in lieu of conventional mechanical floats. The 19.5" standard chamber height will accommodate up to (6) standard sheet pans at a time on an open-end sheet pan rack.

STANDARD FEATURES

- + 342 racks per hour
- + 22" power scrapper plus separate wash and rinse tanks
- + Opti-Rinse™ system
- + Rapid return conveyor drive mechanism
- + Large double door opening for ease of cleaning
- + Doors are insulated & hinged with door interlock switches
- + 19.5" chamber height opening (accepts sheet pans)
- + Top mounted micro-processor control module
- + Energy saver mode (programmable auto-shut down)
- + Dirty water indicator
- + Manager activated low temperature alert
- + NSF rated configurable pot and pan dwell mode
- + Configurable "intelligent" delime notification
- + Service diagnostics
- + Self-aligning wash manifolds
- + Stainless steel anti-clogging wash arms
- + Removable pump intake screen
- + Stainless steel self-draining pump and impeller
- + Single, sloping scrap screen and deep scrap basket
- + Stainless panels enclose perimeter and bottom
- + Door actuated drain closure
- + Convertible hot water or low temp final rinse
- + Vent fan control
- + Booster heater control
- + Power scrapper vent cowl curtain kit
- + ENERGY STAR® Certified

OPTIONS & ACCESSORIES (Available at extra cost)

- ☐ Standard, short, and extended stainless steel vent hoods
- ☐ Internal stainless steel pressure-less 30 kW booster heater field convertible to 15 kW (booster includes PRV)
- ☐ Direct drive unloader – adds 38" length. Reference spec F39520 for more details
- ☐ Side loader – SL23 adds 23" length, SL30 adds 30" length. Reference specs F40926 and F40927 for more details
- ☐ Blower-dryer – adds 33¾" to length. Reference spec F40252 for more details (ships separate from dishmachine, contact Hobart Service for installation)
- ☐ Drain water tempering kit (field installed)
- ☐ Flanged feet kit (requires two kits)
- ☐ Higher than standard chamber (24" opening)
- ☐ Table limit switch with 10' wire
- ☐ Correctional package (contact Hobart for details)
- ☐ Pressure regulator valve (PRV), for use with external booster
- ☐ Water shock absorber kit
- ☐ Factory-mounted circuit breakers (contact Hobart for details)
- ☐ Common electrical connection (see page 4)

CLEAN SERIES – CLPS86eN-BAS ELECTRIC

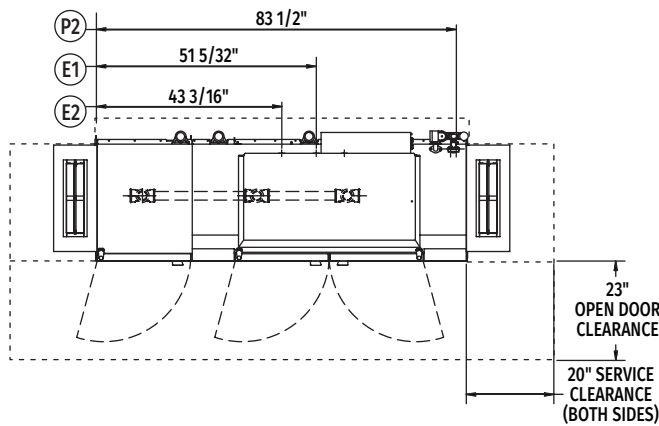
Approved by _____ Date _____ Approved by _____ Date _____



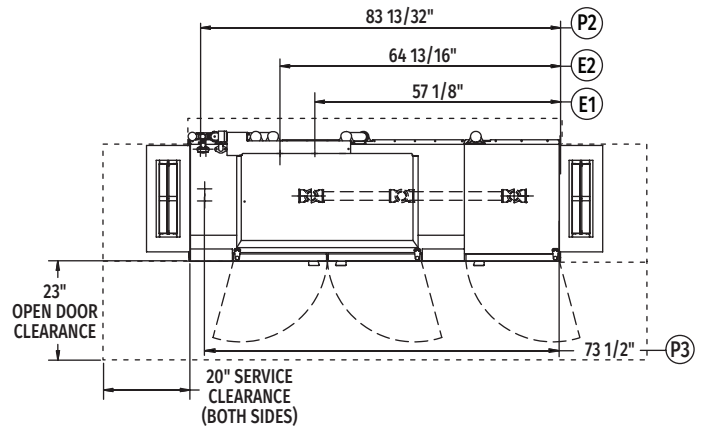
CLPS86eN-BAS ELECTRIC

High Temperature Rack Conveyor

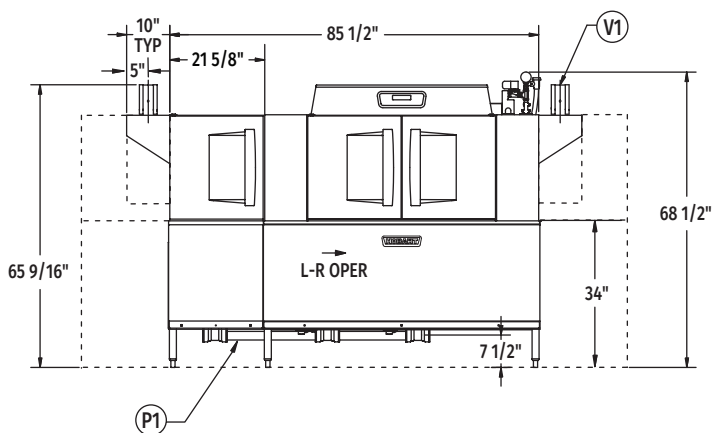
Dishwashing Machine



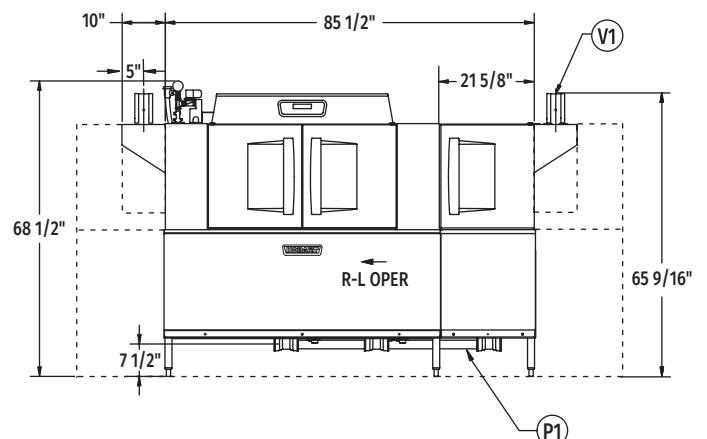
Top View Left to Right



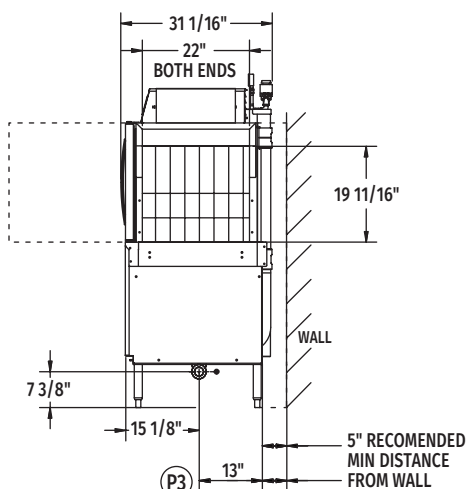
Top View Right to Left



Front View Left to Right

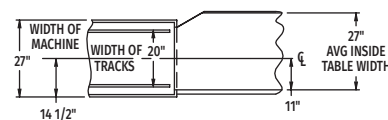


Front View Right to Left

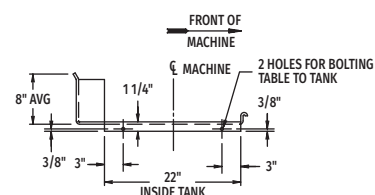


Side View

Tabling Connection: 86" inside tank (at table connection)



Suggested Track and Table Layout



View Showing Hole Locations in Turned Down Portion of Table

MODEL:
CLPS86eN BASE
L-R OPERATION
D-974811
REV B

MODEL:
CLPS86eN BASE
R-L OPERATION
D-974810
REV B



CLPS86eN-BAS ELECTRIC

High Temperature Rack Conveyor Dishwashing Machine

LEGEND

Electrical Connections	
E1	Motors, controls, and electric tank heat 1-1/4" or 2" conduit, 63-3/4" AFF.
E2	Internal electric booster 1-1/4" or 2" conduit, 63-3/4" AFF.
NOTE: Common electrical connection (single point) available, see page 4 for details.	
Plumbing Connections	
P1	Drain. May be drained to either side of valve, plug opposite side 2" FPT. Recommend a floor drain minimum of 12" from machine for access and maintenance. 7-3/8" AFF.
P2	Hot water. 1/2" FPT connection. 1/2", 11-3/16" AFF. See plumbing notes for required temperatures.
P3	Optional cold water connection for drain water tempering 1/2" FPT, cold water temperature 80°F, maximum 7-3/8" AFF.
Vent Connections	
V1	Optional vent hoods, 4" x 16" vent stack with damper.

E1	Electrical Connection (3 PH only) Motor, Power Wash Tank, Electric Rinse Tank Heat, Electric Wash Tank Heat and Final Rinse		
	Voltage	Rated Amps	Minimum Supply Circuit Ampacity
	208/60/3	96.2	125
	240/60/3	92.0	125
	480/60/3	47.6	60
	600/60/3	34.5	50
NOTE: Electric tank heat can be split from motors & controls, see page 4 for details.			

Dishmachine not provided with internal GFCI protection.

NOTE: Additional CLeN Voltages and Amperages are available, see document F40972.

WARNING: Plumbing and electrical connections should be made by qualified personnel who will observe all the applicable plumbing, sanitary, safety codes and National Electrical Code.

Plumbing Notes: Minimum incoming water temperatures: 110°F for 30kW internal booster, 140°F for 15kW field converted internal booster, 180°F without internal booster. Building flowing water pressure to dish machine is 20 PSI, (+/- 5 PSI). For non-booster machines, a PRV with internal expansion bypass is required. When ordered as an accessory, 1/2" brass regulator must be installed before the booster. Water temperature to the regulator must not exceed 140°F. Recommended water hardness to be 3 grains or less for best results.

SPECIFICATIONS

Capacities

Racks per Hour (NSF rated)	342
Wash Tank (U.S. gallons).	23
Rinse Tank (U.S. gallons)	22
Power Scraper (U.S. gallons)	23
Conveyor Speed (feet per minute).	9.5

Motor Horsepower

Drive	1/6
Wash	2
Power Scraper	2
Rinse	2

Water Consumption

U.S. Gallons per Hour (maximum use at 20 PSI).	132
U.S. Gallons per Rack	0.39
Peak Drain Flow (U.S. gallons per minute).	38

Heating

Tank Heat, Electric (kW)	25
Optional Electric Booster (built-in) (kW for 40°F rise).	15
Optional Electric Booster (built-in) (kW for 70°F rise).	30

Venting

Load End (minimum CFM).	200
Unload End (minimum CFM).	400

Shipping Weight (approximate) 991 lbs.

Crated Dimensions. 96"L x 38"W x 78"H

E2	Booster Heat 30 kW (Standard) Minimum 110°F Incoming Water		
	Voltage	Rated Amps	Minimum Supply Circuit Ampacity
	208/60/3	83.9	90
	240/60/3	80.2	90
	480/60/3	40.1	50
	600/60/3	26.9	40

E2	Booster Heat 15 kW (Field Convertible) Minimum 140°F Incoming Water		
	Voltage	Rated Amps	Minimum Supply Circuit Ampacity
	208/60/3	45.0	60
	240/60/3	40.1	50
	480/60/3	20.0	25
	600/60/3	13.5	20

CLPS86eN-BAS Electric Heat Dissipation		
Booster	BTU/HR.	
	Latent	Sensible
Without Booster	25,900	11,100
15kW Booster	39,400	16,900
30kW Booster	53,000	22,700



CLPS86eN-BAS ELECTRIC

High Temperature Rack Conveyor
Dishwashing Machine

COMMON ELECTRICAL CONNECTION (SINGLE POINT) – CONTACT FACTORY FOR ADDITIONAL INFORMATION

Common Electrical Connection (Includes Motors & Controls, Electric Wash Tank Heat, Electric Rinse Tank Heat & Electric Booster Heater)						
Voltage	MACHINE AND 15kW BOOSTER			MACHINE AND 30kW BOOSTER		
	Rated Amps	Minimum Supply Circuit Ampacity	Maximum Protective Device	Rated Amps	Minimum Supply Circuit Ampacity	Maximum Protective Device
208/60/3	141	175	175	180.1	200	200
240/60/3	132	150	150	172	200	200
480/60/3	68	80	80	88	100	100
600/60/3	48	70	70	61.4	90	90

FIELD CONVERTIBLE SERVICE CONNECTIONS

At time of installation, service connections for motors, controls, and electric tank heat can be split as necessary for installation.

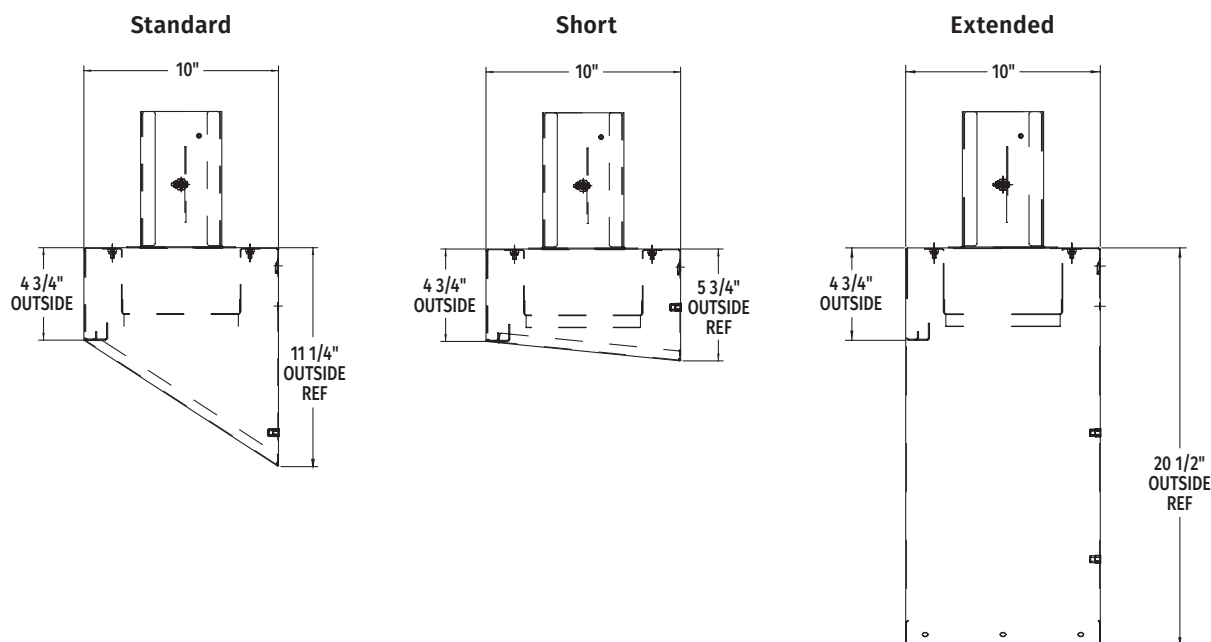
Separate Service Connection for Electric Heat			
Voltage	Rated Amps	Minimum Supply Circuit Ampacity	Maximum Protective Device
208/60/3	45.0	60	60
240/60/3	43.0	60	60
480/60/3	22.0	30	30
600/60/3	14.4	20	20

Separate Service Connection for Motors & Controls			
Voltage	Rated Amps	Minimum Supply Circuit Ampacity	Maximum Protective Device
208/60/3	21.2	30	30
240/60/3	20.5	30	30
480/60/3	11.8	15	15
600/60/33	10.5	15	15

Separate Service Connection for Electric Rinse Tank Heat			
Voltage	Rated Amps	Minimum Supply Circuit Ampacity	Maximum Protective Device
208/60/3	30	40	40
240/60/3	28.6	40	40
480/60/3	14.3	20	20
600/60/3	9.6	15	15

NOTE: Additional CLen Voltages and Amperages are available, see document F40972.

VENT HOOD OPTIONS (Adjustable, vent stack can be adjusted 1" to either side)



As continued product improvement is a policy of Hobart, specifications are subject to change without notice.



Project _____
 AIA # _____ SIS # _____
 Item # _____ Quantity _____ C.S.I. Section 114000



STEAM BLOWER-DRYER ACCESSORY For CLeN Series



For use with
CLeN Series Dishwashers

STANDARD FEATURES

- + Stainless steel 33" long chamber
- + Positive forced circulation of high velocity heated air
- + Fits CLeN models
- + High velocity industrial type blower-dryer is quiet, giving truly high performance at a low sound level
- + 2 H.P. blower
- + 55 lbs. per hour steam consumption

DIRECTION OF OPERATION

- ☐ Right to Left
- ☐ Left to Right

VOLTAGE

- ☐ 480/60/3
- ☐ 208-240/60/3
- ☐ 240/60/3
- ☐ 380/60/3
- ☐ 600/60/3
- ☐ 200-240/50/3

SPECIFIER STATEMENT

Designed to promote rapid drying of tableware and trays by forced circulation of high velocity heated air through the blower dryer. Heavy-duty direct drive industrial fan blows room air through a steam coil and large area ducting. Heated air directed vertically downward to drying area through rectangular orifice covering full width of chamber. Baffles below conveyor redirect air upward within drying area and minimize heating of discharge table or hot air contact with clean-dish operator at end of machine. Any object which will pass through the machine will be handled at the dryer area without necessity of readjusting blower plenum upward or downward.

CLEAN SERIES – STEAM BLOWER-DRYER ACCESSORY

Approved by _____ Date _____ Approved by _____ Date _____



STEAM BLOWER-DRYER ACCESSORY

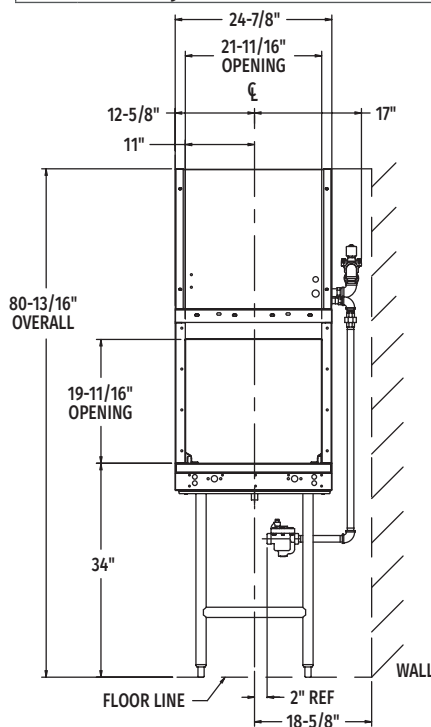
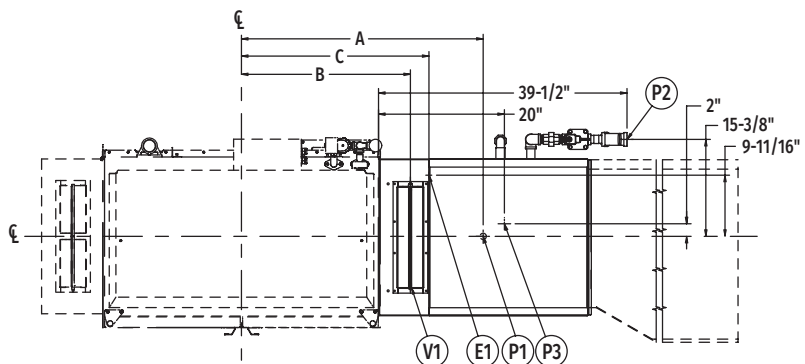
For CLeN Series

(Left to Right)

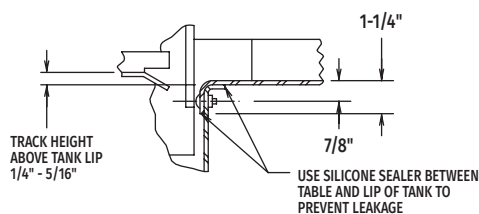
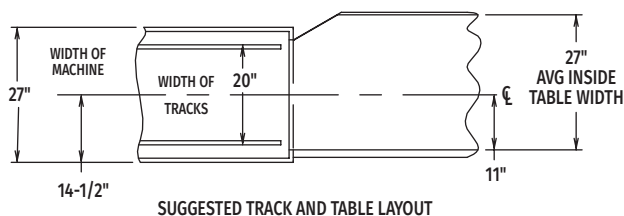
LEGEND

Electrical Connections	
E1	Electric connection: 1-1/8" conduit hole provided, remove plug to use. 61" AFF.
Plumbing Connections	
P1	Drain connection in dryer tank: 1" FPT.
P2	Steam supply connection: 1" FPT, 64-7/8" AFF.
P3	Steam condensate return connection: 3/4" FPT. (Bucket type traps furnished), 22" AFF.
Vent Connections	
V1	Vent connection: (must fit inside) 4" x 16" vent stack, 400 C.F.M. exhaust.

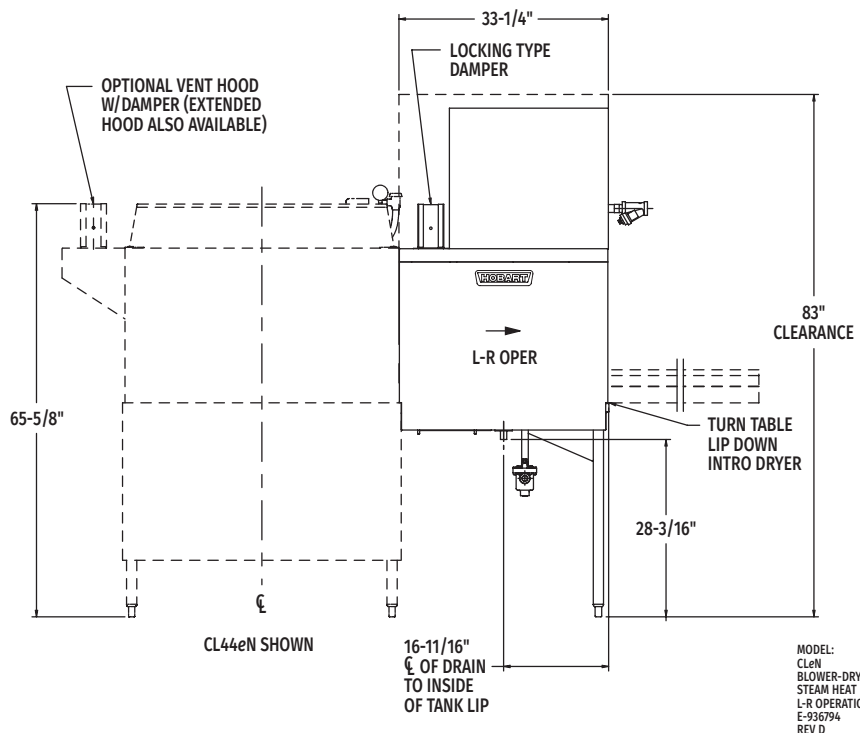
NOTE: Canopy hood installation cannot be used with blower dryer.



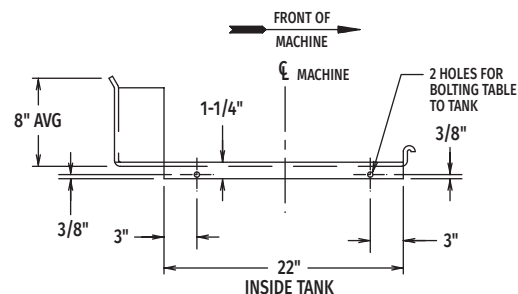
SHOWN WITHOUT CLeN MACHINE



UNLOAD END



MODEL:
CLeN
BLOWER-DRYER
STEAM HEAT
L-R OPERATION
E-936794
REV D



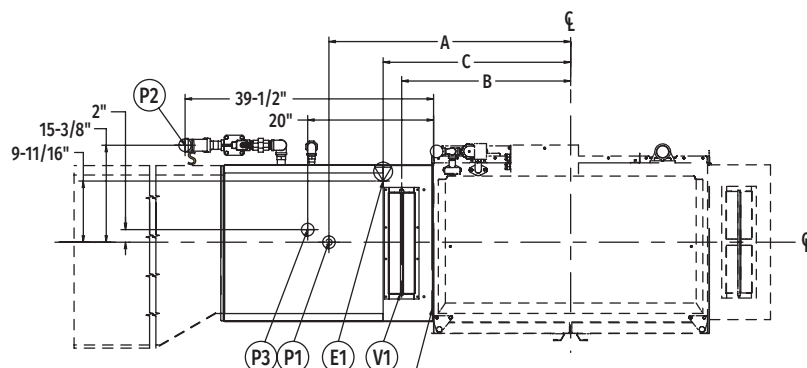
VIEW SHOWING HOLE LOCATIONS IN TURNED DOWN PORTION OF TABLE



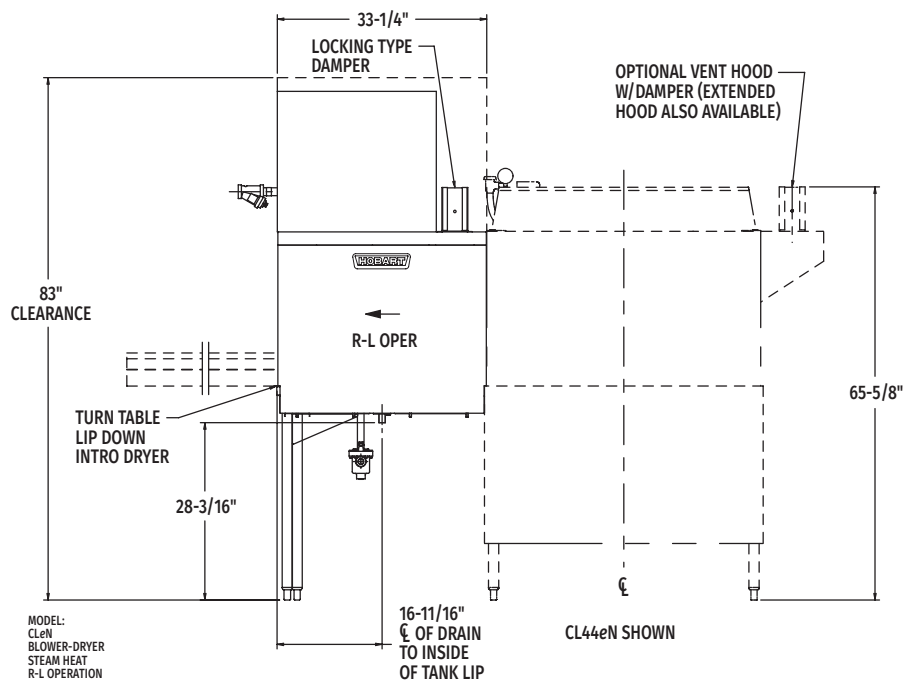
STEAM BLOWER-DRYER ACCESSORY

For CLeN Series

(Right to Left)

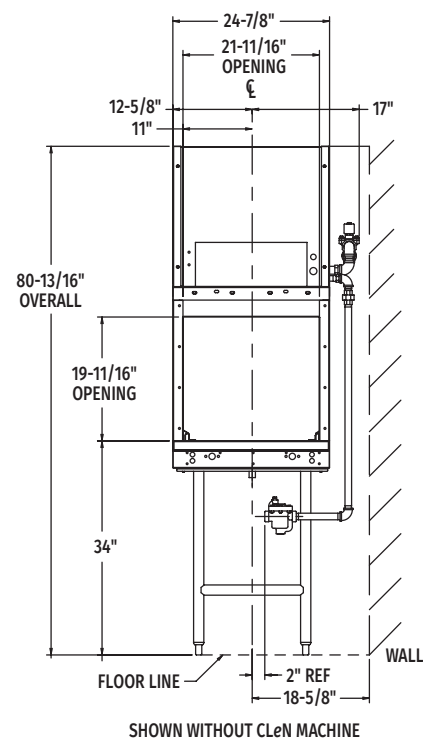


DRYER CHAMBER TO BE BOLTED TO WASH CHAMBER WITH 1/4"-20 X 5/8" HEX HEAD STAINLESS STEEL SCREWS THRU (19) 11/32" DIA. MATCHING HOLES. USE FOAM TAPE (1" WIDE X .060 THICK) AS A GASKET TO SEAL THIS JOINT.



MODEL:
CLeN
BLOWER-DRYER
STEAM HEAT
R-L OPERATION
E-936793
REV D

CL44eN SHOWN



Single Point Electrical Connection Blower Motor & Steam Heat (3 PH only)			
Electrical Specs	Rated Amps	Minimum Supply Circuit Ampacity	Maximum Protective Device
208/60/3	4.5	15	15
240/60/3	4.5	15	15
380/60/3	2.6	15	15
480/60/3	2.6	15	15
600/60/3	2.1	15	15
200-240/50/3	4.5	15	15
380-415/50/3	2.6	15	15

Model	Dimension A	Dimension B	Dimension C
CL44eN	38-7/16"	26-3/4"	29-13/16"
CLPS66eN	38-7/16"	26-3/4"	29-13/16"
CLCS66eN	38-7/16"	26-3/4"	29-13/16"
CL54eN	48-3/16"	36-5/8"	39-9/16"
CLPS76eN	48-3/16"	36-5/8"	39-9/16"
CLCS76eN	48-3/16"	36-5/8"	39-9/16"
CL64eN	48-7/16"	36-3/4"	39-13/16"
CLPS86eN	48-7/16"	36-3/4"	39-13/16"
CLCS86eN	48-7/16"	36-3/4"	39-13/16"

WARNING: Electrical and grounding connections must comply with the applicable portions of the National Electrical Code and/or other local electrical codes.

Plumbing connections must comply with applicable sanitary, safety and plumbing codes.

Notes:

1. All dimensions taken from floor line may be increased approximately 3/4" or decreased 1/2".
2. For dimensions of dishwashing machine not shown, see installation drawing of machine used.
3. Blower motor controller is controlled from dishwasher motor control box and operates with dishwasher pump motors.



STEAM BLOWER-DRYER ACCESSORY

For CLeN Series

Construction: Chamber construction is stainless steel, welded and bolted. Vent is 4" x 16" inside dimension and contains a locking type control damper.

Stainless steel wrap-around encloses entire external component assembly consisting of steam coils, motor and blower. Blower dryer is approximately 17 $\frac{3}{8}$ " above height of machine.

Tank portion is constructed of stainless steel with legs and lower cross-members of 1 $\frac{1}{2}$ " stainless steel tubing and stainless steel adjustable feet.

Conveyor is Hobart "Dual Drive" with stainless steel pawls, designed to connect to CLeN warewasher.

Steam Coils: One double rowed heavy-duty high efficiency aluminum finned copper tube type heat exchanger. The steam blower comes with one of each of the following connections: a 1 inch female I.P.S. steam, and a $\frac{3}{4}$ inch I.P.S. steam condensate connection. Steam requirements are 55 lbs. at 20 psi. Maximum steam pressure 25 psi.

Blower: Industrial fan-type with direct drive wheel. Housing of welded construction.

2 H.P. Blower direct drive motor. Exhaust requirement is 200 to 400 CFM.

Motor: Splashproof enclosure, ventilated design. Furnished only in three-phase electrical specifications of the basic CLeN Model in 208-240/60 and 480/60. The controller circuit operates on 115 volts supplied by the transformer on the dishwasher.

Motor Control: Ambient temperature compensated automatic resetting solid state overload protection, pre-wired. Operation controlled by dishwasher motor switch, i.e. blower functions only during machine operation.



Project _____
 AIA # _____ SIS # _____
 Item # _____ Quantity _____ C.S.I. Section 114000



STEAM BOOSTER HEATER

For All Door-Type and Conveyor Models

	AM15 AM15T AM15F	CL44eN CLPS66eN CLCS66eN	CL54eN CLPS76eN CLCS76eN	CL64eN CLPS86eN CLCS86eN
Flowing Steam Pressure	Booster No.	Booster No.	Booster No.	Booster No.
10-45	150	150	150	150
Steam Consumption lb./hr.	25	60	65	63

Note 1: Available electrical specification is 100-120/50/60/1. This voltage range can be powered by all CL models and controls produced since 2006 and all AM models and controls since 1992. If there is a unique need where 240V is still required, the 120V model can be field modified to 240V. Contact Hobart Service for required parts and instructions.

Note 2: Booster sizing based on 20 P.S.I. water flow pressure. Set pressure reducing valve under flow conditions. If a booster capacity larger than 150 is needed, contact the product line

Note 3: All sizes based on 110°F minimum incoming water temperature raised to 185°F (75°F temperature rise).

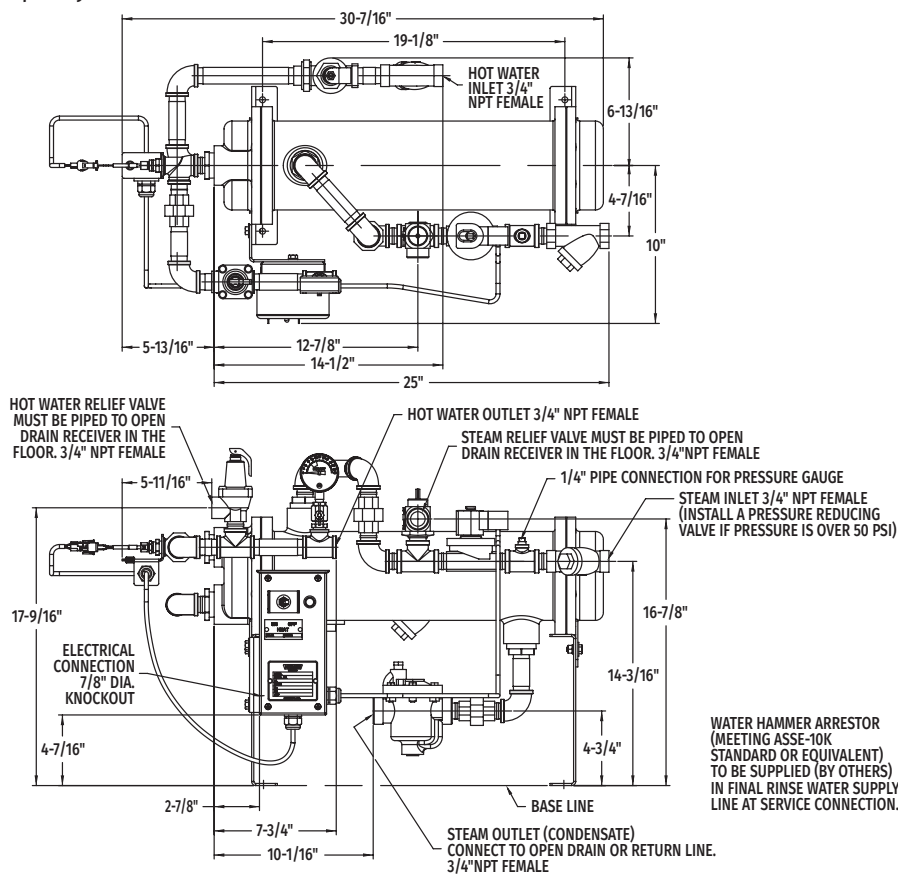
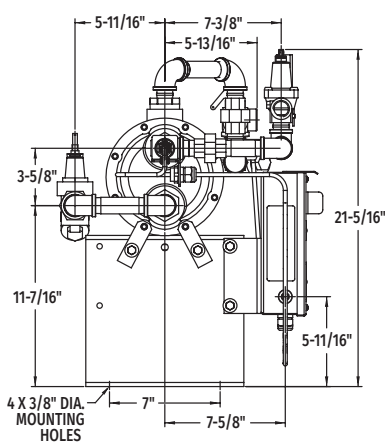
Note 4: Maximum steam pressure 45 P.S.I.

Steam boosters are typically connected to the control box. A separate service connection rated at the above electrical specification can be used. Protection device rated at 15 amperes maximum (by others).

The steam booster is electrically controlled by means of a manual off-on switch, solid state thermostat and solenoid valve. Included are line strainers and pressure relief valves on both steam and hot water lines, a hot water pressure regulator with pressure gauge and a bucket type steam trap. When operated within the stated range of steam and water pressures the recommended size booster will provide required quantities of final rinse water with machine operating at maximum capacity.

WARNING: Electrical and grounding connections must comply with the applicable portions of the National Electrical Code and/or other local electrical codes.

Plumbing connections must comply with applicable sanitary, safety and plumbing codes.



As continued product improvement is a policy of Hobart, specifications are subject to change without notice.

[CAD and/or Revit Files Available](#)

Approved by _____ Date _____ Approved by _____ Date _____