



Paratransit Update

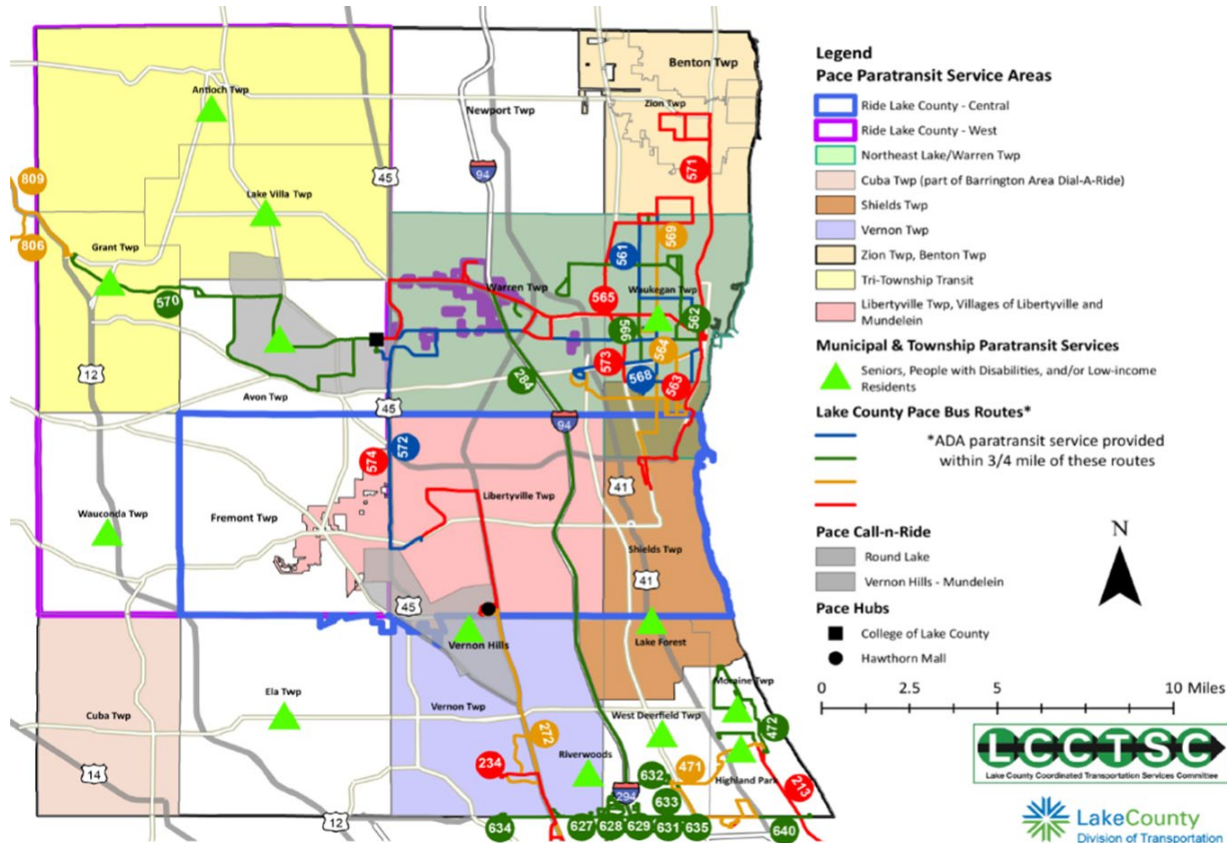
Public Works, Planning and Transportation Committee

Division of Transportation

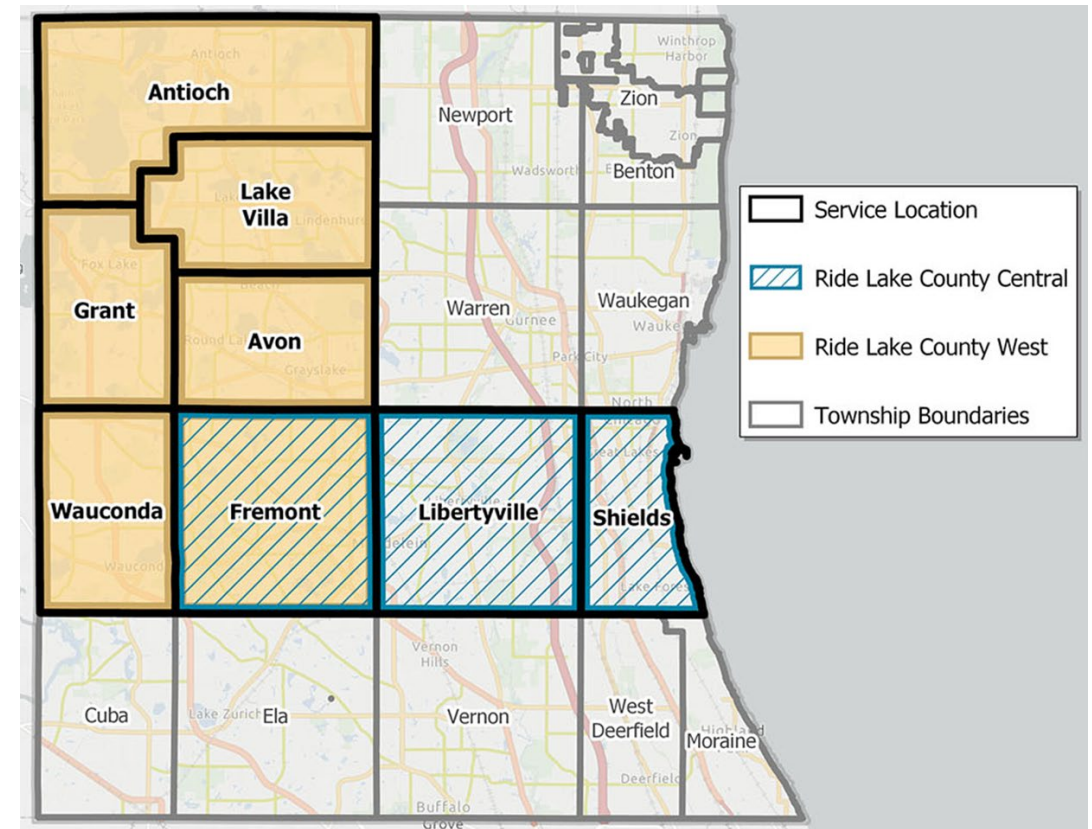
April 7, 2021

Background

Non-Fixed Route Services



Ride Lake County Services



Background

- **2016 Paratransit Policy (PWT Endorsed)**
 - Directed phased reductions in county contributions and annual maximum county costs of \$500,000
- **Paratransit Market Study (2016-2019) to research paratransit operations and best practices nationwide**
 - #1 Recommendation: identify a lead agency to help coordinate a new regional paratransit service model
- **Lead Agency Working Group created by the County Board in 2019**
 - Working Group held seven meetings in 2019 and 2020
 - Heard from other counties paratransit programs
 - Recommendation:
Lake County Government serve as Executive Sponsor in a new countywide service model and on a new Ride Lake County Committee, to be made up of local funding sponsors and service providers that will be created and replace the Lake County Coordinated Transportation Services Committee (LCCTSC).

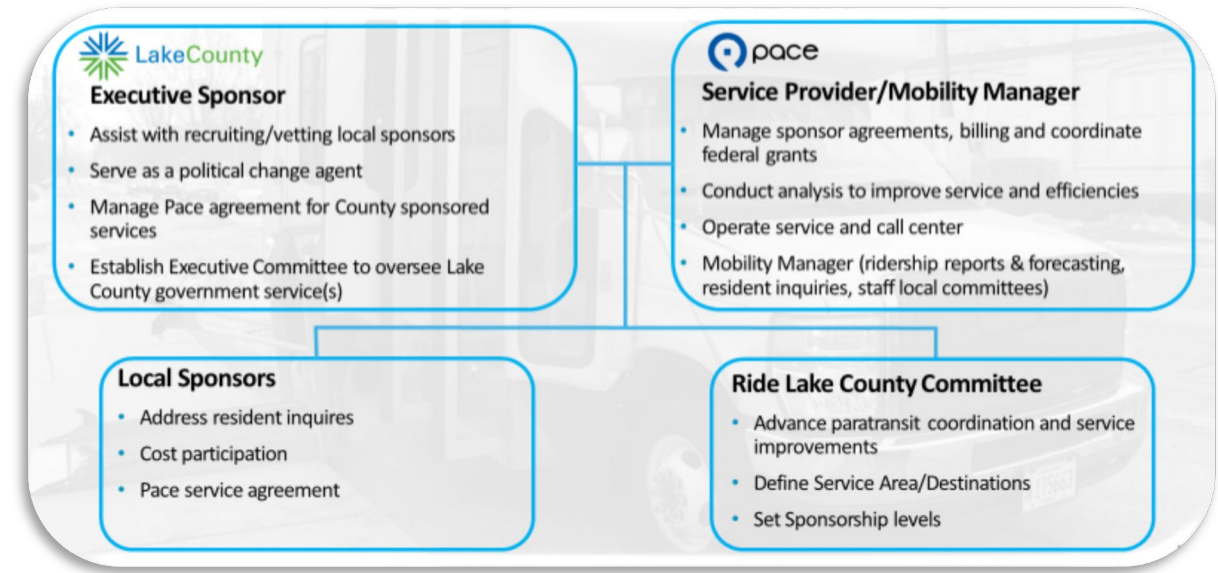
Pace Discussions (Jan. 2021)

- **Discussed New Service Model**

- Lake County serves as Executive Sponsor
- Pace to operate service, roll in legacy subsidies, manage local agreements and act as mobility manager

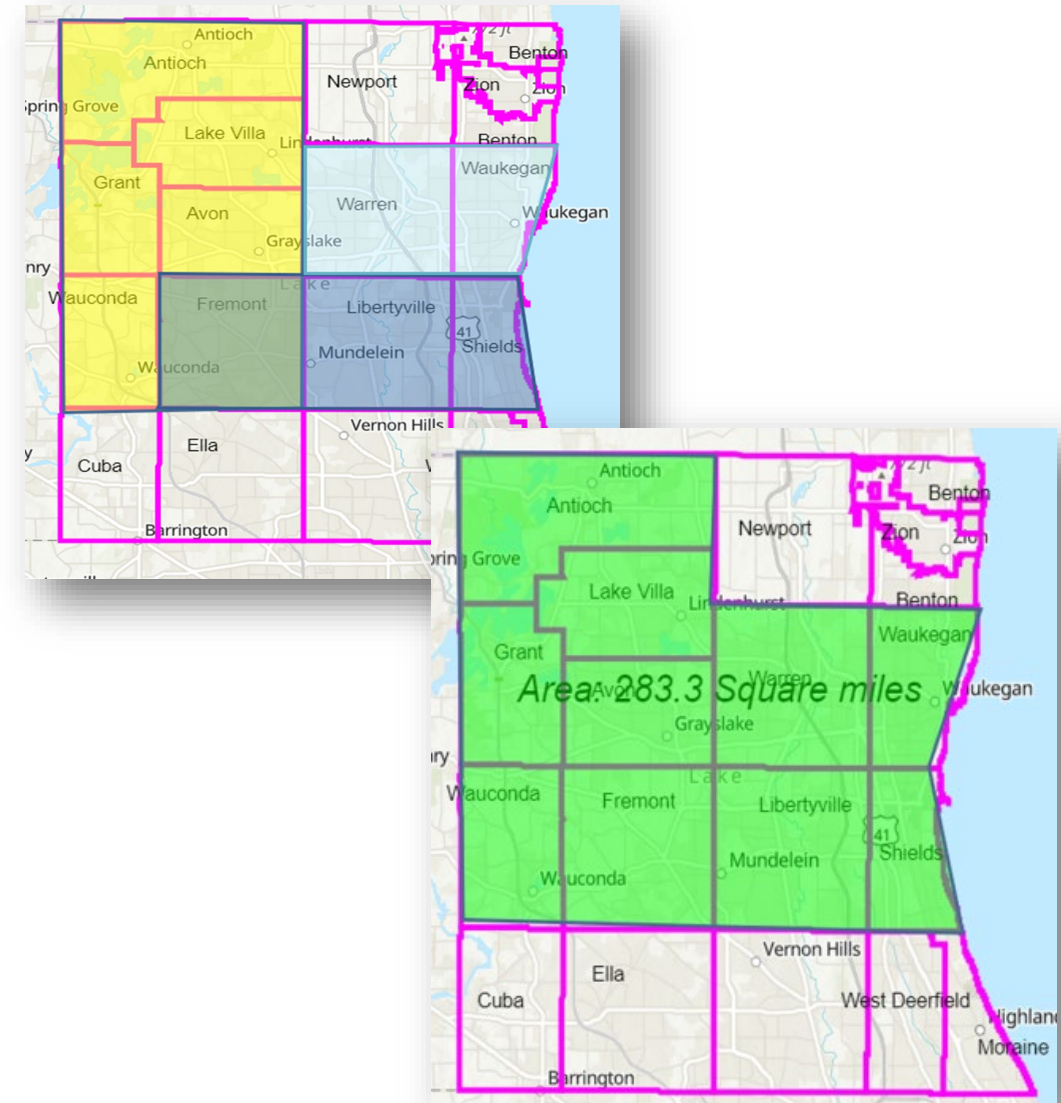
- **Envisioned a two-year transition period**

- Create Steering Committee to establish service parameters and local funding levels
- Prepare IGA's with all local partners for participation and funding (up to 70 IGA's)



Pace Discussions (Mar. 2021)

- Pace agrees to roll legacy subsidies into a coordinated service (requires local consensus)
- Pace proposed phased expansion to countywide service (requires local consensus)
- Lake County would continue to:
 - Administer local agreements (up to 70)
 - Serve as sub-recipient of federal funding
 - Act as mobility manager



The MCRide Model

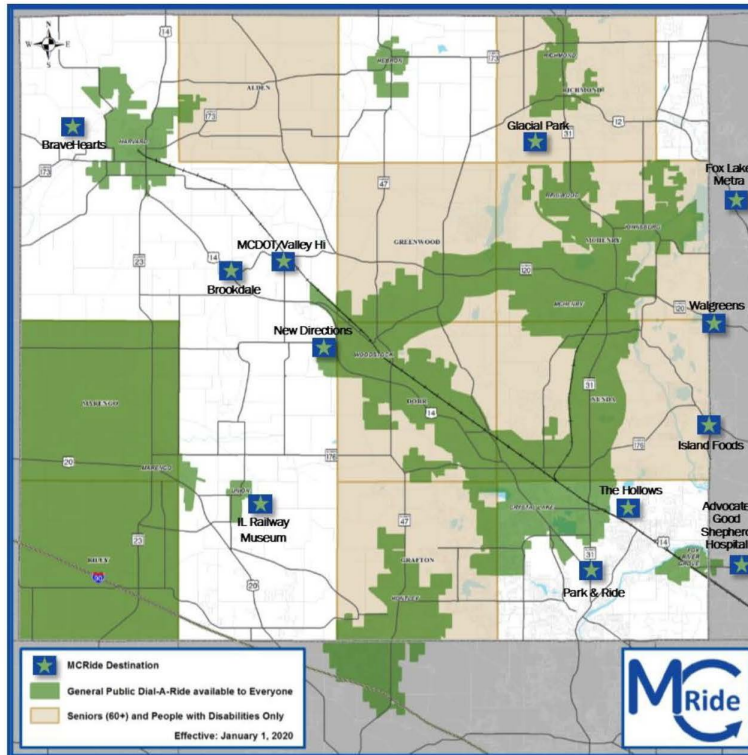
2020

MCRide Service Area*

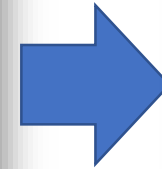
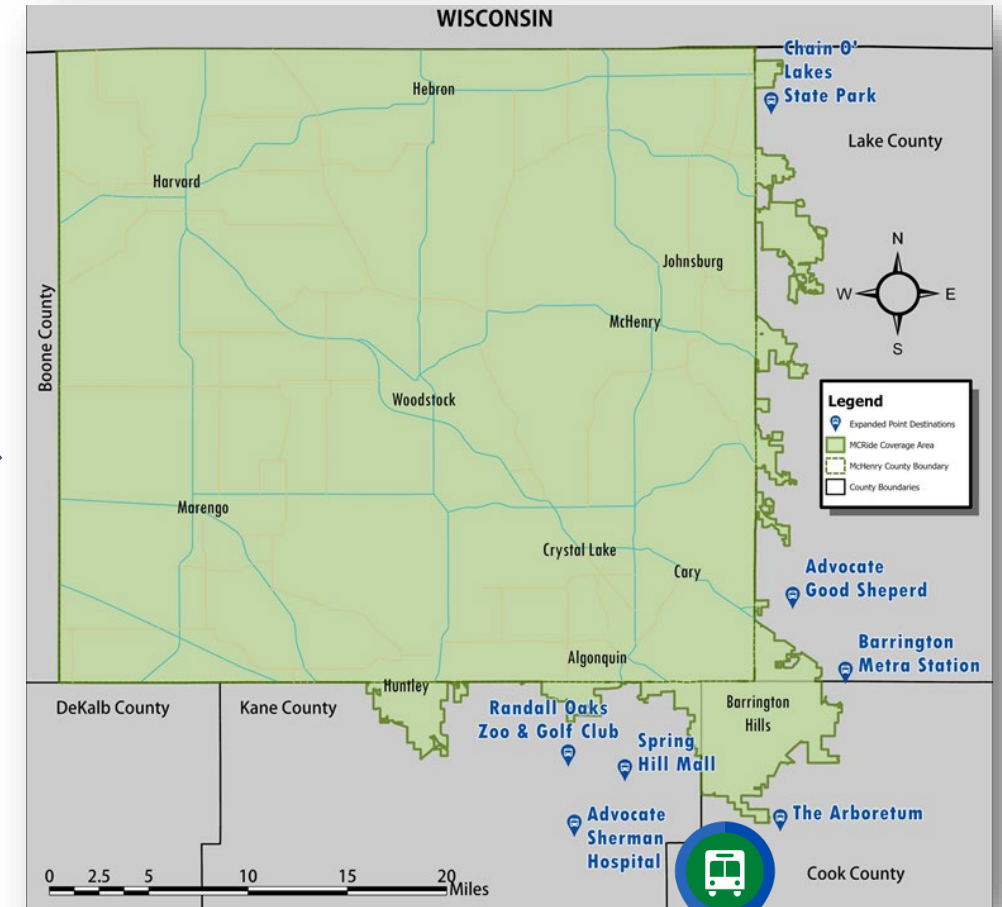
Over half of McHenry County is covered by MCRide!

- ☐ 9 Townships
- ☐ 12 Municipalities
- ☐ 13 Point Destinations

*A rider does not have to live in the service area – their trip has to begin and end somewhere in the eligible service area.

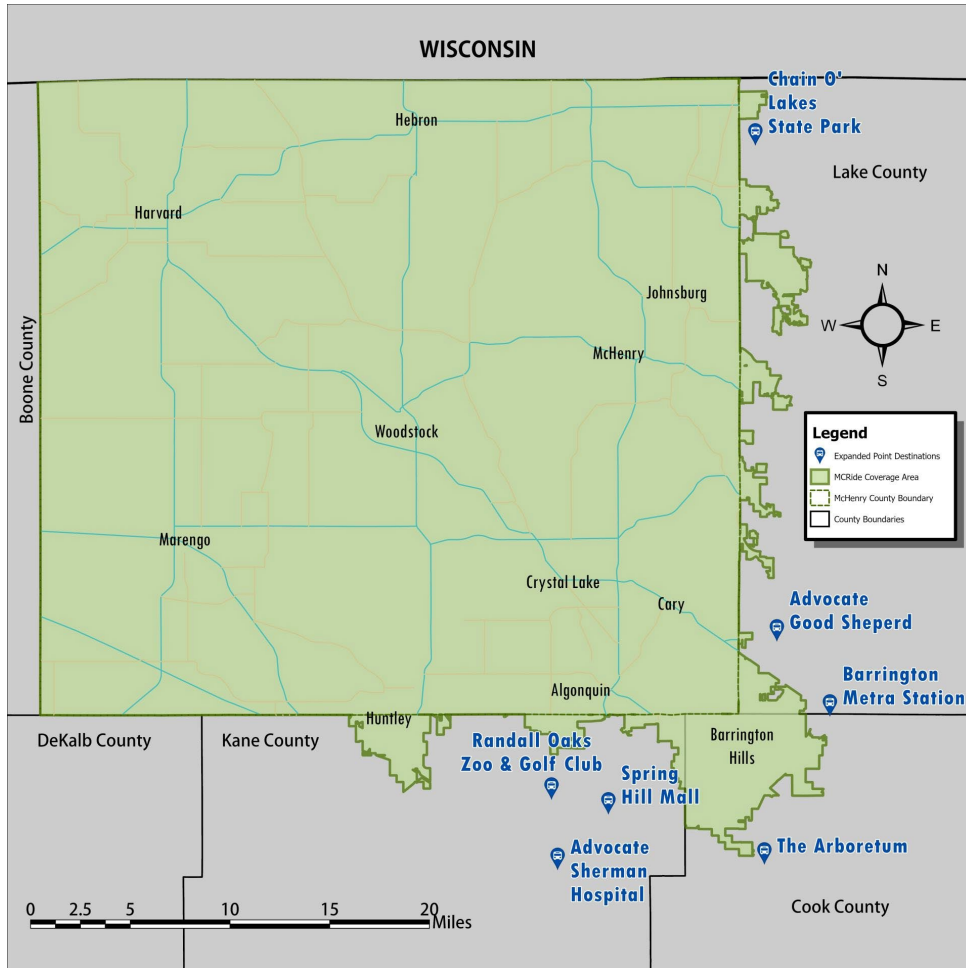


2021



April 7, 2021

A New Countywide Model



April 7, 2021

As of January 1st, 2021 MCRide is a service of McHenry County

Before 2021, McHenry County:

- Staff managed over 20 IGA's per year
- Communities funded around \$200,000 per year

Beginning in 2021, McHenry County:

- No longer has local community funding
- No longer has IGA's with local communities
- Has a single IGA with Pace to operate MCRide
- Funds MCRide through:
 - Pace legacy subsidies
 - Federal Funding
 - County Funding (RTA 1/4% Sales Tax)

Ride Lake County Options



Proceed with Local Partners

- Requires local consensus
- Manage up to 70 agreements (currently 8 IGA's)
- Local sponsors contribute funding (amount TBD)
- Service area dependent on local sponsors (potential gaps in service area)

Proceed without Local Partners

- Service parameters determined by County
- Single IGA with Pace
- No local sponsor funding
- Guarantees a borderless countywide service

Both scenarios assume:

- End goal is a borderless countywide Paratransit service
- All Pace legacy subsidies are rolled into new countywide service
- Lake County Government serves as Executive Sponsor (pending board approval)

Discussion

- Committee discussion and feedback regarding proceeding with or without local (funding) partners in pursuit of a borderless countywide model
- Should staff conduct further investigation of a service model that does not include local partners (e.g., like new MCRide service)

Next Steps

- Continue to coordinate with Pace to identify the total costs associated with a borderless countywide service
- Discuss legacy subsidy consolidation with local stakeholders (townships and municipalities)
- Complete resources analysis (staffing and funding) required to implement and sustain desired service model
- Present above information to, and seek formal direction from, the Public Works, Planning and Transportation Committee and the Lake County Board



Thank you!