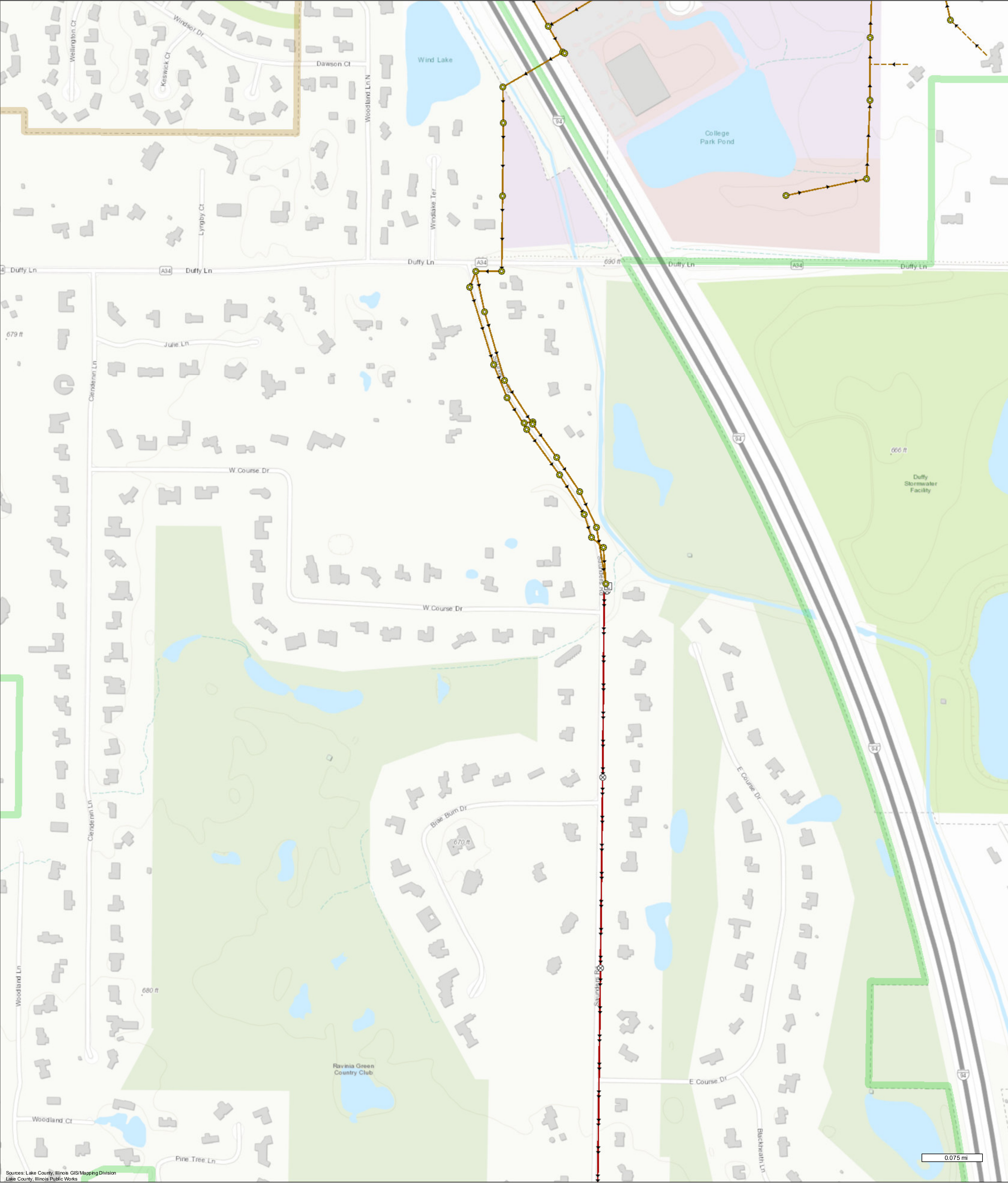



# Lake County, Illinois



Sources: Lake County, Illinois GIS/Mapping Division  
Lake County, Illinois Public Works



Map Printed on 12/17/2020

**Connection Fees**  
Areas < Street Level

- Retail Sewer and Water
- Retail Water Only
- Retail Sewer Only

**San Clean-Outs - LCPW**

- Cleanout
- Flushing Structure
- Pig Launching Station
- San Discharge Point - LCPW

**San Grease Traps - LCPW**

- San Manholes - LCPW
- San Manhole
- San Chamber
- San Meters - LCPW

**San Network Structures - LCPW**

- San Lift Station
- San Pump Station
- Wastewater Treatment Plant
- San Network Structure

**San Valves - LCPW**

- Gravity Mains - LCPW - Existing < Streets
- LCPW
- Operate and Maintain
- Private

**Force Mains - LCPW - Existing < Streets**

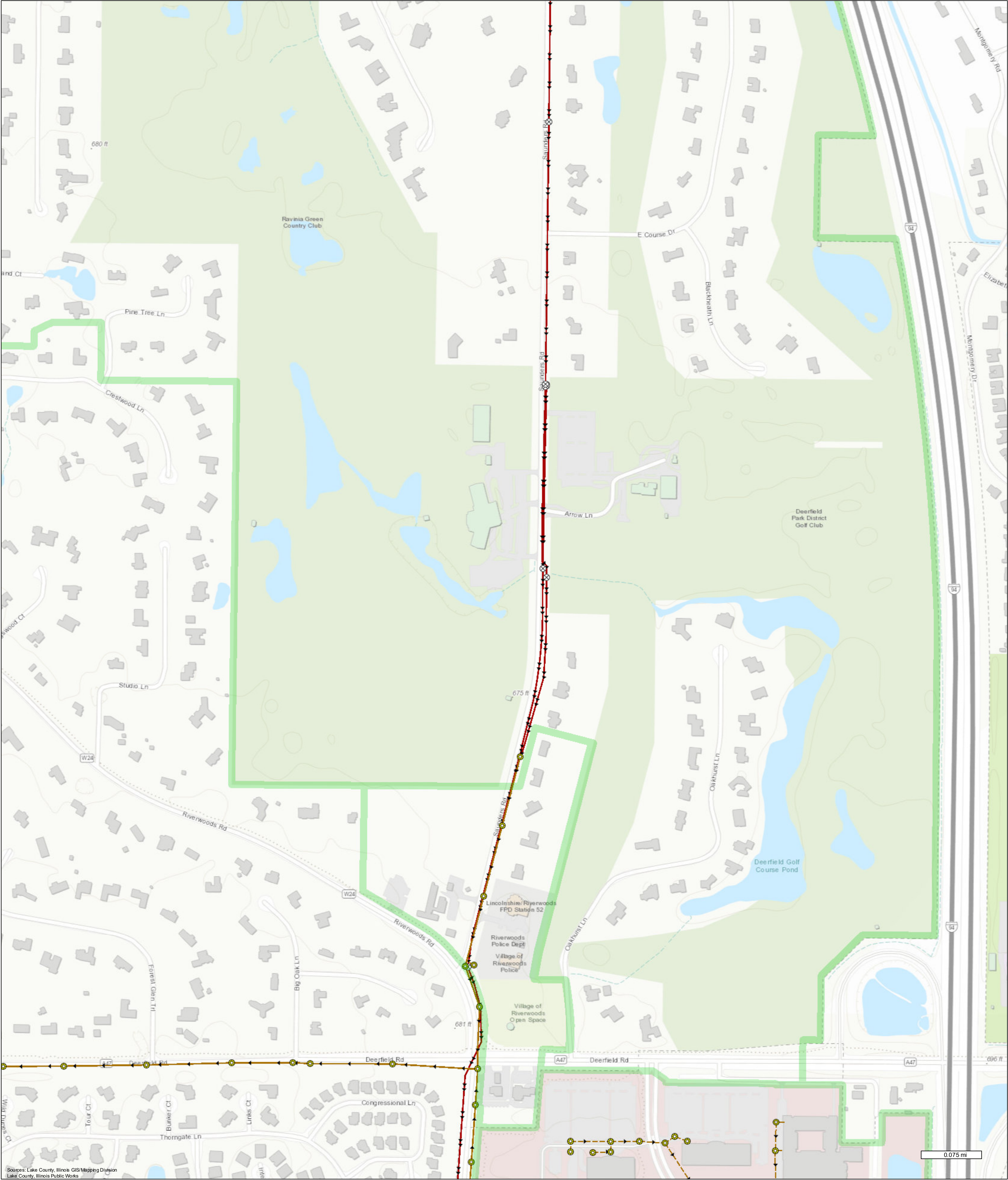
- LCPW
- Operate and Maintain
- Private


**Disclaimer:**

The selected feature may not occur anywhere in the current map extent. A Registered Land Surveyor should be consulted to determine the precise location of property boundaries on the ground. This map does not constitute a regulatory delineation and is not a base for engineering design. This map is intended to be viewed and printed in color.



# Lake County, Illinois





Map Printed on 12/17/2020

<b>Connection Fees</b> Areas < Street Level Retail Sewer and Water Retail Water Only Retail Sewer Only	<b>Wholesale Sewer and Retail Water</b> Wholesale Sewer Only No LCPW Service	<b>San Clean-Outs - LCPW</b> Cleanout Flushing Structure Pig Launching Station San Discharge Point - LCPW	<b>San Grease Traps - LCPW</b> <b>San Manholes - LCPW</b> San Manhole San Chamber San Meters - LCPW	<b>San Network Structures - LCPW</b> San Lift Station San Pump Station Wastewater Treatment Plant San Network Structure	<b>San Valves - LCPW</b> <b>Gravity Mains - LCPW - Existing &lt; Streets</b> LCPW Operate and Maintain Private	<b>Force Mains - LCPW - Existing &lt; Streets</b> LCPW Operate and Maintain Private
--	--	---	---	---	--	--

**Disclaimer:** The selected feature may not occur anywhere in the current map extent. A Registered Land Surveyor should be consulted to determine the precise location of property boundaries on the ground. This map does not constitute a regulatory determination and is not a base for engineering design. This map is intended to be viewed and printed in color.