

Lake County Wetland Restoration and Preservation Plan (“WRAPP”)



STORMWATER MANAGEMENT COMMISSION

PWPT Committee Meeting

November 4, 2020



Why a WRAPP?

- ❖ Lake County has lost over half of the wetlands that existed prior to European settlement
- ❖ Lake County WDO Policy: *No Net Loss* of Wetland acreage + *Net Gain* in Wetland Functions
- ❖ Action Item in 2002 Lake County Comprehensive Stormwater Management Plan
- ❖ Good baseline of wetland mapping but limited identification of functions or restoration opportunities



STORMWATER MANAGEMENT COMMISSION

WRAPP Goal

*To provide a **wide audience of end-users** with decision-making support to help prioritize wetland restoration and preservation efforts.*



STORMWATER MANAGEMENT COMMISSION

What the WRAPP does NOT do:

- ❖ Impose new development regulations
- ❖ Establish new protections for wetlands
- ❖ Recommend land acquisition or zoning changes
- ❖ Replace the need for a site-specific wetland delineation



STORMWATER MANAGEMENT COMMISSION

Wetland Functions

13 Functions Selected with TAG Input

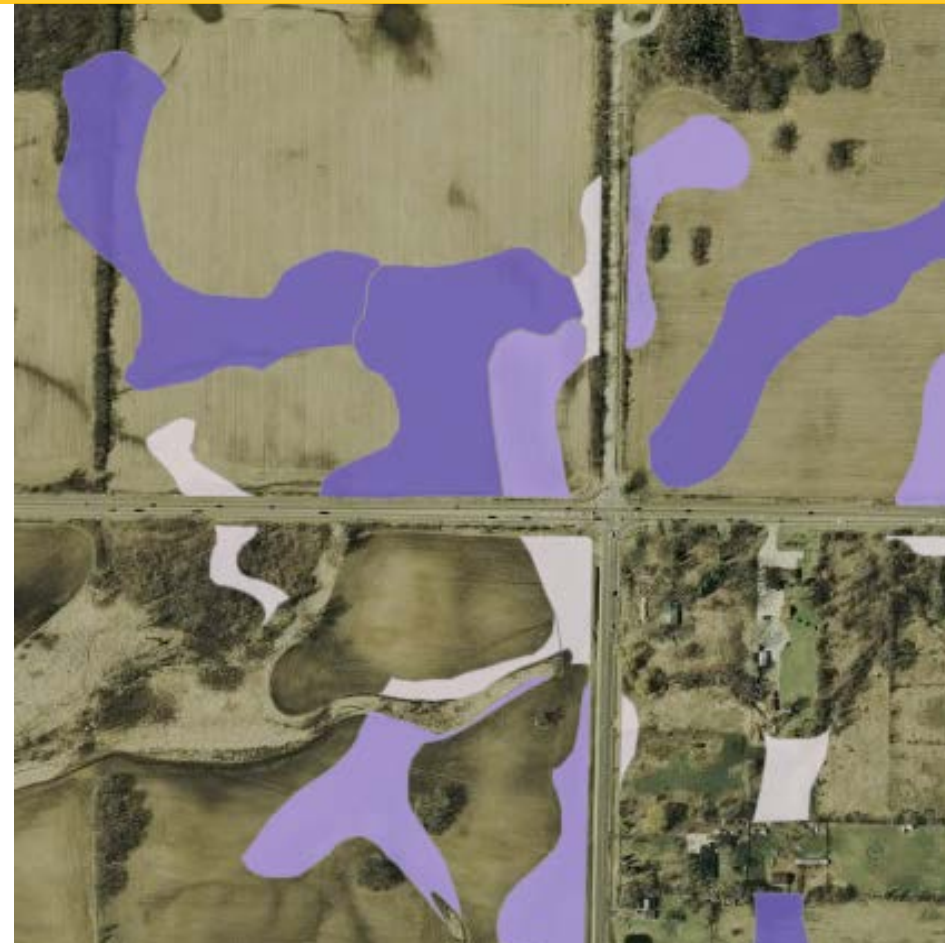
Hydrologic Functions	Biodiversity Functions	Water Quality Functions
Flood Water Storage	Native Fish Habitat	Nutrient Transformation (P-focus)
Stream Baseflow Maintenance	Waterfowl Habitat	Sediment & Other Particulate Retention
	Other Wetland-dependent Bird Habitat	Shoreline/Stream Bank Stabilization
	Woodland Amphibian Habitat	Carbon Sequestration
	Unique Wetland Resources	
	Stream Shading	
	Wildlife Movement Corridors	



Restoration Site ID & Prioritization

Potentially Restorable Wetlands (PRWs)

PRW = Historic Wetlands & Water Bodies – Current Wetlands & Water Bodies – Recently Restored Areas



Potentially Restorable Wetlands

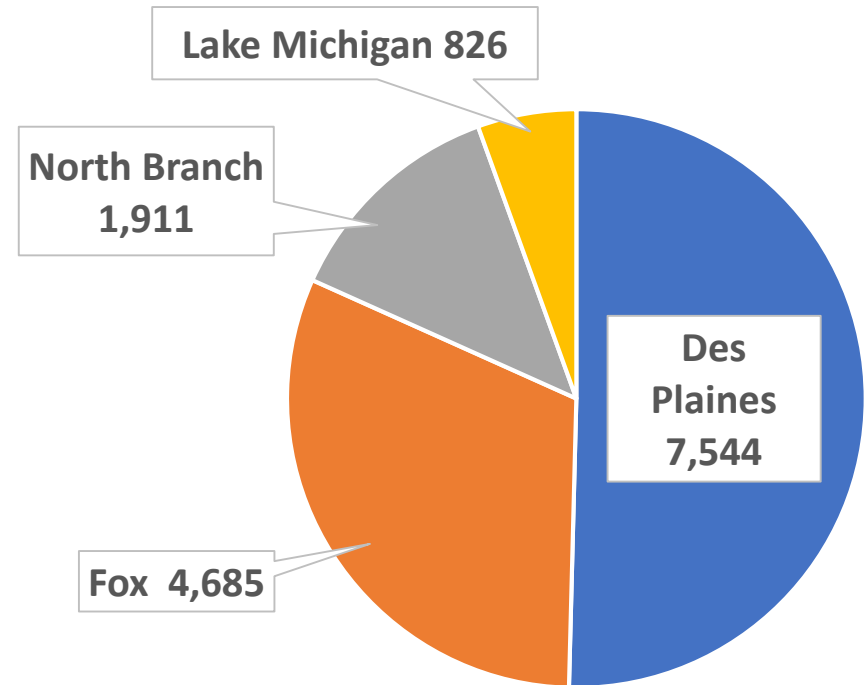
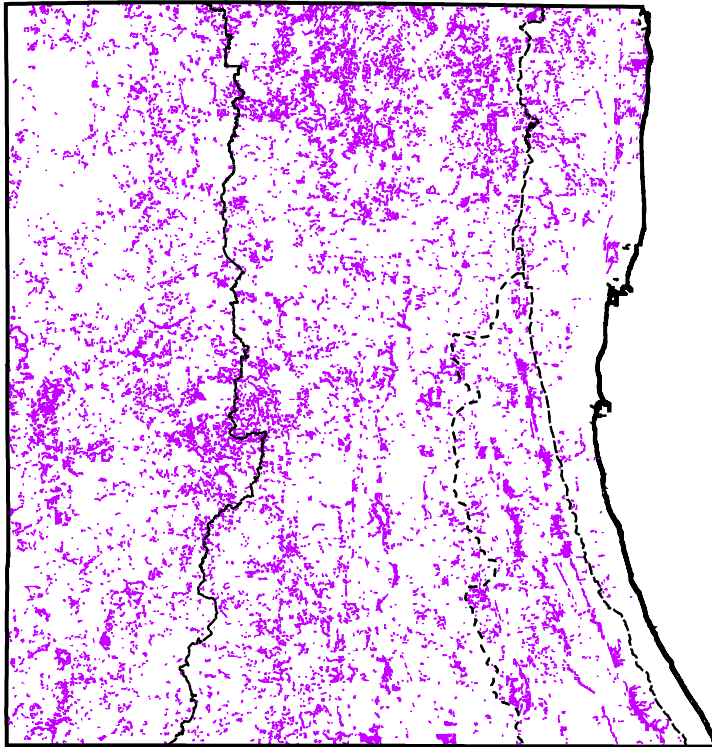


Flood Water Storage Functional Ratings



STORMWATER MANAGEMENT COMMISSION

Potentially Restorable Wetlands (PRWs)



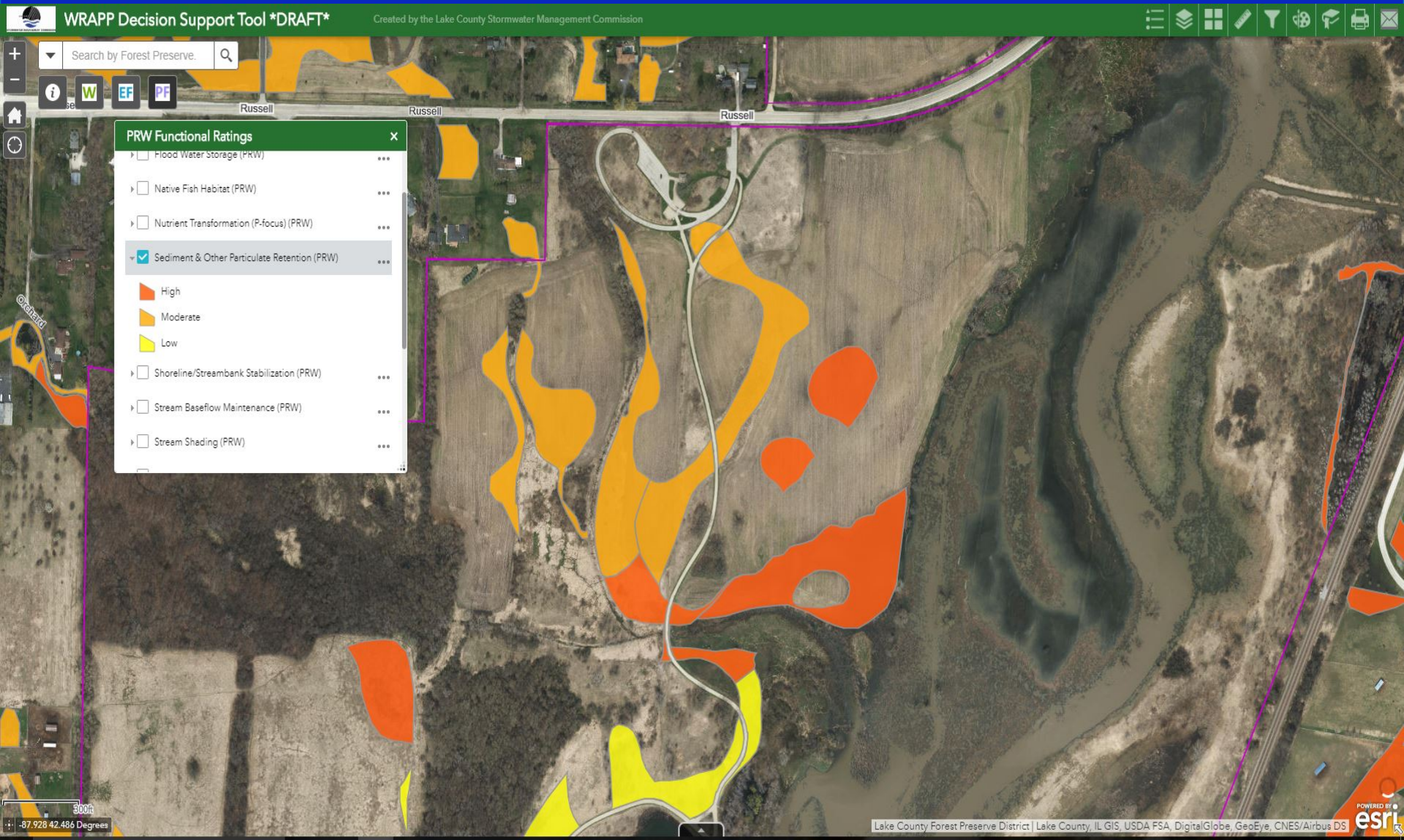
14,966 acres County-wide
~18% of Pre-settlement wetland acres



STORMWATER MANAGEMENT COMMISSION

Using the WRAPP-DST

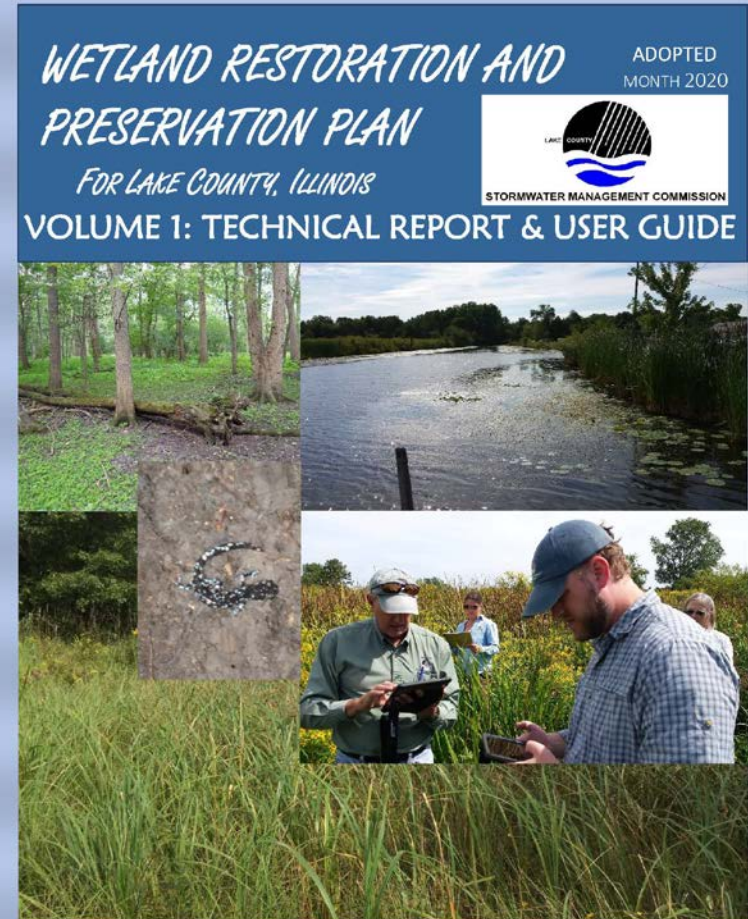
Example – LCFP Hydrologic Restoration





Recommended Action Strategies

- Assist partners seeking funding for wetland projects (SMC)
- Work with mitigation bankers to create new banks, particularly in the North Branch and Lake Michigan watersheds (SMC)
- Periodically update WRAPP products & maintain a database of wetland restoration projects (SMC)
- Pursue projects on floodplains & along streams, particularly in North Branch & Des Plaines watersheds
- Pursue projects with “High” flood water storage function (widespread)
- Pursue projects in Lake Michigan watershed (limited)
- Preserve & restore in/around the Chiwaukee-Illinois beach plain





STORMWATER MANAGEMENT COMMISSION

Thank You!

QUESTIONS?

❖ WRAPP Web Site:

❖ <https://www.lakecountyiil.gov/2531/Wetland-Restoration-Preservation-Plan>

❖ Decision Support Tool (Mapping Application):

❖ <https://lakecountyiil.maps.arcgis.com/apps/webappviewer/index.html?id=be7438dc569f492dacfc957ab5f86bc0>