



Justice, Equity, and Mental Health

Jim Hawkins

Deputy County Administrator

January 7, 2020

Purpose



- **Provide short overview of related justice, equity, and mental health initiatives**
- **Receive updated guidance on initiatives for staff action (Crisis / Wellness Drop-Off Center)**
- **Provide the most recent Crisis / Wellness Drop-Off Center study to committee for review**

2019 Strategic Guidance



Goal 1:

- **Provide public safety and advance an integrated, data driven justice system**
- **Further develop a “deflection and diversion” crisis response model that includes triage / stabilization, housing, mobile response, training for law enforcement and first responders, and a crisis intervention system, to address mental health issues**

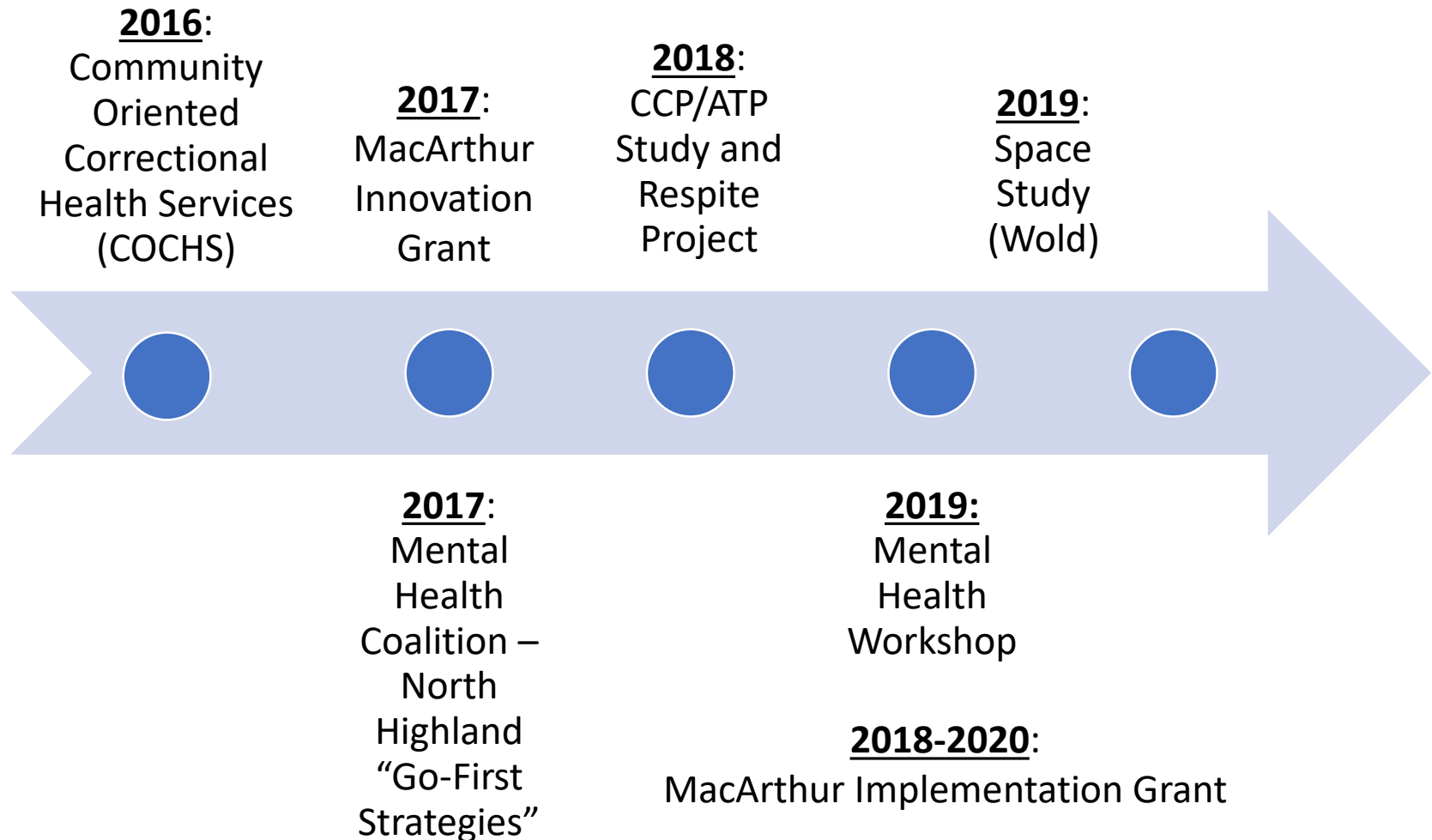
2019 Strategic Guidance



Strategic Themes:

- **Inter-Organization Cooperation**
- **Quality of Life**
- **Mental Health**
- **Grants and Specialty Funding**
- **Diversity and Inclusion**

Overview: Justice, Equity, and Mental Health



COCHS (2016)

Community Oriented Correctional Health Services



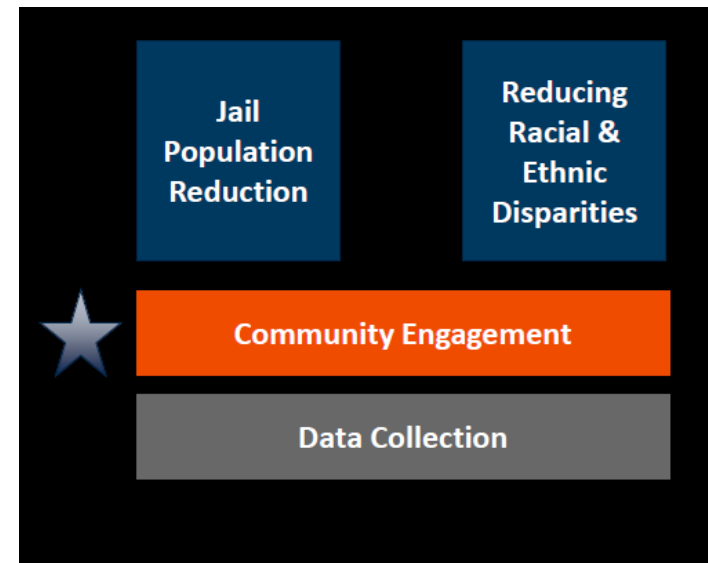
- **Funded by the Healthcare Foundation of Northern Lake County**
- **Led by Lake County Health Department**
- **Goals:**
 - **Increase numbers of persons with serious mental illness diverted from the jail**
 - **Reduce their recidivism**
 - **Improve mental health service access and continuity of care**
- **Recommended a central drop off center and education to gain buy-in**
- **Insuffient data to recommend size of a crisis center**



Jail High Utilizer Program (2017)



- **Funded by MacArthur Foundation Safety and Justice Challenge**
- **Focus areas:**
 - Justice and equity
 - Jail deflection and diversion strategies
- **2017 innovation (seed) funding**
 - Intensive culturally sensitive case management and warm hand off to persons released from jail
- **2018 implementation funding**
 - Jail population, race / ethnicity disparity reduction, community engagement, and data collection

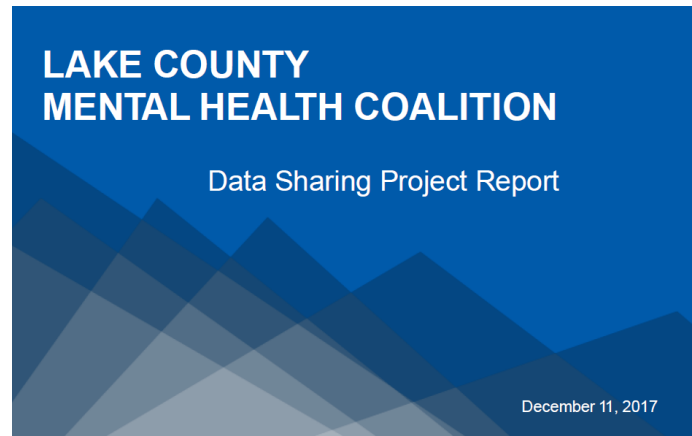


Data Sharing Project (2017)

Lake County Mental Health Coalition



- **Led by County Board Chair and Susan Garrett (State Senator (Ret.))**
- **Assessment of Lake County's behavioral health data sharing**
- **Identification of gaps and barriers**
- **Future vision for data sharing**
- **Recommendations for eight "Go-First Strategies"**



2018 Go-First Strategies



- 1. Implement a pilot data sharing project**
 - LCHD Data Sharing Pilot
- 2. Develop data governance structure**
- 3. Change management**
- 4. Engage Medicaid managed care organizations**
- 5. Identify knowledge opportunities for behavioral health providers**
- 6. Support expanding the behavioral health services continuum**
- 7. Influence federal and state laws**
 - Mental Health Power of Attorney
- 8. Explore funding opportunities**
 - SAMHSA and MacArthur Foundation

Respite Project

Lake County Health Department



- **Phase 1 (2018):**
 - Screening interviews with 21 police chiefs (7 in-person interviews & 14 email responses)
 - Education on the program
- **Phase 2 (2018-2019):**
 - Outreach campaign
 - Police Chief's luncheon (25 attended)
 - 41 Police Departments contacted
 - Lake Forest PD training of 11 officers
 - Print materials
 - Access log

Crisis / Wellness Center Workshop (2019)



- **More than 70 justice and health stakeholders participated**
- **Identified behavioral health resources and gaps**
- **Consensus that a central crisis diversion center to serve as a triage hub in the crisis care system is needed**
- **Consensus on a 23-hour stabilization and observation service**
- **Published report in June 2019**

Lake County Crisis Care Model Workshop: Report

Prepared by: Policy Research Associates/Policy Research, Inc.

Travis Parker, MS, LIMHP, CPC

Brian Case, MA

June 17, 2019

Delmar, NY



<https://www.youtube.com/watch?v=BR5HDw67OwQ&feature=youtu.be>

Crisis / Wellness Drop-Off Center Phase 1 Plan (2019)



- **2019 new program request**
- **Goal to identify operational and programmatic needs to support deflection of individuals from jails and emergency departments**
- **Five scenarios developed as potential approaches for creating a County-provided Crisis Triage & Stabilization Center**
 - **Construction / renovation costs: \$4.5 – \$21.5 million**
 - **Additional staffing required**
- **“3rd party” options not included**

Proposed Way Ahead

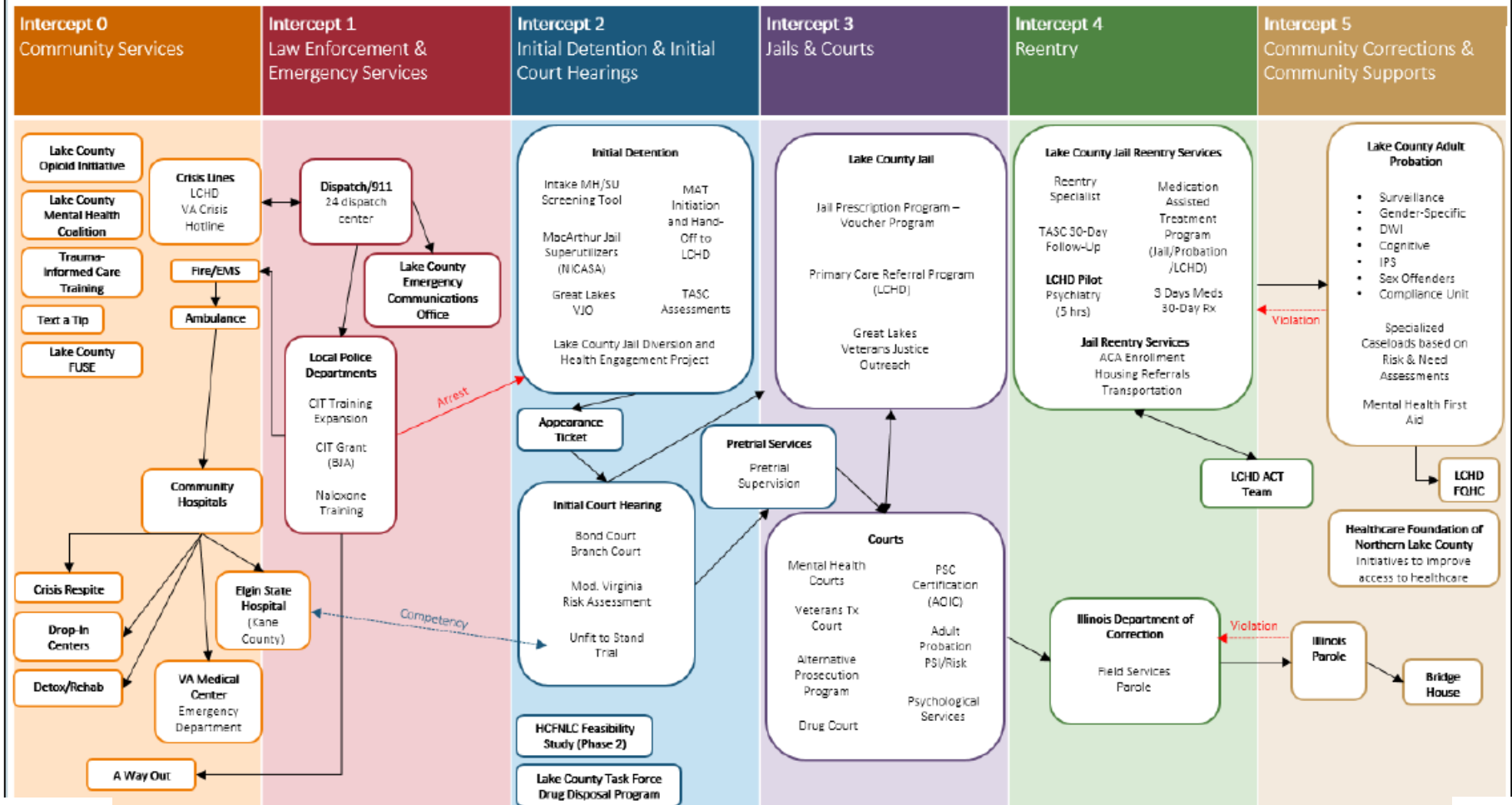


- 1. Update current list of initiatives addressing justice, equity, and mental health (“intercept map”)**
 - Team Members: LCSO, LCHD, Public Defender, State’s Attorney, Courts, Community Partners, County Admin (coordinate)**

Intercept Map



SEQUENTIAL INTERCEPT MODEL MAP FOR LAKE COUNTY, IL





Proposed Way Ahead

- 1. Update current list of initiatives addressing justice, equity, and mental health (“intercept map”)**
 - Team Members: LCSO, LCHD, Public Defender, State’s Attorney, Courts, Community Partners, County Admin (Coordinate)
- 2. Work with existing partners to establish a crisis / wellness center pilot program(s) to meet some of the community’s defined needs and to gather data**
 - Team Members: LCSO, LCHD, State’s Attorney, Community Partners, County Admin (Coordinate)
- 3. Review existing studies and work with partners to determine the recommended option for a permanent crisis / wellness center. Formalize the plan and establish funding.**
 - Team Members: LCSO, LCHD, State’s Attorney, Community Partners, Facilities & Construction, Finance, County Admin (Coordinate)

Purpose



-
- **Provide short overview of related justice, equity, and mental health initiatives**
 - **Receive updated guidance on initiatives for staff action (Crisis / Wellness Drop-Off Center)**
 - **Provide the most recent Crisis / Wellness Drop-Off Center study to committee for review**

Questions?