



LAKE COUNTY  
Investing in People  
and Our Communities

# Cannabis Regulation Unincorporated Lake County

---

November 8, 2019

# Quick Facts

---

- Possession Limits
  - Illinois Residents
    - 30 grams of cannabis flower
    - 5 grams of cannabis concentrate
    - No more than 500 milligrams of THC contained in a cannabis-infused product
    - Medical cannabis patients can possess more than 30 grams if home-grown under certain conditions
  - Non-residents (out of state)
    - 15 grams of cannabis flower
    - 2.5 grams of cannabis concentrate
    - No more than 250 milligrams of THC contained in a cannabis-infused product

# Quick Facts, cont'd.

---

## Six License Types/Uses:



DISPENSARY



INFUSER



TRANSPORTER



CRAFT  
GROWER



PROCESSING  
CENTER



CULTIVATION  
CENTER

# Allowed Regulatory Actions

---

Local governments may:

- Enact reasonable zoning regulations related to the zoning of cannabis business establishments
  - Time, place, manner, and number of cannabis business establishment operations
  - The minimum distance limitations between cannabis business establishments and locations it deems sensitive
  - May use conditional or special use permits, however conditions must be reasonable
- Prohibit or significantly limit a cannabis business establishment's location

(No regulations may be more restrictive than state regulations)



# Options: Ban vs. Allow

---

Option 1: Permanent Ban (all uses explicitly prohibited)

Option 2: Ordinance to Allow

Option 3: Moratorium (for limited time)

# Ordinance to Allow

- Zoning Ordinance sets standards and limitations for siting and operation of facilities within local government jurisdictions

Principal Use	Residential	General Commercial	Limited Industrial	Intensive Industrial
Recreational Cannabis Dispensary	N	CUP	CUP	CUP
Recreational Cannabis Cultivation Center	N	N	CUP	CUP
Recreational Cannabis Processing Center	N	CUP	CUP	CUP
Recreational Cannabis Craft Grower	N	CUP	CUP	CUP
Recreational Cannabis Infuser	N	CUP	CUP	CUP
Recreational Cannabis Transporter	N	N	CUP	CUP

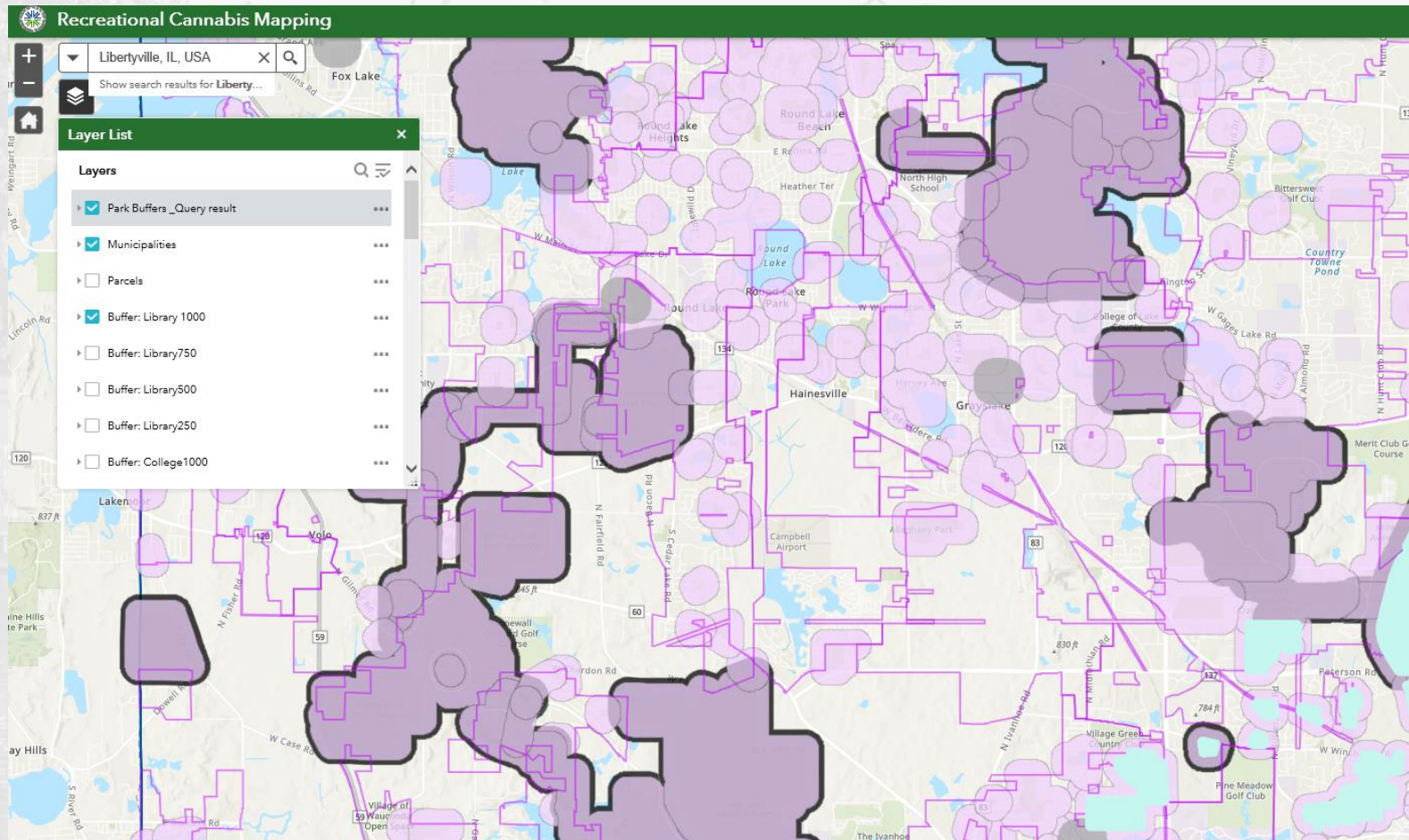
N=Not Permitted      P=Permitted      CUP=Conditional Use Permit  
(General Development Standards Apply)

# Task Force

---

- Series of 3 meetings with representatives from over 30 local municipalities and organizations participating
- Work Products:
  - Retailer's Occupation Model Tax Ordinance
  - Recreational Cannabis Model Zoning Ordinance
  - Recreational Cannabis Model Ordinance to Ban
  - GIS application-Sensitive Use Buffering Tool
  - Lake County regulatory status map

# Sensitive Use Buffering Tool





# Additional Discussion

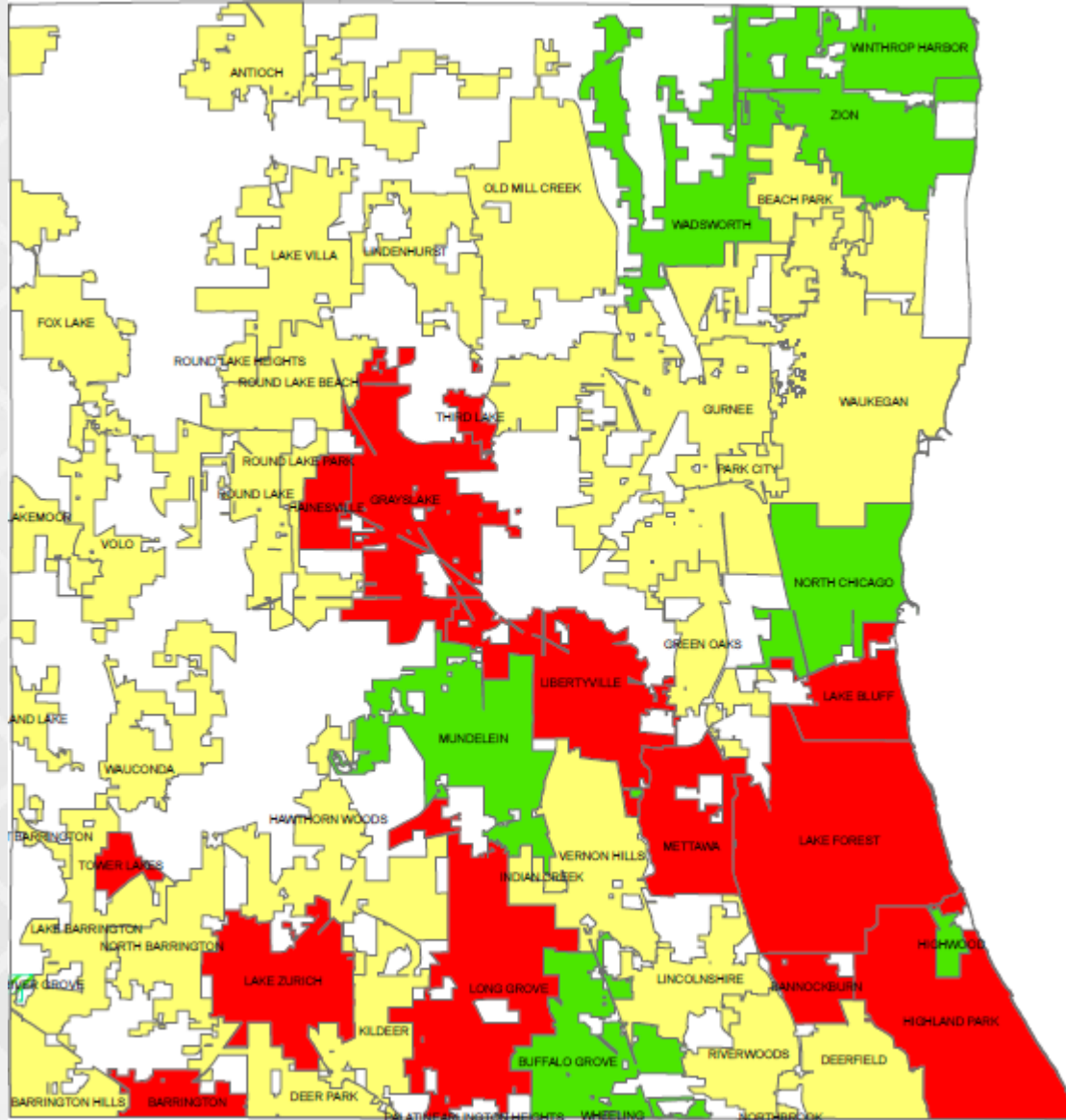
---

## Highlights of Impacts





- Law Enforcement
- Youth Impacts

# Status of Municipal Regulation

(as of November 1, 2019)



## DECISION

-  Approved However Regulation Not In Place  
 Banned  
 Undecided/No Action Taken  
 Allowed



QUESTIONS?

---