

ORDINANCE NUMBER _____

AN ORDINANCE PROHIBITING THE USE OF GROUNDWATER AS A POTABLE WATER SUPPLY BY THE INSTALLATION OR USE OF POTABLE WATER SUPPLY WELLS OR BY ANY OTHER METHOD.

WHEREAS, certain properties in the County of Lake, Illinois have been used over a period of time for commercial/industrial purposes; and

WHEREAS, because of said use, concentrations of certain chemical constituents in the groundwater beneath the County may exceed Class I groundwater quality standards for the potable resource groundwater as set forth in 35 Illinois Administrative Code 620 or Tier 1 remediation objective as set forth in 35 Illinois Administrative Code 742; and

WHEREAS, the County of Lake desires to limit potential threats to human health from groundwater contamination while facilitating the redevelopment and productive use of properties that are the source of said chemical constituents;

NOW, THEREFORE, BE IT ORDAINED, by this County Board of Lake County, Illinois, that:

SECTION 1: Use of groundwater as a potable water supply prohibited.

The use or attempt to use as a potable water supply groundwater from within the area depicted in Exhibit A, attached hereto and made a part hereof, by the installation or drilling of water wells or by any other method is hereby prohibited. This prohibition expressly includes the County of Lake.

SECTION 2: Penalties.

Any person violating the provisions of this ordinance shall be subject to a fine of up to \$1,000 for each violation.

SECTION 3: Definitions.

“Person” is any individual, partnership, co-partnership, firm, company, limited liability company, corporation, association, joint stock company, trust, estate, political subdivision, or any other legal entity, or their legal representatives, agents or assigns.

“Potable water” is any water used for human or domestic consumption, including, but not limited to, water used for drinking, bathing, swimming, washing dishes, or preparing foods.

SECTION 4: Repealer.

All ordinances or parts of ordinances in conflict with this ordinance are hereby repealed insofar as they are in conflict with this ordinance.

SECTION 5: Severability.

If any provision of this ordinance or its application to any person or under any circumstances is adjudged invalid, such adjudication shall not affect the validity of the ordinance as a whole or of any portion not adjudged invalid.

SECTION 6: Effective date.

This ordinance shall be in full force and effect from and after its passage, approval and publication as required by law.

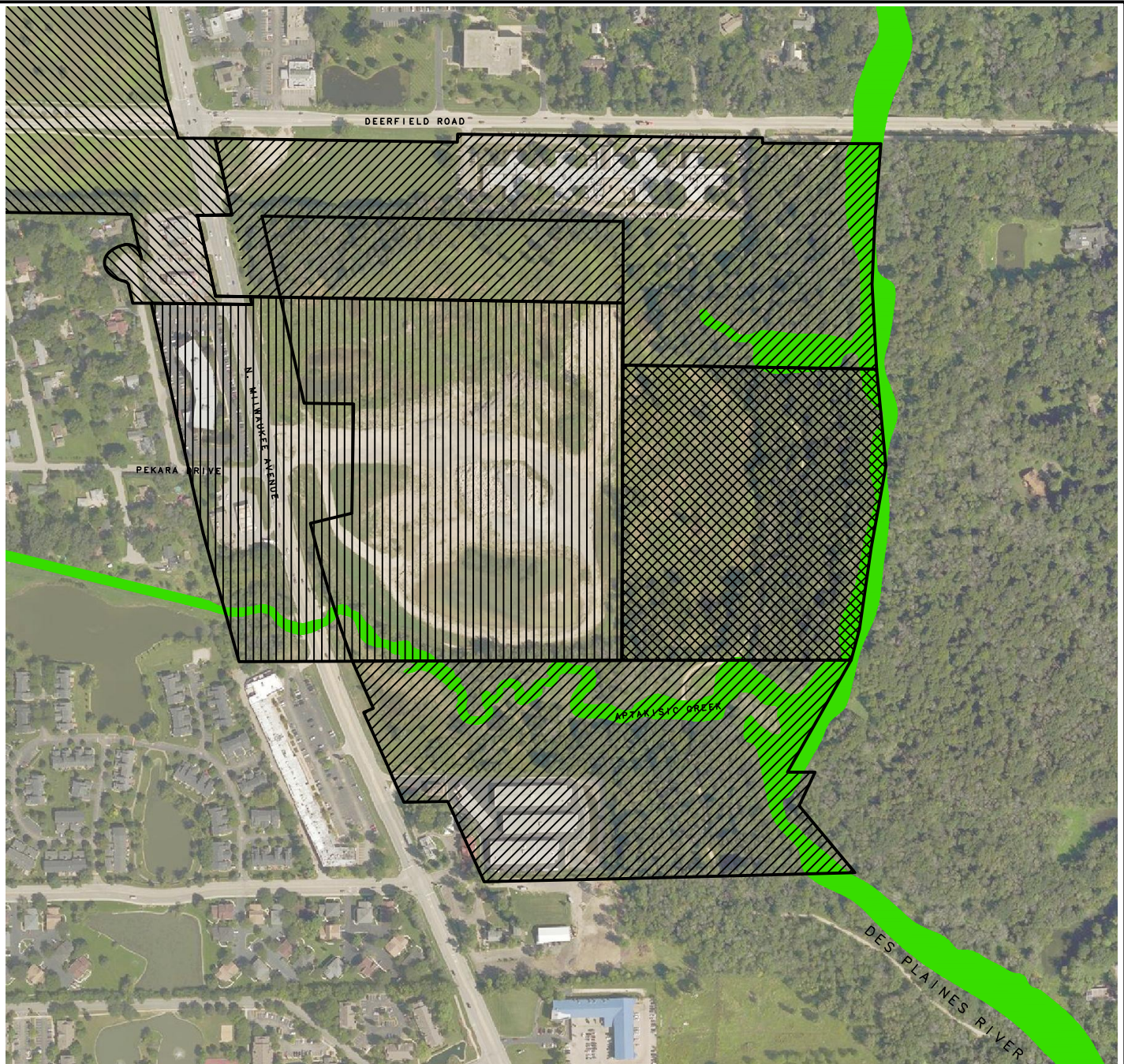
ADOPTED: _____
(DATE)

APPROVED: _____
(DATE)








(County Clerk)

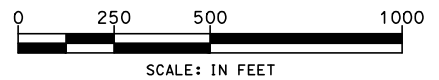
(County Board Chairman)

Officially published this _____ day of _____, 20____.



LEGEND

-  SITE LOCATION
-  APPROXIMATE PARCEL BOUNDARY
-  DES PLAINES RIVER
-  VILLAGE OF RIVERWOODS GROUNDWATER ORDINATE
-  LAKE COUNTY FOREST PRESERVE DISTRICT ELUC
-  BUFFALO GROVE GROUNDWATER ORDINATE
-  LAKE COUNTY GROUNDWATER ORDINATE



NOTE

PARCEL DATA DERIVED FROM LAKE COUNTY GEOSPATIAL DATA WEBSITE.



**ANDREWS
ENGINEERING**

3300 GINGER CREEK DRIVE
 SPRINGFIELD, ILLINOIS 62711-7233
 PH (217) 787-2334 WWW.ANDREWS-ENG.COM

PONTIAC, IL • LOMBARD, IL • INDIANAPOLIS, IN • WARRENTON, MD

APPROVED BY: SLG DESIGNED BY: SLG DRAWN BY: MPN

LAKE COUNTY FOREST PRESERVE
 DISTRICT ELUC AREA

PREPARED FOR
 FORMER HOFFELDER LANDFILL
 RIVERWOODS, LAKE COUNTY, ILLINOIS

DATE: APRIL 2019

PROJECT ID:
 160022/0009

SHEET NUMBER:

**EXHIBIT C
ELUC**