



LakeCounty

Workforce Development Board

Workforce Development Department

Workforce Development Participants & Programs



TRAINING • CONNECTING • DEVELOPING ILLINOIS' WORKFORCE

A proud partner of the **americanjobcenter**® network

Workforce Development System

Workforce Development Board

- Promote and advocate for services and resources to all areas of Lake County
- Ensure all Lake County residents have access to information on key industry sectors, careers, high growth jobs, education and training, and local openings.
- Oversees funds and plans based on local data and regional industry

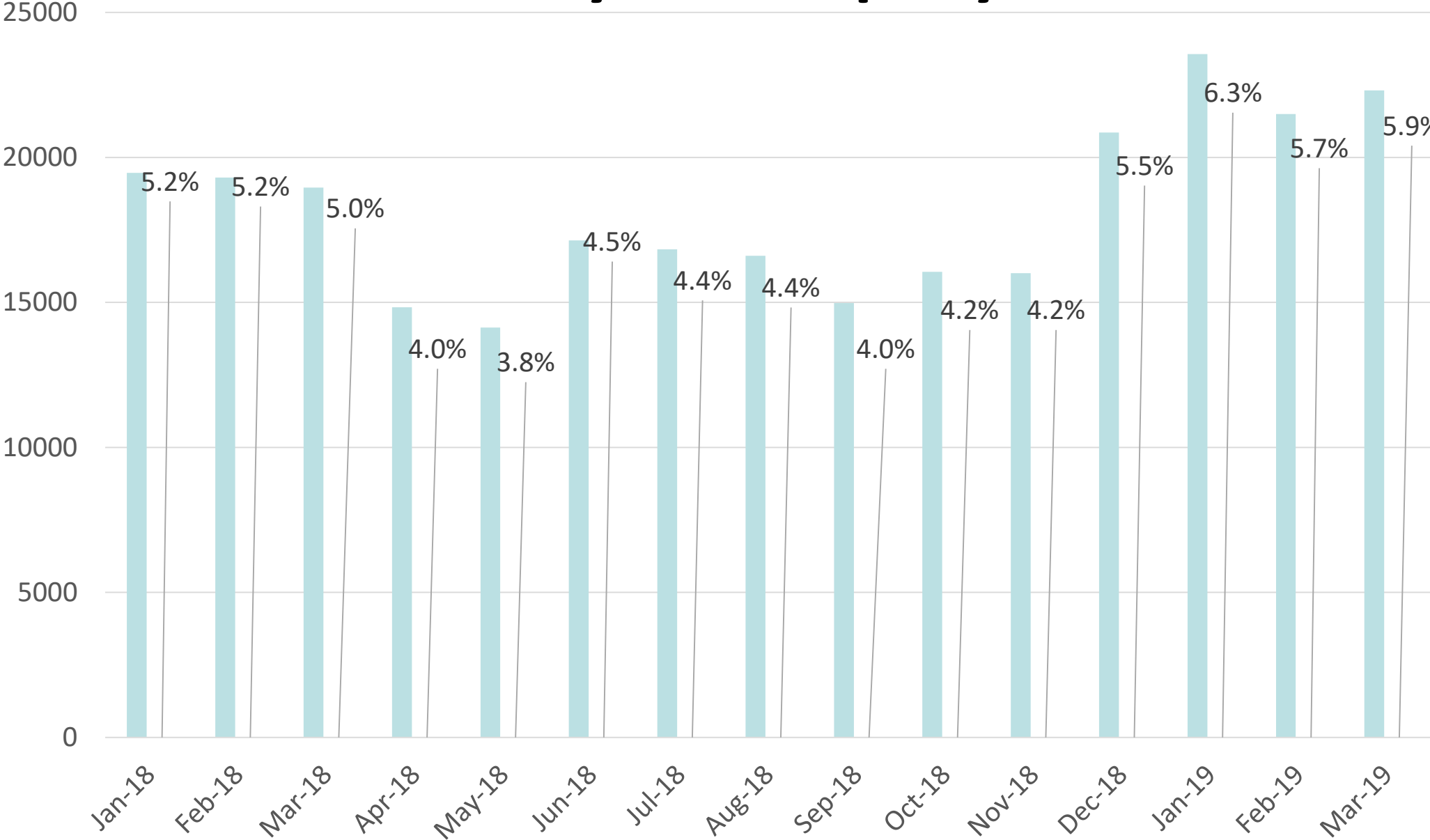
Workforce Development

- Carries out the strategies to Unemployed & Under-employed
- Develops programs to serve targeted, most diverse populations
- Delivers services throughout Lake County

Job Center of Lake County

- Collaborates with partners serving diverse job seekers
- Shared services and reduction in duplication of services
- Expands services to entities and providers throughout Lake County

Lake County Unemployment 2018-2019



Lake County
Mar 2018: 5.0%
Mar 2019: 5.9%

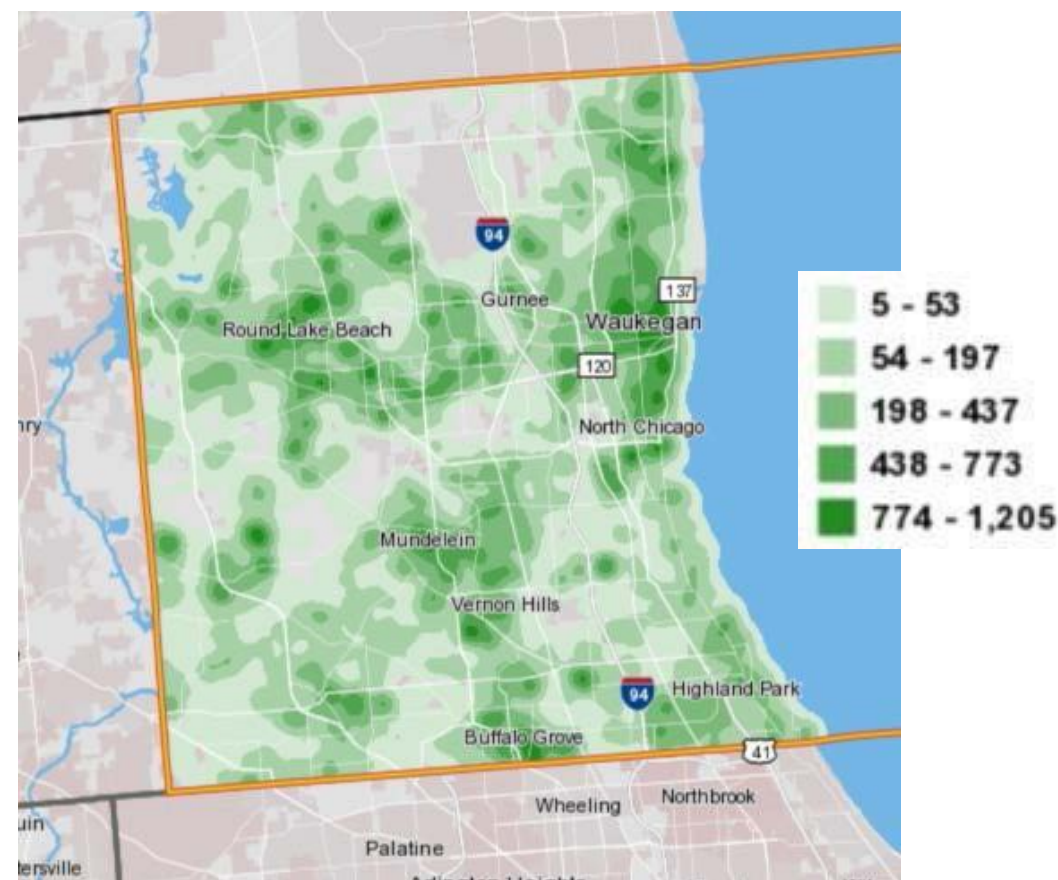
Illinois
Mar 2019: 4.5%

US
Mar 2019: 3.9%

Unemployment & Lowest-Earning Workers

City/Village		Unemployed	Employed
Round Lake	11.3%	1,792	14,058
Waukegan	9.1%	4,245	42,345
N. Chicago	8.5%	790	8,549
Zion	8.3%	946	10,498
Mundelein	5.9%	1,109	17,564
Gurnee	4.3%	753	16,657
Vernon Hills	4.0%	603	14,627
Highland Park	3.7%	573	14,805
Buffalo Grove	3.1%	758	23,729

Unemployment rate March 2019 - major municipalities.
Lake County – 5.9%: IL – 4.5%



Residency map of where lowest-earning workers live. Those earning \$15,000 per year.

Unemployed Characteristics – Lake County

Demographic information of individuals that were unemployed during 2018

Gender

- Male 65%
- Female 34%

Race/Ethnicity

- White/Not Hispanic 43%
- Black/Not Hispanic 11%
- Hispanic 37.5%

Age

- 16 – 24 4%
- 25 – 44 37.5%
- 45-64 52%

Education Level

- 12th grade or less 53%
- Some College 21%
- 4 Year Degree 16%
- Graduate Degree 9.5%

Workforce Development – Targeted Population

Services and programs aligned with residents in high poverty and higher unemployment areas

756 Workforce Participants

Municipality	# of Participants
Waukegan	219
Zion	81
Round Lake	65
N.Chicago	34
Gurnee	33
Beach Park	29
Mundelein	27

215 Summer Youth

Municipality	# of Participants
Waukegan	57
Zion	37
N. Chicago	50
Mundelein	20
Round Lake	7
Beach Park	8
Gurnee	6

Workforce Development Participants

- Race/Ethnicity

- White 43%
- Black 26%
- Hispanic 26%

Education Level

- HS Drop-Out 9%
- HS Grad 46%
- 4 Year Degree 28%

Additional Demographics

- Low Income 44%
- UI Recipient 41%
- Basic Skills Deficient 49%
- Disconnect Youth 34%

Additional Demographics

- Disabled 10%
- Veteran 4%
- Ex-Offender 10%
- SNAP Recipient 34%

Workforce Development Programs



Revive Lake County



Workforce Development Programs





TRAINING • CONNECTING • DEVELOPING ILLINOIS' WORKFORCE

A proud partner of the [americanjobcenter](#) network





LakeCounty

Workforce Development Board
Workforce Development Department

Jennifer Serino

Director

Jserino@lakecountyil.gov

Demar Harris

Program Director

Dharris@lakecountyil.gov

Laura Gergely

Board Coordinator

Lgergely@lakecountyil.gov



TRAINING • CONNECTING • DEVELOPING ILLINOIS' WORKFORCE

A proud partner of the [americanjobcenter](#) network