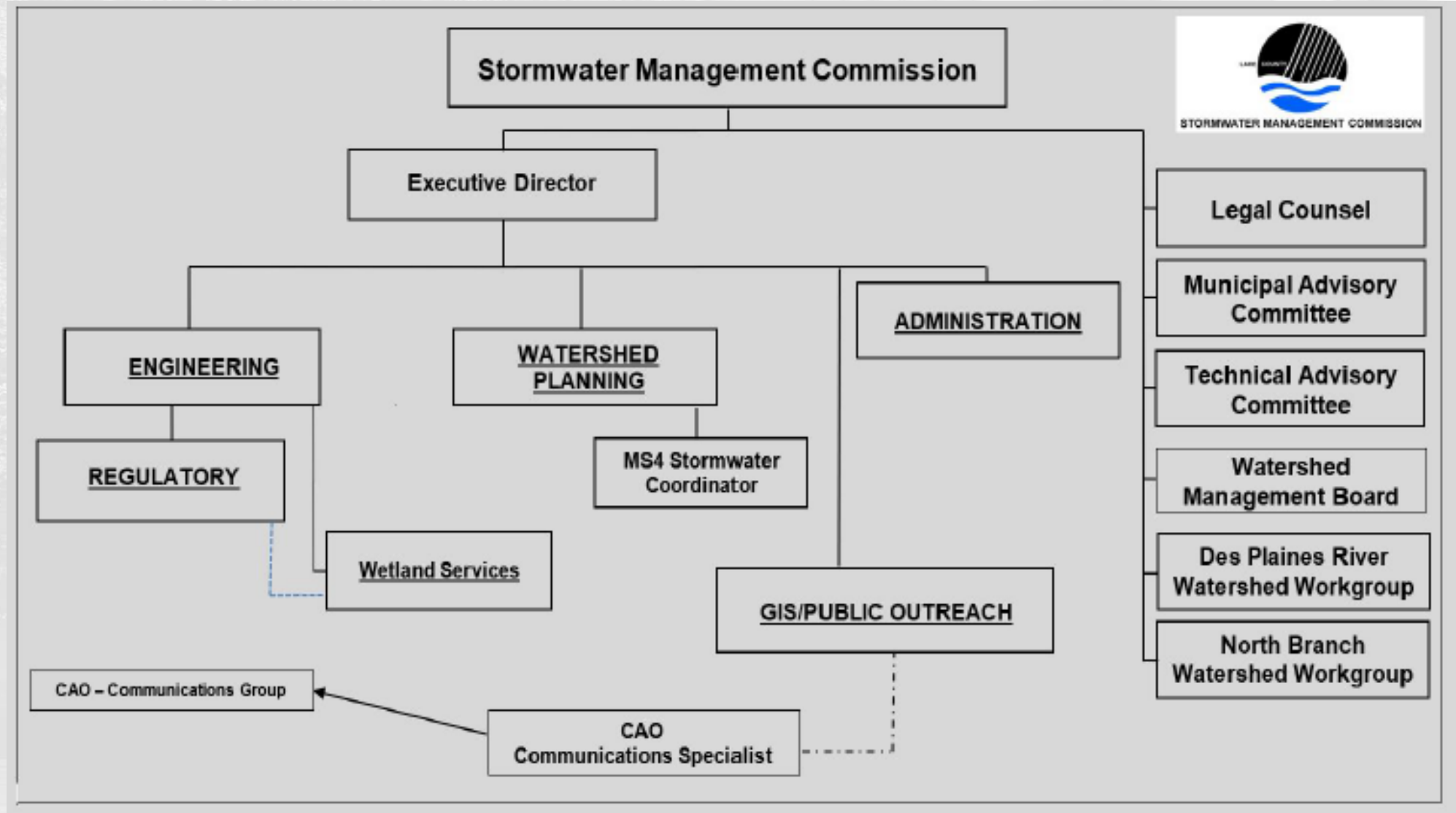




# Stormwater Management Commission Energy and Environment Committee Overview

---

# The Commission



# SMC Business Functional Categories

- PLANNING - Watershed Planning Specific, includes Project and Program Management, Grant Procurement and Mngt
- ENGINEERING - Design, Construction Mngt, Maintenance, Project and Program Mngt, Grant Procurement and Mngt
- REGULATORY - Development Permits, Designated Erosion Control Inspector; Enforcement Officer; Certified Wetland Specialist; Community Certification, + Federal/State Countywide Regulation Compliance
- GIS/Public Outreach - Mapping/Analysis support for project work; Public/Tech Group/Governmental Interactions and Engagement
- Administration - Financial, Grant Support, Reporting, Hiring, HR and FAS Liaison



# SMC Committee/County Board Items

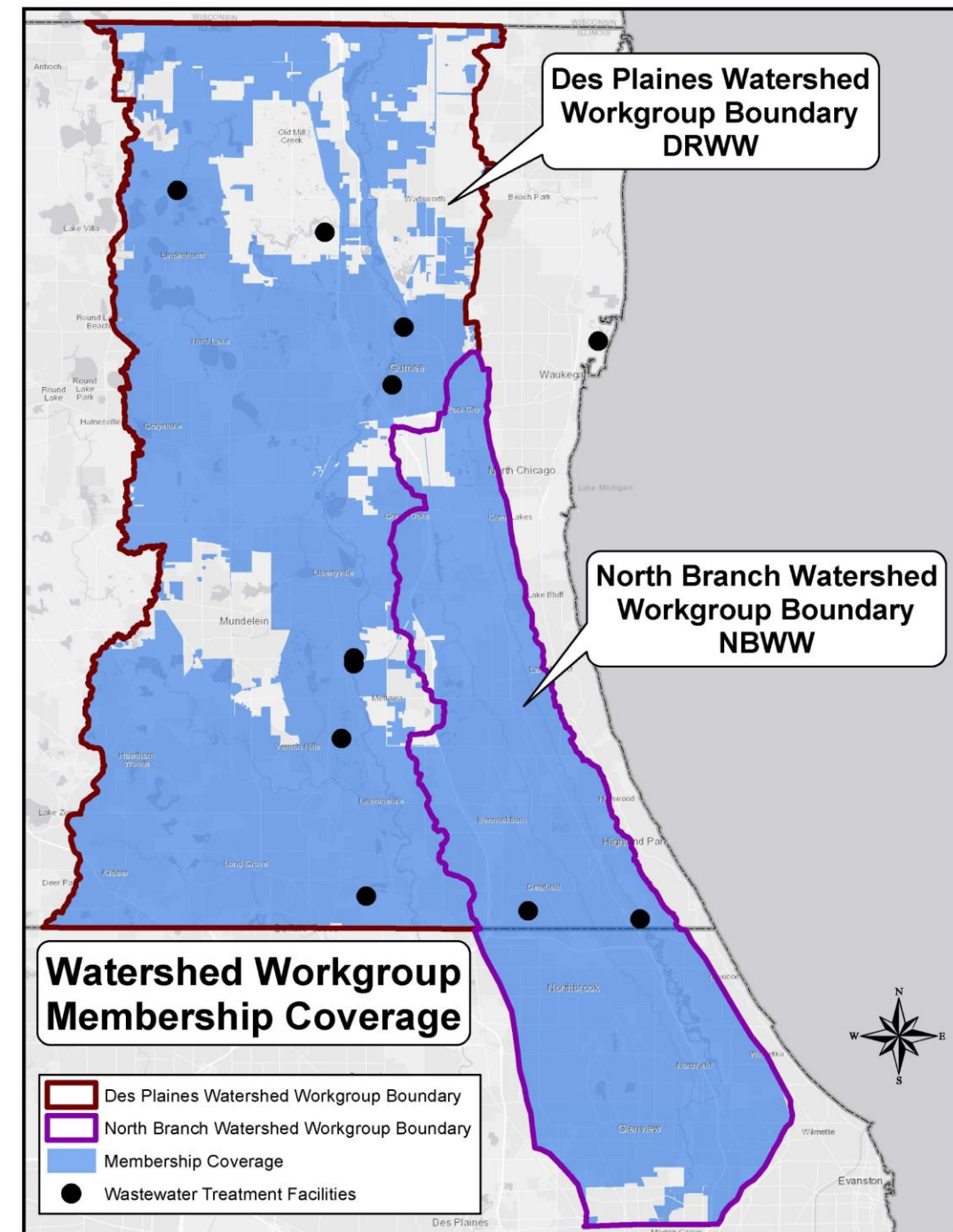
- Fiscal Year Budget Approvals
- Emergency Appropriations (Grants Received)
- Grant Application Approvals (Cash Match)
- Watershed Development Ordinance Amendments
- SMC Related Legislation Issues
- Specialized Ordinances/Financial Actions
- Sustainability: Practices, Projects, Programs, and Improvements

# E&E Committee This Month!

- Des Plaines Watershed Workgroup
- North Branch Chicago River Watershed Workgroup
- Floodplain Property Buyouts and Site Restoration

# Watershed Workgroups in Lake County

- Why form a Workgroup?
  - Who is Involved?
1. Des Plaines River Watershed Workgroup
    - 200 square miles
    - Lake County
  2. North Branch Chicago River Watershed Workgroup
    - 94 square miles
    - Lake & Cook County

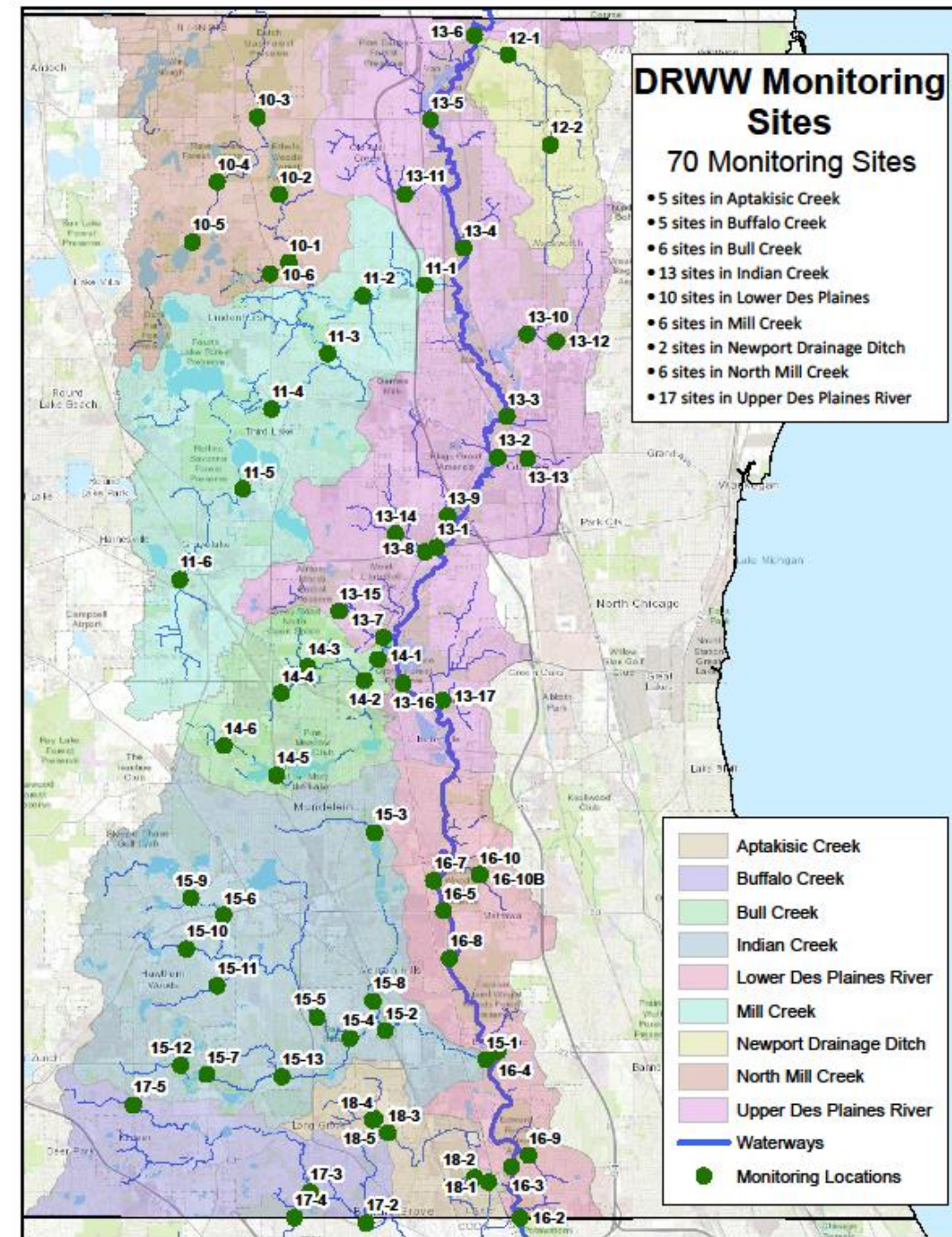






# DES PLAINES RIVER WATERSHED WORKGROUP

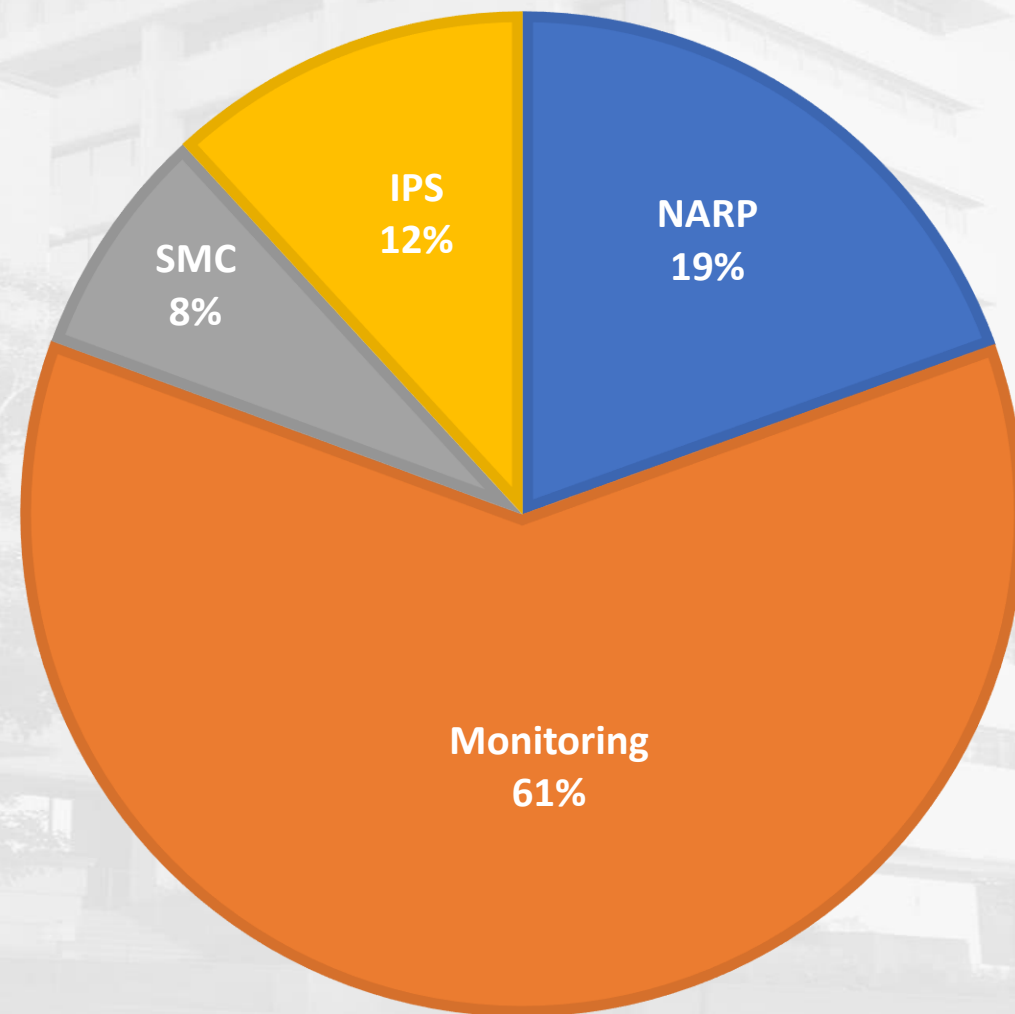
- Mission
- Goals
- 32 Members
  - 19 Municipalities
  - 2 Townships
  - 6 POTWs
  - Lake County – PW, DOT, LCHD, SMC
  - LCFPD
  - 1 Park District
  - 2 Consultants, 1 Not-for-Profit





# DES PLAINES RIVER WATERSHED WORKGROUP

- **2019 Priorities**
  - - Monitoring
  - - Integrated Prioritization System (IPS)
  - - Nutrient Assessment and Reduction Plan (NARP)
  - - Education/training opportunities
- **2019 Budget - \$330,657**
  - Monitoring – \$202,053
  - NARP - \$64,500
  - IPS – \$39,104
  - SMC- Admin/Technical/Coord – \$25,000

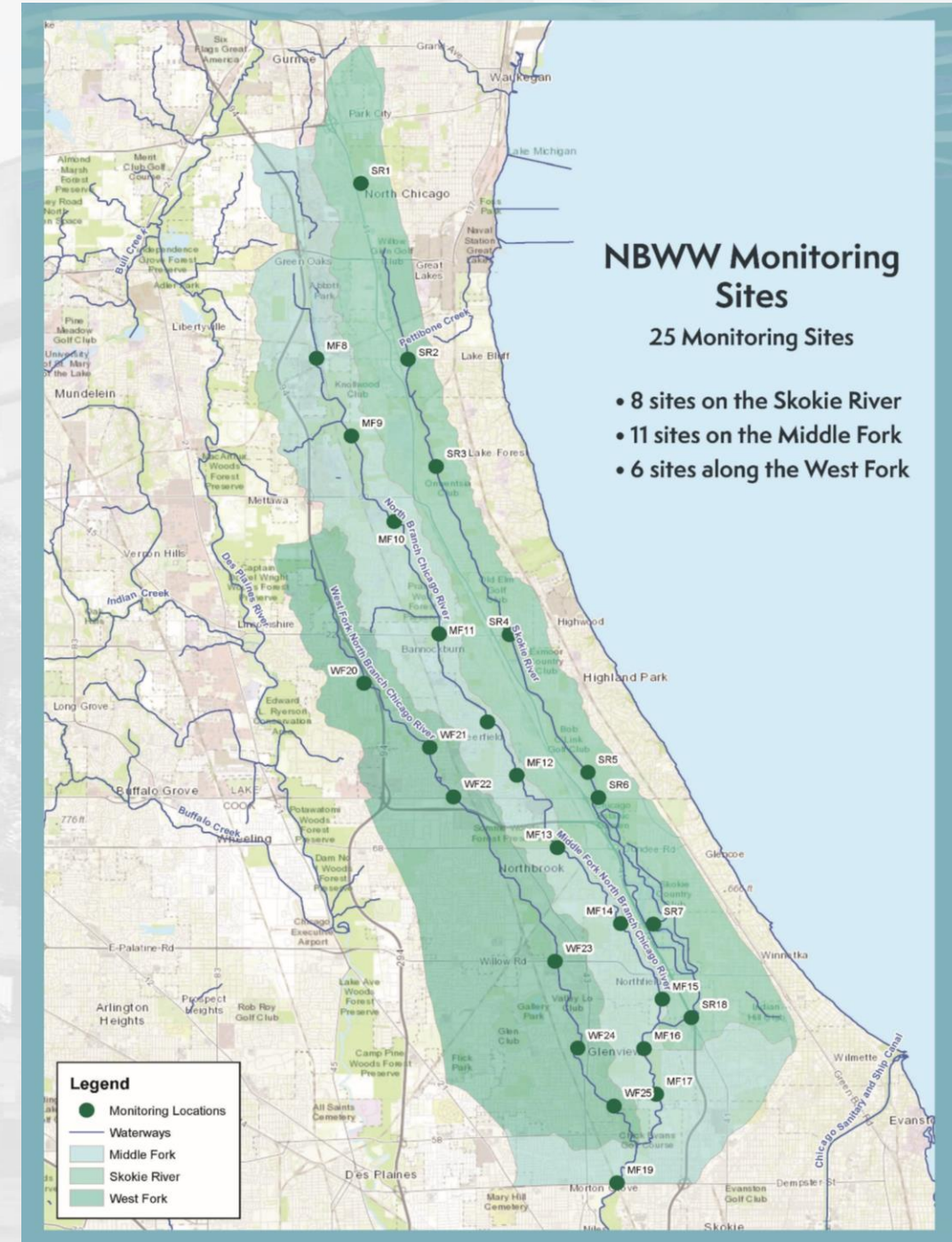






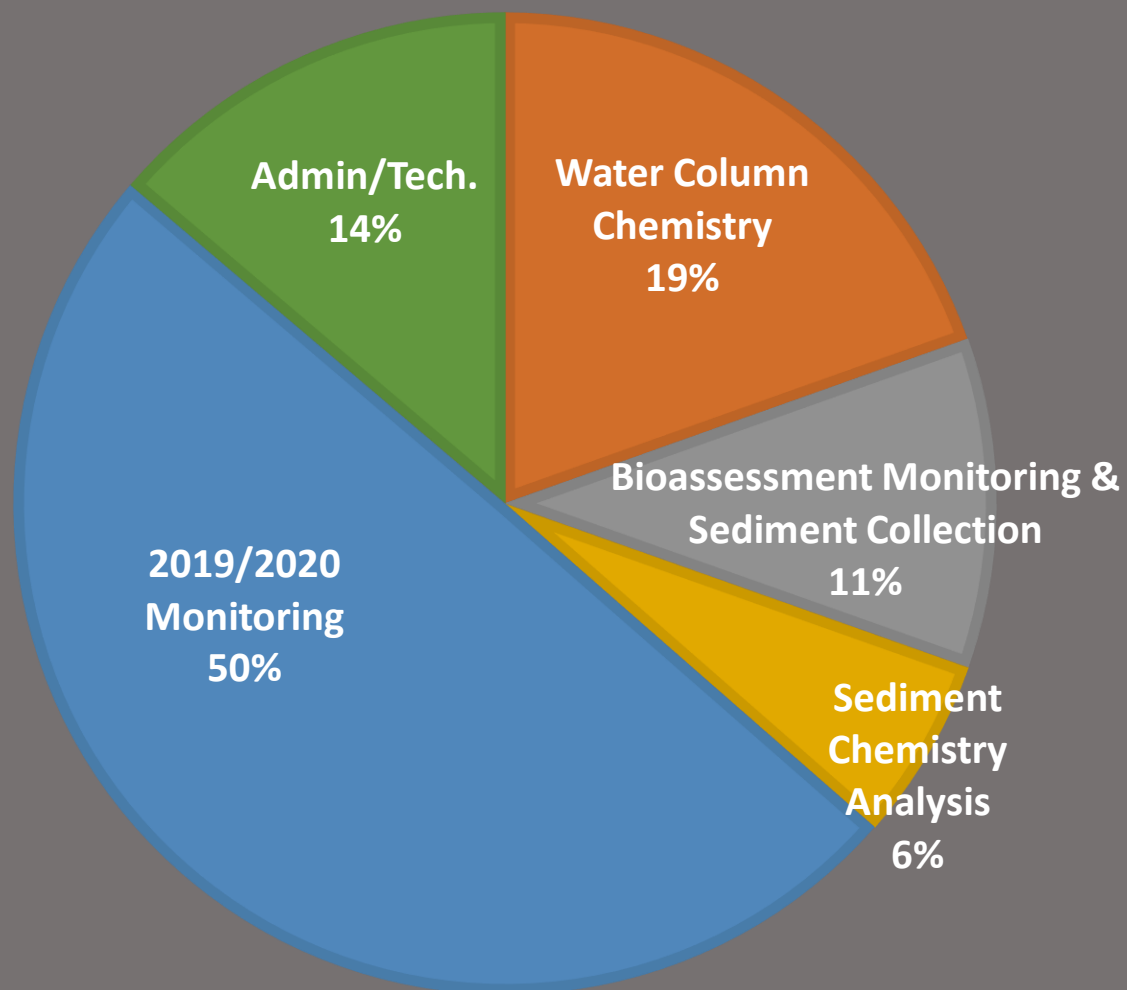
# NORTH BRANCH CHICAGO RIVER WATERSHED WORKGROUP

- NBWW Mission & Goals
- Interjurisdictional Coordination
- 37 Members
  - 16 Municipalities
  - 2 Townships
  - 2 POTWs
  - 2 Drainage Districts
  - 2 Counties – Multiple Depts.
  - 2 Forest Preserve Districts
  - 1 Park District
  - 5 Consultants, 2 Not-for-Profits





## NORTH BRANCH CHICAGO RIVER WATERSHED WORKGROUP



- 2019 Priorities
  - Continue Monitoring
    - Analyze 1st year results
  - Support Watershed Plan Update
  - Continue Providing input to TMDL
  - Education/training opportunities
- 2019 Budget - \$181,548
  - Monitoring – \$156,548
    - Water Column Chemistry
    - Bioassessment Monitoring & Sediment Collection
    - Sediment Chemistry Analysis
    - 2019/2020 Monitoring
  - Admin (SMC) & Technical Services - \$25,000



# Current Sustainability/ Resiliency Initiatives

## Flood-prone Property Buyouts

- One of the most effective long-term flood mitigation tools
- Eliminates Future Flood Damage and Emergency Response Need
- Funding Combination: Federal, State, County, Municipal/Local
- Homeowner receives pre-flood value
- Property Owned and Managed Long-term by local government





# Flood-Prone Property Buyout Program

---

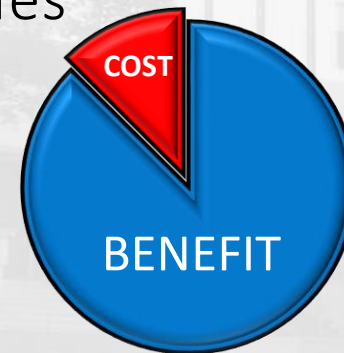
✱ Acquisition is the most cost-effective mitigation strategy for flooding.

✱ \$17 Million to acquire ~200 properties since 1998.

✱ \$5.6 Million to acquire another 19 properties pending

✱ 100 + Local, State & Federal Partners/Agencies

✱ 7:1 is the average Benefit-Cost-Ratio (BCR)  
for acquisitions<sup>1</sup>



<sup>1</sup> "Natural Hazard Mitigations Saves: 2017 Interim Report" published by the Multi-hazard Mitigation Council (2017).

# Lake County and Federally Declared Disasters

---

✧ 10 Federally Declared Disasters since 1996 (one every 2.2 years).

✧ \$11 million of HMGP for ~175 properties

✧ 65% of funding is related to disasters

✧ \$4 million of PDM funding to acquire 13 properties.

✧ 24% of funding is Pre-Disaster Mitigation

✧ \$694K of FMA funding to acquire 3 properties.

✧ 4% of funding comes from NFIP premiums.

✧ \$1.2 million of IDNR-OWR funding to acquire 9 properties.

✧ 7% of funding comes from State Flood Mitigation.



## Landslide & Flood- Prone Buyout Project

Total Project Cost:  
**\$1,595,978**

Local, State & Federal  
Partners/Agencies:  
**27**

Number of Properties:  
**4**













# Coming Next Month!

- *Stream Restoration and Fluvial Geomorphology*
- *Watershed Planning*
- *Multi-Benefit Flood Storage/Wetland Mitigation/Habitat*



QUESTIONS?

THANK YOU