

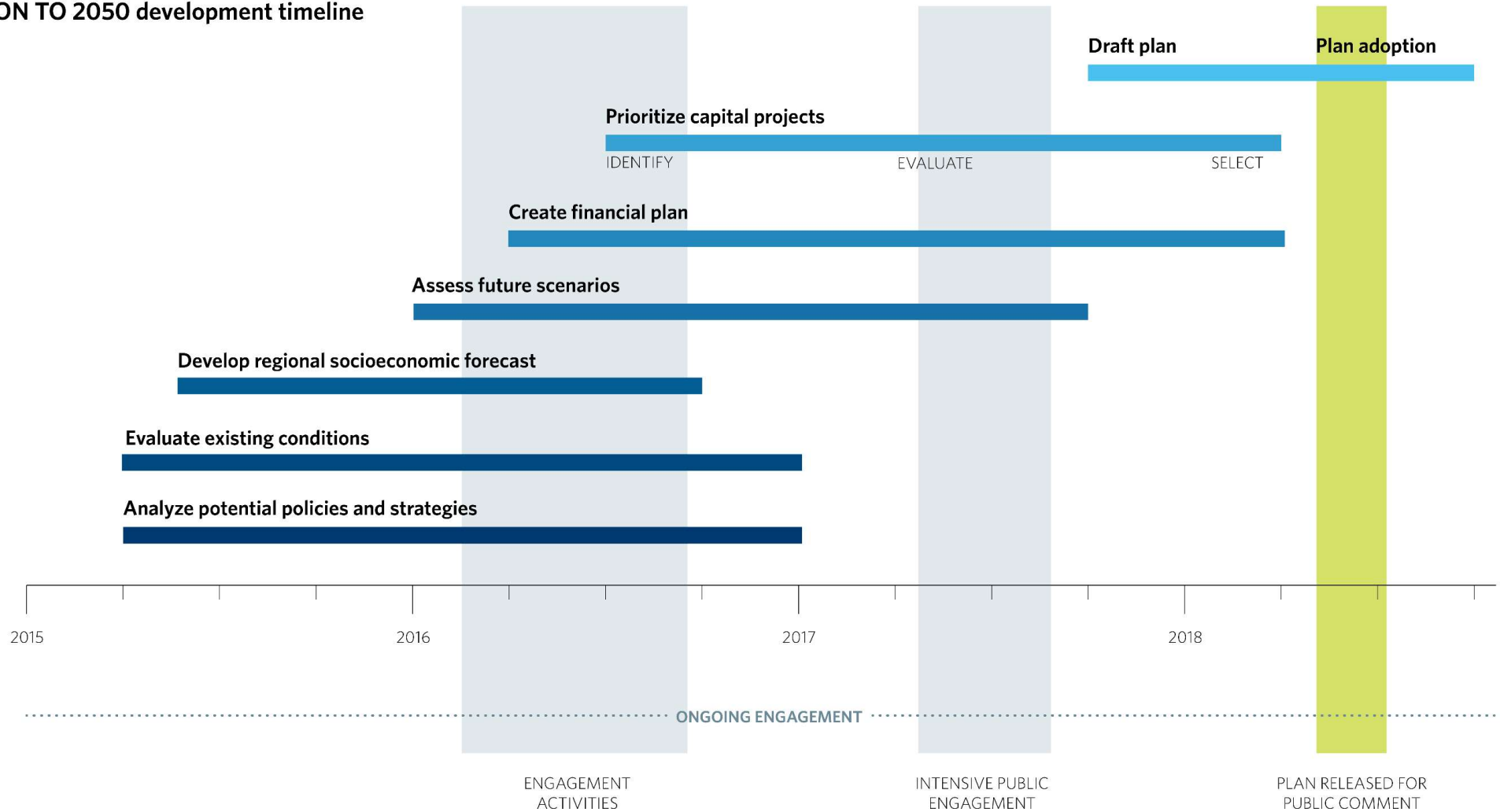


# ON TO 2050

March 8, 2019

# How we got here

## ON TO 2050 development timeline





10  
Forums



277  
Workshops



100,000+  
Kiosk interactions



4,750  
Residents



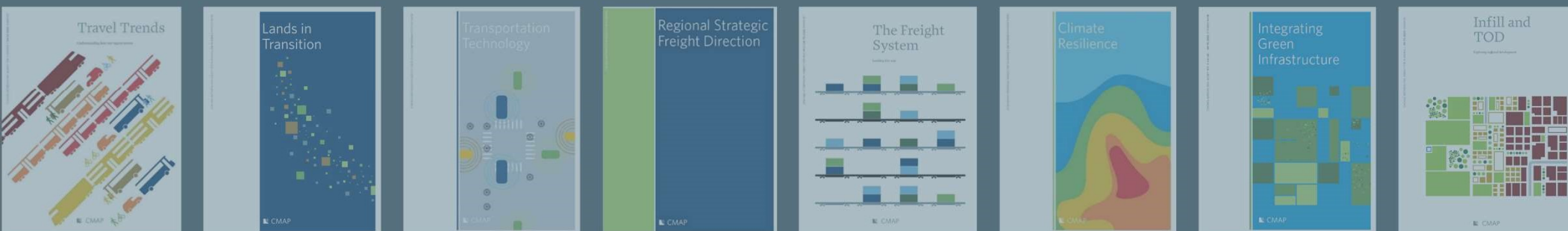


9

Snapshots

23

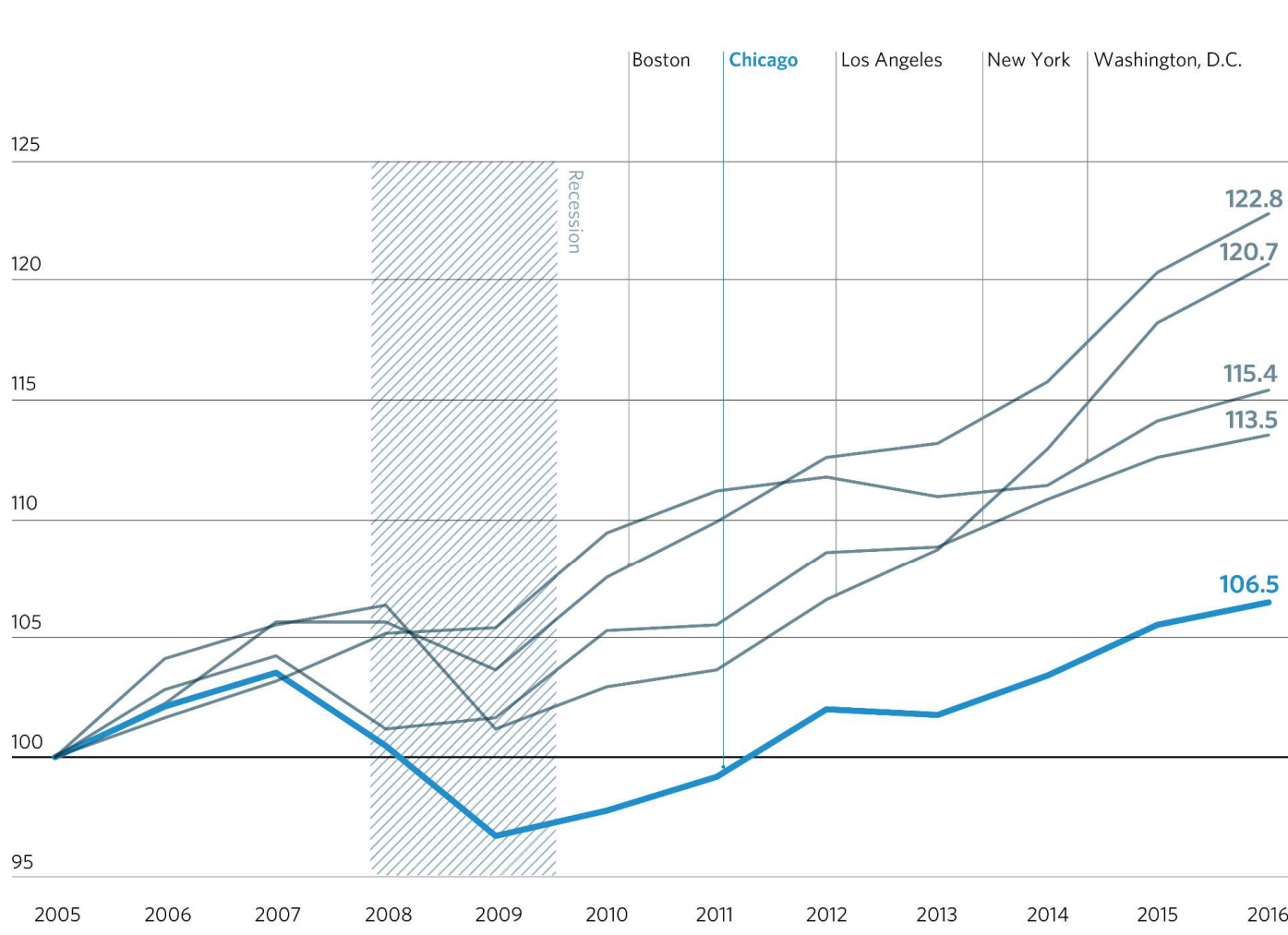
Strategy Papers



# The region today

Cumulative real gross regional product growth in select metropolitan statistical areas, 2005-16

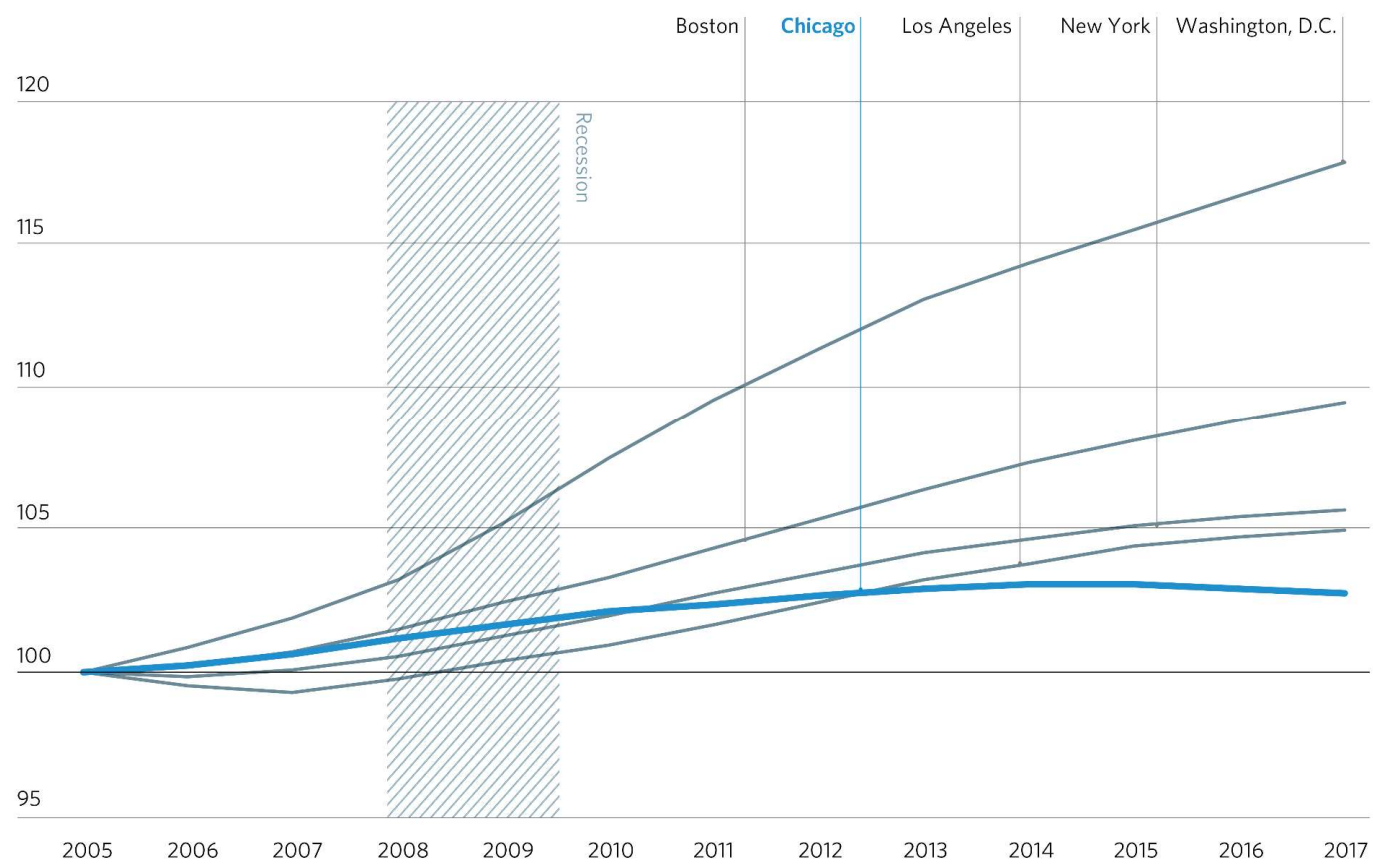
Note: Index year 2005.  
Source: Chicago Metropolitan Agency for Planning analysis of U.S. Bureau of Economic Analysis data.



# Cumulative population change in select metropolitan statistical areas, 2005-17

Note: Indexed to year 2005

Source: Chicago Metropolitan Agency for Planning analysis of U.S. Population Estimates Program data.

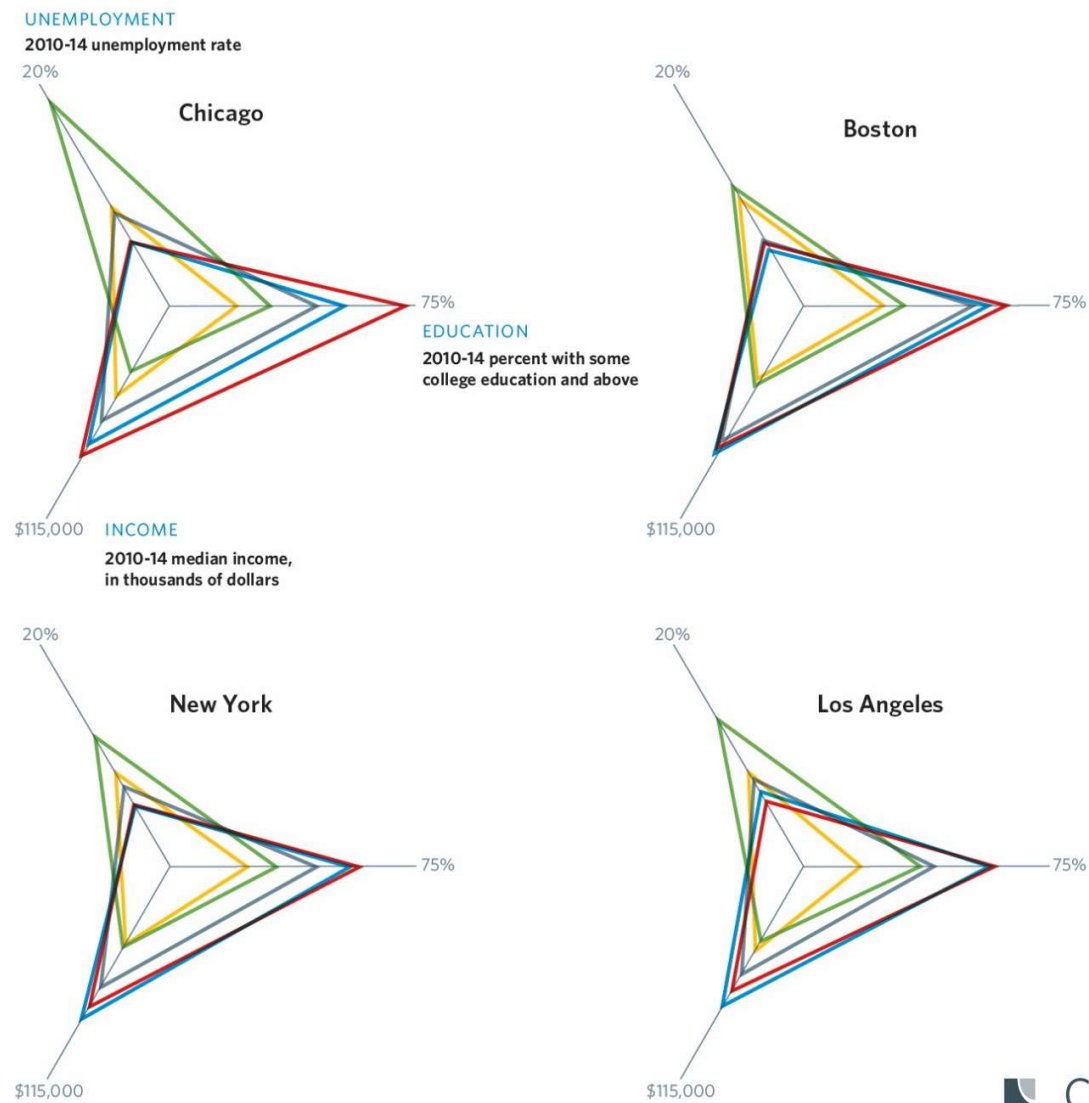


# Disparate outcomes by race/ethnicity in select metropolitan statistical areas, 2010-14

- Black
- Hispanic
- White
- Asian
- Regional average

Note: Unemployment is for population age 16 and above. The Bureau of Labor Statistics provides regional unemployment rates used in other CMAP products. Census unemployment is behind current rates, but is the most appropriate source to analyze unemployment by race.

Source: Chicago Metropolitan Agency for Planning analysis of American Community Survey Data 2010-2014; Note: 2014 inflation adjusted dollars; median incomes rounded to the nearest thousand.



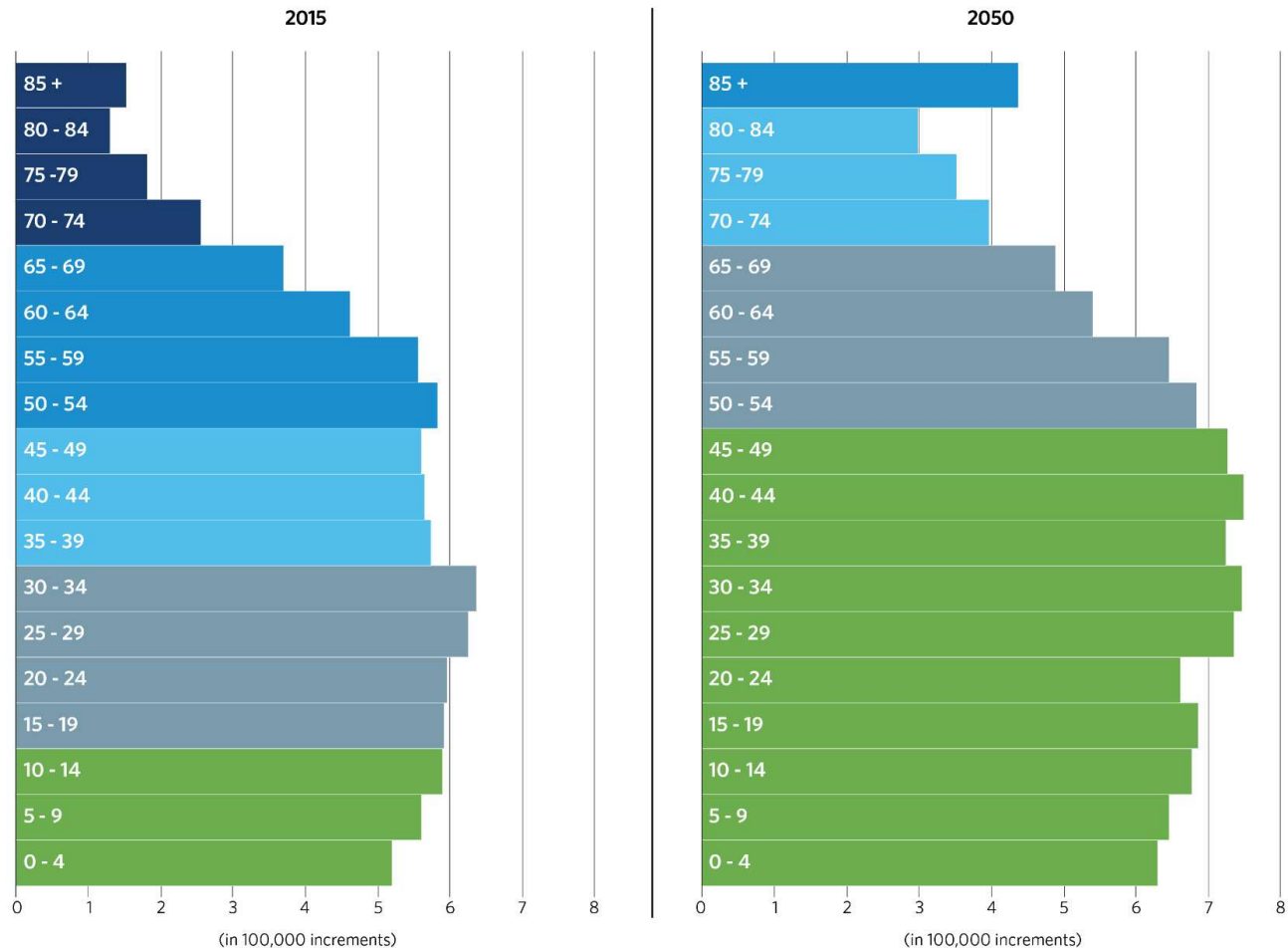
# Population change by age group and generation, 2015 estimate and 2050 forecast

## Age groups by generation name and years born

- Silents/Traditionals (1931-45)
- Baby Boomers (1946-65)
- Gen X (1966-80)
- Millennials (1981-2000)
- Gen Z and later (2001+)

Note: CMAP may provide minor updates and adjustments to the forecast prior to ON TO 2050 approval.

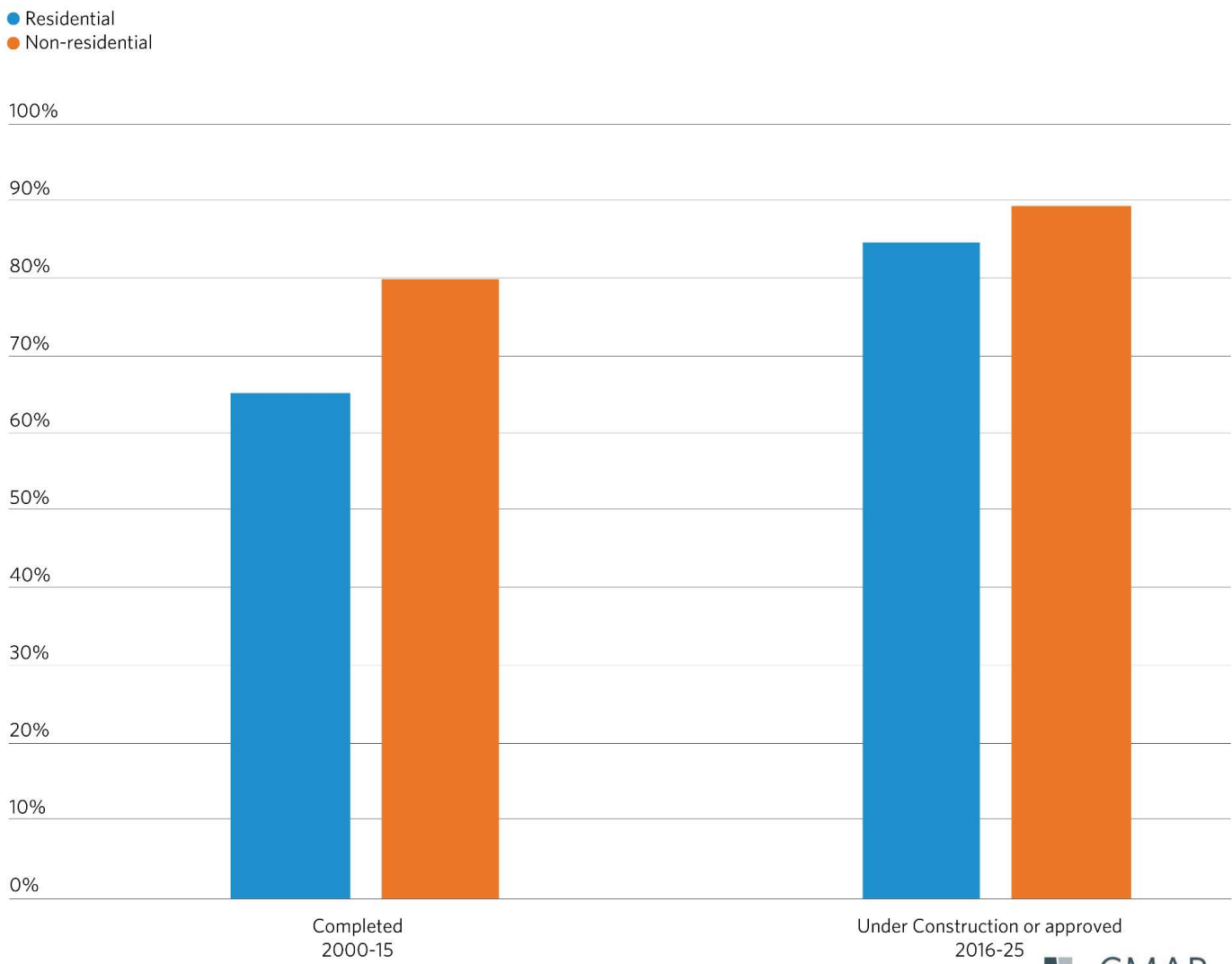
Source: Chicago Metropolitan Agency for Planning draft ON TO 2050 socioeconomic forecasts.





**Proportion of development occurring within highly and partially infill supportive areas, completed and under construction/approved**

Source: Chicago Metropolitan Agency for Planning analysis of Northeastern Illinois Development database.



An aerial night view of a city, likely New York City, showing a dense grid of streets and buildings illuminated by city lights. The sky is a mix of orange and blue, suggesting sunset or sunrise. The title 'Inclusive Growth' is overlaid in large white letters.

# Inclusive Growth

**Grow the economy through opportunity for all**



A group of people, including adults and children, are walking and cycling on a paved path. The path is surrounded by greenery and trees. The word "Resilience" is overlaid in large white text.

# Resilience

Prepare for rapid changes,  
both known and unknown



# Prioritized Investment



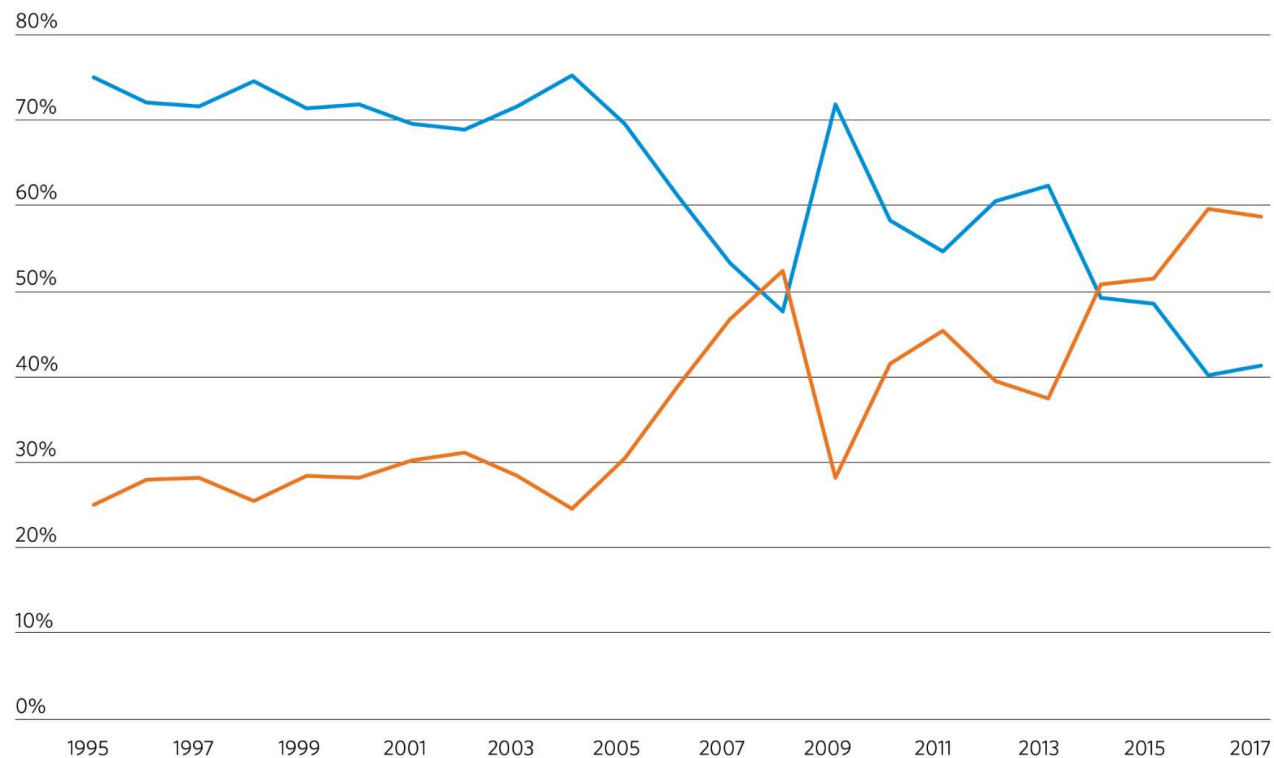
Target resources to maximize benefits

# ON TO 2050 goals

# Community

## Proportion of permitted new housing units in the Chicago MSA, by units in structure

● 1 unit  
● 2 or more units



Note: Economic impact analysis includes both direct and indirect effects.

Source: Chicago Metropolitan Agency for Planning analysis of U.S. Census annual building permit data for the Chicago Metropolitan Statistical Area.



# Community goals

# GOAL: Strategic and sustainable development





# GOAL: Reinvestment for vibrant communities





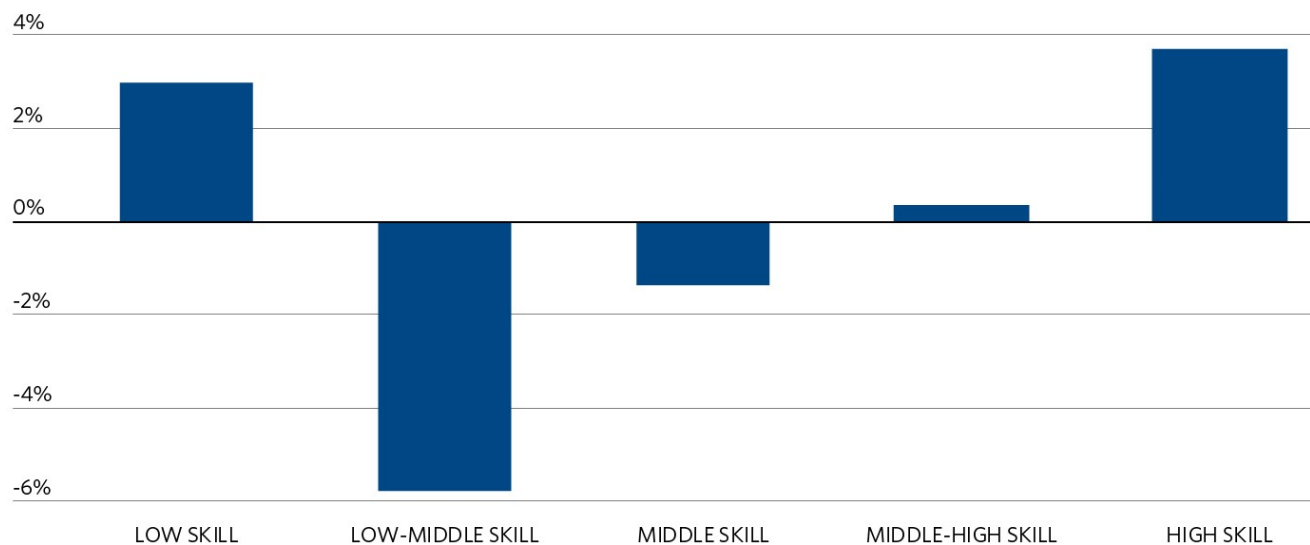
**GOAL: Development that  
supports local and  
regional economic  
strength**

# Prosperity

**Change in share of U.S. employment, 1980-2016, by occupation skill level**

Note: Median occupational wage in 1980 is used as a proxy for skill.

Source: Chicago Metropolitan Agency for Planning analysis of Integrated Public Use Microdata Series, 1980-2000 Decennial Census and 2010-16 American Community Survey data.



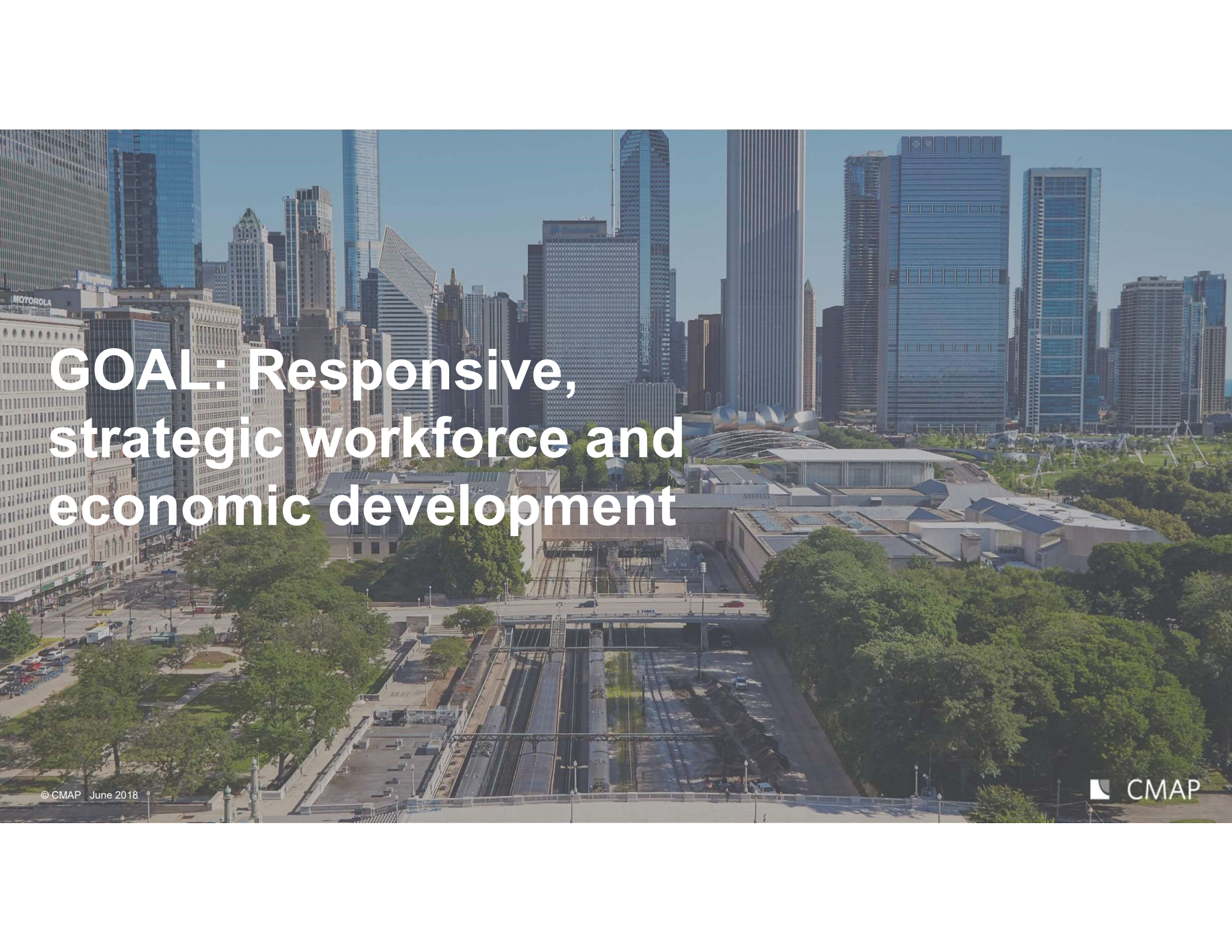
# Prosperity goals



A photograph of a person stepping off a train at a station. The person is wearing yellow pants and dark shoes, and is carrying a white shopping bag with the text "goldstar let's get together YEAH, YEAH, YEAH!!" and a cartoon illustration. The train is silver and has a blue tactile paving strip on the platform. In the background, another person is standing on the platform, and a sign for "Howard" is visible. The scene is set in an urban environment with buildings in the background.

# GOAL: Robust economic growth that reduces inequality

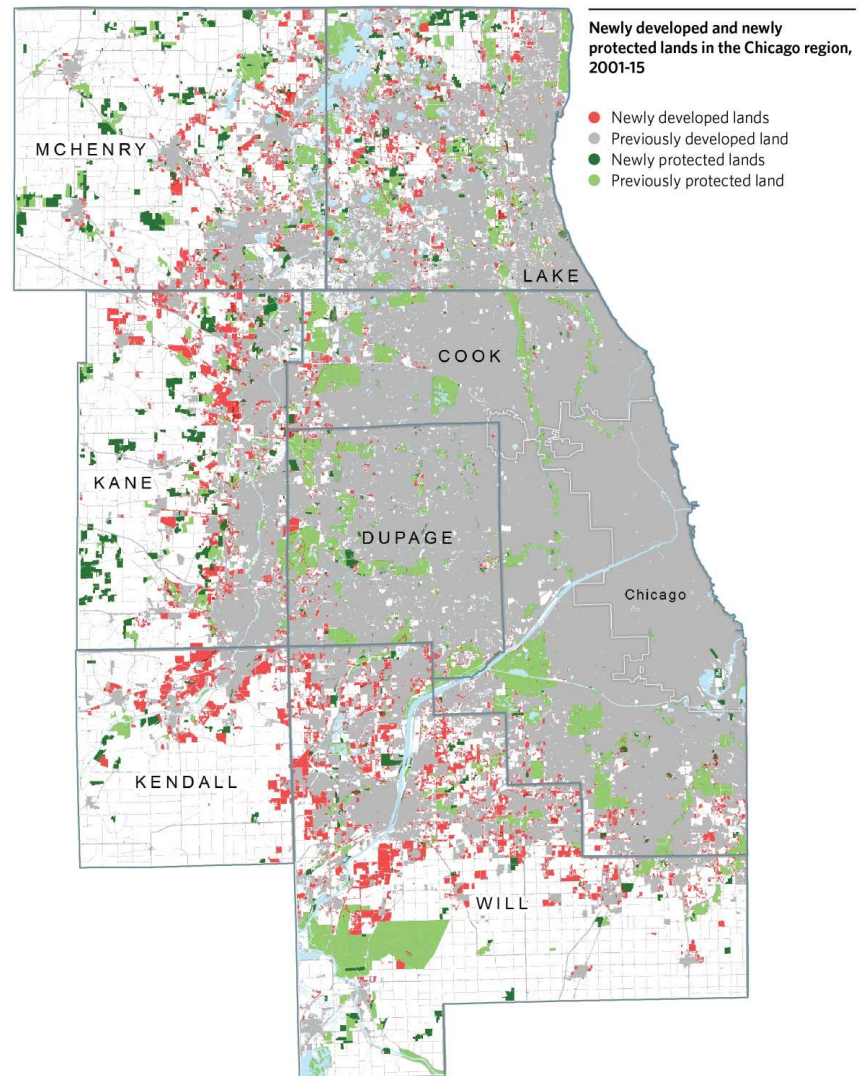




# GOAL: Responsive, strategic workforce and economic development



# Environment



# Environment goals

A photograph of a bridge at sunset. The sun is low on the horizon, casting a warm orange glow. Several people are on the bridge: a woman in a pink tank top is running towards the camera, a man in a black shirt is running away, a person with a backpack is cycling away, and a person in a blue shirt is pushing a stroller away. The bridge has metal railings and streetlights are visible in the background.

# GOAL: A region prepared for climate change

An aerial photograph of a flooded landscape. In the foreground, a small boat moves across the dark water, leaving a white wake. The water has inundated green fields and clusters of trees. In the background, a dense line of trees marks the horizon under a cloudy sky.

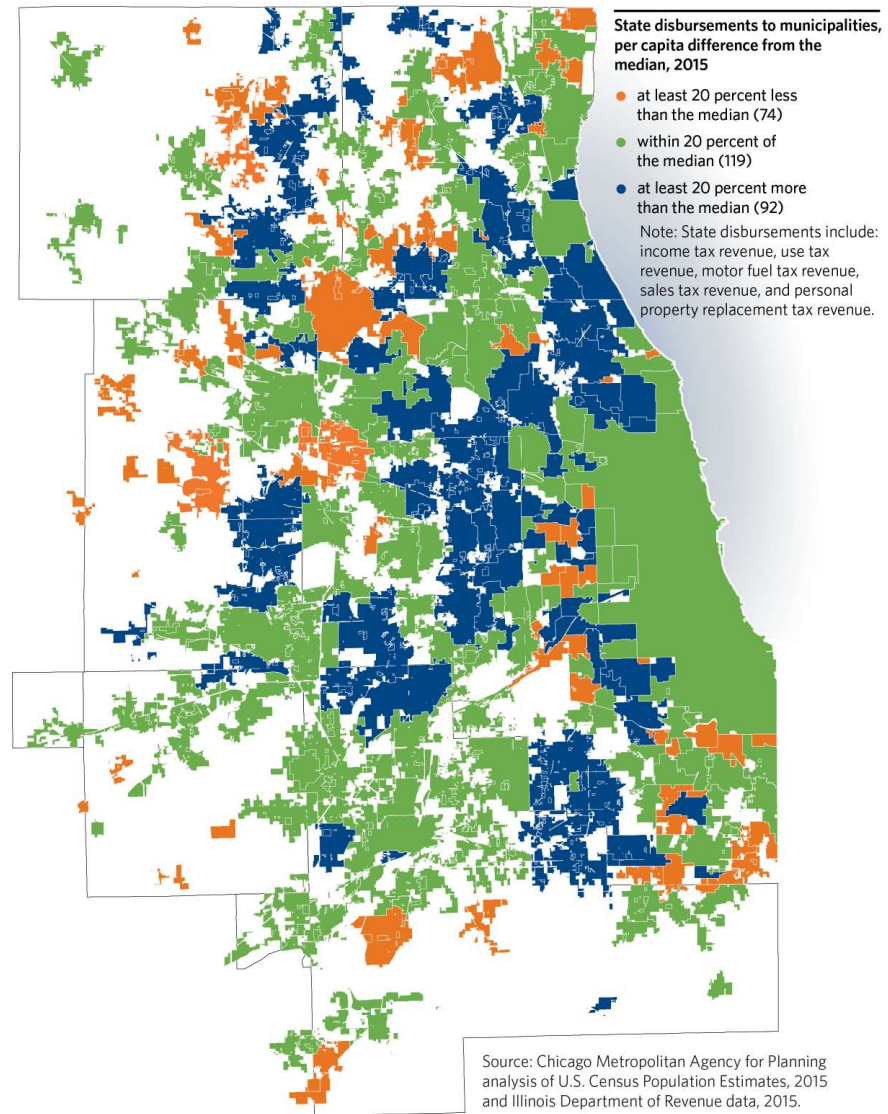
# GOAL: Integrated approach to water resources



A photograph of a paved path winding through a dense forest. Two cyclists are riding away from the camera on the path. The trees are lush green, and sunlight filters through the canopy. The text 'GOAL: Development practices that protect natural resources' is overlaid on the left side of the image.

**GOAL: Development  
practices that protect  
natural resources**

# Governance



# Governance goals





**GOAL: Collaboration at  
all levels of government**





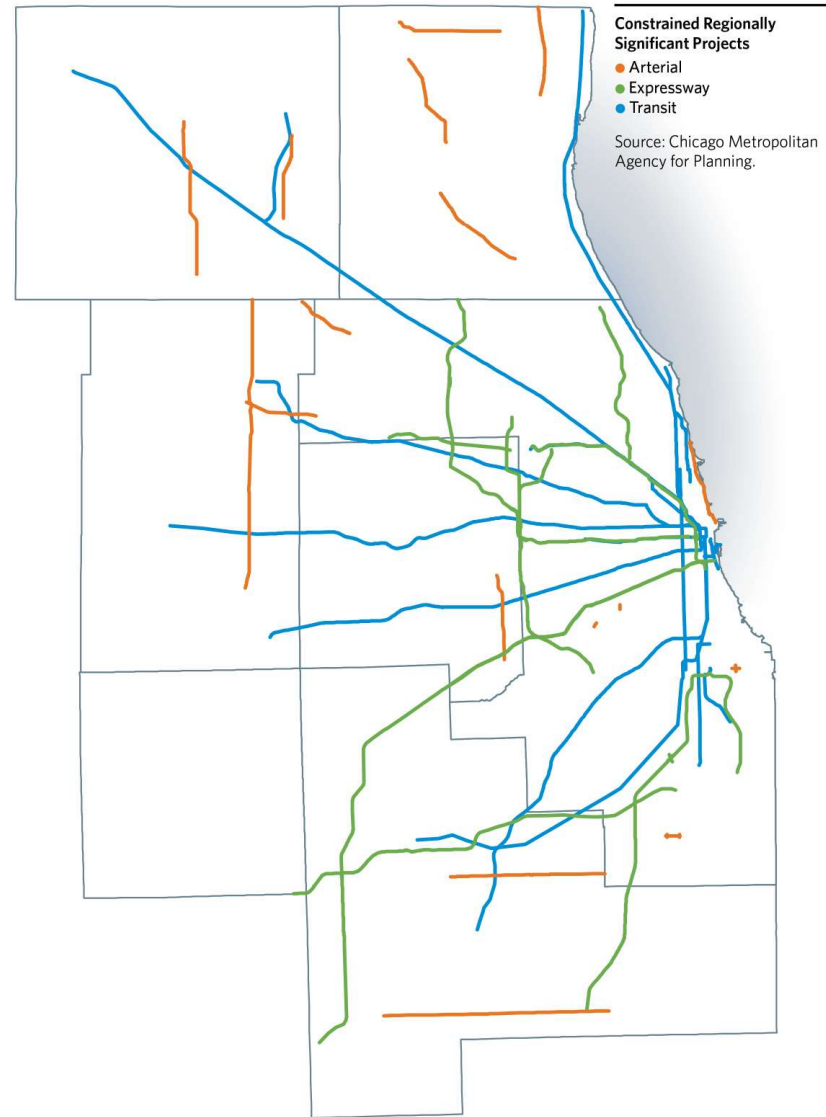
**GOAL: Capacity to  
provide a strong quality  
of life**



# GOAL: Data driven and transparent investment decisions


# Mobility

© CMAP June 2018





# Mobility goals

A photograph of a busy city street, likely in Chicago, showing a CTA train on an elevated track, several buses (one labeled 'CLARK', another 'COLUMBUS', and a third '50 TO RANDOLPH'), taxis, and cars. Pedestrians are visible on the sidewalks. The scene is overlaid with a semi-transparent dark grey box containing white text.

**GOAL: A modern, multimodal  
system that adapts to  
changing travel demand**





**GOAL: A system that works  
better for everyone**

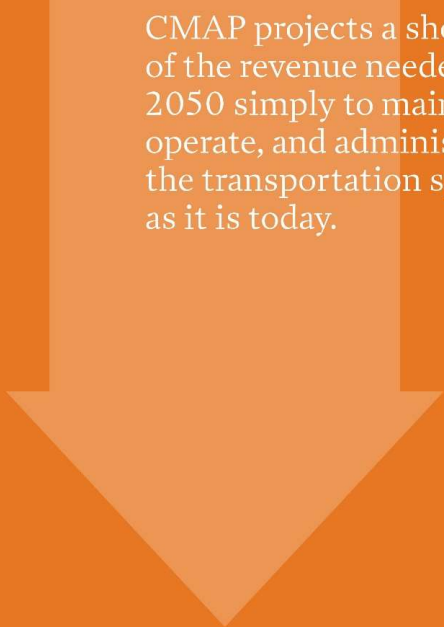


A large yellow crane is lifting a large concrete slab at a construction site. The crane is positioned on a flatbed trailer. In the background, there is a two-story building with a red roof and many windows. The sky is clear and blue. The text "GOAL: Making transformative investments" is overlaid on the left side of the image.

# GOAL: Making transformative investments

## Making transformative investments

**\$24  
Billion**



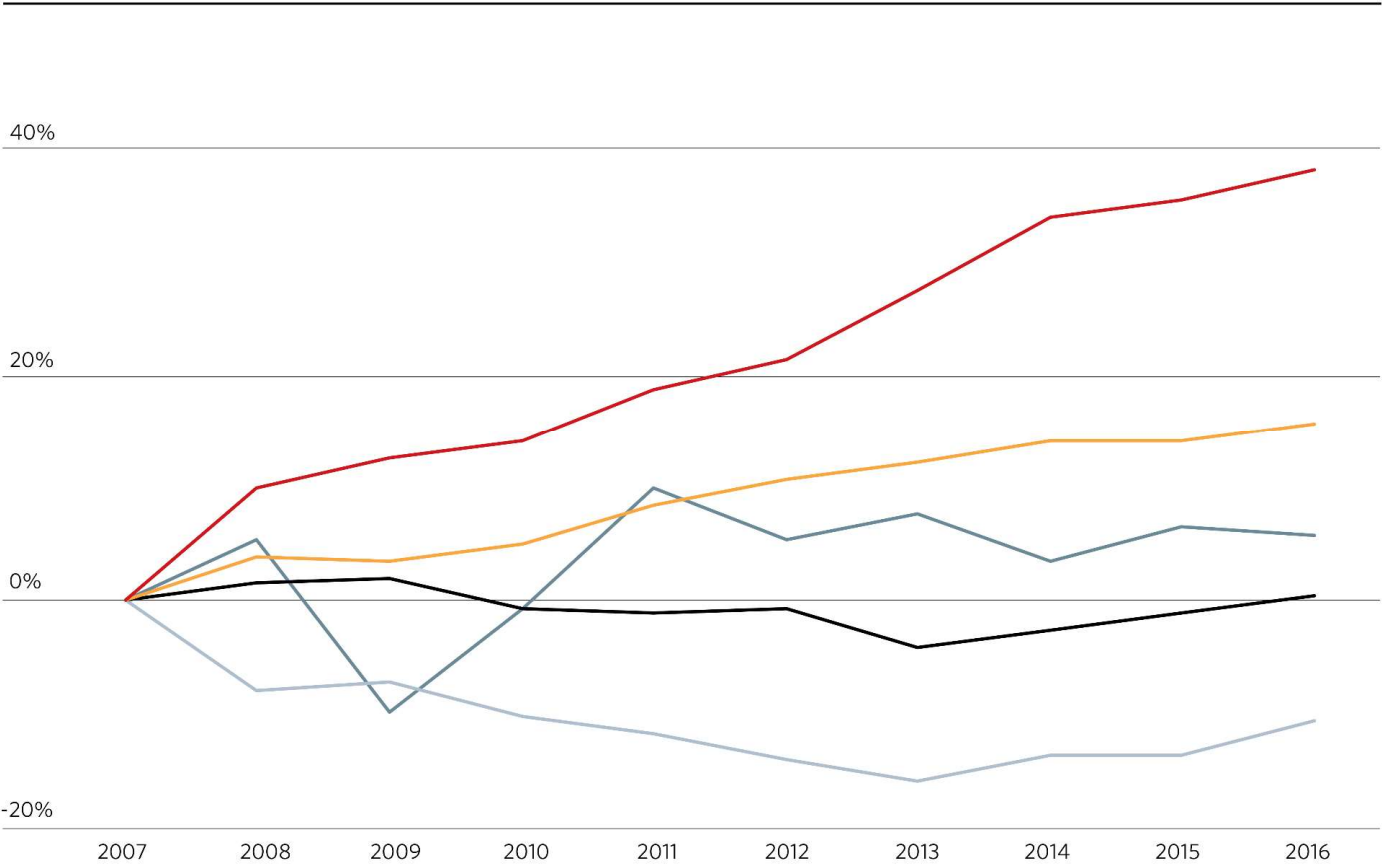
CMAP projects a shortfall of the revenue needed by 2050 simply to maintain, operate, and administer the transportation system as it is today.

# Select transportation revenues and operating costs, 2007-16

- Federal revenues
- State motor fuel revenue
- State motor vehicle registration fee revenue
- Selected transportation system operating costs
- Consumer price index for all urban consumers

Note: Percent change since 2007. Federal transportation revenue excludes revenue for 2009 from the American Recovery and Reinvestment Act. Transportation operating costs include those incurred by IDOT's District One, Illinois Tollway, RTA, and all transit service boards.

Source: Chicago Metropolitan Agency for Planning analysis of Illinois Department of Transportation (IDOT) data, Illinois Office of the Comptroller data, Regional Transportation Authority (RTA) data, and data derived from state/regional resources tables.

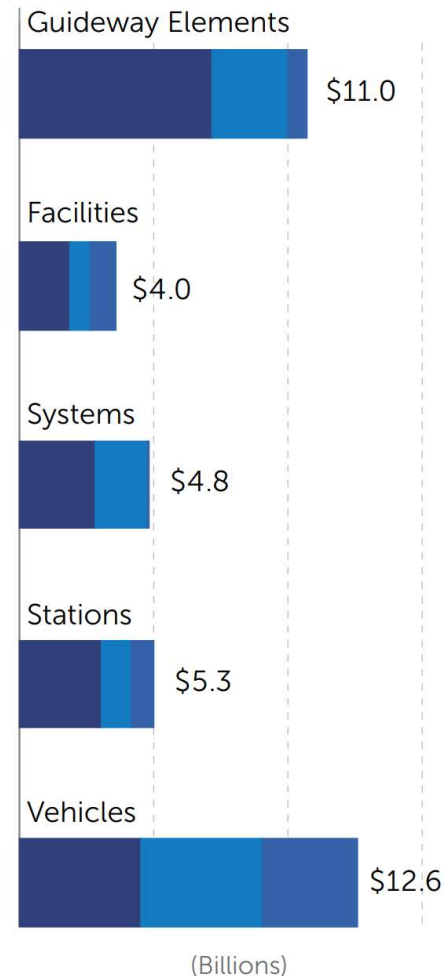




# Transit is the driver of the forecasted funding gap

© CMAP June 2018

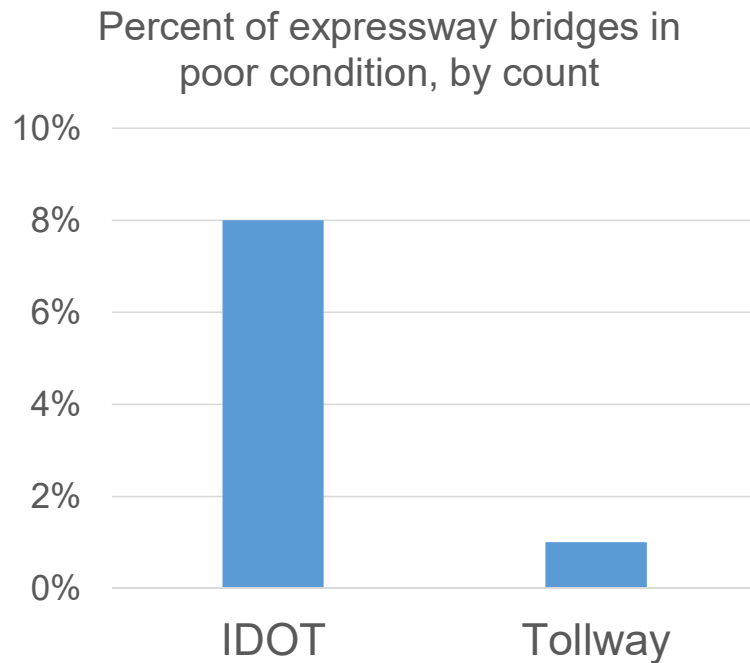
## Ten-Year Capital Investment Needs: \$37.7 Billion<sup>3</sup>



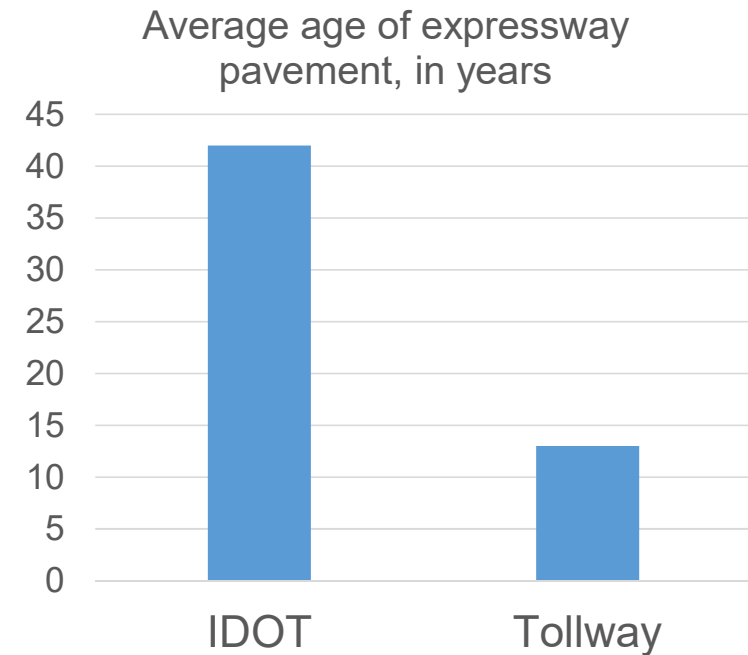
- Backlog of projects
- Due for replacement in next ten years
- Due for rehabilitation in next ten years

Source: Regional Transportation Authority

# Funding makes a difference for condition



Source: CMAP analysis of IDOT Structures file  
Includes ramps and crossing structures

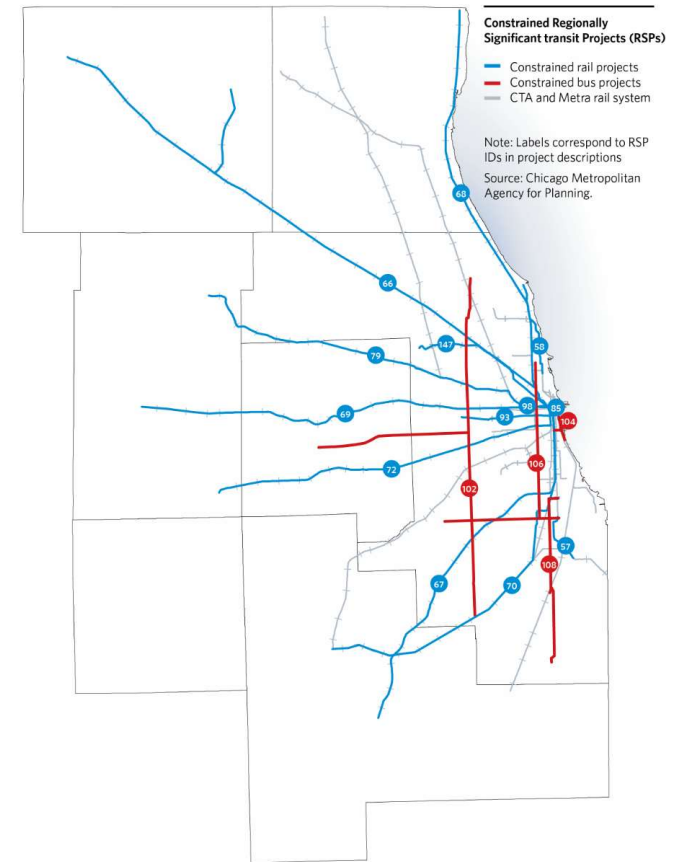
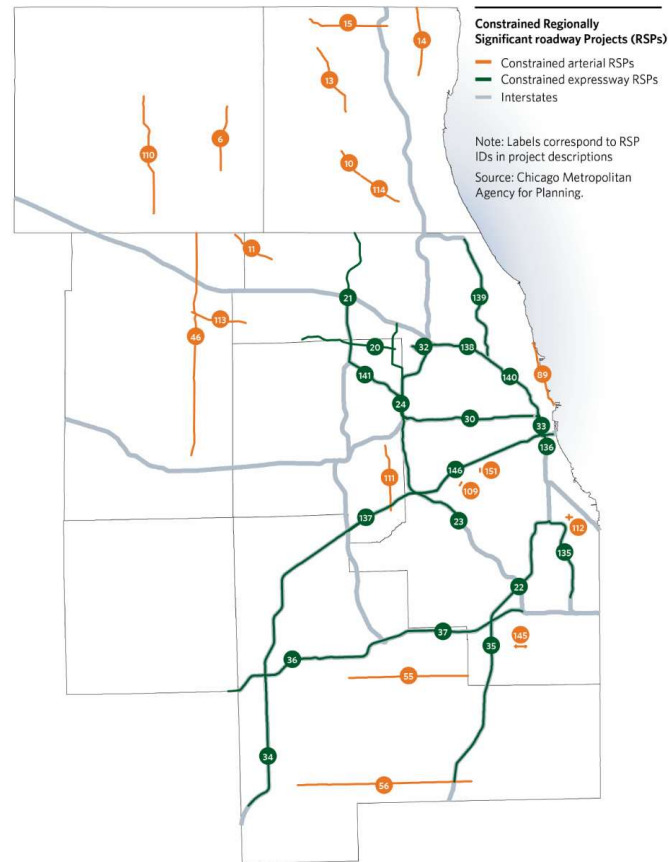


Source: CH2M

**The system will  
continue to decline  
without new  
revenues**



# Making transformative investments



**Implement  
performance-based  
programming to meet  
priorities in the most  
cost-effective way**

# Focus on implementation near- and long-term



# Questions?

[www.cmap.illinois.gov/onto2050](http://www.cmap.illinois.gov/onto2050)

Gordon Smith  
gsmith@cmap.illinois.gov