



LAKE COUNTY
Investing in People
and Our Communities

Public Works 2019 Workplan

March 6, 2019

2 Part Discussion

- 2018 Workplan Recap
 - Life cycle analysis example – wells



March

- System overview

- 2019 Workplan

- Lakes Region Sanitary District
- Sludge dryer
- Billing software implementation
- Inventory management
- Workload balancing
- Establish standing committees



April

2018 Workplan

Delivering Results



100% Compliance
Water/Wastewater test

Brooks Farm
Iron Treatment



Always Improving

Lakes Region Sanitary District
Analysis complete



Capital Improvement
Program Reset

eBNR
Sewer
Process



Workload Balancing



OPS & Maint
Merger

Life Cycle
Asset Manager

Taking care of our people



3 Year Union
Agreement



- New Hearing Conservation
- Facility 2yr risk assessment

Life Cycle - Wells

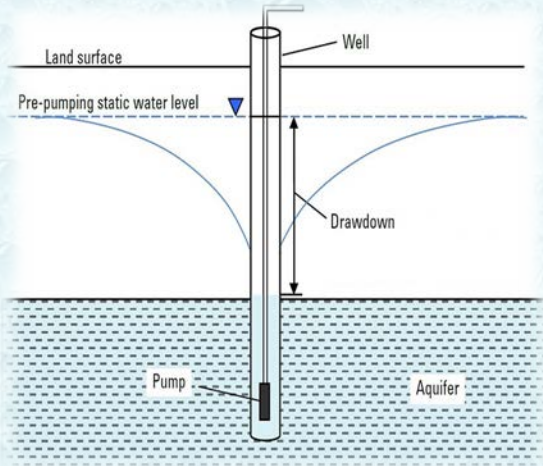


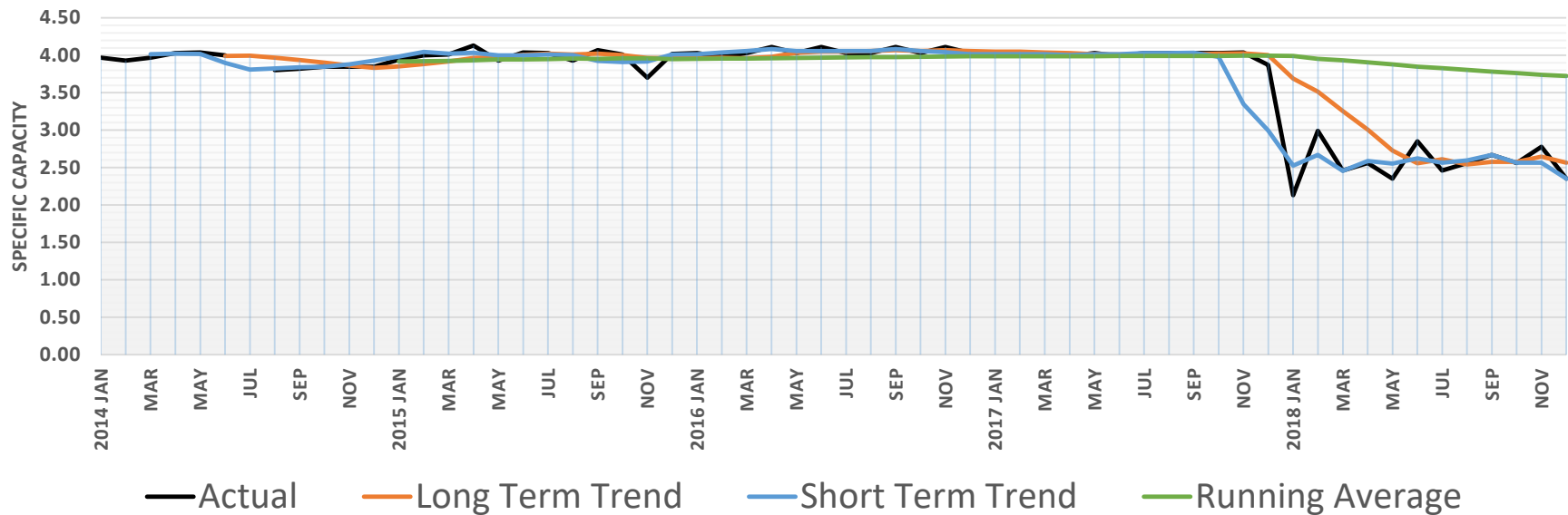
Chart
Specific
Capacity

Visually
Monitor Pump
Performance

Predict pump
problems

Budget for
well servicing

Grandwood Park Well #12 - Specific Capacity - Moving Average





Building on success

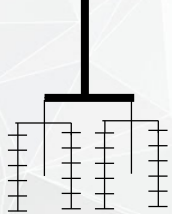
Executing the plan

Always Improving

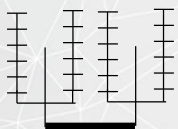


Backup slides

Who and what we are



Happy
Customer!



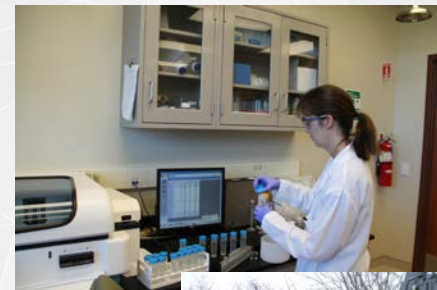
12 Water Systems

- 38 wells
- 8 water towers
- 10 reservoirs
- CLCJAWA Water
- 292 miles of water main
- 3,740 fire hydrants

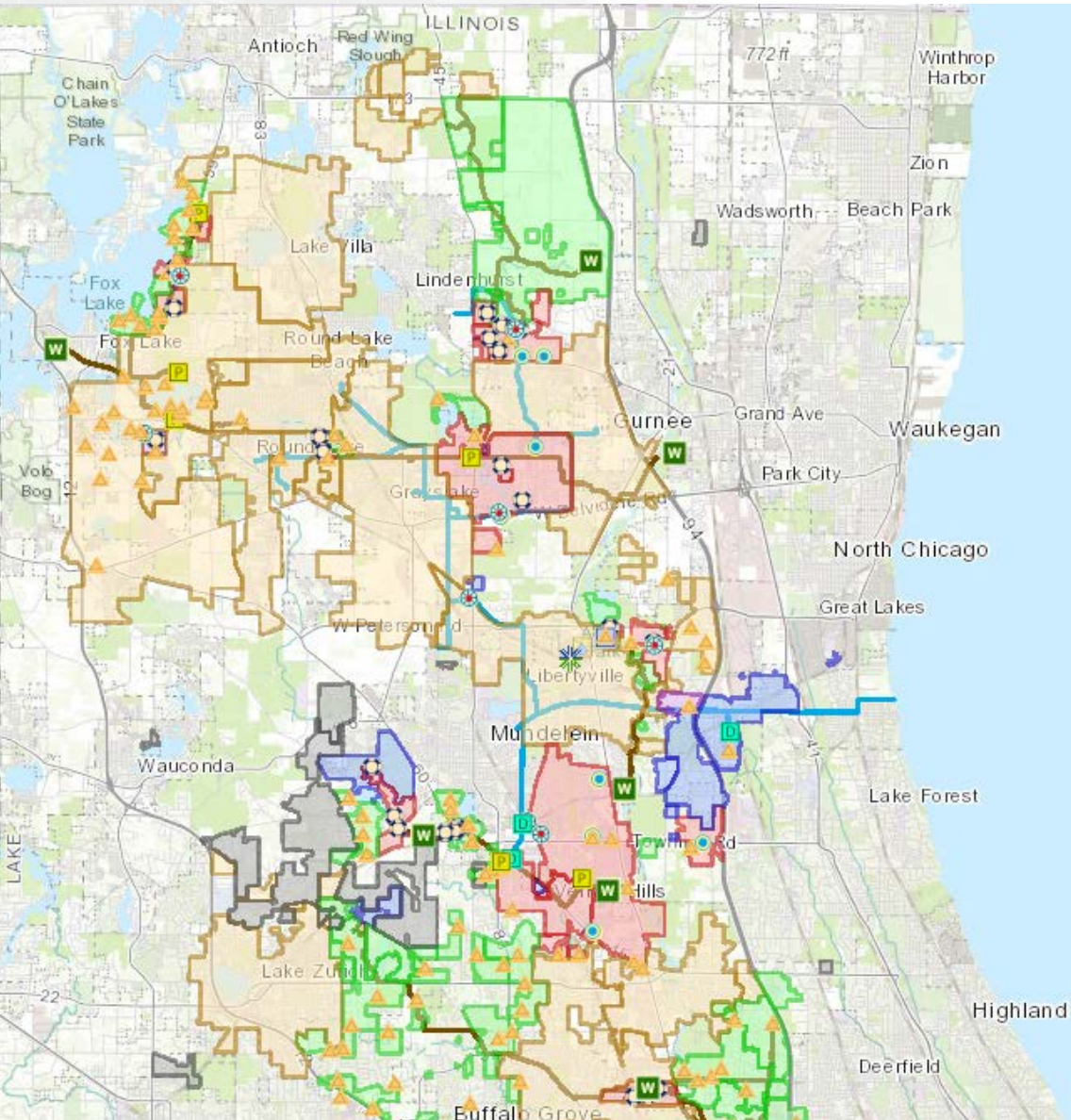
7 Sanitary Sewer Systems

- 368 miles of sewer pipe
- 66 lift stations
- 5 regional interceptors
- 3 Treatment Facilities

96 Employees



Who we serve



A network of service providers

19 Support Agreements

300,000 Wholesale Customers

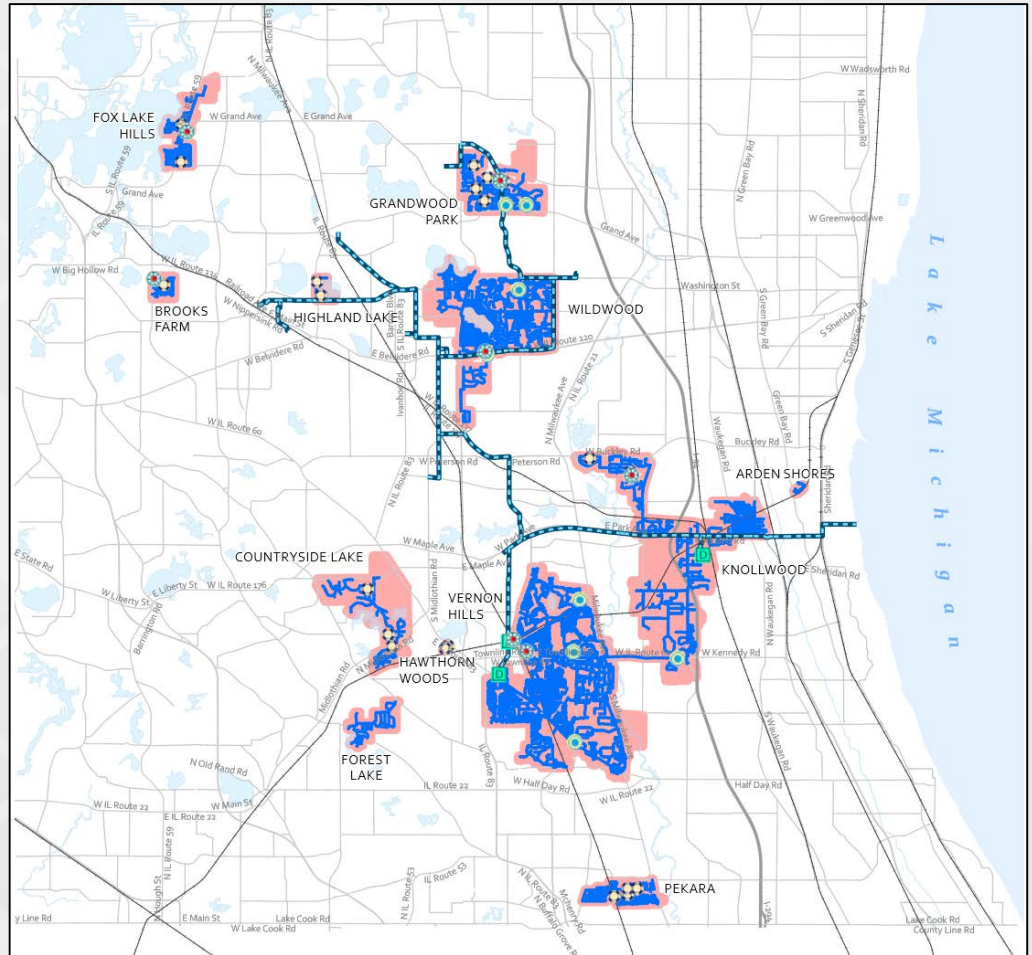
27,000 + 6,000 (LRSD) Customers

40% of the County's population

Water Systems

12 Water Systems

- 38 wells
- 8 water towers
- 10 reservoirs
- 292 miles of water main
- 3,740 fire hydrants



Sanitary Sewer Systems

7 Sanitary Sewer Systems

- **368 miles of sewer pipe**
- **66 lift stations**
- **5 regional interceptors**

3 Treatment Facilities

