

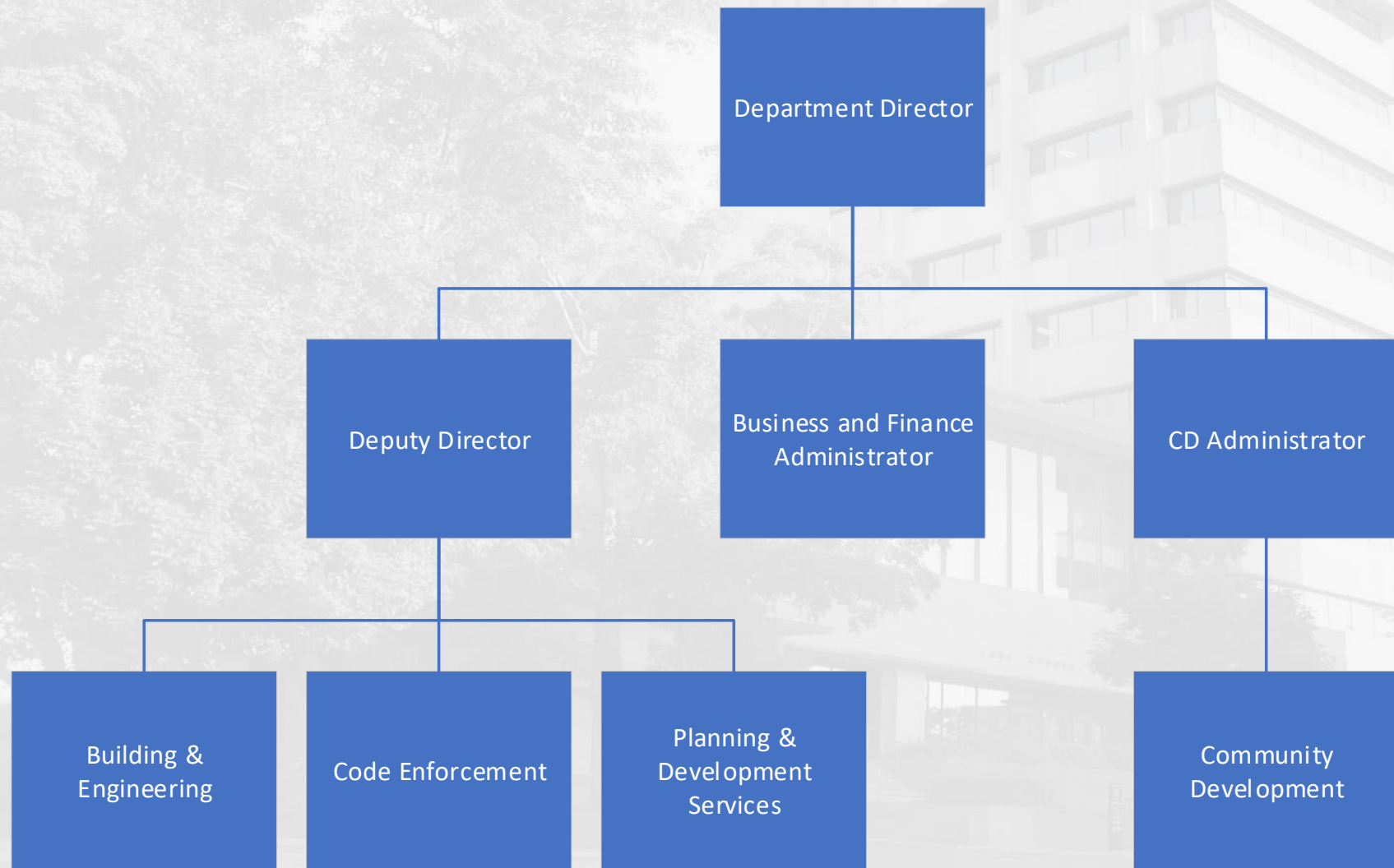


LAKE COUNTY  
Investing in People  
and Our Communities

Planning, Building &  
Development Dept.

January 30, 2019

# OUR DEPARTMENT



# SERVICE AREAS

- Project managers for integrated permitting process in unincorporated Lake County
- Enforcement of code compliance in unincorporated Lake County
  - Nuisance Ordinance
  - Unified Development Ordinance
- Management of Administrative Adjudication
- Intergovernmental Agreements for review and inspection services
- Land use planning and involvement in the County's sustainability efforts

# OUR COMMITTEE ITEMS

- Plat Actions
- Subdivisions
- Rezoning
- Conditional Use Permits
- Planned Unit Developments
- Ordinance amendments/revisions
- Intergovernmental Agreements
- Fast-track Demolitions



# A CLOSER LOOK AT KEY OPERATIONS

1. Integrated Permitting  
*(January 30 Committee)*
2. Code Enforcement  
*(February 6 Committee)*
3. Intergovernmental Agreements and Operational Efficiencies  
*(February 27 Committee)*



# KEY OPERATION: INTEGRATED PERMITTING

# INTEGRATED PERMITTING

## Timeline

**Pre-2008**  
“Siloed”  
County  
Depts.

**2008**

Horizon Centre hired  
[“Integrate process and  
people”]

**2010**

Integrated Permitting &  
CPF Opens

**2014**

Horizon Centre completes  
Phase 2 review  
[“Integrate technology”]

**2017**

New  
Permitting  
Software  
System

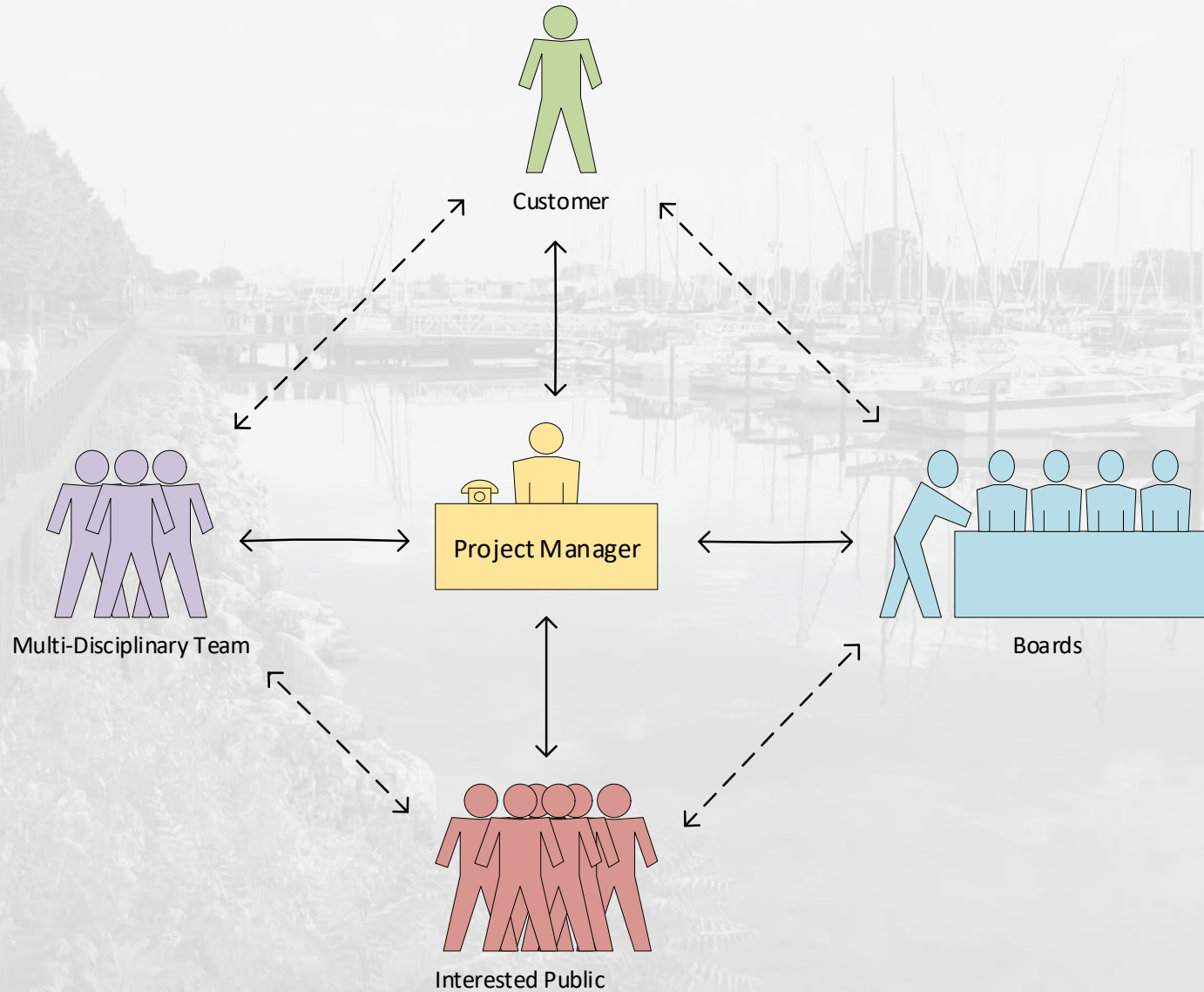


# INTEGRATED PERMITTING

- “Customer sits in one chair” philosophy
- Project-based permitting
  - Classified based on complexity (Types A, B, C, D)
  - Counter Based vs. Submittal Based
- Coordinate review and approvals for all land departments
- “Options Thinking” approach



# INTEGRATED PERMITTING



# TOOLS FOR SUCCESS



The background image is a faded, grayscale photograph. It depicts a modern, multi-story building with a grid-like facade of windows and balconies. In the foreground, on the right side, is a large, dark statue of Abraham Lincoln, shown from the chest up, facing left. The statue is mounted on a tiered, rectangular pedestal. The overall image has a light, almost white, tint, making the text stand out prominently.

QUESTIONS?