

SURVEY PREPARED FOR

DRH CAMBRIDGE HOMES INC.
800 S. MILWAUKEE AVENUE, SUITE 250
LIBERTYVILLE, ILLINOIS 60048

OWNER/DEVELOPER

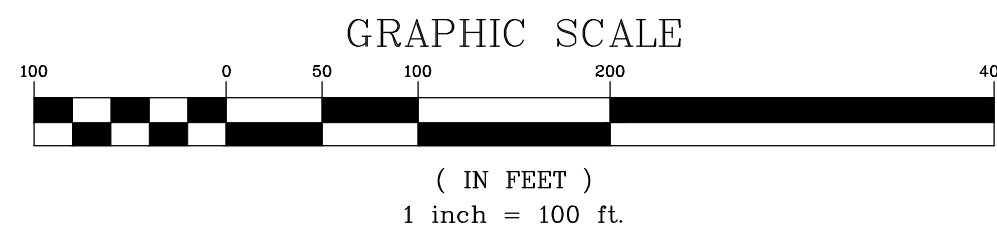
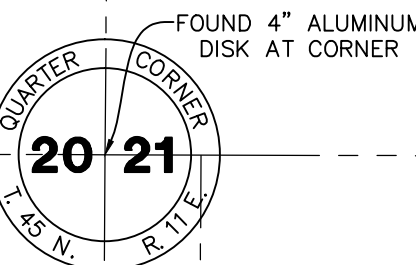
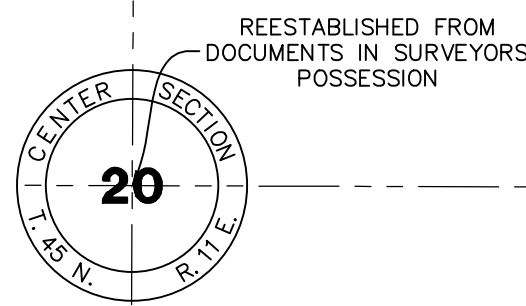
DRH CAMBRIDGE HOMES INC.
800 S. MILWAUKEE AVENUE, SUITE 250
LIBERTYVILLE, ILLINOIS 60048

VISTA RIDGE SUBDIVISION
CONVENTIONAL SINGLE-FAMILY RESIDENTIAL SUBDIVISION

OF

THE SOUTH 7/8'S OF THE SOUTHEAST QUARTER OF THE SOUTHEAST QUARTER OF SECTION 20,
TOWNSHIP 45 NORTH, RANGE 11 EAST OF THE THIRD PRINCIPAL MERIDIAN, IN LAKE COUNTY, ILLINOIS

CURRENT P.I.N.:
07-20-400-008



BASIS OF BEARINGS

BEARINGS ARE BASED UPON THE ILLINOIS STATE PLANE COORDINATE SYSTEM OF 1983, EAST ZONE, ADJUSTED TO GROUND VALUES, AS ESTABLISHED BY REAL TIME KINEMATIC (RTK) GPS METHODS

SITE SUMMARY

LOTS 1-65 : 656,409 SQ. FT. (15.069 ACRES ±)
OUTLOTS 100 & 101: 626,314 SQ. FT. (14.378 ACRES ±)
DEDICATED R.O.W.: 216,313 SQ. FT. (4.966 ACRES ±)
TOTAL: 1,499,036 SQ. FT. (34.413 ACRES ±)

LEGEND

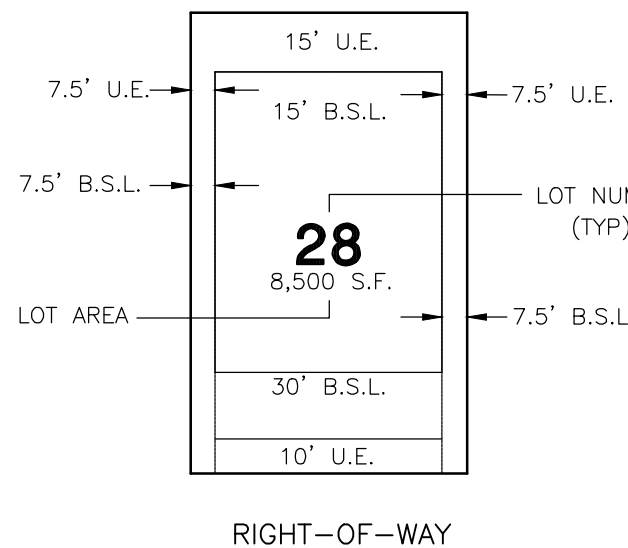
PROPERTY LINE
LOT LINE
EASEMENT LINE
SETBACK LINE
B.S.L. BUILDING SETBACK LINE
T.Y.S. TRANSITION YARD SETBACK
U.E. UTILITY EASEMENT
(XXX.XX) RECORD INFORMATION
XXX.XX MEASURED INFORMATION

SHEET INDEX

SHEET 1 OF 4 BOUNDARY, OVERALL DEVELOPMENT LAYOUT, LOT DETAIL AND SETBACK INFORMATION.
SHEET 2 & 3 OF 4 LOT DETAIL, SETBACK INFORMATION EASEMENTS, RIGHT-OF-WAYS AND OUTLOTS.
SHEET 4 OF 4 LEGAL DESCRIPTION, CERTIFICATES AND PROVISION LANGUAGE.

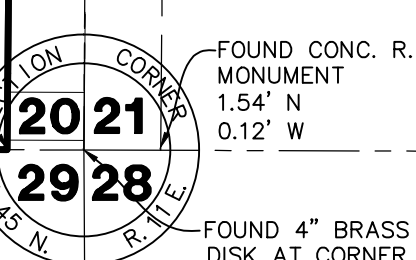
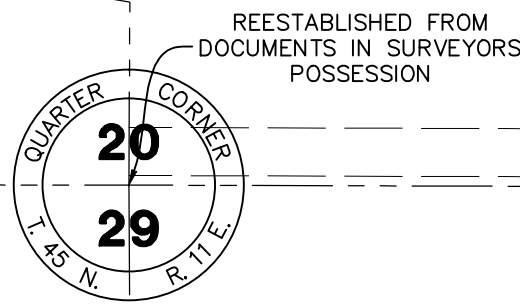
TYPICAL LOT DETAIL: LOTS 1-65
(UNLESS SHOWN OTHERWISE)

*COMBINED SIDE YARDS ARE 15' MINIMUM



SURVEYOR'S NOTES

- ALL DIMENSIONS ARE SHOWN IN FEET AND DECIMAL PARTS THEREOF.
- DIMENSIONS ALONG CURVED LINES ARE ARC LENGTHS.
- NO DIMENSION SHALL BE ASSUMED BY SCALE MEASUREMENT HEREON.
- THERE MAY BE ADDITIONAL TERMS, POWERS, PROVISIONS AND LIMITATIONS CONTAINED IN AN ABSTRACT DEED, LOCAL ORDINANCES, DEEDS, TRUSTS, COVENANTS OR OTHER INSTRUMENTS OF RECORD.
- DENOTES CONCRETE MONUMENTS.
- IN ACCORDANCE WITH CHAPTER 765 ILCS SECTION 205/1 5/8"X 24" LONG IRON RODS WILL BE SET AT ALL LOT CORNERS AND POINTS OF GEOMETRIC CHANGE UNLESS SHOWN OTHERWISE.
- THERE SHALL BE NO DIRECT ACCESS TO HUNT CLUB ROAD (C.H. 29) FROM OUTLOT 101.
- ALL ROADWAYS DEDICATED BY THIS PLAT ARE DEDICATED TO BOTH WARREN TOWNSHIP AND LAKE COUNTY.



DATE	REVISIONS	BY	DATE
9/15/16	ISSUED FOR RECORDING	SJP	9/15/16
08-25-16	REVISED PER VILLAGE COMMENTS	SJP	8/21/16
08-01-16	REVISED PER CLIENT REVIEW	SJP	8/21/16
07-25-16	REVISED PER VILLAGE COMMENTS	SJP	7/21/16

Manhard CONSULTING LTD.
200 Burlington, Suite 200, Burlington, IL 60010
708.666.6666
www.manhardconsulting.com
Civil Engineers • Surveyors • Wetland Engineers • Wetland Scientists • Planners
Construction Managers • Environmental Scientists • Landscape Architects

VISTA RIDGE SUBDIVISION
LAKE COUNTY, ILLINOIS
FINAL PLAT OF SUBDIVISION

PROJ. MGR.: JDA
PROJ. ASSOC.: SJP
DRAWN BY: CNB
DATE: 06-20-16
SCALE: 1"=100'
SHEET
1 OF 4
DRH.LC101

SURVEY PREPARED FOR

DRH CAMBRIDGE HOMES INC.
800 S. MILWAUKEE AVENUE, SUITE 250
LIBERTYVILLE, ILLINOIS 60048

OWNER/DEVELOPER

DRH CAMBRIDGE HOMES INC.
800 S. MILWAUKEE AVENUE, SUITE 250
LIBERTYVILLE, ILLINOIS 60048

VISTA RIDGE SUBDIVISION
CONVENTIONAL SINGLE-FAMILY RESIDENTIAL SUBDIVISION

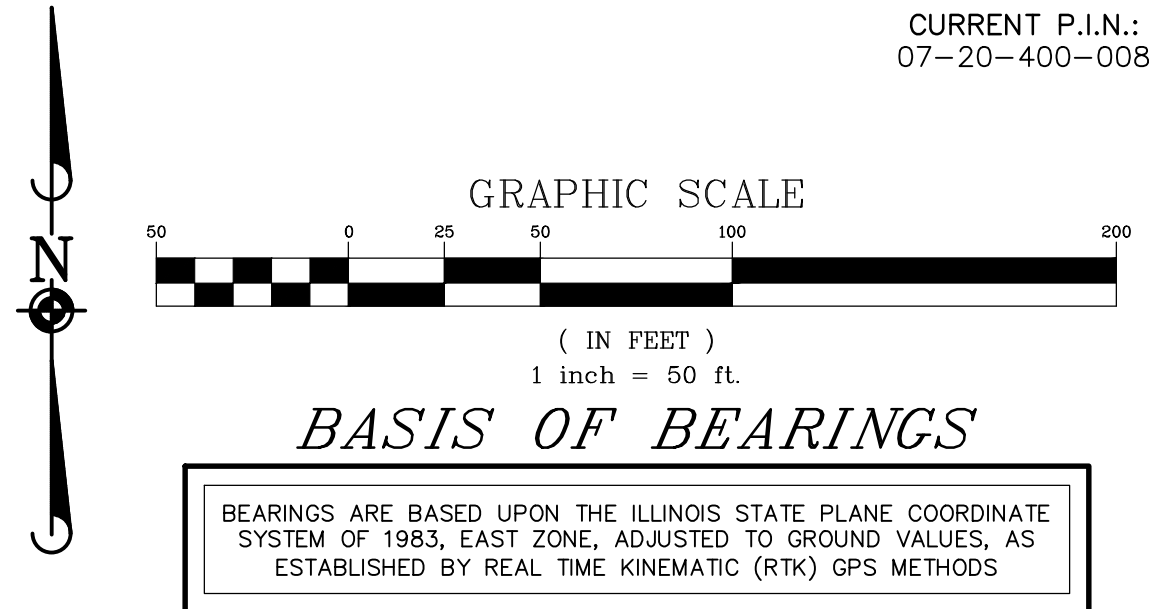
OF

THE SOUTH 1/4 OF THE SOUTHEAST QUARTER OF THE SOUTHEAST QUARTER OF SECTION 20,
TOWNSHIP 45 NORTH, RANGE 11 EAST OF THE THIRD PRINCIPAL MERIDIAN, IN LAKE COUNTY, ILLINOIS

CURRENT P.I.N.:
07-20-400-008

LINE TABLE		
LINE	BEARING	LENGTH
L1	N02°17'14"W	115.74'
L2	N01°43'19"E	59.59'
L3	N25°16'54"W	6.37'
L4	N51°11'18"E	42.26'
L5	N58°58'46"W	15.77'
L6	N39°54'42"W	26.49'
L7	S34°56'47"E	16.51'

CURVE TABLE				
CURVE	RADIUS	LENGTH	CHORD BEARING	CHORD
C1	16.20'	25.14'	N80°28'54"W	22.70'
C2	15.20'	20.29'	N12°57'12"E	18.81'
C3	8.80'	7.84'	N25°40'43"E	7.58'



Manhard
CONSULTING LTD.
200 Berwyn Place, Suite 200, Berwyn, IL 60404
708.399.1100
www.manhardconsulting.com
Civil Engineer • Surveyor • Water Resources Engineer • Wetland Specialist • Environmental Scientists • Planners

VISTA RIDGE SUBDIVISION
LAKE COUNTY, ILLINOIS
FINAL PLAT OF SUBDIVISION

PROJ. MGR.: JDA
PROJ. ASSOC.: SJP
DRAWN BY: CNB
DATE: 06-20-16
SCALE: 1"=50'
SHEET
2 OF 4
DRH.LC101

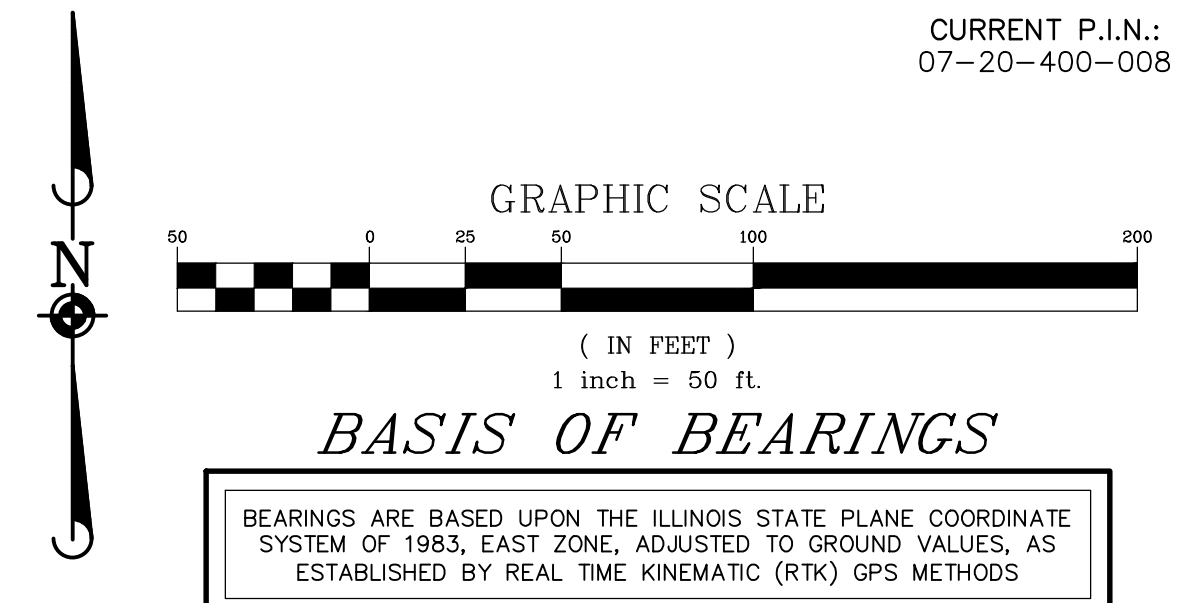
DRH CAMBRIDGE HOMES INC.
800 S. MILWAUKEE AVENUE, SUITE 250
LIBERTYVILLE, ILLINOIS 60048

DRH CAMBRIDGE HOMES INC.
800 S. MILWAUKEE AVENUE, SUITE 250
LIBERTYVILLE, ILLINOIS 60048

OF

THE SOUTH $\frac{7}{8}$ 'S OF THE SOUTHEAST QUARTER OF THE SOUTHEAST QUARTER OF SECTION 20,
TOWNSHIP 45 NORTH, RANGE 11 EAST OF THE THIRD PRINCIPAL MERIDIAN, IN LAKE COUNTY, ILLINOIS

CURRENT P.I.N.:
07-20-400-008



Manhard
CONSULTING LTD.

7729 Springs Drive, Louisville, KY 40263-9930 • 502.969.9930 • www.manhard.com
Civil Engineers • Surveyors • Water Resource Engineers • Water & Wastewater Engineers
Construction Managers • Environmental Scientists • Landscape Architects • Planners

VISTA RIDGE SUBDIVISION
LAKE COUNTY, ILLINOIS
FINAL PLAT OF SUBDIVISION

PROJ. MGR.: JDA
 PROJ. ASSOC.: SJP
 DRAWN BY: CNB
 DATE: 06-20-16
 SCALE: 1"=50'

SHEET
3 OF **4**
 DRH.LCIL01

