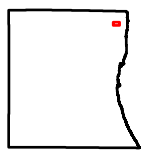
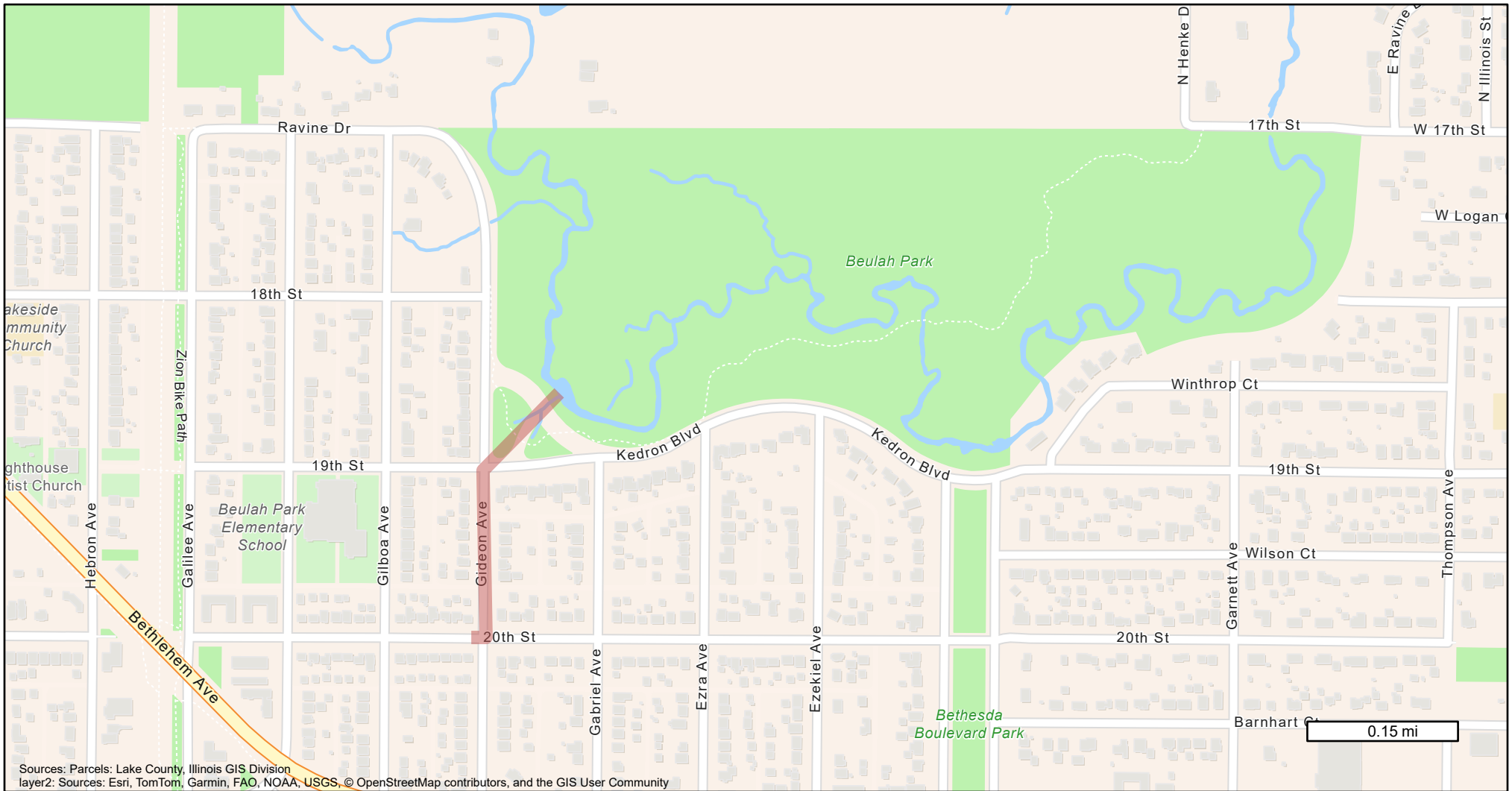


Location Map - 20th Street Stormwater Improvements Phase 1



Lake County, Illinois



Map Printed on 6/3/2024



Disclaimer:

The selected feature may not occur anywhere in the current map extent. A Registered Land Surveyor should be consulted to determine the precise location of property boundaries on the ground. This map does not constitute a regulatory determination and is not a base for engineering design. This map is intended to be viewed and printed in color.