



Available and Future Funding Opportunities

**County Administrator's Office
February 3, 2023**

Summary

- **2023 NACo Legislative Conference**
- **Funding opportunities**
 - **Federal**
 - **BEAD**
 - **ACP**
 - **Digital Equity Act**
 - **State**
 - **Connect Illinois**

2023 NACo Legislative Conf.



- **NACo Broadband Summit on Local Coordination and Digital Equity**
 - **Date: Monday February 13, 2023**
 - **Time: 2:30 pm to 4:30 pm**
 - **Location: Columbia 6 & 8, Terrace Level**
 - **Federal and state partners gather to discuss role of counties in broadband deployment and digital equity**

- **Preparing for the Broadband Summit – Materials**
 - **Summary of Summit**
 - **Status of Special Committee on Broadband**
 - **Lake County broadband access statistics**
 - **Unserved and underserved**

Broadband Equity, Access and Deployment ("BEAD") Program



- **\$42.45B from IIJA to nationally expand broadband**
- **State will receive funds and disburse to subgrantees, which include:**
 - **Traditional ISPs**
 - **Nonprofits**
 - **Public-private partnerships**
 - **Public or private utilities or utility districts**
 - **Tribal entities**
 - **Local government**

BEAD Program



- **Subgrantees required to match at least 25% of any funds**
- **Matching funds can come from multiple sources.**
- **Federal funds cannot be used for local match, except for:**
 - **ARPA funds**
 - **CARES Act funds**
 - **Families First Coronavirus Response Act funds**
 - **Consolidated Appropriations Act funds**
 - **Funds from Federal Regional Commission**

BEAD Program



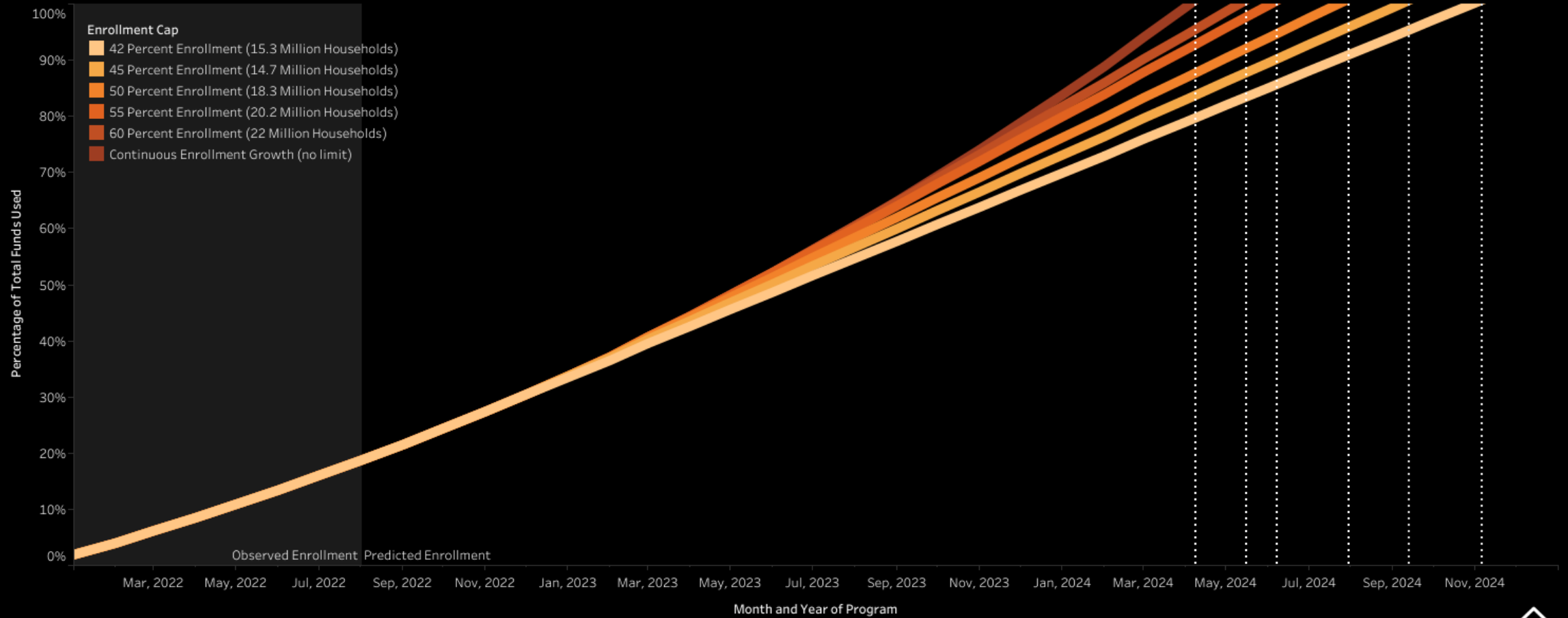
- **Possibility match requirements may be increased based on state's plan**
- **Subgrantees encouraged to provide higher than the required match**

Affordability Connectivity Program ("ACP")



- **\$14.2B allocated for eligible households**
 - **\$30 monthly credit for internet**
 - **\$100 for an internet enabled device**
- **No plan for funding past initial \$14.2B funding**
- **34.3% eligible households in IL enrolled**
- **41.6% eligible households enrolled nationally**

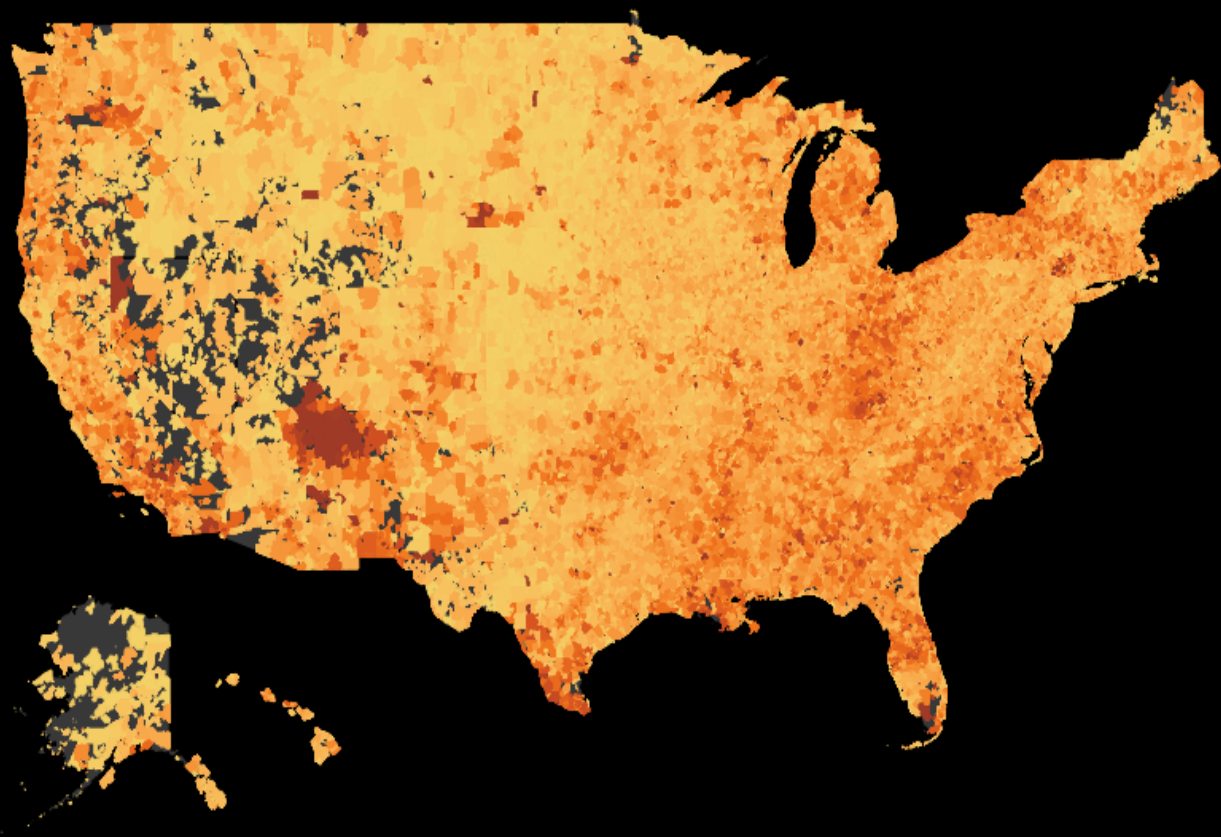
How Long Will Funding Last?



<http://acpdashboard.com>



ACP Enrollment



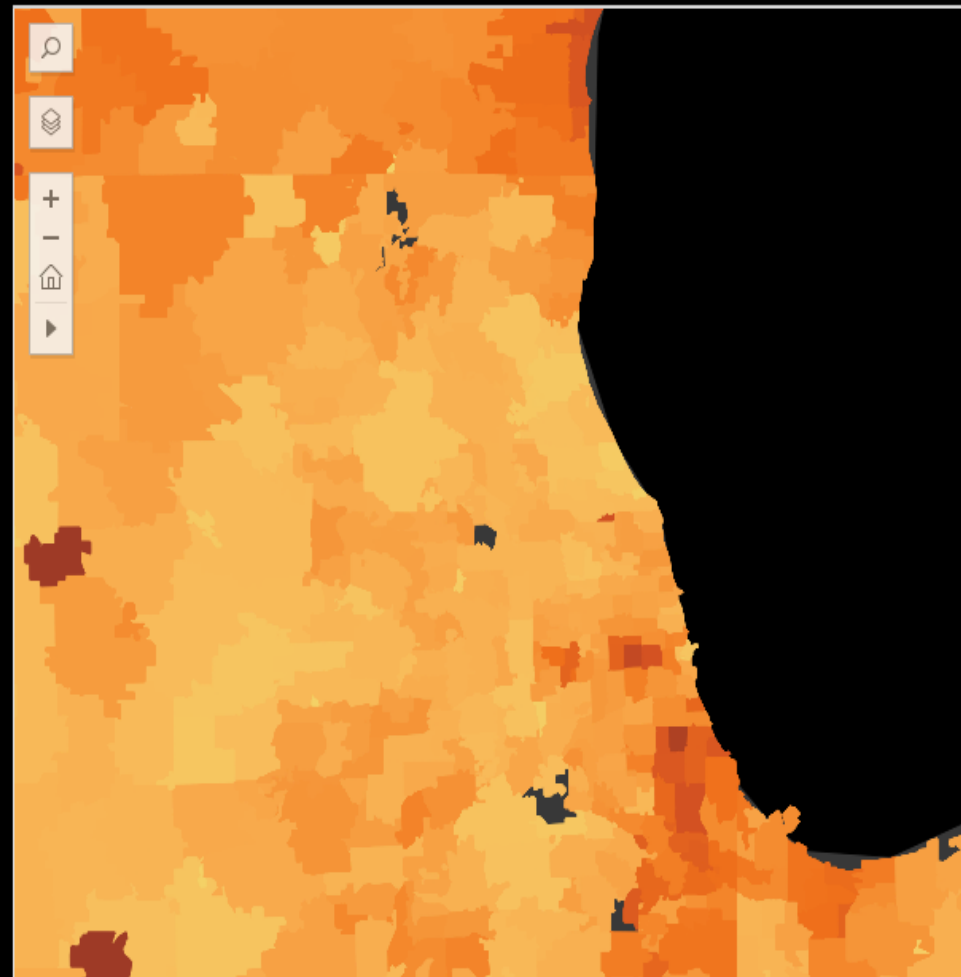
Percentage of Eligible Households Enrolled

0.0% 101.0%

In some cases, the data showed the percentage of households enrolled was over 100% for some zipcodes. This was the case for multi-dwelling units like affordable housing complexes, for example. Wherever a zipcode was listed as having more than 100% enrollment, the percentage has been adjusted to 101%.

Search for a Zip Code

Hover over the top left corner of this map to access the search feature and zoom into a particular zip code.



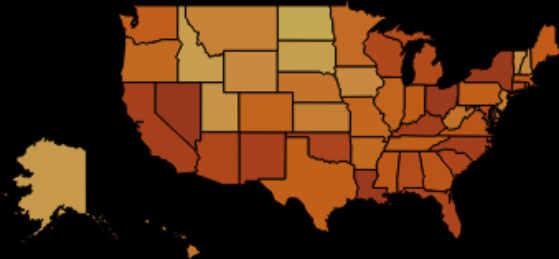
Affordable Connectivity Program

Last updated: 12/19/2022

Dashboard created by the Institute for Local Self-Reliance

Enrollment by State

Percentage of Eligible Households Enrolled
11.8% 62.9%



See Enrollment by State

See Enrollment by Zip Code

15 of 37 Million

Households Currently Enrolled of Eligible

41.6 Percent

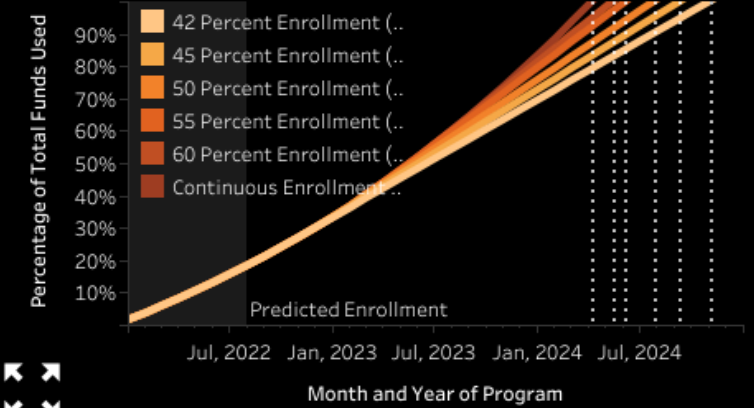
Eligible Households Enrolled Nationwide



\$12.0 Billion

Funds Remaining

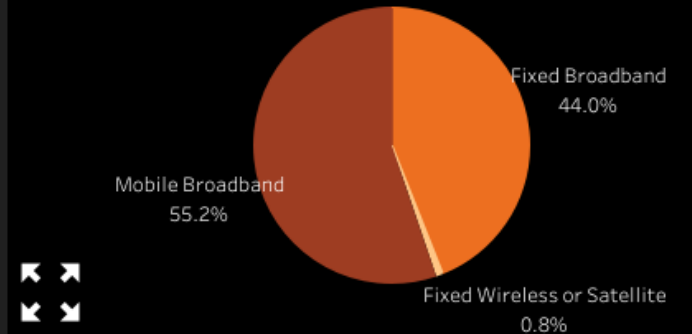
When Will Funding Run Out?



\$469 Million

Spent Each Month

Subscribers by Service Type

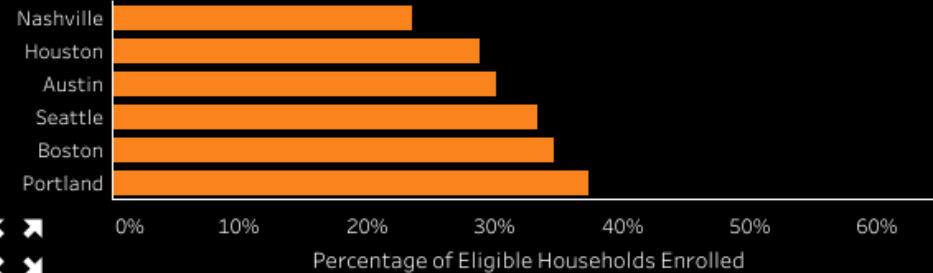


Metro-Area Enrollment

Highest



Lowest



Digital Equity Inclusion Act



- **Three Opportunities**

- 1. State Planning Grant (\$60M) –States only**

- **Develop state digital equity plan (Current Opportunity)**

- 2. State Capacity Grant (\$1.44B)—States only**

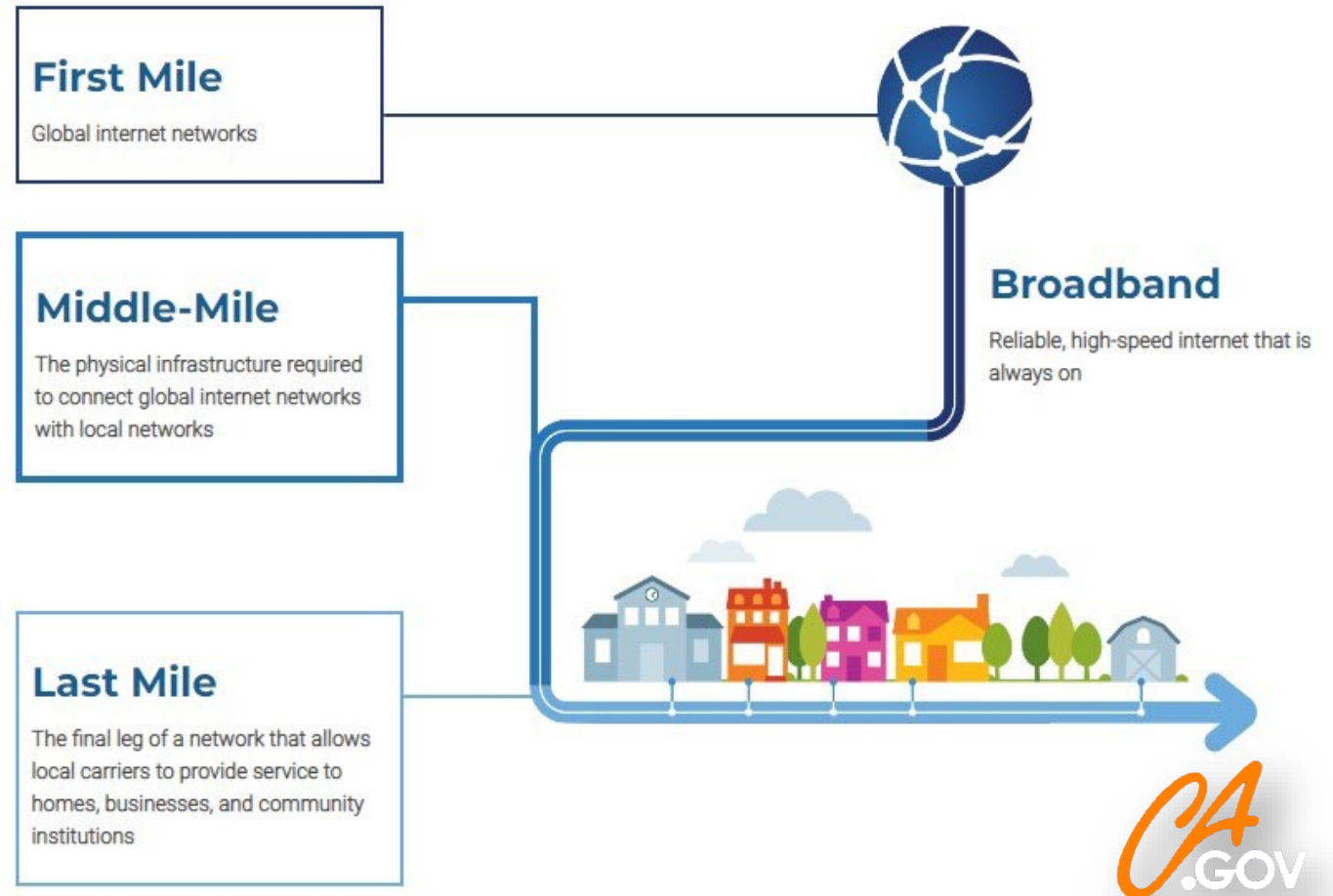
- **Carry out state digital equity plan**

3. Competitive Program (\$1.25B)

- Open to certain entities, including:
 - Political subdivisions
 - Nonprofits
 - Community anchor institutions
- Program will open 30 days after the date the initial state capacity grants are disbursed (unknown date)

Connect Illinois

- \$400M, up to \$10M per project
- Purpose: capital investments for the cost of deploying middle mile and last mile infrastructure
- Ongoing maintenance not eligible for grants
- Projects must be completed in 3 years



<https://site-cammbi.hub.arcgis.com/pages/what-is-the-middle-mile>

- Applications are reviewed using a numeric system and will evaluate criteria:
 - Project impact
 - Nonstate match and demonstration of need
 - Affordability & adoption assistance
 - Project readiness
 - Project viability and sustainability
 - Community support
 - Open access, shared use, & business strategy

- **Matching Requirements:**
 - **Requires at least a 50/50 match (nonstate and state)**
 - **Higher nonstate match (55%+) = Greater number of Points**
 - **Match can be from multiple sources**
 - **Fedcelerator Framework**
 - **If utilizing federal funds for a portion of the nonstate match, the state may contribute up to one half of total project costs**

- Higher scores will be granted funds immediately
- Mid-high scores scores will be reviewed and granted quarterly based on:
 - Location
 - Project focus
 - Nonstate match
- Lower scores will not be funded

Discussion on Priorities



- **Discussion of priorities and vision**
 - **All residents in Lake County will be able to easily access, afford, and use broadband internet service of at least 100/20 Mbps.**
 - **All Lake County residents will be able to use convenient, affordable world-class broadband networks that enable us to survive and thrive in our communities and across the globe.**
- **Possible Names:**
 - **Lake County Broadband Link**
 - **Lake County Digital Connection**
 - **Lake County Broadband Growth Initiative**
 - **Lake County Digital Opportunity Initiative**



Questions