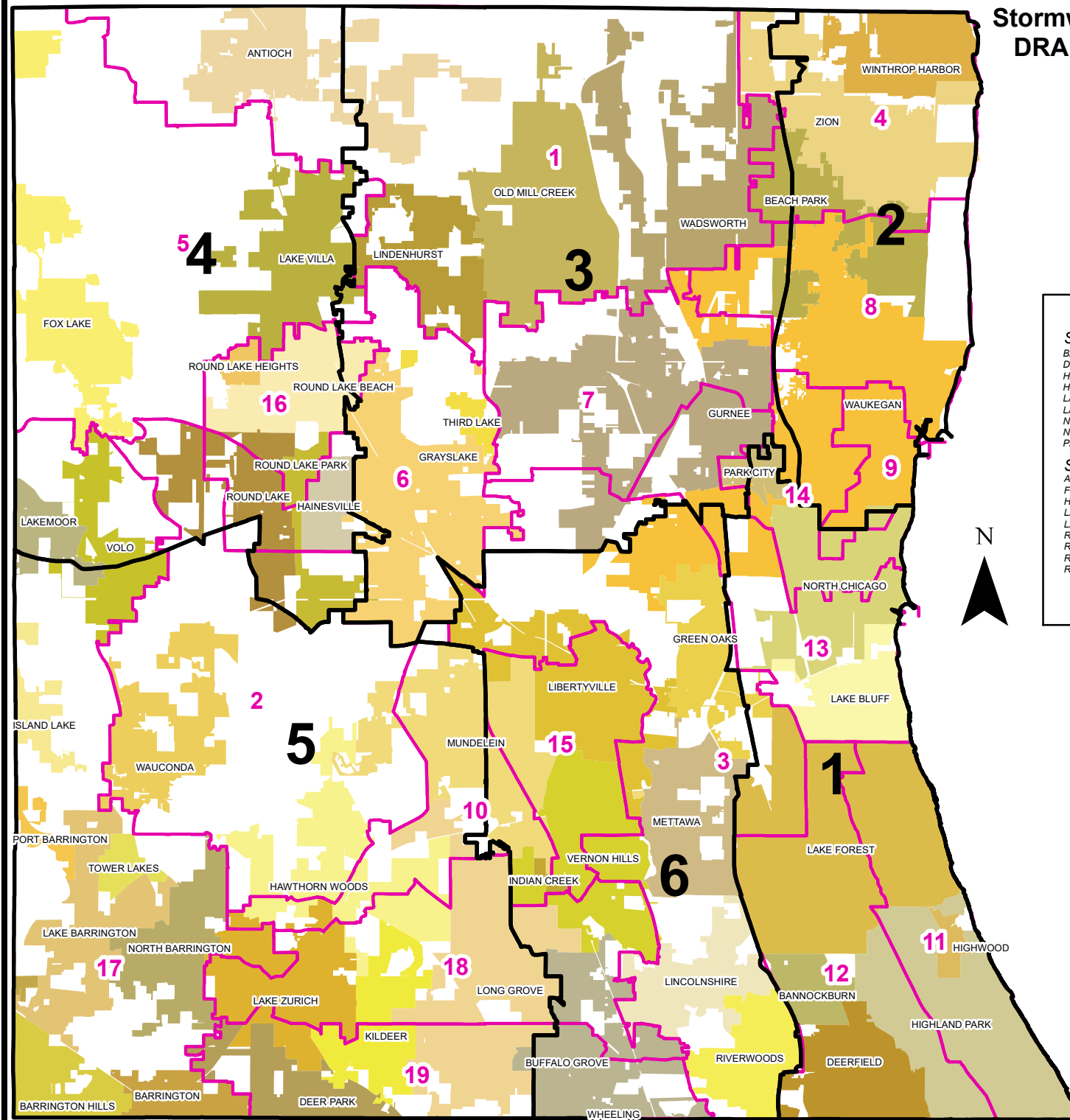


Stormwater Management Commission DRAFT 2022 Representation Areas



County Board Districts

SMC Dist 1	SMC Dist 2	SMC Dist 3
CB Dist 11	CB Dist 4	CB Dist 1
CB Dist 12	CB Dist 8	CB Dist 6
CB Dist 13	CB Dist 9	CB Dist 7
	CB Dist 14	
SMC Dist 4	SMC Dist 5	SMC Dist 6
CB Dist 5	CB Dist 2	CB Dist 3
CB Dist 16	CB Dist 10	CB Dist 15
	CB Dist 17	CB Dist 19
	CB Dist 18	



Municipalities

SMC Dist 1	SMC Dist 2	SMC Dist 3
BANNOCKBURN	BEACH PARK	GRAYSLAKE
DEERFIELD	WAUKEGAN	GURNEE
HIGHLAND PARK	WINTHROP HARBOR	LINDENHURST
HIGHWOOD	ZION	OLD MILL CREEK
LAKE BLUFF		THIRD LAKE
LAKE FOREST		WADSWORTH
NORTH CHICAGO		
NORTHBROOK		
PARK CITY		
SMC Dist 4	SMC Dist 5	SMC Dist 6
ANTIOCH	ARLINGTON HEIGHTS	BUFFALO GROVE
FOX LAKE	BARRINGTON	GREEN OAKS
HAINESVILLE	BARRINGTON HILLS	INDIAN CREEK
LAKE VILLA	DEER PARK	LIBERTYVILLE
LAKEMOOR	FOX RIVER GROVE	LINCOLNSHIRE
ROUND LAKE	HAWTHORN WOODS	METTAWA
ROUND LAKE BEACH	ISLAND LAKE	RIVERWOODS
ROUND LAKE HEIGHTS	KILDEER	VERNON HILLS
ROUND LAKE PARK	LAKE BARRINGTON	WHEELING
	LAKE ZURICH	
	LONG GROVE	
	MUNDELEIN	
	NORTH BARRINGTON	
	PALATINE	
	PORT BARRINGTON	
	TOWER LAKES	
	VOLO	
	WAUCONDA	

SMC Representation Area Population**

District	Population	Deviation
1	119,243	0.16%
2	118,835	-0.19%
3	118,537	-0.44%
4	119,315	0.22%
5	119,203	0.12%
6	119,209	0.13%

**2020 US Census

-  2022 DRAFT SMC Representation Areas
-  2022 County Board Districts



STORMWATER MANAGEMENT COMMISSION

Lake County Stormwater Management Commission Courtesy Map.
This map is provided for general locational information only. Map features have been derived from various sources, each of which has its own scale and accuracy. The locations of all features are approximate. This map should not be used to determine building set-backs or as a basis for purchasing property. Field Surveys and delineations are required to verify the exact locations of property lines and other map features.

*Lake County Stormwater Management Commission (LCSMC) DRAFT Representation Areas - April 28, 2022

DATA SOURCES: LCSMC and Lake County Department of Information And Technology, GIS & Mapping Division