

# ATTACHMENT A -2011 APPROVED- Stormwater Management Commission Representation Areas\*

## County Board Districts

SMC Dist 1	SMC Dist 2	SMC Dist 3
CB Dist 11	CB Dist 2	CB Dist 3
CB Dist 12	CB Dist 4	CB Dist 6
CB Dist 13	CB Dist 8	CB Dist 7
CB Dist 14	CB Dist 9	
SMC Dist 4	SMC Dist 5	SMC Dist 6
CB Dist 1	CB Dist 10	CB Dist 15
CB Dist 5	CB Dist 17	CB Dist 18
CB Dist 16	CB Dist 19	CB Dist 20
		CB Dist 21




## Municipalities

SMC Dist 1	SMC Dist 2	SMC Dist 3
DEERFIELD HIGHLAND PARK HIGHWOOD LAKE BLUFF LAKE FOREST NORTH CHICAGO PARK CITY	BEACH PARK WAUKEGAN WINTHROP HARBOR ZION	GRAYS LAKE GURNEE LINDENHURST OLD MILL CREEK PARK CITY THIRD LAKE WADSWORTH
SMC Dist 4	SMC Dist 5	SMC Dist 6
ANTIOCH FOX LAKE FOX LAKE HAINESVILLE LAKE VILLA ROUND LAKE ROUND LAKE BEACH ROUND LAKE HEIGHTS ROUND LAKE PARK	BARRINGTON BARRINGTON HILLS DEER PARK FOX RIVER GROVE HAWTHORN WOODS ISLAND LAKE KILDEER LAKE BARRINGTON LAKE ZURICH LAKEMOOR LONG GROVE MUNDELEIN NORTH BARRINGTON PORT BARRINGTON TOWER LAKES VOLO WAUCONDA	BANNOCKBURN BUFFALO GROVE GREEN OAKS INDIAN CREEK LIBERTYVILLE LINCOLNSHIRE METTAWA RIVERWOODS VERNON HILLS WHEELING

## SMC Representation Area Population\*\*

District	Population	Deviation
1	118073	0.71%
2	117539	0.25%
3	118066	0.70%
4	115314	-1.65%
5	116129	-0.95%
6	118341	0.94%

\*\*2010 US Census

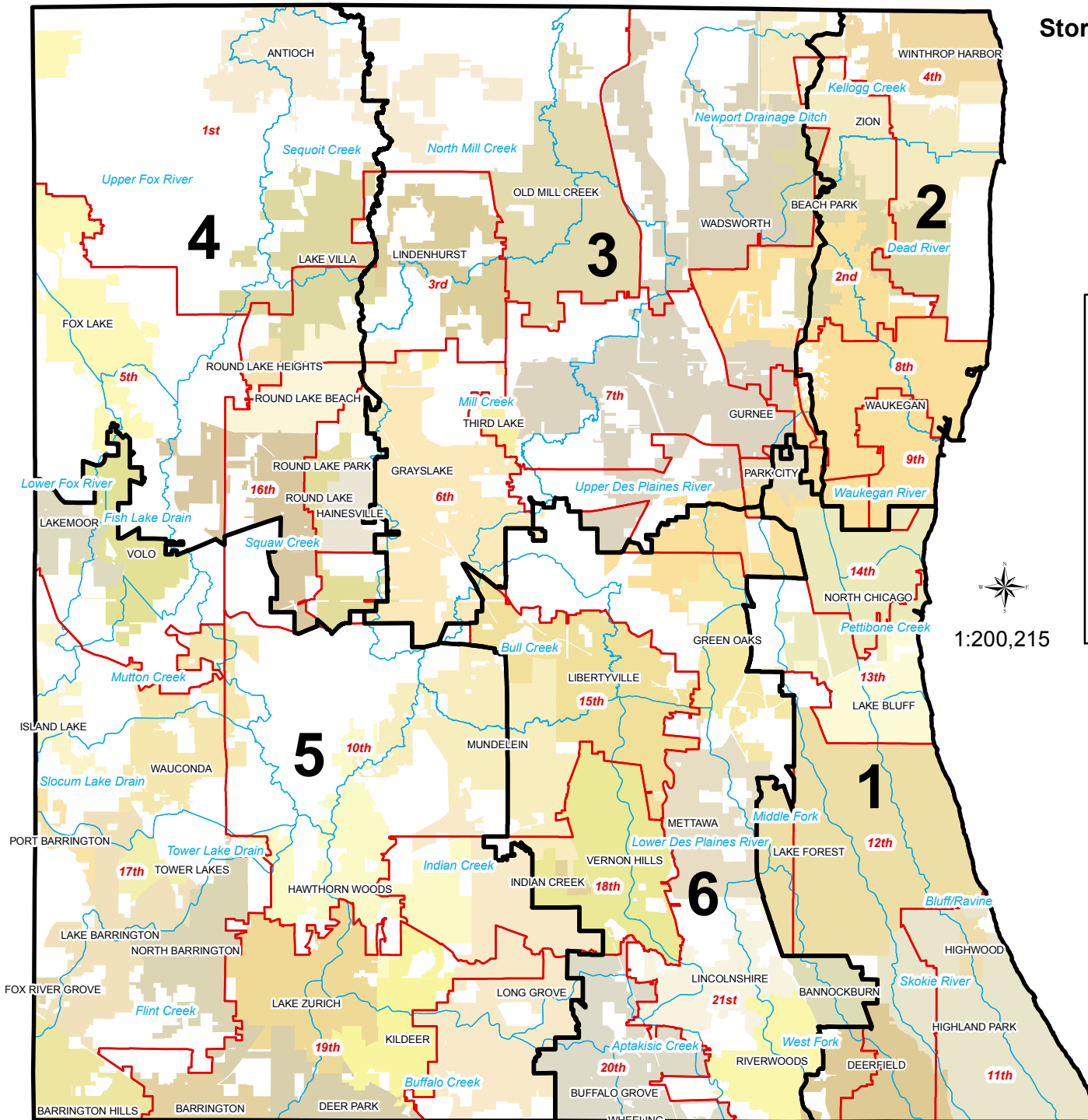
-  SMC Representation Area Boundary
-  County Board District Boundary
-  Sub-Watershed Boundary



STORMWATER MANAGEMENT COMMISSION  
Lake County Stormwater Management Commission Courtesy Map.  
This map is provided for general informational purposes only. Map features have been derived from various sources, each of which has its own scale and accuracy. The locations of all features are approximate. This map should not be used to determine building setbacks or as a basis for purchasing property. Field surveys and delineations are required to verify the exact locations of property lines and other map features.

\*Lake County Stormwater Management Commission (LCSMC) approved boundaries - December 1, 2011

DATA SOURCES: LCSMC and Lake County Department of Information And Technology, GIS & Mapping Division



Map Location U:\ADMINISTRATION\SMC\SMC Representation Districts\Maps