



Exhibit A

Figure 1 – Site Map

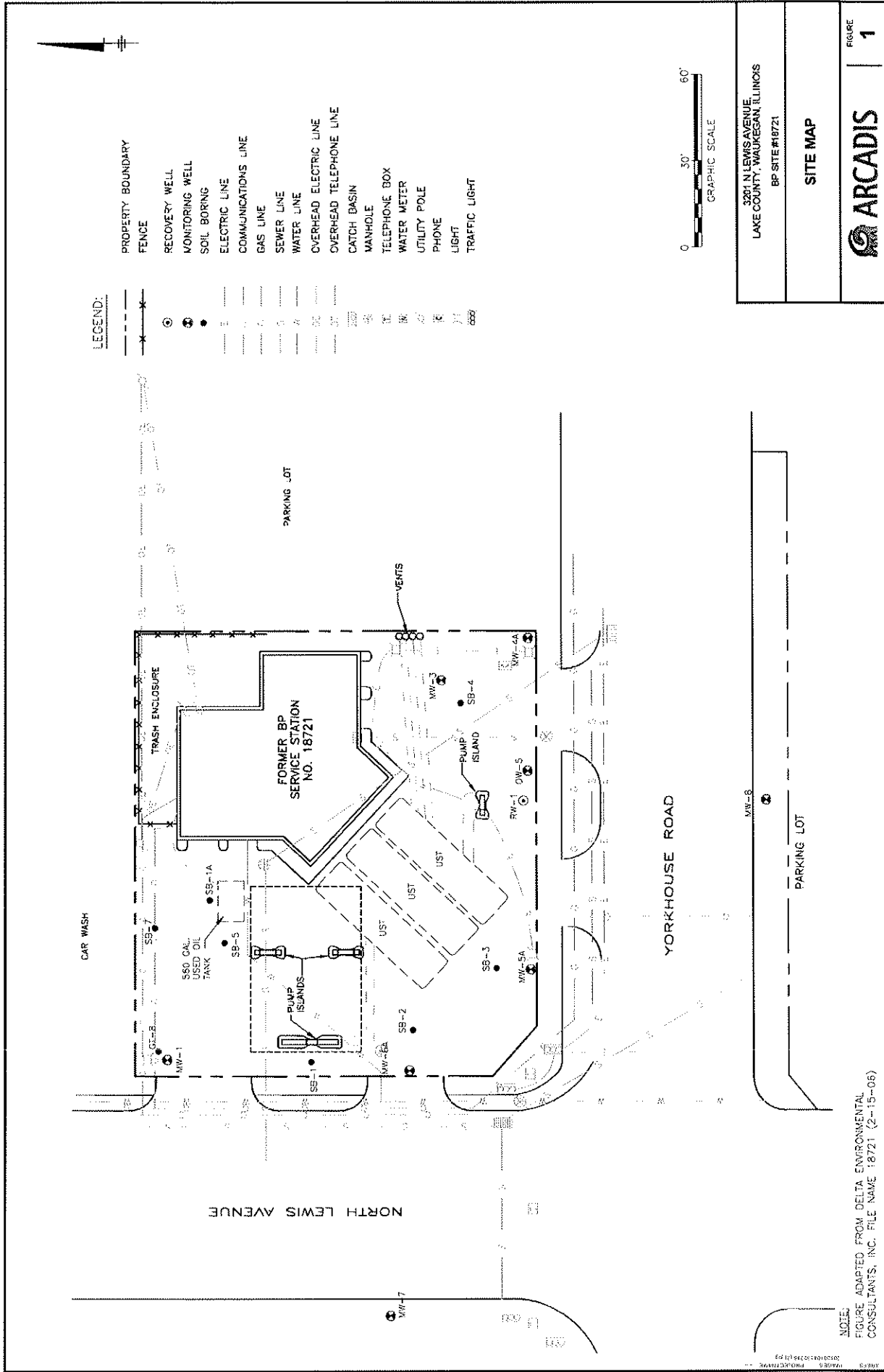
Figure 2 – Soil Quality Map

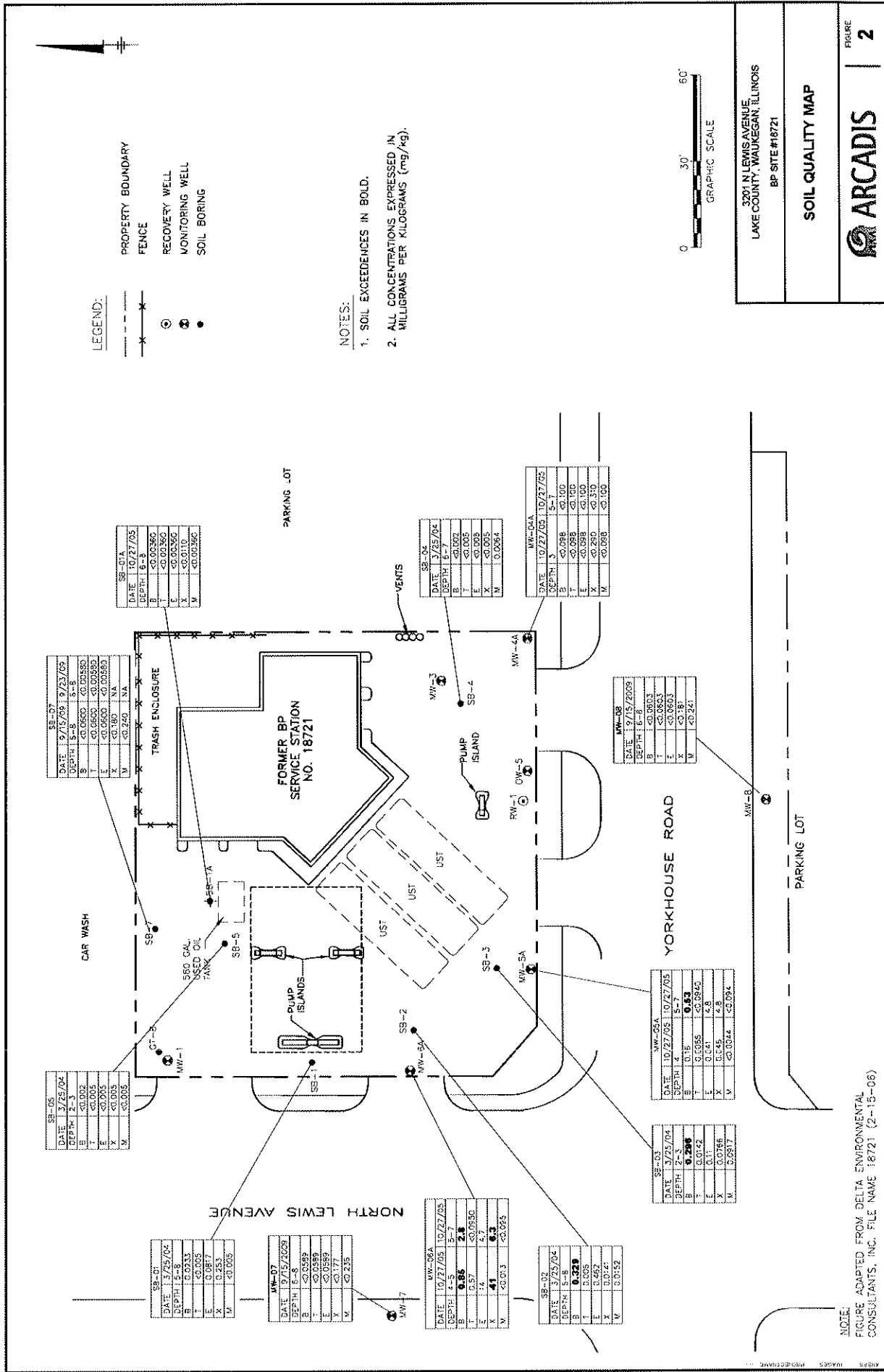
Figure 3 – Groundwater
Monitoring Map – December 8,
2011

Figure 4 – Benzene Plume for
the Soil Component of the
Groundwater Ingestion
Exposure Route

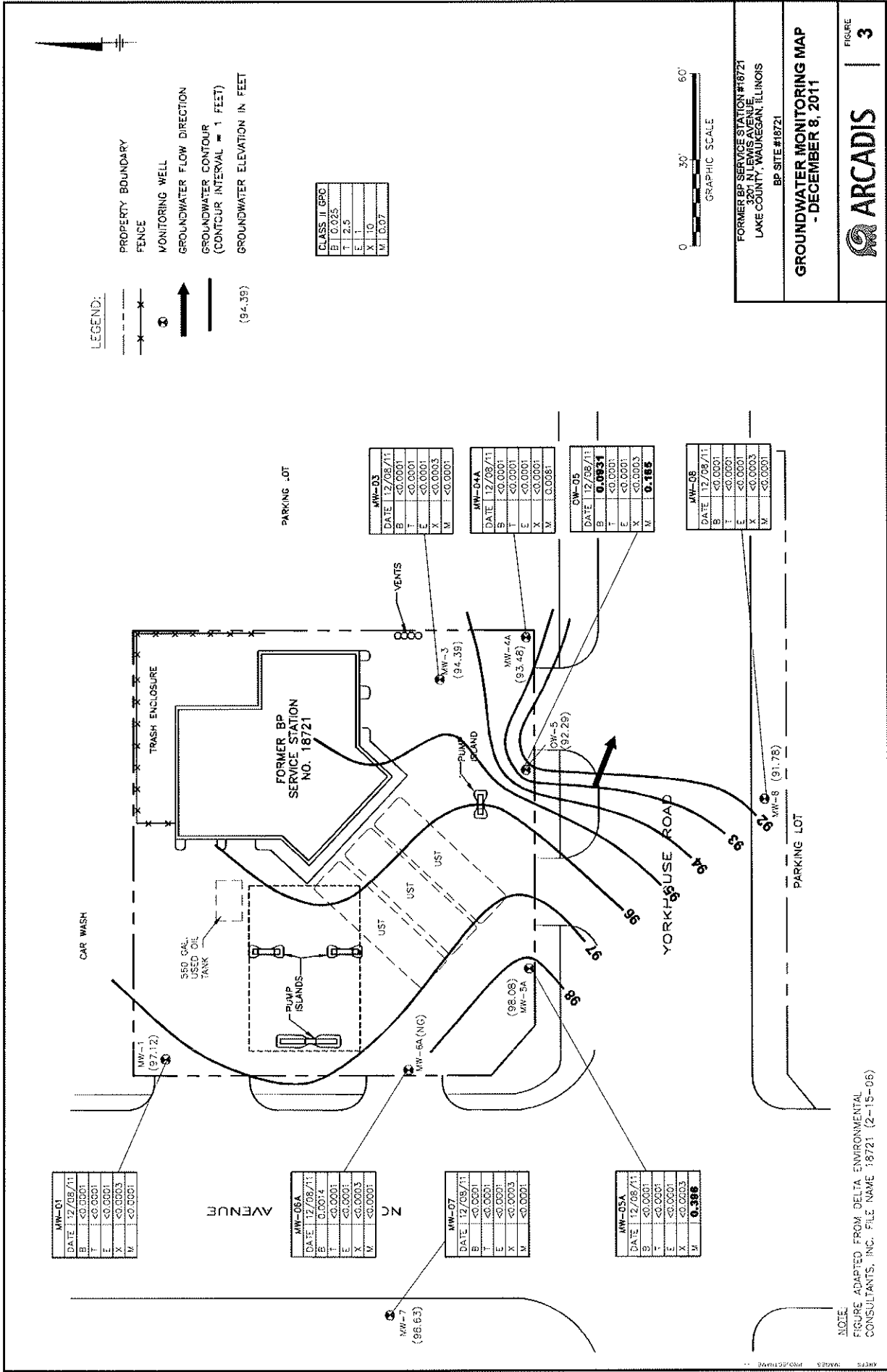
Figure 5 – MTBE Plume for the
Groundwater Ingestion
Exposure Route

Figure 6 – Lake County
Highway Authority Agreement
Map





NOTE:
FIGURE ADAPTED FROM DELTA ENVIRONMENTAL CONSULTANTS, INC. FILE NAME 18721 (2-15-06)

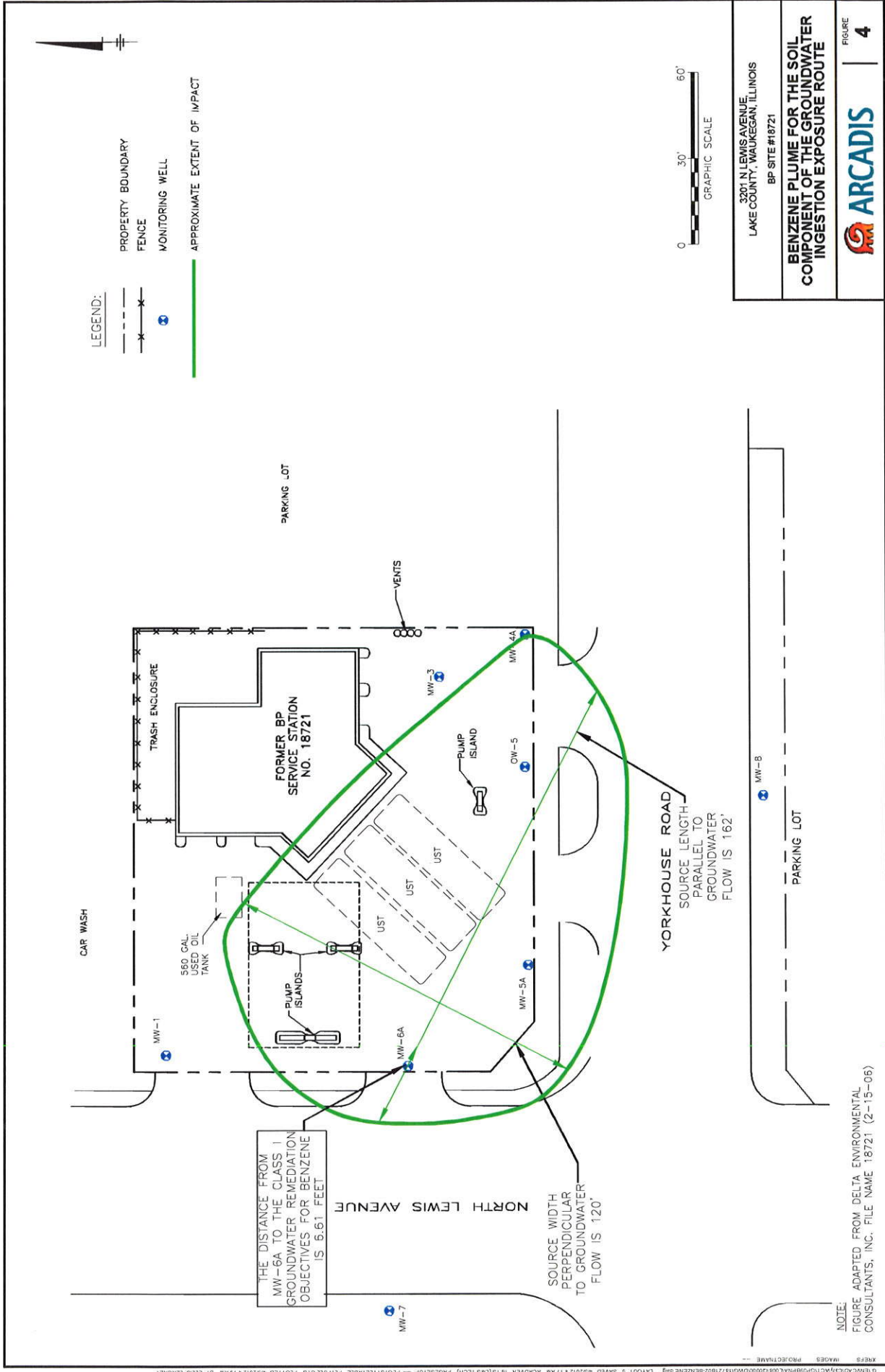


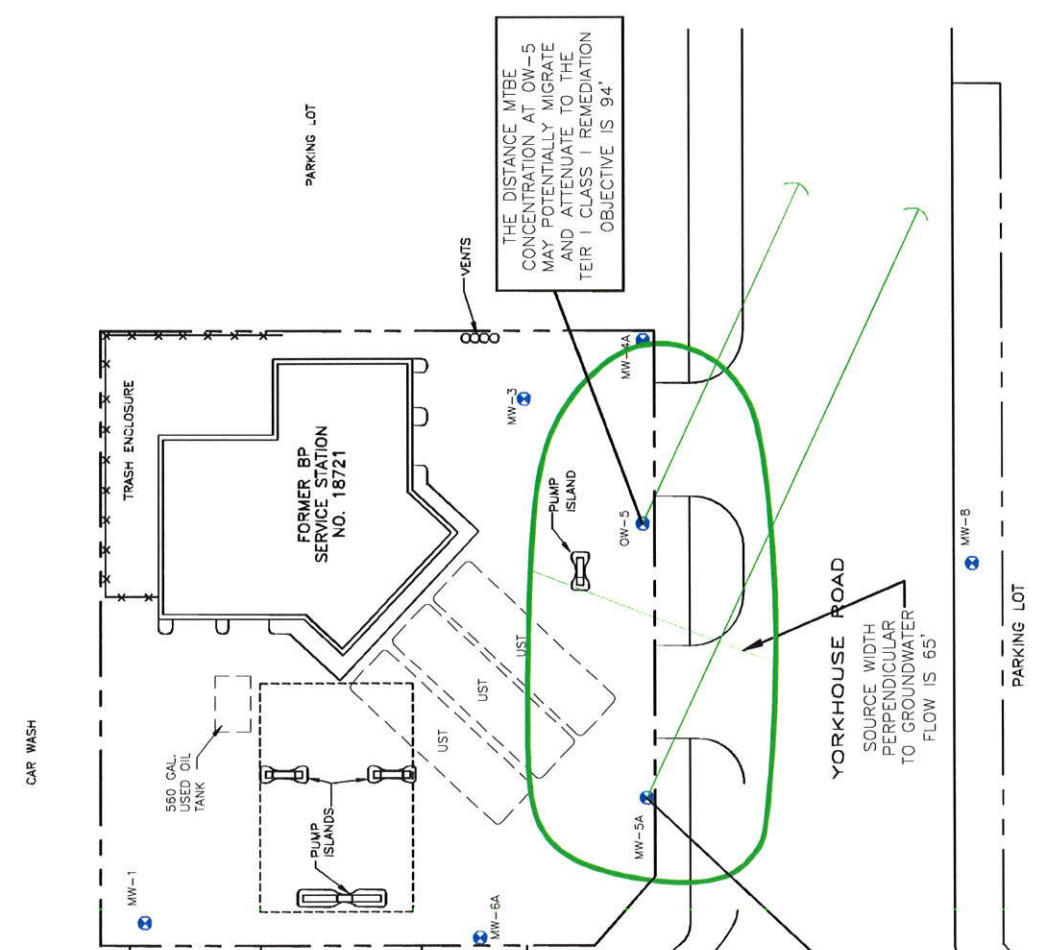
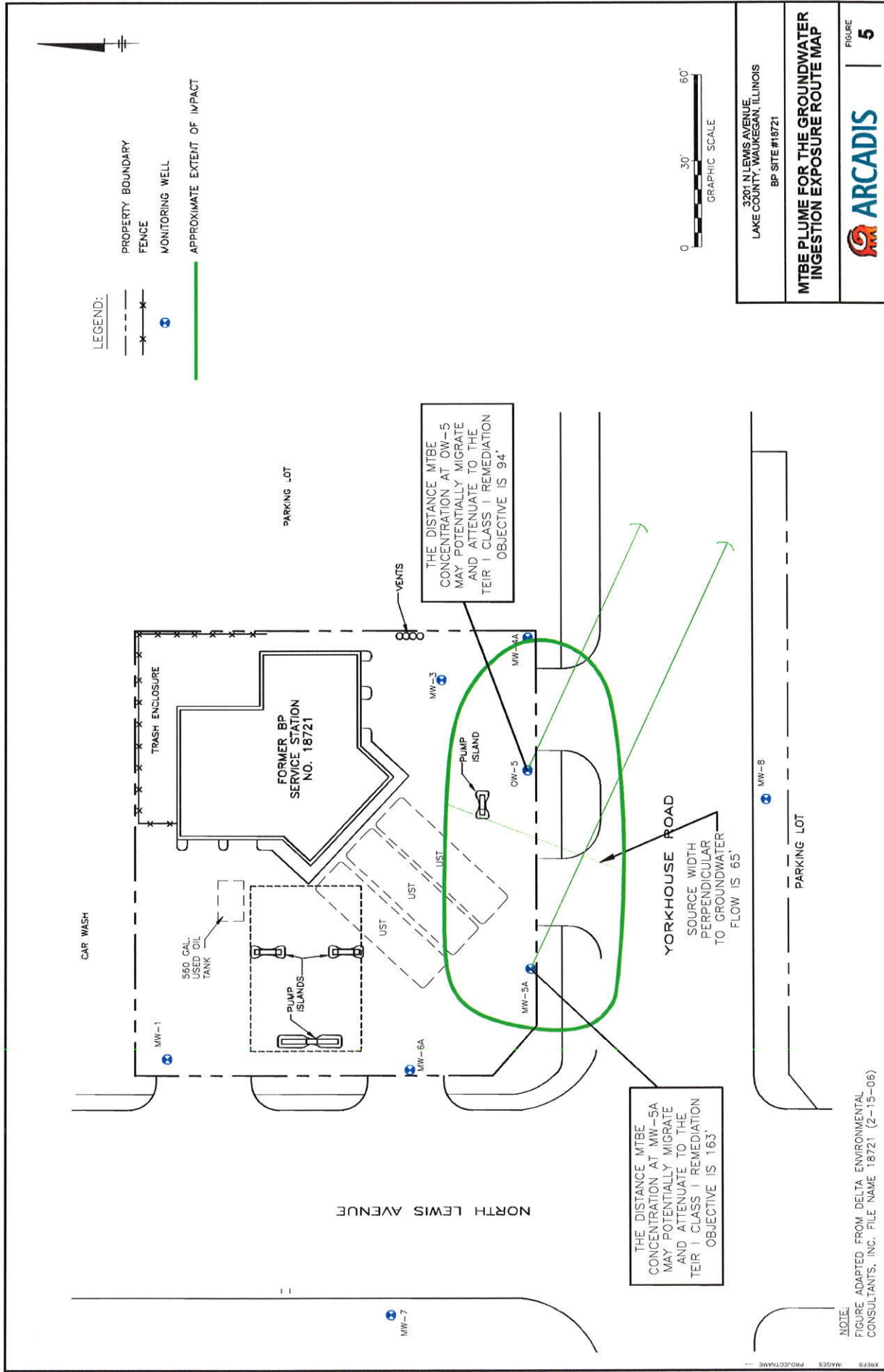
NOTE:
 FIGURE ADAPTED FROM DELTA ENVIRONMENTAL
 CONSULTANTS, INC. FILE NAME 18721 (2-15-06)

FORMER BP SERVICE STATION #18721
 LAKE COUNTY, WAUKEGAN, ILLINOIS
 BP SITE #18721

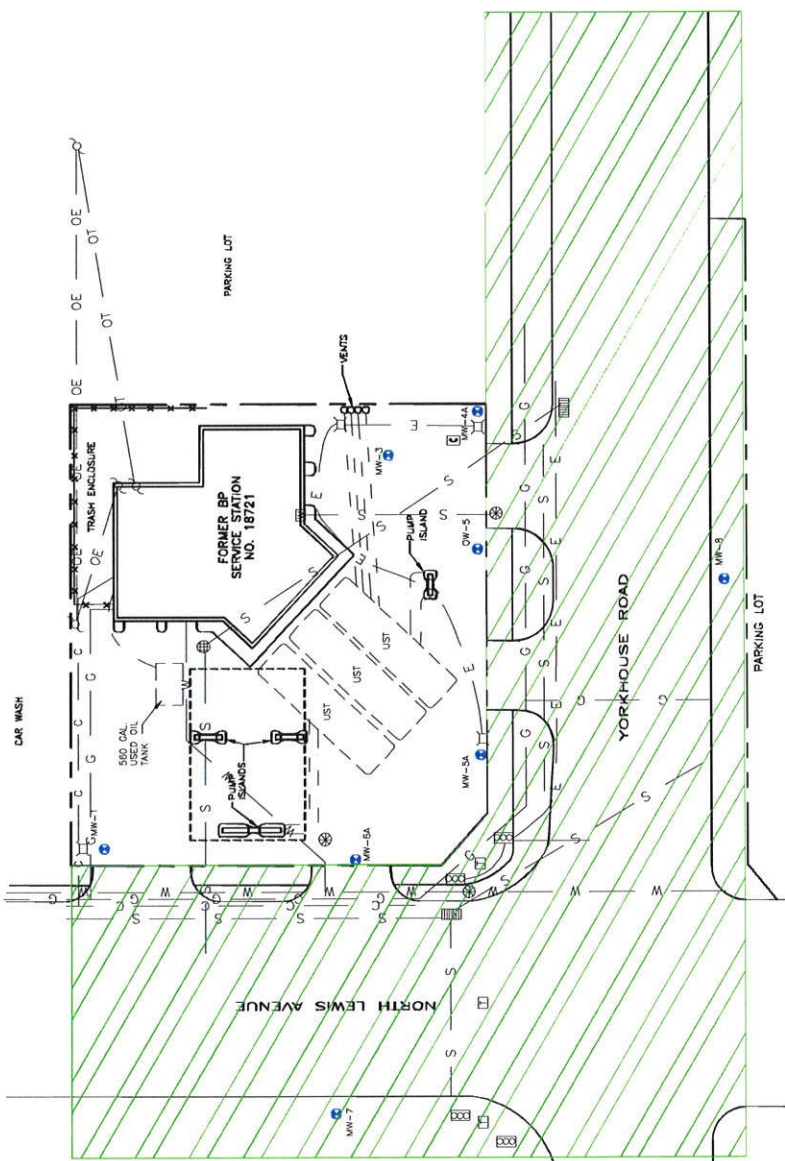
GROUNDWATER MONITORING MAP
 - DECEMBER 8, 2011

ARCADIS | FIGURE 3



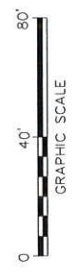


NOTE: FIGURE ADAPTED FROM DELTA ENVIRONMENTAL CONSULTANTS, INC. FILE NAME 18721 (2-15-06)



LEGEND:

- PROPERTY BOUNDARY
- - - FENCE
- ⊕ MONITORING WELL
- E - ELECTRIC LINE
- C - COMMUNICATIONS LINE
- G - GAS LINE
- S - SEWER LINE
- W - WATER LINE
- OE - OVERHEAD ELECTRIC LINE
- OT - OVERHEAD TELEPHONE LINE
- ⊞ CATCH BASIN
- ⊙ MANHOLE
- ⊠ TELEPHONE BOX
- ⊡ WATER METER
- ⊣ UTILITY POLE
- ⊞ PHONE
- ⊞ LIGHT
- ⊞ TRAFFIC LIGHT
- ▨ AREA SUBJECT TO LAKE COUNTY HIGHWAY AUTHORITY AGREEMENT



FORMER BP SERVICE STATION #18721
 3201 NORTH LEWIS AVENUE
 LAKE COUNTY, WAUKESHA, ILLINOIS

LAKE COUNTY HIGHWAY AUTHORITY
 AGREEMENT MAP



FIGURE
6

NOTE:
 FIGURE ADAPTED FROM DELTA ENVIRONMENTAL
 CONSULTANTS, INC. FILE NAME 18721 (2-15-06)