

**SIGN LEGEND**

- ① STOP SIGN, R1-1
- ② CROSSWALK, R1-6
- ③ RIGHT TURN ONLY, R3-5R
- ④ SERVICE ONLY DRIVEWAY
- ⑤ ONE WAY, R6-2R
- ⑥ DO NOT ENTER, R5-1
- ⑦ NO PARKING, FIRE LANE
- ⑧ FUEL EFFICIENT VEHICLE
- ⑨ NO PARKING FIRE DEPT. USE ONLY

**PARKING SUMMARY**

LOT	BUILDING AREA	# OF SPACES PROVIDED	PARKING RATIO	# OF ACCESSIBLE SPACES	RATIO OF ACCESSIBLE SPACES
LOT 1	WHOLE FOODS IN-LINE RETAIL	50,388 SF 15,000 SF	180 158	5.0 / 1000 SF 4.0 / 1000 SF	6 TOTAL 1.8%
LOT 2	BANK OF AMERICA	4,500 SF	26	4.44 / 100 SF	2
TOTAL	69,888 SF				

**SITE DATA TABLE**

SECTION 34 & 35, TOWNSHIP 43N, RANGE 10E	
TOTAL SITE AREA:	7.88 ACRES
AREA DEVOTED TO RETAIL:	100%
PERCENT DEVOTED TO PUBLIC ROWS:	0%
PERCENT IMPERVIOUS:	76%
PERCENT OPEN SPACE:	24%
EXISTING ZONING:	UNINCORPORATED
PROPOSED ZONING:	COMMERCIAL DISTRICT

**NOTES:**

- ALL CURB AND GUTTER SHALL BE B-6.12 UNLESS OTHERWISE NOTED.
- SAWCUT 1.0' OF EXISTING EDGE OF PAVEMENT ALONG PLUM GROVE ROAD.
- ALL SIGNAGE SHALL CONFORM TO MANUAL OF UNIFORM TRAFFIC CONTROL DEVICES, LATEST EDITION.
- ARMOR TILE OR APPROVED ALTERNATE ALLOWED FOR TACTILE WARNING STRIP ON ACCESSIBLE RAMPS.
- ALL PARKING LOT STRIPES SHALL BE 4" WIDE PAINTED YELLOW.
- NOTED ISLANDS TO HAVE 3" CURB WITH DEPRESSIONS AS INDICATED.
- SEE ARCHITECTURAL PLANS BY STEWART NOSKY FOR INFORMATION.

**PAVING LEGEND**

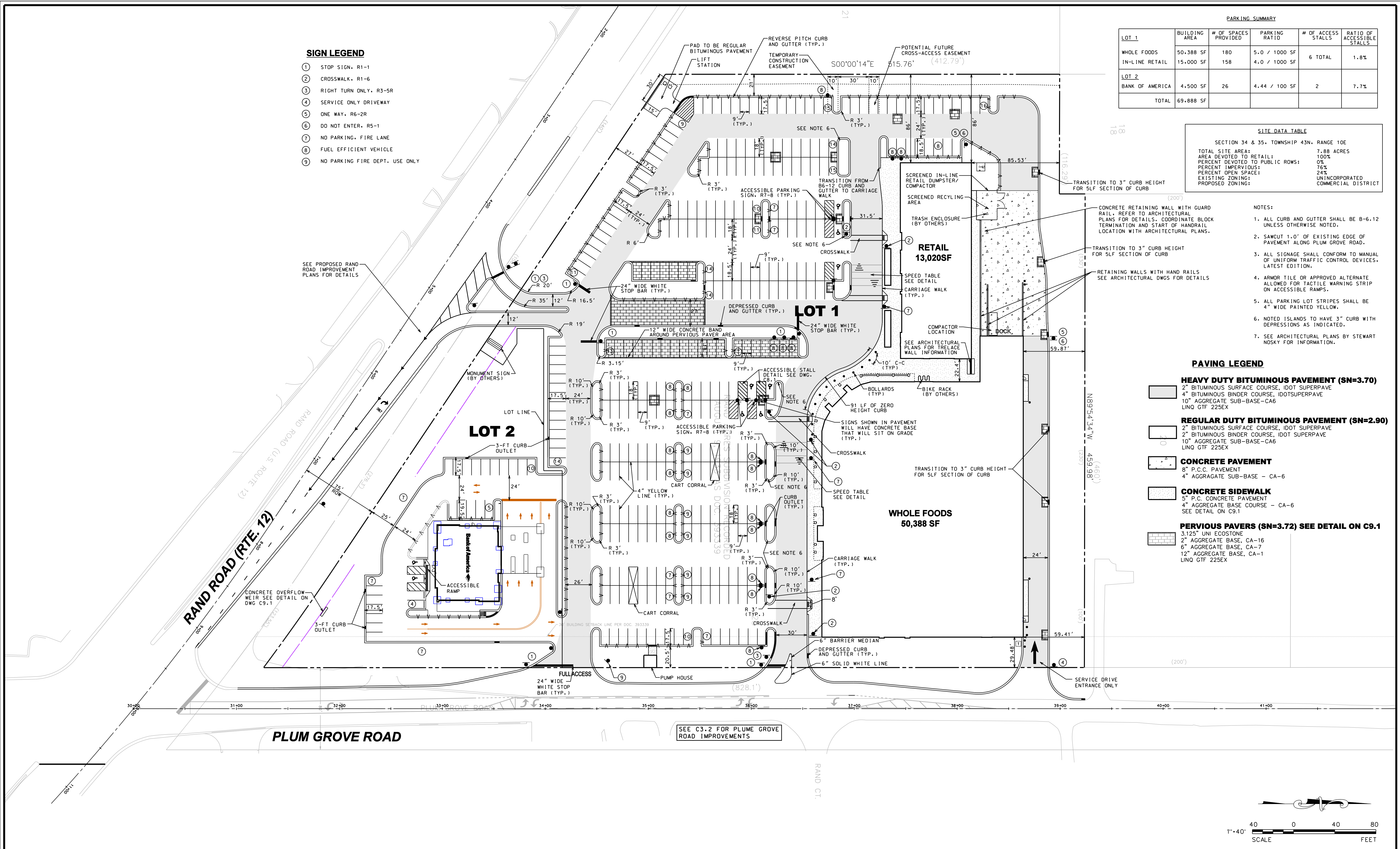
**HEAVY DUTY BITUMINOUS PAVEMENT (SN=3.70)**  
 2" BITUMINOUS SURFACE COURSE, IDOT SUPERPAVE  
 4" BITUMINOUS BINDER COURSE, IDOT SUPERPAVE  
 10" AGGREGATE SUB-BASE-CA6  
 LINO GTF 225EX

**REGULAR DUTY BITUMINOUS PAVEMENT (SN=2.90)**  
 2" BITUMINOUS SURFACE COURSE, IDOT SUPERPAVE  
 2" BITUMINOUS BINDER COURSE, IDOT SUPERPAVE  
 10" AGGREGATE SUB-BASE-CA6  
 LINO GTF 225EX

**CONCRETE PAVEMENT**  
 8" P.C.C. PAVEMENT  
 4" AGGREGATE SUB-BASE - CA-6

**CONCRETE SIDEWALK**  
 5" P.C. CONCRETE PAVEMENT  
 4" AGGREGATE BASE COURSE - CA-6  
 SEE DETAIL ON C9.1

**PERVIOUS PAVERS (SN=3.72) SEE DETAIL ON C9.1**  
 3.125" UNI ECOSTONE  
 2" AGGREGATE BASE, CA-16  
 6" AGGREGATE BASE, CA-7  
 12" AGGREGATE BASE, CA-1  
 LINO GTF 225EX



**REVISIONS**

NO.	DATE	DESCRIPTION	NO.	DATE	DESCRIPTION
1	03-21-08	REVISED PER VILLAGE REVIEW			
2	04-22-08	REVISED PER VILLAGE REVIEW			
3	05-07-08	REVISED PER VILLAGE REVIEW			
4	06-03-08	ISSUED FOR CONSTRUCTION			
7	01-21-09	22 JAN 2009 (VALUE ENGINEERING/PRICING)			
8	04-28-10	REVISED SITE PLAN			

SEAL:

PROJECT NO.:	06237 S04	DESIGNED BY:	RMW
FILE NAME:	LAY06237	DRAWN BY:	JLW
ORIGINAL ISSUE DATE:	01-29-08	CHECKED BY:	RMW
SCALE:	1"=40'	PROJECT MANAGER:	LJS

**KILDEER MARKETPLACE**

**LAYOUT, SIGNAGE AND STRIPING PLAN**

DRAWING NO.

**C3.1**

**V3 Companies**  
 7325 Janes Avenue  
 Woodridge, IL 60517  
 630.724.9200 phone  
 630.724.9202 fax  
 www.v3co.com

06237 S04 - LAYOUT, SIGNAGE AND STRIPING PLAN