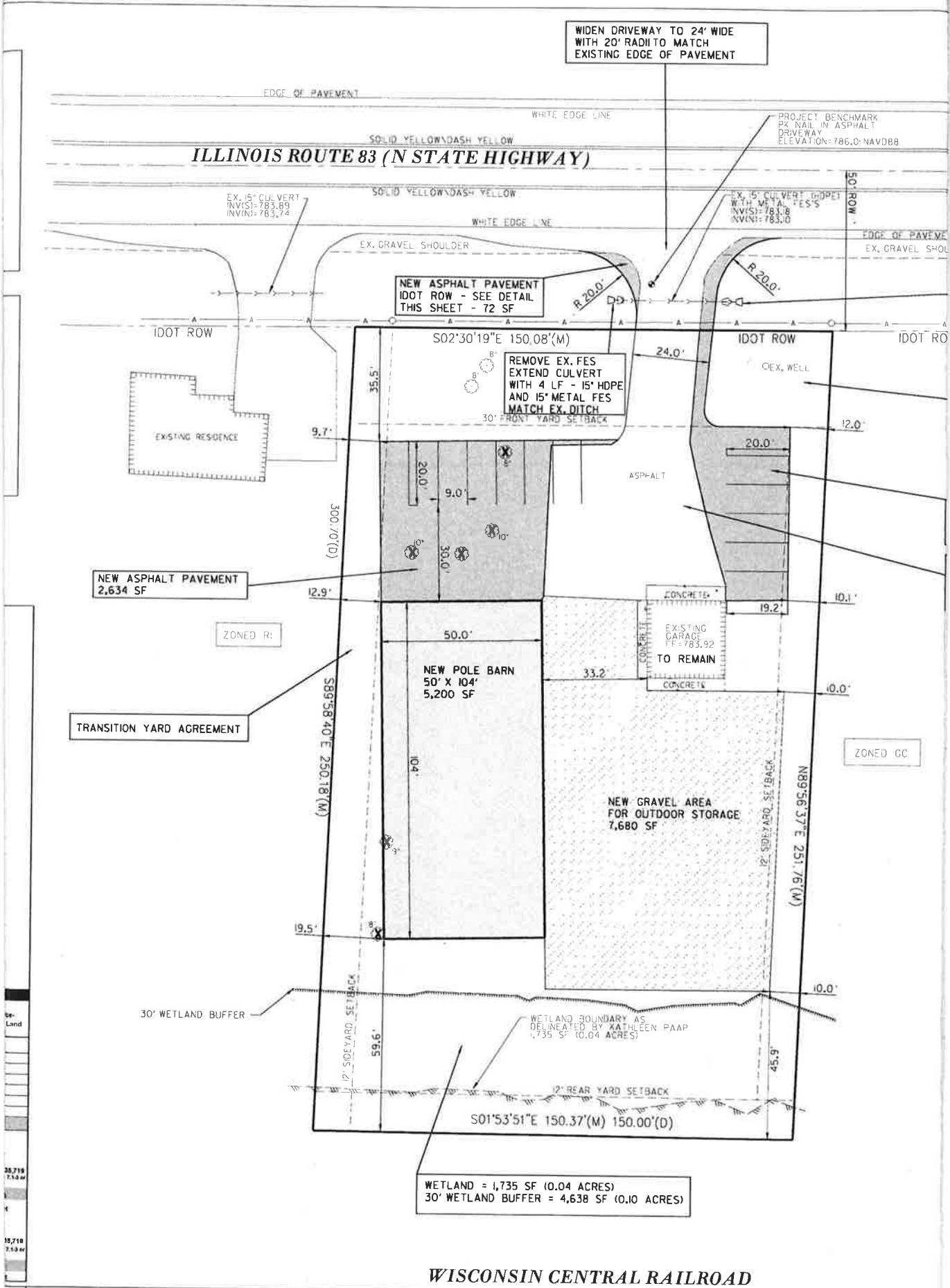


WIDEN DRIVEWAY TO 24' WIDE
WITH 20' RADIUS TO MATCH
EXISTING EDGE OF PAVEMENT



ILLINOIS ROUTE 83 (N STATE HIGHWAY)

NEW ASPHALT PAVEMENT
IDOT ROW - SEE DETAIL
THIS SHEET - 72 SF

REMOVE EX. FES
EXTEND CULVERT
WITH 4 LF - 15" HDPE
AND 15' METAL FES
MATCH EX. DITCH

NEW ASPHALT PAVEMENT
2,634 SF

NEW POLE BARN
50' X 104'
5,200 SF

NEW GRAVEL AREA
FOR OUTDOOR STORAGE
7,680 SF

WETLAND = 1,735 SF (0.04 ACRES)
30' WETLAND BUFFER = 4,638 SF (0.10 ACRES)

WISCONSIN CENTRAL RAILROAD

TLT FINANCIAL
NEW POLE BARN AND SITE IMPROVEMENTS
4089 N. ILLINOIS ROUTE 83, ANTIOCH ILLINOIS

SITE PLAN