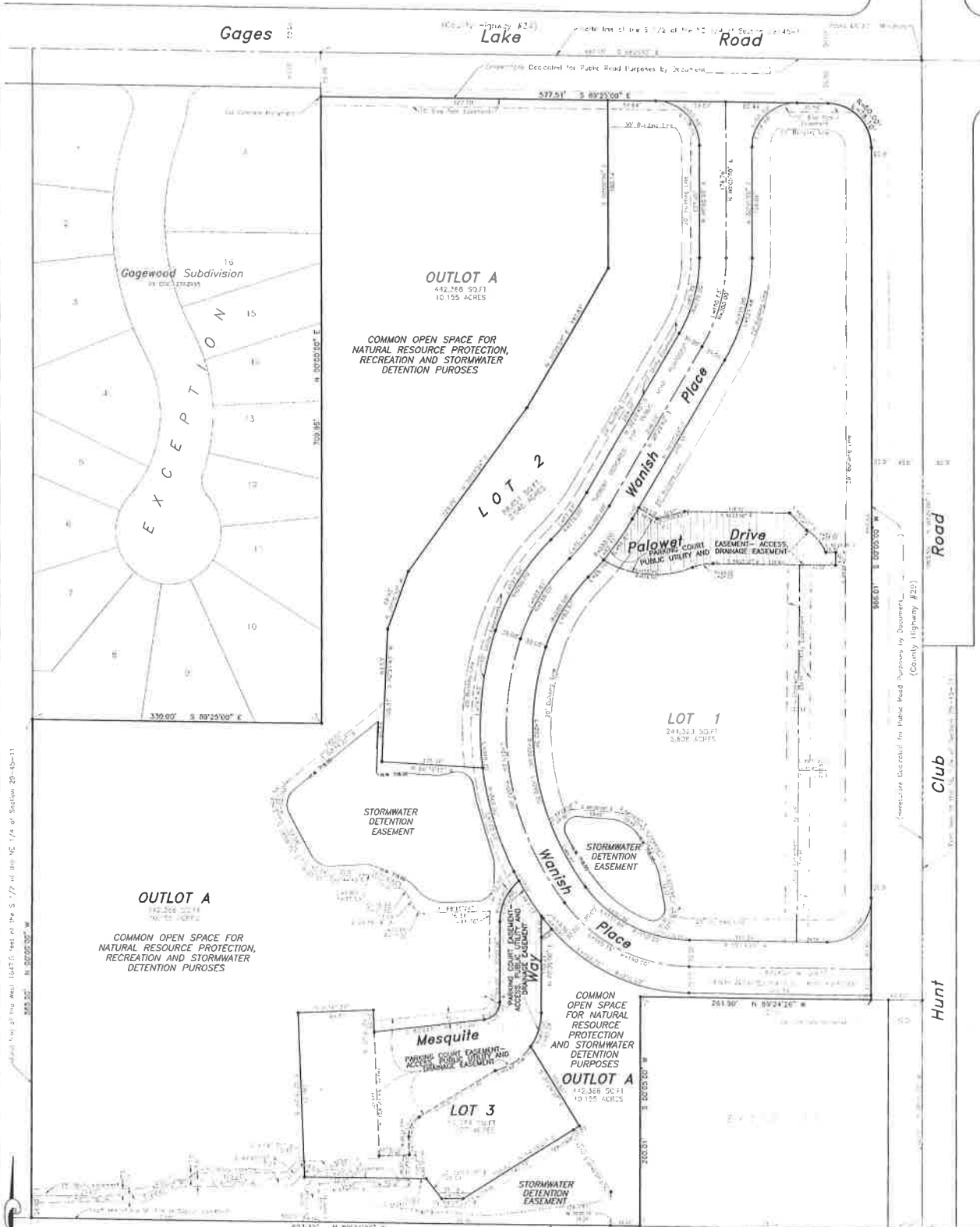


# WANISH PARK PLANNED UNIT DEVELOPMENT BEING A MULTI DWELLING AND MULTIPLEX RESIDENTIAL SUBDIVISION

TOTAL AREA:  
21.043 ACRES

OWNER: HANSHAW/STANLEY TRUST, PLLC  
RECORDING: 2008/05/23 10:24 AM  
PLAT: 2008/05/23 10:24 AM  
LOCAL: 2008/05/23 10:24 AM  
LAWYER: RICHARD W. BENTLEY  
LAW FIRM: BENTLEY, BENTLEY & BENTLEY, P.C.  
COUNTY: CLATSOP  
STATE: OREGON  
PROJECT: WANISH PARK PLANNED UNIT DEVELOPMENT  
DRAWN BY: JAMES W. HANSHAW  
DATE: 05/23/08  
SCALE: AS SHOWN  
JOB NO: 08-001

Doc b326631 4-1-08



1/4 of the S. 1/4 of the NE 1/4 of Section 20-40-11



GRAPHIC SCALE



NO.	DESCRIPTION
1	STORMWATER DETENTION EASEMENT
2	PARKING COURT EASEMENT-ACCESS, EGRESS, EASEMENT AND PUBLIC UTILITY
3	EASEMENT-ACCESS, EGRESS, EASEMENT, PUBLIC UTILITY AND DRAINAGE EASEMENT
4	WATER COURT EASEMENT-ACCESS, EGRESS, EASEMENT AND PUBLIC UTILITY
5	STORMWATER DETENTION EASEMENT
6	STORMWATER DETENTION EASEMENT
7	STORMWATER DETENTION EASEMENT
8	STORMWATER DETENTION EASEMENT
9	STORMWATER DETENTION EASEMENT
10	STORMWATER DETENTION EASEMENT

R.E. ALLEN and associates, llc.