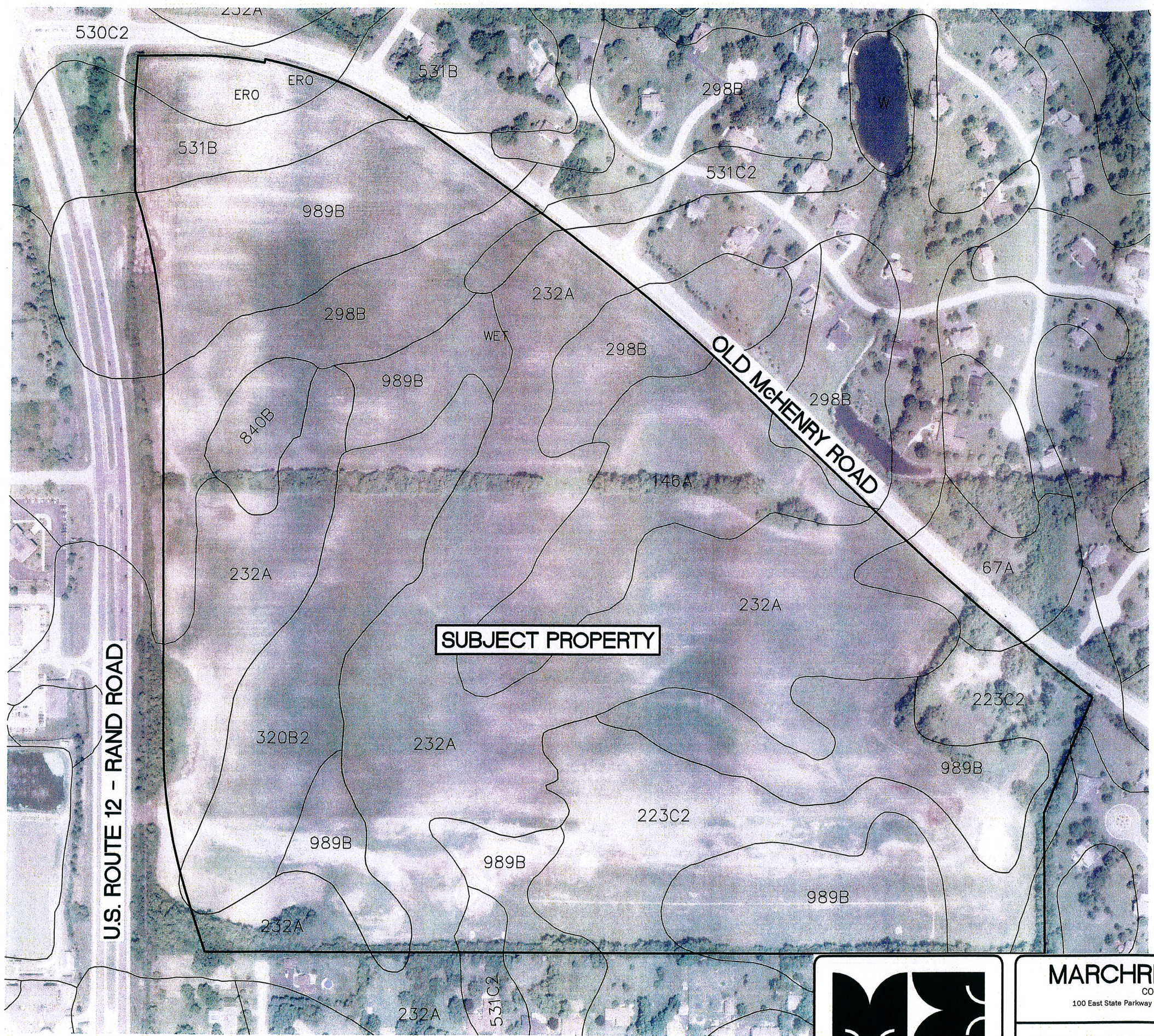


**SUPPORTING DOCUMENT  
SOILS INFORMATION**

Attached is a map and legend indicating the soils that are within the property.

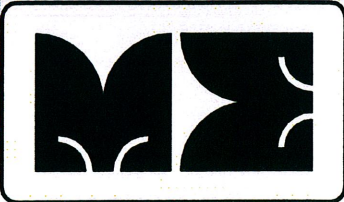


G:\10jobs\100. 032-ITEM14.dwg, 9/9/2010 4:17:12 PM, gordon, 1:300



- 67A HARPSTER SILTY CLAY LOAM, 0 TO 2 PERCENT SLOPES
- 146A ELLIOTT SILT LOAM, 0 TO 2 PERCENT SLOPES
- 223C2 VARNA SILT LOAM, 4 TO 6 PERCENT SLOPES, ERODED
- 232A ASHKUM SILTY CLAY LOAM, 0 TO 2 PERCENT SLOPES
- 298B BEECHER SILT LOAM, 2 TO 4 PERCENT SLOPES
- 320B2 FRANKFORT SILTY CLAY LOAM, 2 TO 4 PERCENT SLOPES, ERODED
- 530C2 OZAUKEE SILT LOAM, 4 TO 6 PERCENT SLOPES, ERODED
- 531B MARKHAM SILT LOAM, 2 TO 4 PERCENT SLOPES
- 531C2 MARKHAM SILT LOAM, 4 TO 6 PERCENT SLOPES, ERODED
- 840B ZURICH AND OZAUKEE SILT LOAMS, 2 TO 4 PERCENT SLOPES
- 989B MUNDELEIN AND ELLIOTT SILT LOAMS, 2 TO 4 PERCENT SLOPES

SOILS INFORMATION OBTAINED FROM LAKE COUNTY AND USDA NRCS.



**MARCHRIS ENGINEERING, LTD.**  
CONSULTING ENGINEERS AND PLANNERS  
100 East State Parkway · Schaumburg, IL 60173 · Tel: 847-885-8357 Fax: 847-885-2252  
www.marchris.net

<b>SOILS INFORMATION</b>	DESIGN: MJC	DRAFTING: TDG
	SCALE: 1"=300'	DATE: 9-10-10

**NORTH**

JOB NO. 10-032

**ITEM 24**