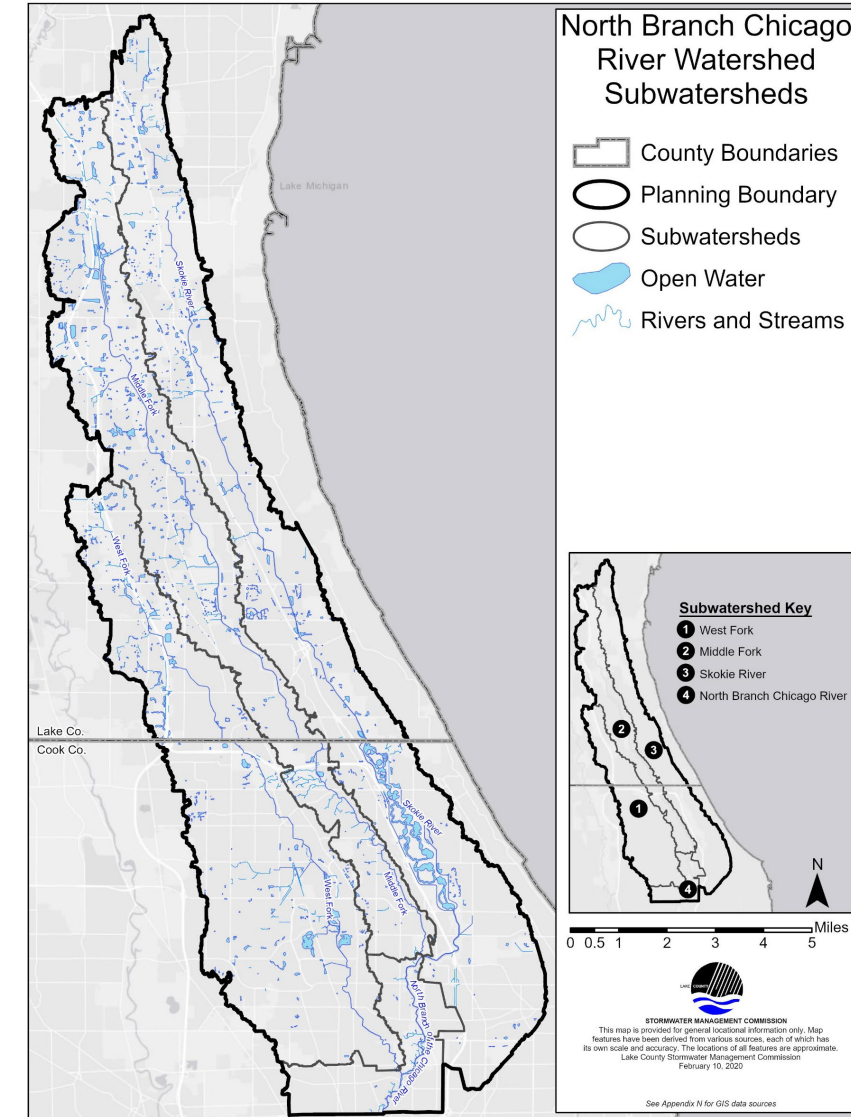
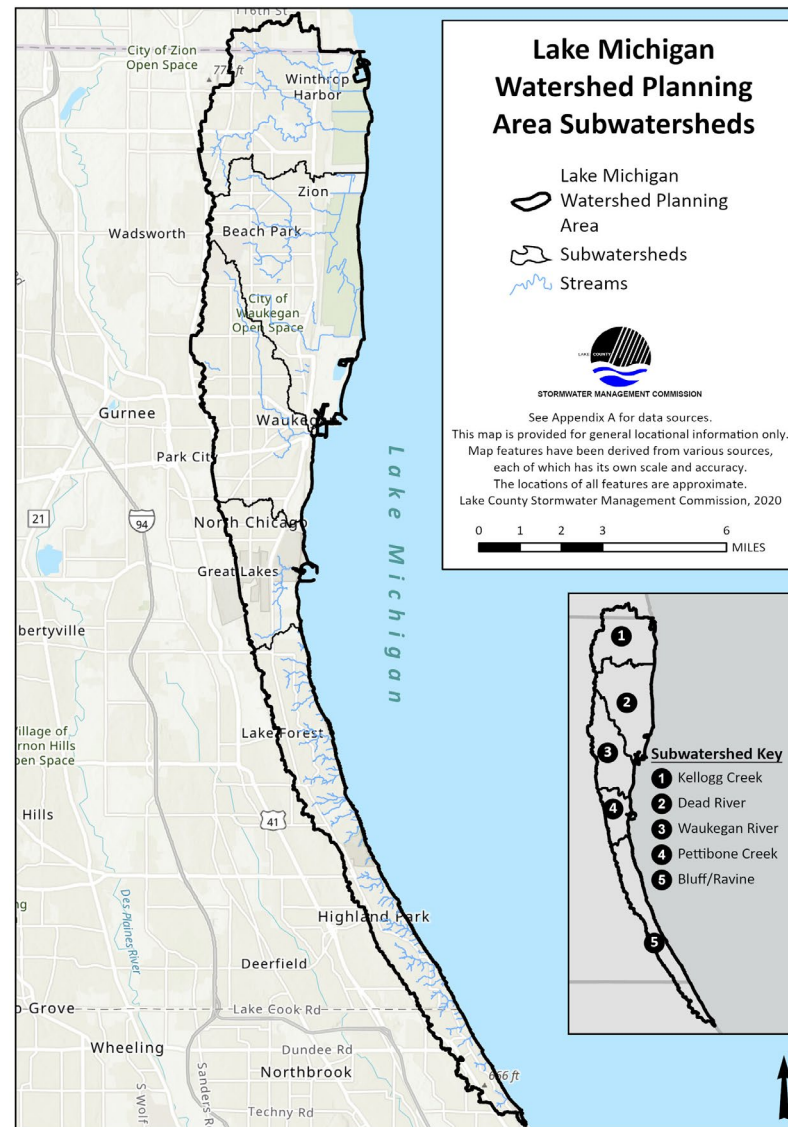


Lake Michigan & North Branch Chicago River Watershed-Based Plans

August 30, 2023

Lake County Planning, Building Zoning
& Environmental Committee Meeting



Mike Prusila, Planning Supervisor & Ashley Strelcheck, Water Resource Professional,
Lake County Stormwater Management Commission

Watershed-Based Plans

What

- “Roadmap” for all stakeholders to accomplish watershed goals
- Implementation is voluntary

Who

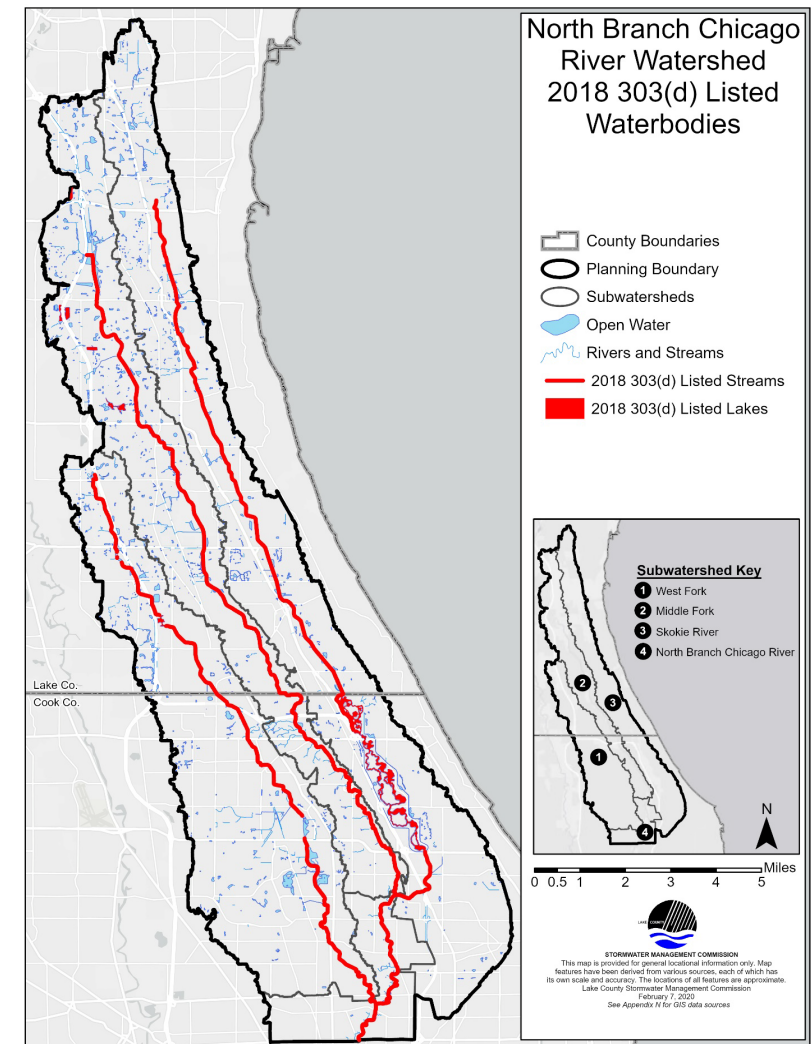
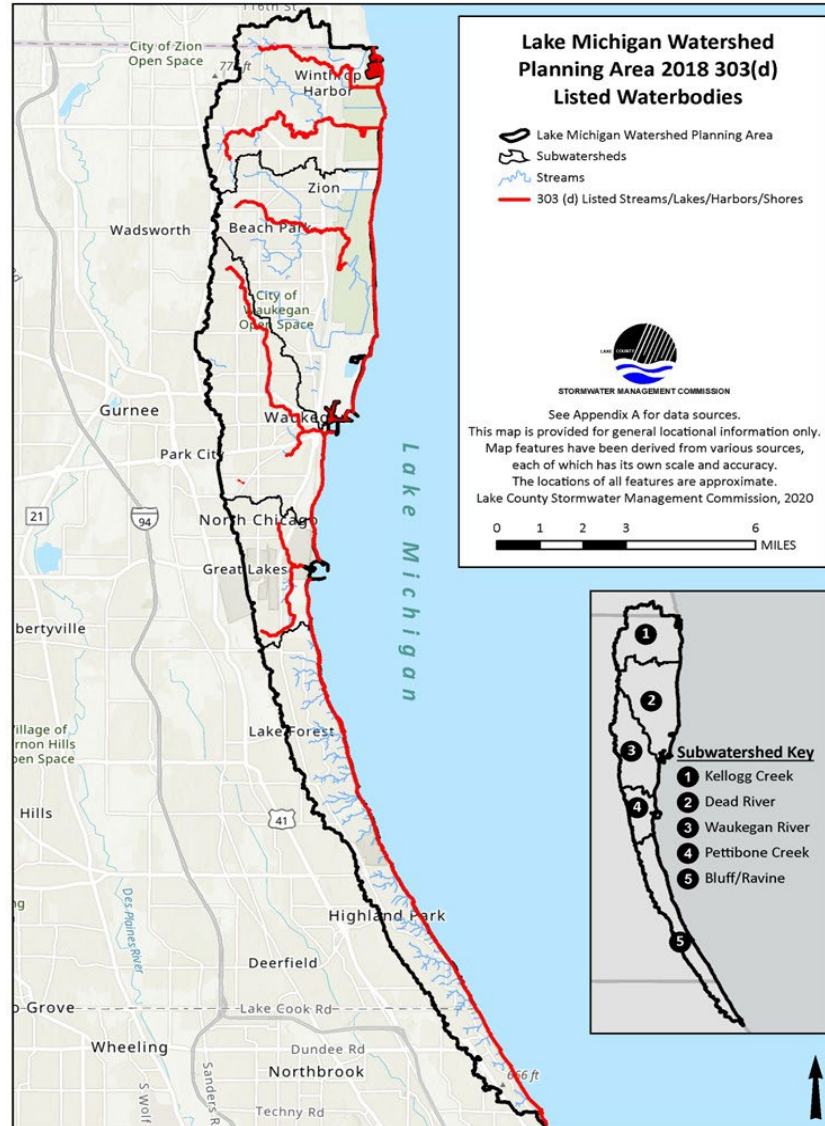
- **ALL** watershed stakeholders
- Water does not generally flow according to political boundaries.

Why

- Addresses water-related issues in communities
- Comprehensive summary of existing watershed conditions and trends
- Identify potential projects & funding

Watershed Assessment

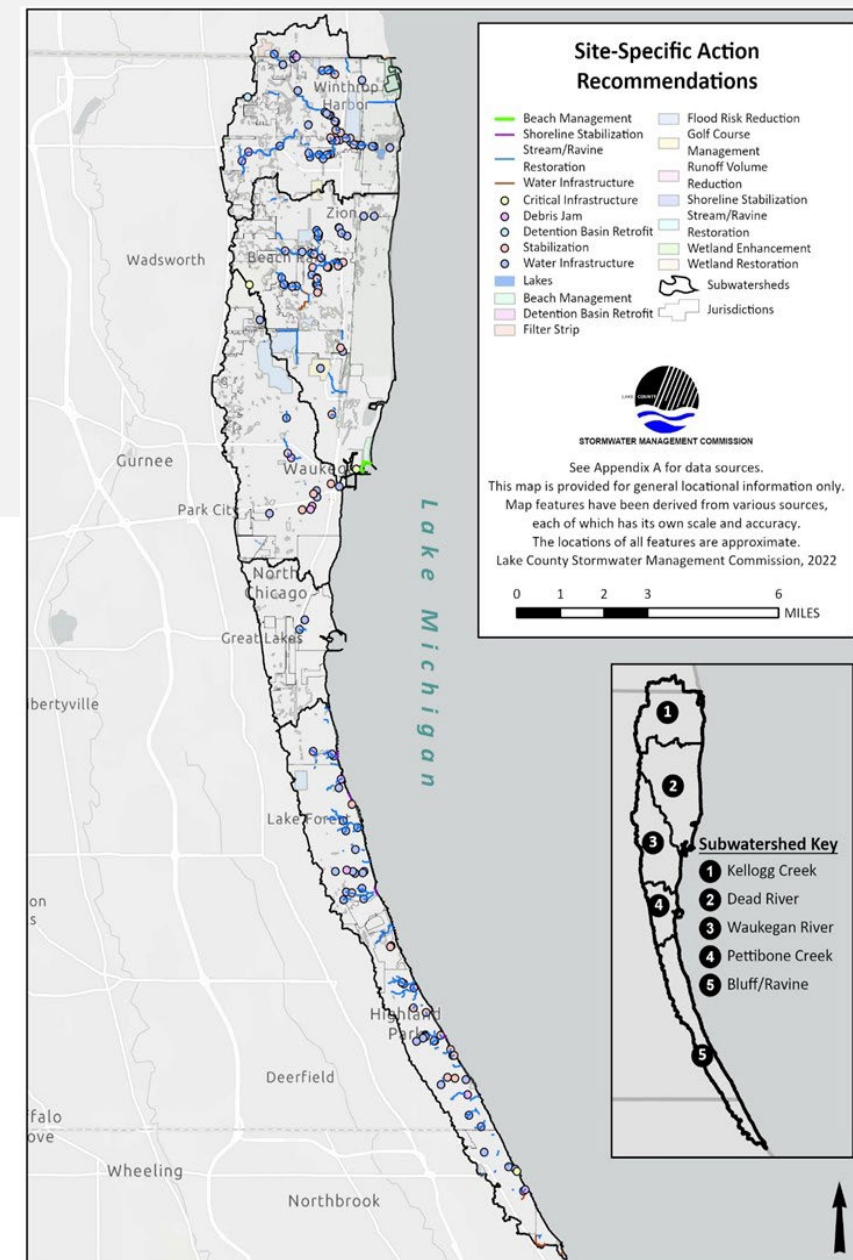
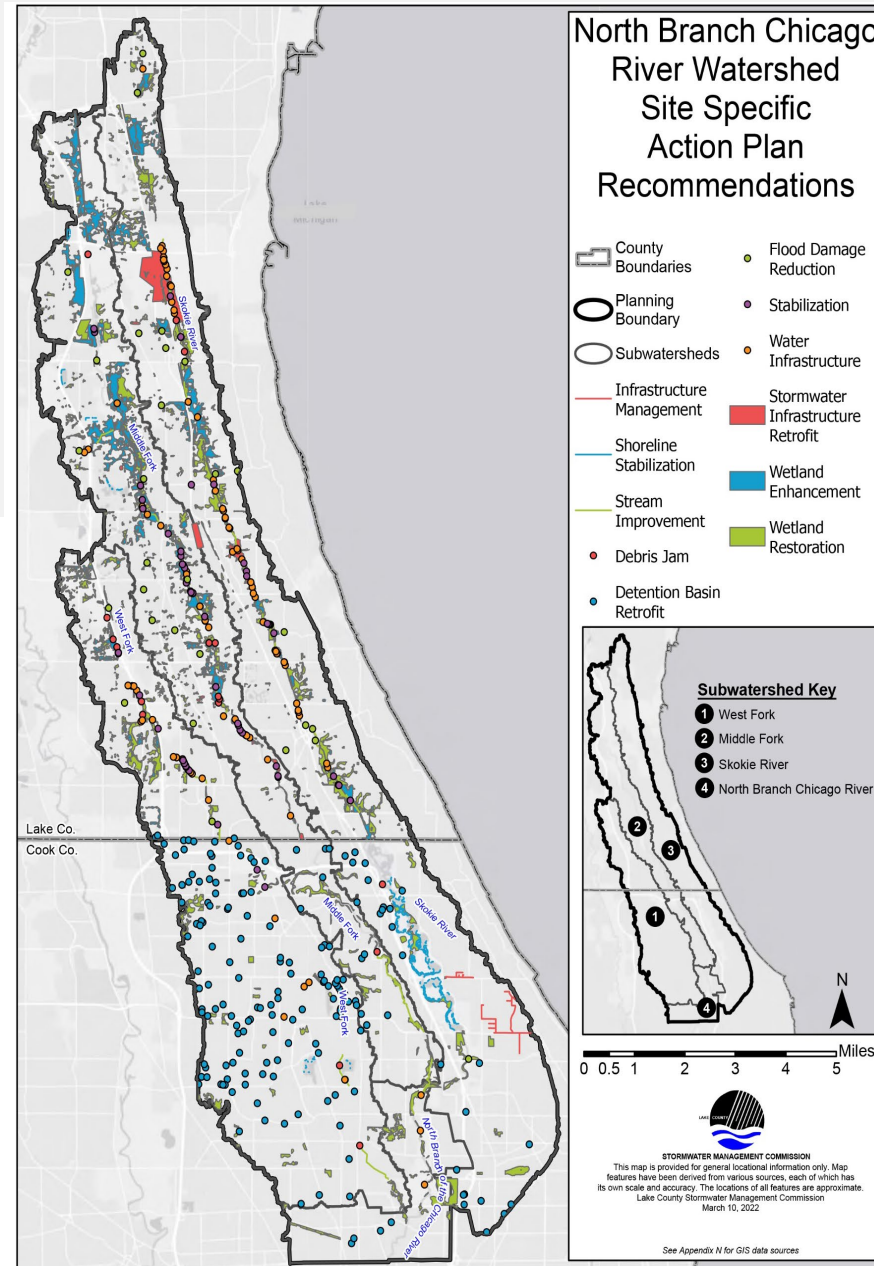
- Summary of natural & human watershed characteristics
- Field inventories
- Water quality: streams & shoreline segments, lakes and harbors
- Impervious cover & future land use
- Critical areas
- Flood assessment



Action Plan

TYPES OF ACTIONS

- Site-specific
- Basin-wide site-specific
- Previous watershed plans
- Critical areas



Site- Specific Actions

Lake Michigan BMPs

- *Total cost: \$217 – 253 million*
- *Total Projects: 1,379*

North Branch Chicago River BMPs

- *Total cost: \$386 – 387 million*
- *Total Projects: 1,558*

Best Management Practice Types

- | | |
|-----------------------------------|---|
| ➤ Beach management | ➤ Runoff volume reduction |
| ➤ Critical infrastructure | ➤ Shoreline stabilization |
| ➤ Debris jam | ➤ Stabilization |
| ➤ Detention basin retrofit | ➤ Stormwater infrastructure retrofit |
| ➤ Filter strip | |
| ➤ Flood risk and damage reduction | ➤ Stream/ravine restoration and improvement |
| ➤ Golf course management | ➤ Water infrastructure |
| ➤ Infrastructure management | ➤ Wetland enhancement & restoration |

Plan Implementation & Evaluation

1. Working with local partners & stakeholders – Plan & Priorities for Year 1 Actions
2. Research & secure funding and technical assistance
3. Coordinate programs, policy changes, and other local initiatives and programs
4. Promote and adopt the plan
 - a) Lake Michigan Watershed-Based Plan: <https://www.lakecountyil.gov/2418/Lake-Michigan-Watershed>
 - b) North Branch Chicago River Watershed-Based Plan: <https://www.lakecountyil.gov/2433/North-Branch-Chicago-River-Watershed>