



Lake County Public Works Office Addition / Renovation Project

650 West Winchester Road
Libertyville, Illinois 60048

Village of Libertyville Appearance Review Submittal

October 23, 2024

Project Narrative

The Lake County Public Works Offices are located at 650 West Winchester Road on the southwest corner of the Lake County Libertyville Campus. The original building was constructed in 1979 and expanded in 2004. The proposed project consists of a 2,393 square foot building addition at the southeast corner of the existing building and will include four additional private offices and up to eight additional open work-stations to accommodate a growing staff. The project will also include updates to the existing HVAC system. The intent of the building addition is to blend with the appearance of the existing building including brick color, height, and window openings.

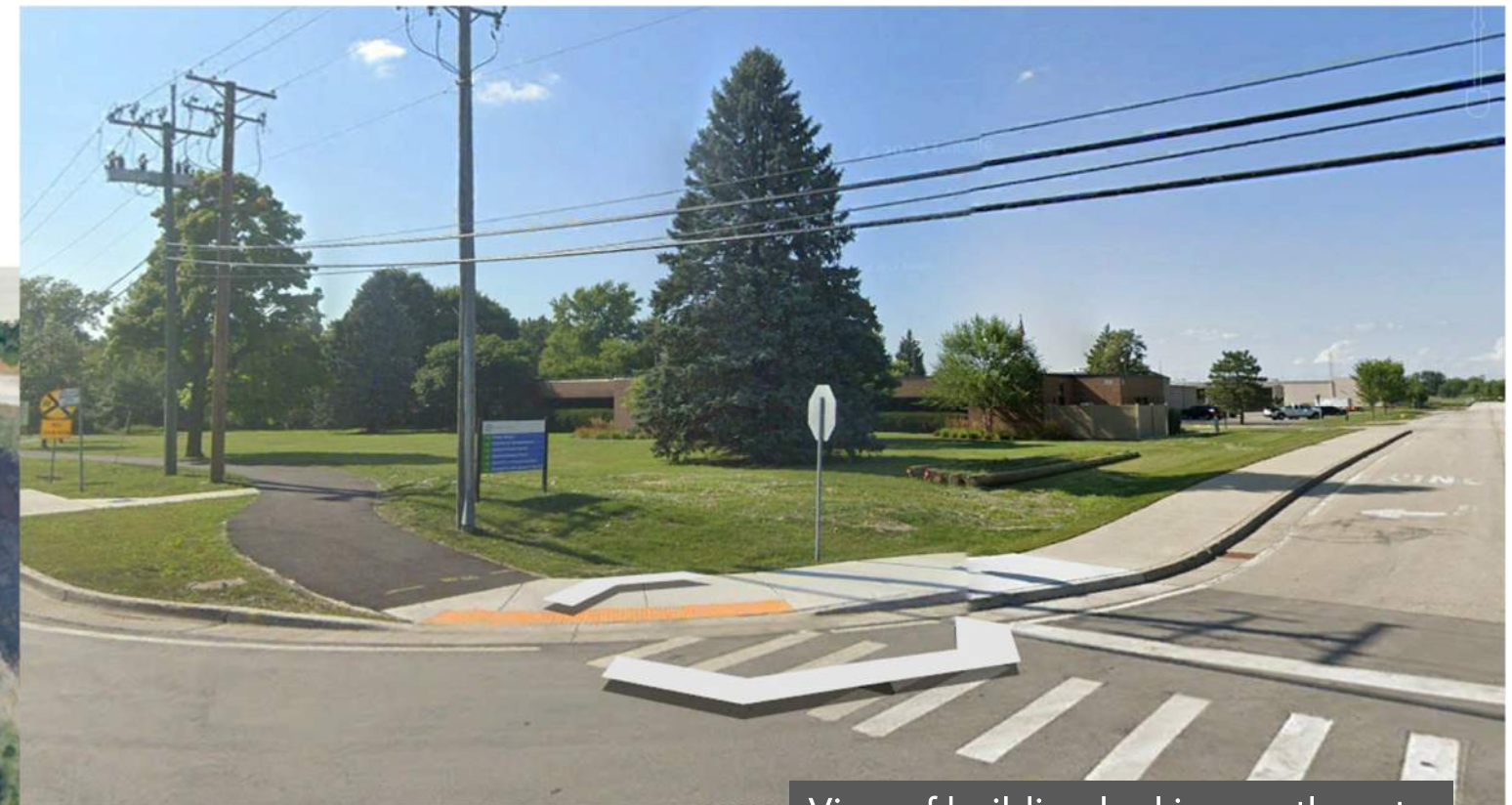
The scope of the project does not include the expansion of any of the existing parking areas.

Table of Contents

- Project Location Illustration and existing photos
- Site Plan
- Building Elevations
- Landscape Plan
- Light Fixture Information



Public Works Office
Addition / Renovation Project



View of building looking northwest

PROJECT LOCATION
EXISTING CAMPUS AERIAL IMAGE

Image Credit: Google Earth, dated 5/23/2023

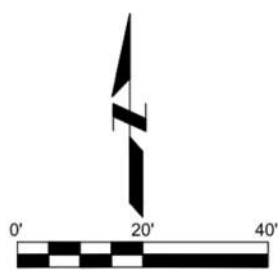
Lake County Public Works Office Addition
Job No. 24-4020.01

Published 10/23/2024
© 2024 FGM Architects Inc.





Public Works Office
Addition / Renovation Project



SITE PLAN



Public Works Office
Addition / Renovation Project



Proposed building
addition

AERIAL DEPICTION OF BUILDING ADDITION

Lake County Public Works Office Addition
Job No. 24-4020.01

Published 10/23/2024
© 2024 FGM Architects Inc.

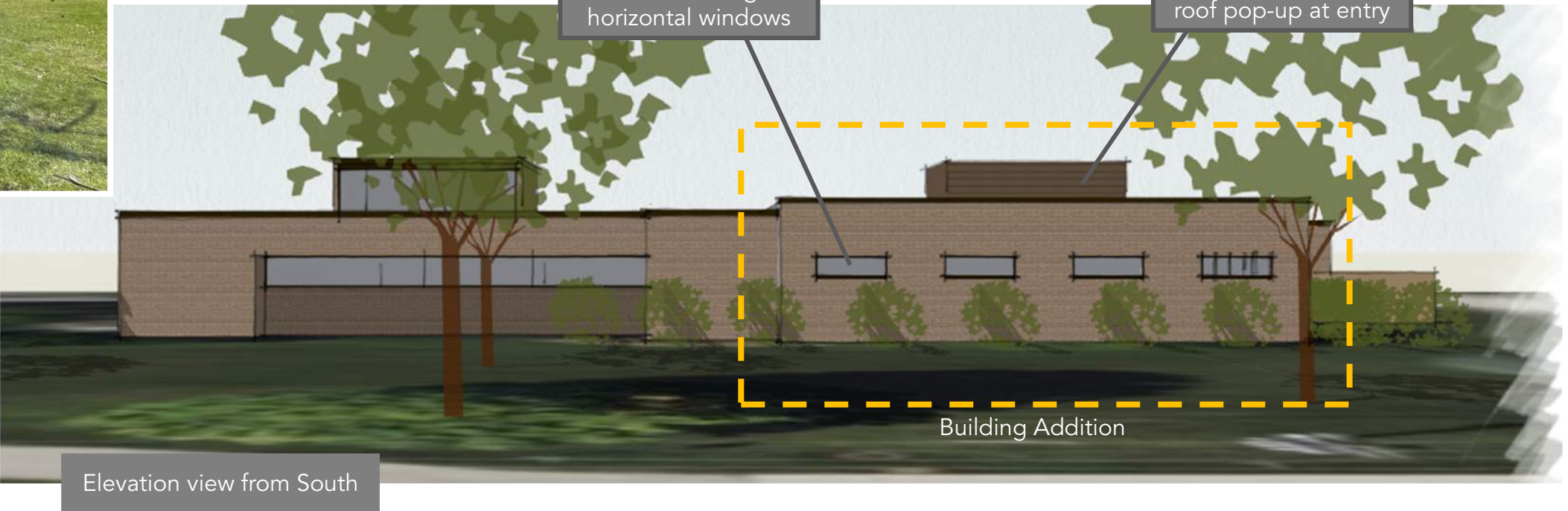
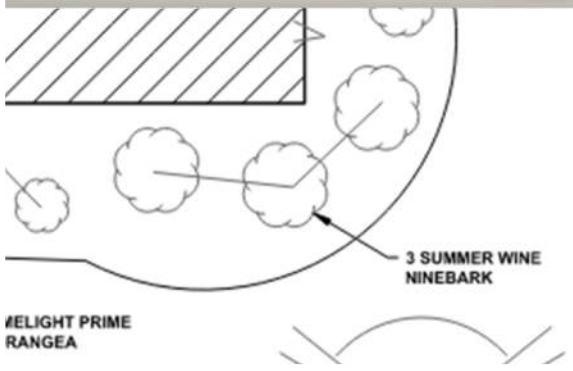




Public Works Office Addition / Renovation Project

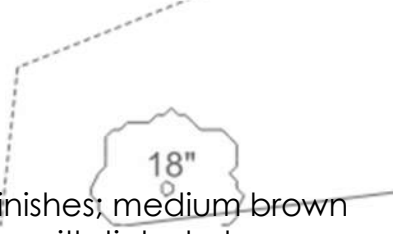


Photo of Existing Building



Exterior Finishes

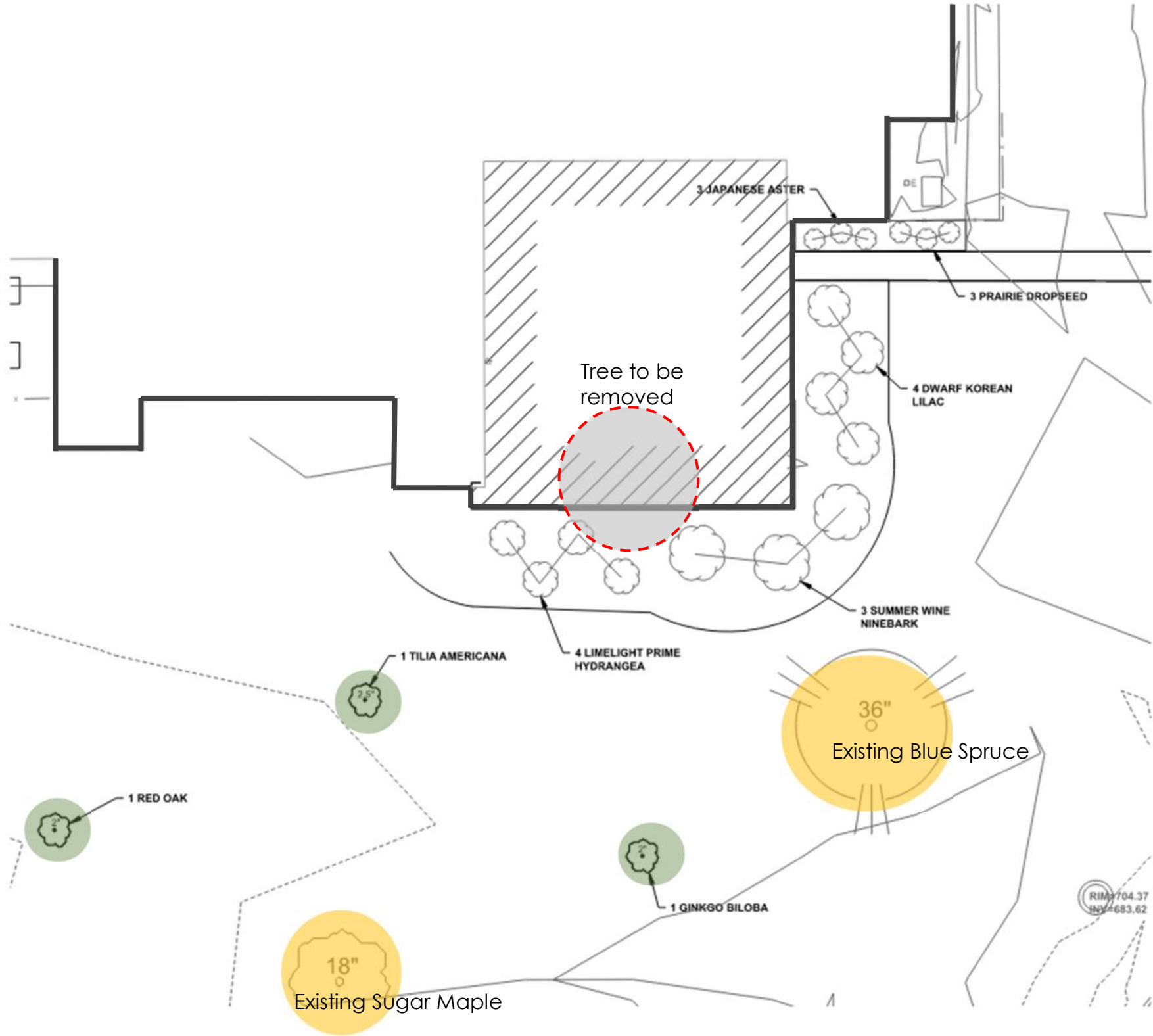
The project intent is to match the existing finishes; medium brown brick, dark bronze anodized window frames with tinted glass, and metal copings. The intent of the new HVAC roof screening will be horizontal metal panel in a medium brown color.



EXTERIOR ELEVATIONS



Public Works Office
Addition / Renovation Project

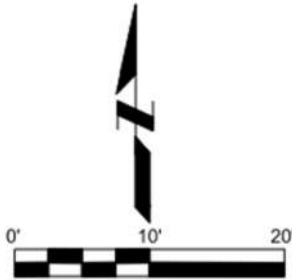


Landscaping Plan		
Qty	Description	Size
1	AMERICAN LINDEN (BASSWOOD) Tree: Tilia Americana	2.5"
1	RED OAK Tree: Quercus Rubra	2"
1	GINKGO Tree: Ginkgo Biloba	2"
3	TARA PRAIRIE DROPSEED Perennial: Sporobolus heterolepis 'Tara'	3'
3	JAPANESE ASTER Perennial: Kalimeris incisa 'Blue Star'	2'
3	SUMMER WINE NINEBARK Shrub: Physocarpus opulifolius 'Seward'	8'
4	DWARF KOREAN LILAC Shrub: Syringa meyeri 'Palibia'	7'
4	LIMELIGHT PRIME HYDRANGEA Shrub: Hydrangea paniculata 'Limelight Prime'	5'

Landscape Notes

The building addition is located in an existing turfed area adjacent to the existing building. As part of the construction an existing 11" dia. Norway Maple tree will need to be removed. Per the PUD landscape requirements, we are installing three (3) new trees as shown.

Foundation Plantings
New foundation plantings will be installed at the building addition.

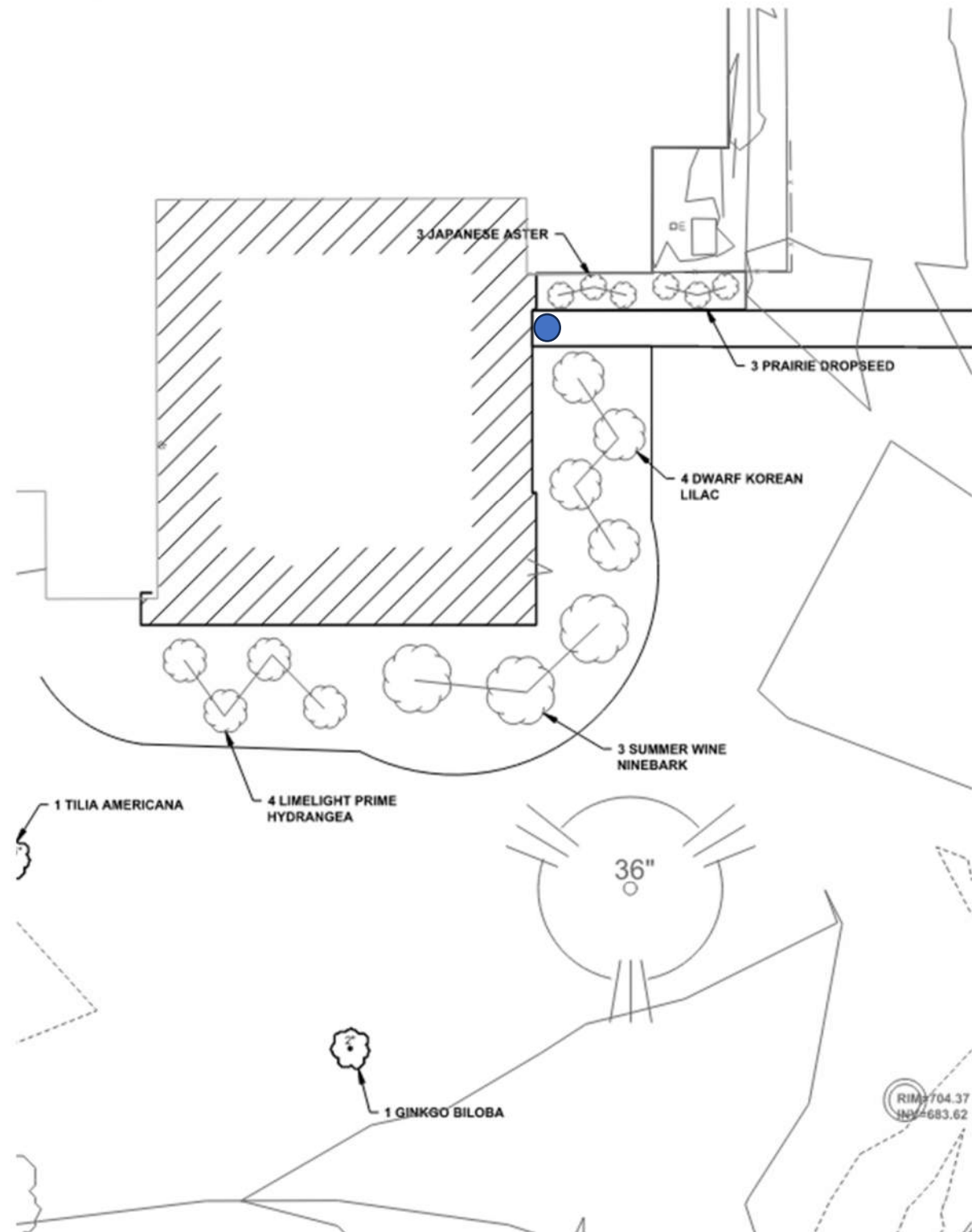


LANDSCAPE PLAN





Public Works Office
Addition / Renovation Project



There will be one wall mounted exterior light fixture mounted above the new egress door. See blue dot on above plan.

EXTERIOR LIGHTING



FEATURES

- Low profile LED wall luminaire with a variety of IES distributions for lighting applications such as retail, commercial and industrial building mount
- Featuring Strike and Micro Strike Optics which maximizes target zone illumination with minimal losses at the house-side, reducing light trespass issues
- Visual comfort standard
- Control options including photo control, occupancy sensing, NX Distributed Intelligence™, LightGRID+ and 7-Pin with networked controls
- Battery Backup options available for emergency code compliance
- Quick-mount adapter allows easy installation/maintenance
- 347V and 480V versions for industrial applications and Canada



CONTROL TECHNOLOGY



SERVICE PROGRAM

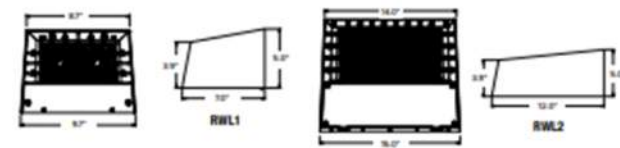


SPECIFICATIONS

ORDERING GUIDE

CATALOG # Example: RWL1-48L-10-3K7-2-UNV-BLS-E

Series	# LEDs - Wattage	CCT/CRI	Distribution	Voltage	Color
RWL1 Micro Strike Optics	48L-10 1,000 Lumens ^{5,6}	3K7 3000K, 70 CRI	2 IES TYPE II	UNV 120-277V	BLT Black Matte Textured
	48L-15 2,000 Lumens ^{5,6}	4K7 4000K, 70 CRI	3 IES TYPE III	120 120V	BLS Black Gloss Smooth
	48L-20 2,500 Lumens ^{5,6}	5K7 5000K, 70 CRI	4F IES TYPE IV Forward	208 208V	DBT Dark Bronze Matte Textured
	48L-25 3,500 Lumens	3K8 3000K, 80 CRI	4W IES TYPE IV Wide	240 240V	DBS Dark Bronze Gloss Smooth
	48L-35 4,500 Lumens	4K8 4000K, 80 CRI		277 277V	GTT Graphite Matte Textured
	48L-45 5,500 Lumens ^{5,6}	5K8 5000K, 80 CRI		347 347V	LGS Light Grey Gloss Smooth
RWL2 Micro Strike Optics	160L-45 6,500 Lumens			480 480V	LGT Light Grey Matte Textured
	160L-50 7,500 Lumens				PSS Platinum Silver Smooth
	160L-65 9,500 Lumens				WHT White Matte Textured
	160L-80 11,000 Lumens				WHS White Gloss Smooth
	160L-95 13,000 Lumens				VGT Verde Green Textured
	160L-115 15,000 Lumens				Color Option
RWL2 Strike Optics	160L-135 17,500 Lumens				CC Custom Color
	160L-155 19,500 Lumens				
	36L-39 5,500 Lumens, Strike				
	36L-55 7,500 Lumens, Strike				
	36L-85 10,000 Lumens, Strike				
	36L-105 12,500 Lumens, Strike				
	36L-120 14,000 Lumens, Strike				



	Weight
RWL1	6.5 lbs / 2.95 kg
RWL2	16.5 lbs / 7.48 kg

