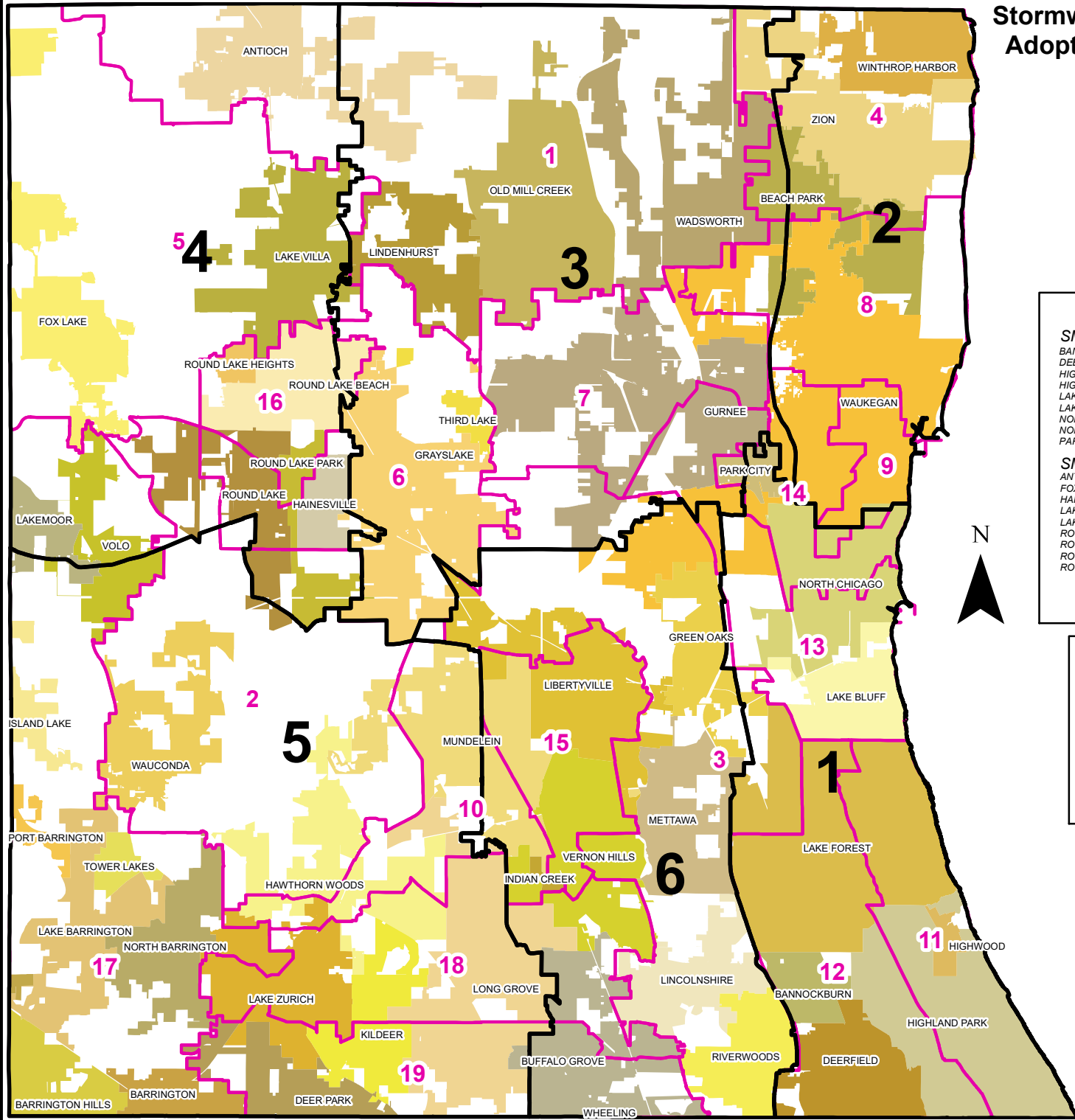


Stormwater Management Commission Adopted 2022 Representation Areas



County Board Districts

SMC Dist 1 CB Dist 11 CB Dist 12 CB Dist 13	SMC Dist 2 CB Dist 4 CB Dist 8 CB Dist 9 CB Dist 14	SMC Dist 3 CB Dist 1 CB Dist 6 CB Dist 7
SMC Dist 4 CB Dist 5 CB Dist 16	SMC Dist 5 CB Dist 2 CB Dist 10 CB Dist 17 CB Dist 18	SMC Dist 6 CB Dist 3 CB Dist 15 CB Dist 19

Municipalities

SMC Dist 1 BANNOCKBURN DEERFIELD HIGHLAND PARK HIGHWOOD LAKE BLUFF LAKE FOREST NORTH CHICAGO NORTHBROOK PARK CITY	SMC Dist 2 BEACH PARK WAUKEGAN WINTHROP HARBOR ZION	SMC Dist 3 GRAYS LAKE GURNEE LINDENHURST OLD MILL CREEK THIRD LAKE WADSWORTH
SMC Dist 4 ANTIOCH FOX LAKE HAINESVILLE LAKE VILLA LAKEMOOR ROUND LAKE ROUND LAKE BEACH ROUND LAKE HEIGHTS ROUND LAKE PARK	SMC Dist 5 ARLINGTON HEIGHTS BARRINGTON BARRINGTON HILLS DEER PARK FOX RIVER GROVE HAWTHORN WOODS ISLAND LAKE KILDEER LAKE BARRINGTON LAKE ZURICH LONG GROVE MUNDELEIN NORTH BARRINGTON PALATINE PORT BARRINGTON TOWER LAKES VOLO WAUCONDA	SMC Dist 6 BUFFALO GROVE GREEN OAKS INDIAN CREEK LIBERTYVILLE LINCOLNSHIRE METTAWA RIVERWOODS VERNON HILLS WHEELING

SMC Representation Area Population**

District	Population	Deviation
1	119,243	0.16%
2	118,835	-0.19%
3	118,537	-0.44%
4	119,315	0.22%
5	119,203	0.12%
6	119,209	0.13%

**2020 US Census

- 2022 Adopted SMC Representation
- Areas 2022 County Board Districts



STORMWATER MANAGEMENT COMMISSION

Lake County Stormwater Management Commission Courtesy Map. This map is provided for general locational information only. Map features have been derived from various sources, each of which has its own scale and accuracy. The locations of all features are approximate. This map should not be used to determine building set-backs or as a basis for purchasing property. Field Surveys and delineations are required to verify the exact locations of property lines and other map features.

*Lake County Stormwater Management Commission (LCSMC) DRAFT Representation Areas - April 28, 2022

DATA SOURCES: LCSMC and Lake County Department of Information And Technology, GIS & Mapping Division