



Former Lakes Region Sanitary District (LRSD) Assets – Overlap Discussion and Recommendation

Austin McFarlane

Director

Lake County Public Works

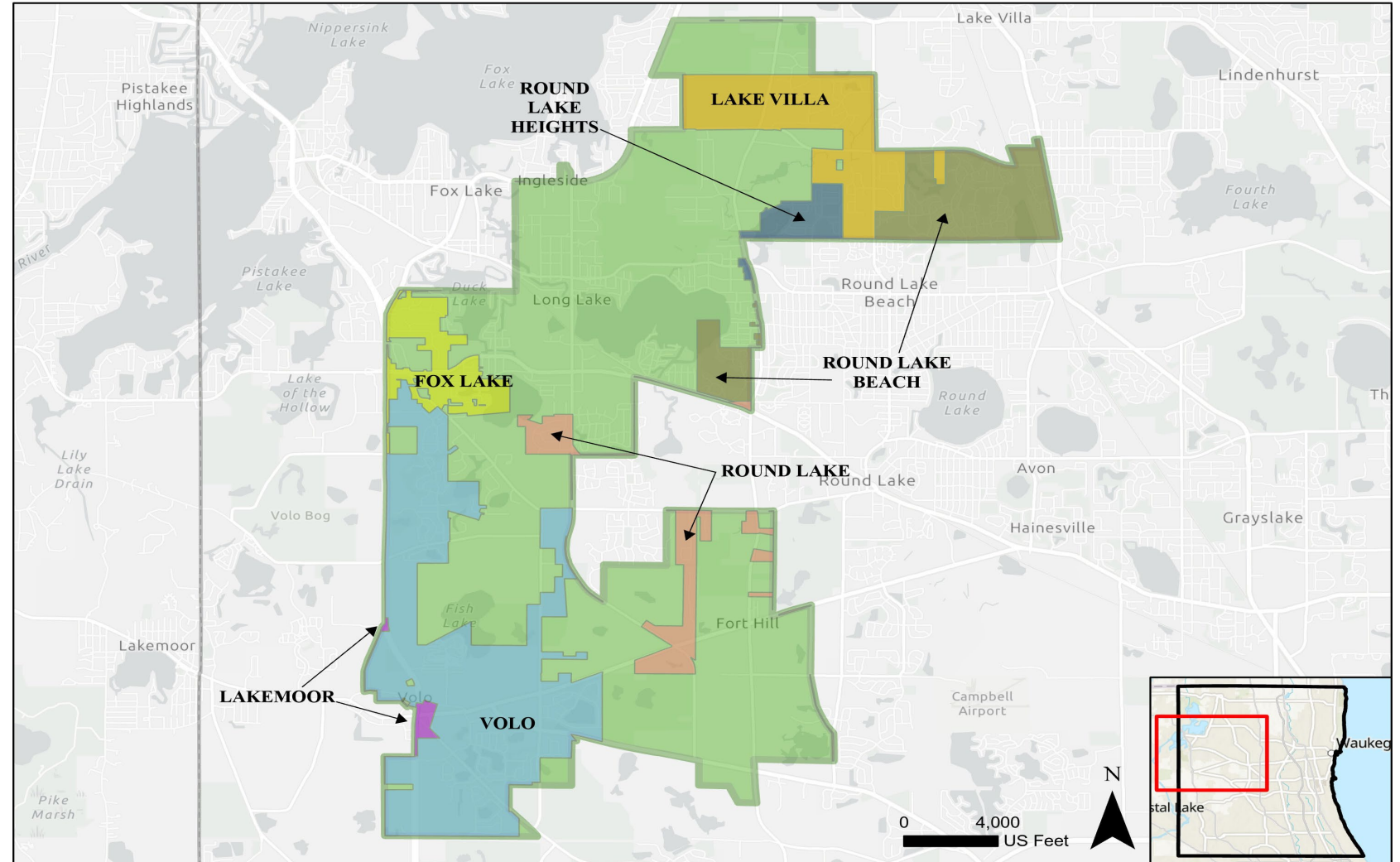
May 01, 2024

District Background

- The LRSD encompasses 17 square miles within the Northwest portion of Lake County
- It has 74 miles of gravity sewer, 2023 manholes, 8 miles of force main, and 20 Lift Stations.
- The district serves approximately 6200 customers.
- The map below shows the District's Facility Planning Area as well as the unincorporated municipalities within the district.

Incorporated
municipalities
within the LRSD
FPA:
Volo
Fox Lake
Lake Villa
Round Lake Beach
Round Lake
Round Lake Heights
Lakemoor

Title:
Lakes Region Sanitary District - Incorporated Areas

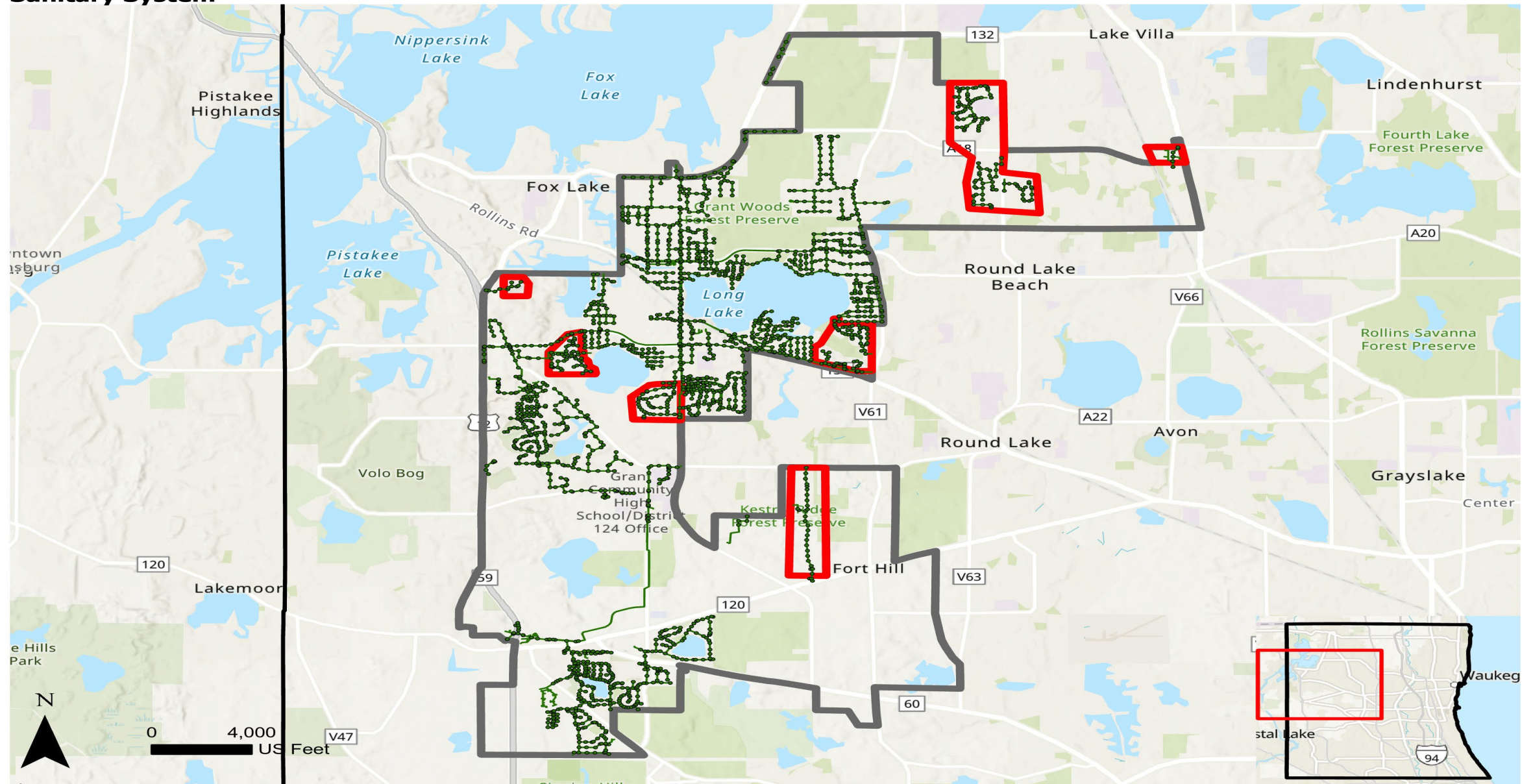


The Issue

- In 2019 the Restated and Amended Agreement with LRSD led to the dissolution of the district.
- During the dissolution discussions, potential opportunities for efficiencies and positive impacts to residents within the areas were identified. Potential opportunities included:
 - a) Can the billing for customers in the overlap areas be streamlined.
 - b) Is there an opportunity after the dissolution to offer better rates and service to customers.
 - c) Would it be beneficial to have the municipalities maintain their own local collection sewers in the overlap areas.
- An agreement was made amongst the involved parties that an opportunity for review would be provided following the formal dissolution of the district.

The Issue

- Areas of potential opportunity with assets are shown on the following map.
- The areas highlighted in red contain LRSD infrastructure within the incorporated municipalities:
 - ✓ Lake Villa: 21,500 feet of gravity sewer
 - ✓ Fox Lake: 13,400 feet of gravity sewer
 - ✓ Round Lake Beach: 11,000 feet of gravity sewer
 - ✓ Round Lake: 15,400 feet of gravity sewer



Potential Solution

- Staff prepared a policy that provides an opportunity to further address those topics. A Municipality that is interested would make a formal request.
- The policy includes some relevant criteria for the evaluation of each request as noted below:
 - 1) Financial impact to the County
 - 2) Financial impact to the Customer
 - 3) Benefits or efficiencies gained by the transfer
 - 4) Each request must be complete and timely
- This unique policy would be a single exception to our operations to address this matter.

Next Steps

- Seeking Committee's action on the Policy.
- Next Steps pending County Board approval:
 - a) Send Policy to Northwest Facility Planning Area Committees for their awareness.
 - b) Send Policy to impacted municipalities.



Questions?