

# Community Family Center

Building Today For A Strong Tomorrow

## Board of Directors

### Officers

*Herbert Wander, President*  
Attorney, Community Leader  
*Susan Ruder, 1<sup>st</sup> Vice President*  
United Way of HP/HW, Past President  
*Phillip Kurschner, 2<sup>nd</sup> Vice President*  
Vice President, Northern Trust Bank  
*Sari Montgomery, Secretary*  
Adjunct Professor of Law  
*Eric Ephraim, Treasurer*  
Managing Director, The PrivateBank

### Agency Representatives

*Jean Wallace-Baker, Director* Highland Park Community Nursery School and Day Care Center  
*Pamela Feinberg, Director* Tri-Con Child Care Center  
*Jordan Friedman, Director* Family Network  
*Robert Wolf, Director* Family Service: Prevention, Education, & Counseling, NPO  
*Jane Talesnick, Coordinator* HP/HW Home Child Care Assoc.

### Community Representatives

*Robert Baizer, Baizer Kolar & Lewis, P.C.*  
*P. Bryn Benson, Human Relations Com.* HP  
*Tony Blumberg, Former, HP Plan Com.*  
*Jane Boutet, Past President, Tri-Con*  
*Gail Feiger Brown, United Way-W/C*  
*Katie Cohen, Community Volunteer*  
*Janet Freed, Welfare Council HP/HW*  
*Maureen Hager, Past, Superint. NSSD 112*  
*Edith Kaye, Emeritus, United Way*  
*William Kaufman, Past CFC Vice President*  
*Emily Matz, IT Specialist*  
*Claribel Puello, Community Volunteer*  
*Victoria Ratnaswamy, Past CFC Ex Director*  
*Jane Rich, Board President, Tri-Con*  
*Donald Schindel, Past Pres., United Way*  
*Jane Shapira, HP Community Foundation*  
*Marilyn Straus, Emeritus, Ravinia Nursery*  
*Karen Wander, Community Volunteer*  
*Roberta Wexler, Coordinator of JUF Right Start Program*

### Ex Officio

*Anne Flanigan Bassi, Lake County Board*  
*David Behlow, Superintendent NSSD 112*  
*Susan Garrett, State Senator, Dist 29*  
*Ellen Gussin, Clerk, Moraine Township*  
*Greg Kurr, NSSD 112*  
*Karen May, State Representative, Dist 58*  
*Liza McElroy, Highland Park Park District*  
*Nancy Rotering, Highland Park City Council*

### Honorary Board

*Barbara T. Bowman, Co-founder, Erickson Institute*  
*Jane Colman, Community Volunteer*  
*Dolores Kohl Kaplan, Founder, Kohl Children's Museum*  
*Bernice Weissbourd, Founder, Family Focus*

### Administration

*Andrea Kressmann, Executive Director*  
*Barbara Haley, Associate Director*

HERBERT S. WANDER  
Katten Muchin Rosenman LLP  
525 West Monroe Street  
Chicago, IL 60661  
hwander@kattenlaw.com  
312.902.5267 direct 312.577.8885 fax

April 29, 2010

Mr. Michael Blue  
Director of Community Development  
City of Highland Park  
1150 Half Day Road  
Highland Park, IL 60035

Re: Report on Status of Lake County Remediation Grant

Dear Michael:

The Community Family Center, Inc. ("CFC") is pleased to provide you and Lake County with this status report on the Lake County Remediation Grant to the Karger Center in Downtown Highland Park, Illinois.

- CFC's architects, Holabird & Root, have completed preliminary architectural drawings for the Karger Center renovation.
- CFC's environmental consultant has completed Phase I environmental analysis, a hazardous materials survey and an asbestos abatement at a cost of approximately \$10,000. At this time, we do not anticipate any change in the cost of remediation from the grant application.
- CFC is heavily engaged in the process of raising the funds necessary to construct the remodeling of the Karger Center.
- CFC has asked its professional advisors to prepare a time schedule for the entire project – a copy of which is attached. If the CFC were to start project development on May 1, 2010, as indicated on the time schedule, the environmental remediation would take place in April, 2011.
- CFC, however, cannot start the remediation while the building is still being used by the Highland Park Community Nursery School Day Care Center ("HP Day Care Center") because of the health hazard the remediation would cause the staff and children. The bottom portion of the time schedule reflects the time schedule to relocate HP Day Care Center during the construction process. You will note that the environmental remediation

would take place as soon as HP Day Care Center moves out of the Karger Center.

- Fundraising for the project has been slower than anticipated, in large part caused by the poor economy.
- As a result of the foregoing, CFC will not commence project development until it is assured of having the necessary funds to complete the project. It is impossible to forecast when that will be but CFC is hopeful that by the Fall or early Winter of 2010, it will be in a position to commence project development. If this happens, the environmental remediation would take place in the immediate initial phase thereafter.

If you have any questions or need any additional information, please let me know.

Many thanks for your continued cooperation.

Best regards, Herb

Very truly yours,



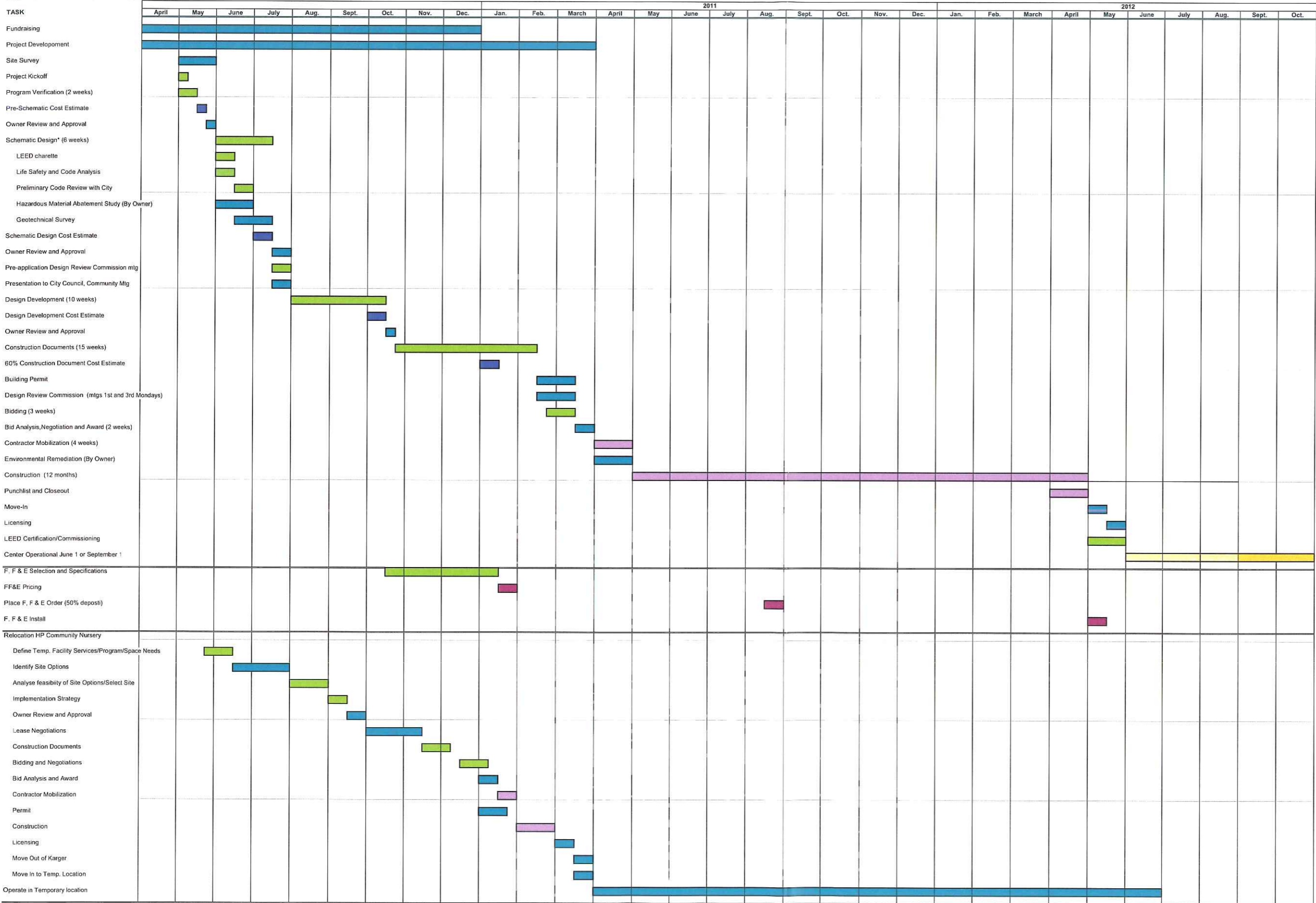
Herbert S. Wander  
President

HSW:tlc60801975

Enclosure

cc w/enc.: Anne Bassi  
Andrea Kressman  
Ja'Net DeFell

Community Family Center  
Preliminary Project Schedule  
Holabird & Root  
April 6, 2010  
**REVISED DRAFT SCHEDULE**



Owner/Development Consultant  
Holabird & Root  
CM or Cost Consultant  
General Contractor

\*Assumes current schematic approach does.