



LAKE COUNTY
Investing in People
and Our Communities

Public Works 2019 Workplan

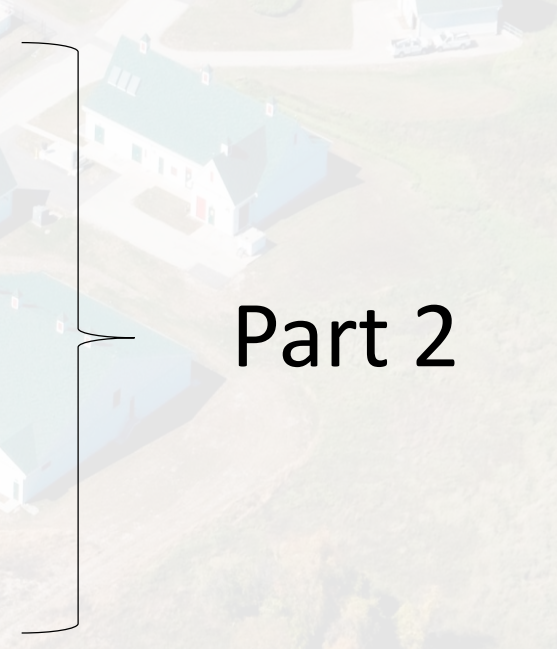
May 1, 2019

Overview

- 2018 Workplan Recap
 - Life cycle analysis example – wells
- System overview
- 2019 Workplan
 - Lakes Region Sanitary District
 - Sludge dryer
 - Utility billing software implementation
 - Inventory management
 - Workload balancing
 - Establish standing committees

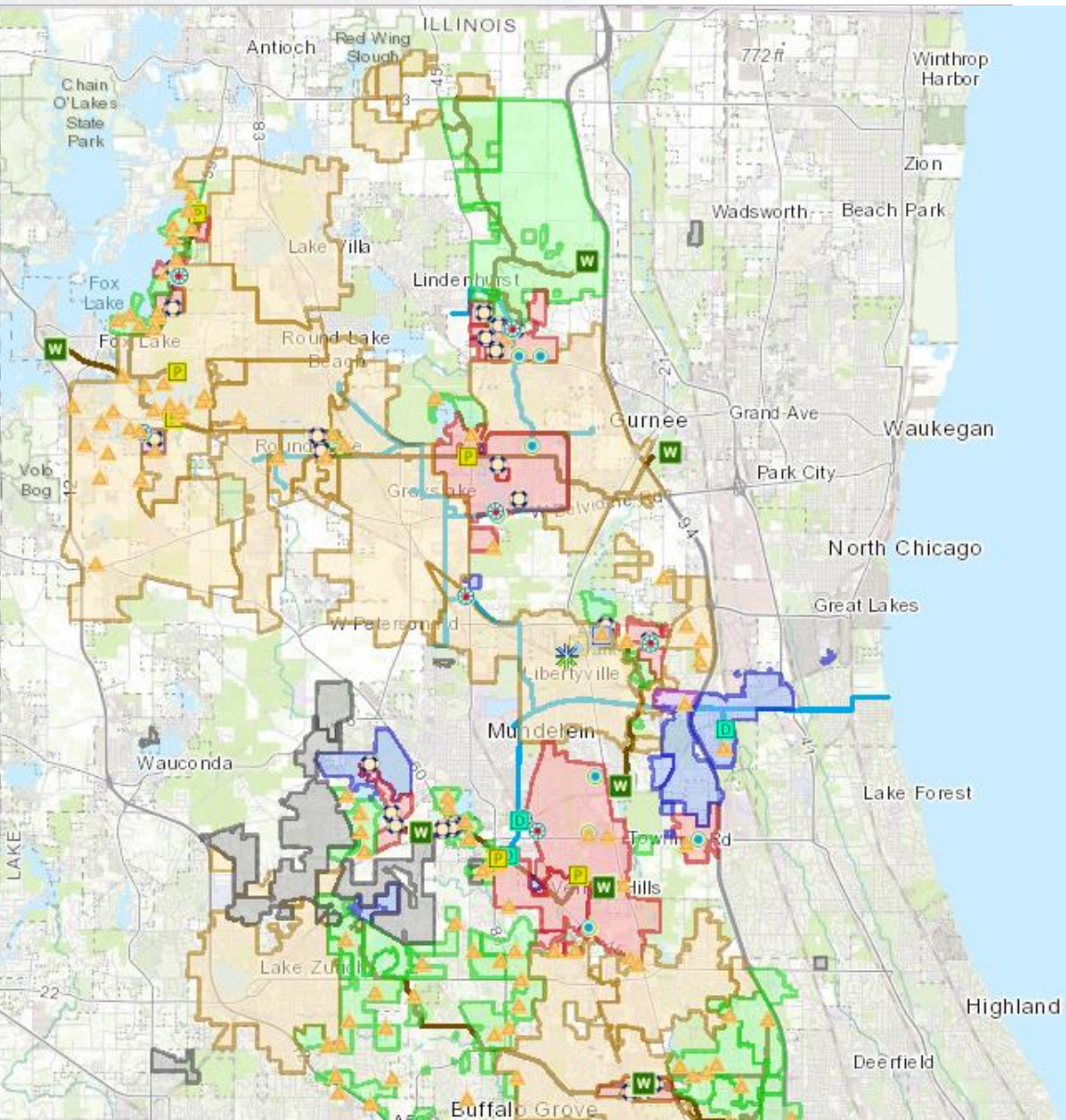


Part 1



Part 2

Who We Serve



A network of service providers

19 Support Agreements

300,000 Wholesale Customers

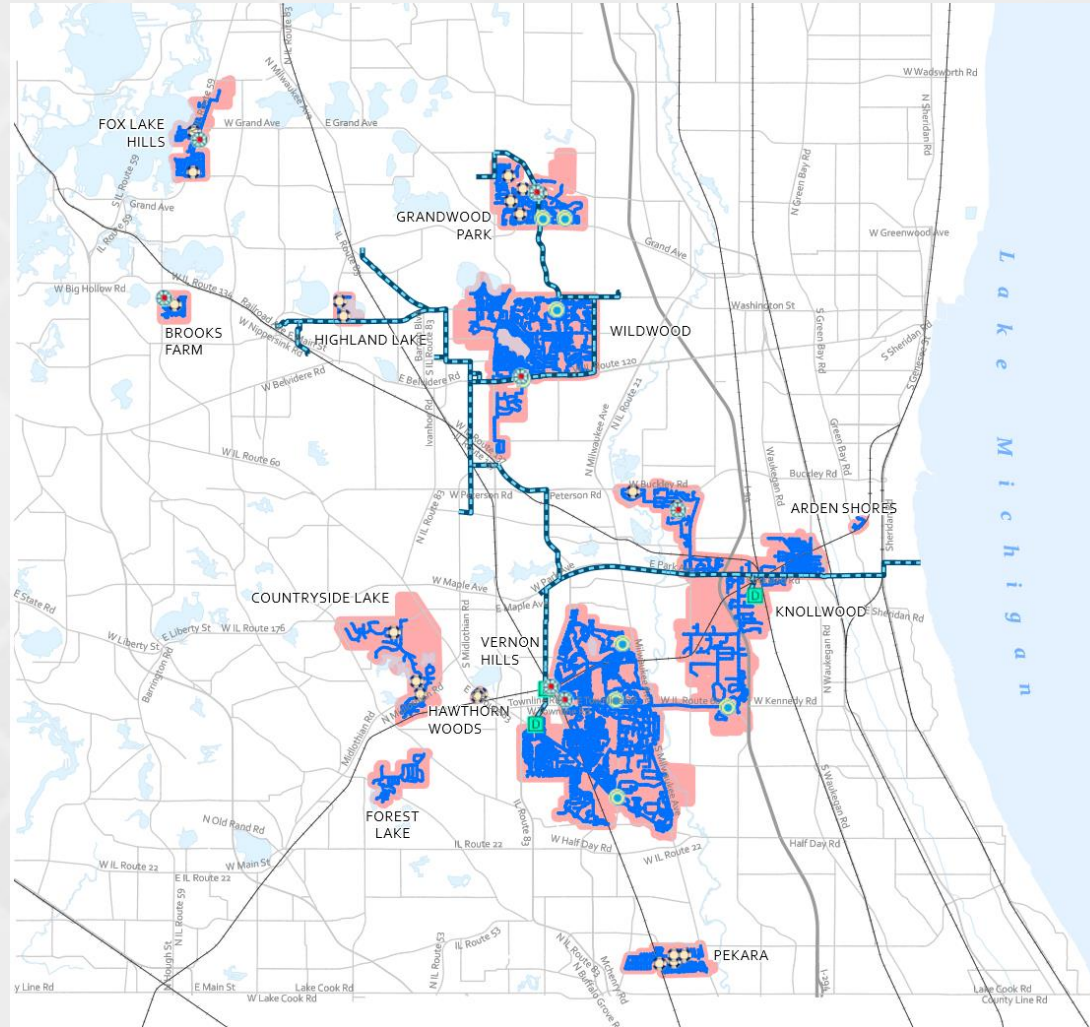
27,000 + 6,000 (LRSD) Customers

40% of the County's population

Water Systems

12 Water Systems

- 8 water towers
- 10 reservoirs
- 292 miles of water main
- 3,740 fire hydrants

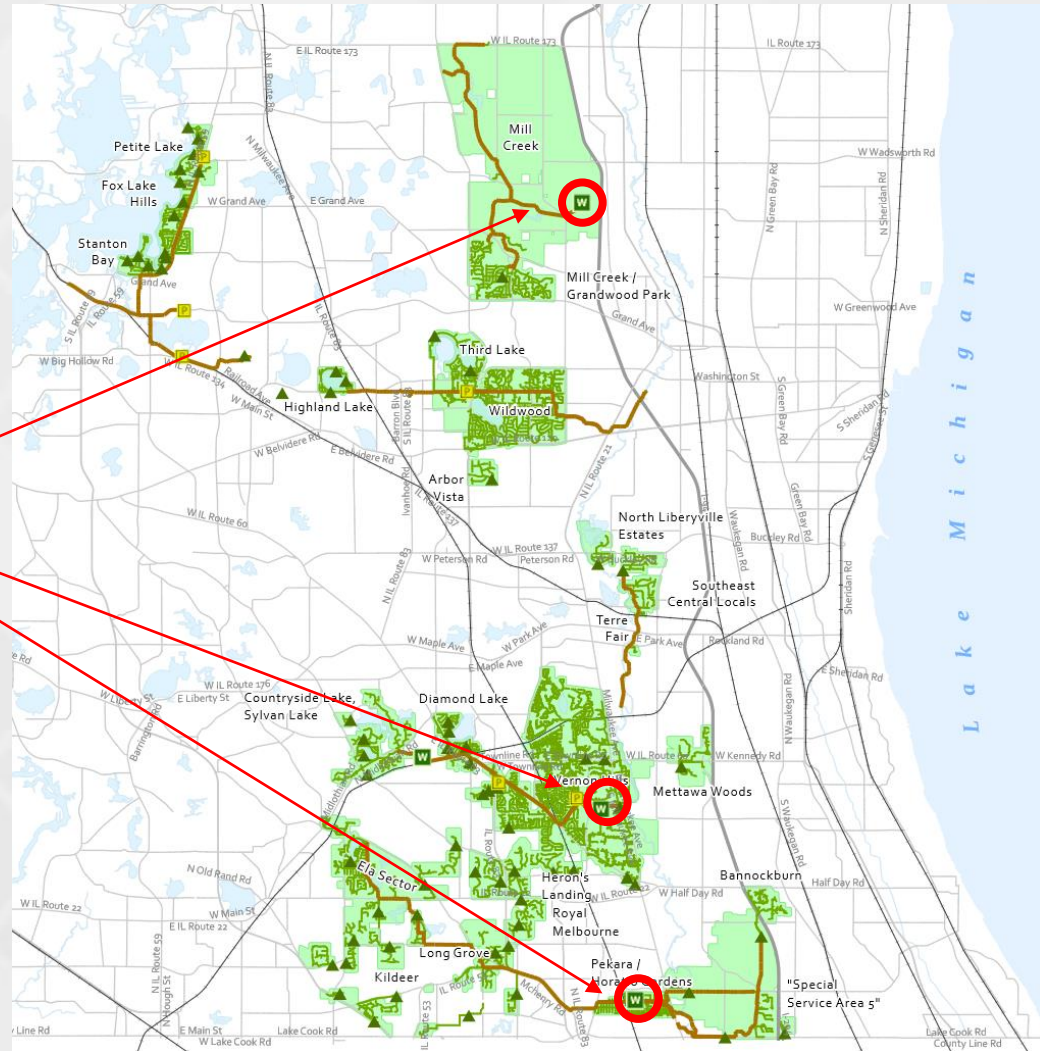


Sanitary Sewer Systems

7 Sanitary Sewer Systems

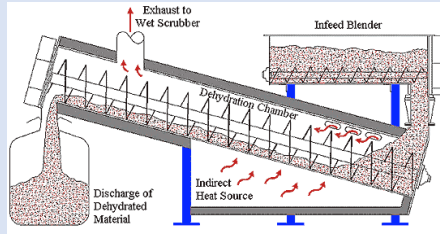
- 368 miles of sewer pipe
- 66 lift stations
- 5 regional interceptors

3 Treatment Facilities



2019 Workplan

Coming on line



Sludge Dryer



3 Committees

- CIP Implementation
- Employee Engagement
- Technology

Taking care of our people

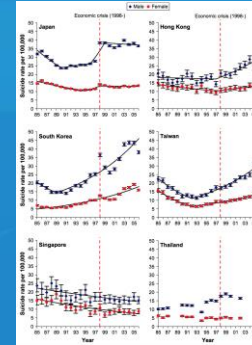


Safety First

- No lost time incidents

Under Development

Workload Analysis



5-year Rate Study



Lakes Region Sanitary District
Merger December 2019

Billing Software Upgrade





Building on success

Executing the plan

Always improving

