

Watershed Development Ordinance Proposed Amendments

Planning, Building, Zoning & Environment Committee
June 7, 2023



STORMWATER MANAGEMENT COMMISSION

Brian Frank, Chief Engineer
Kelcey Traynoff, Regulatory Supervisor



Lake County SMC's Regulatory Program

WDO first adopted October 18, 1992

Establish consistent, uniform, minimum county-wide requirements for new development.

Seek balanced input from:

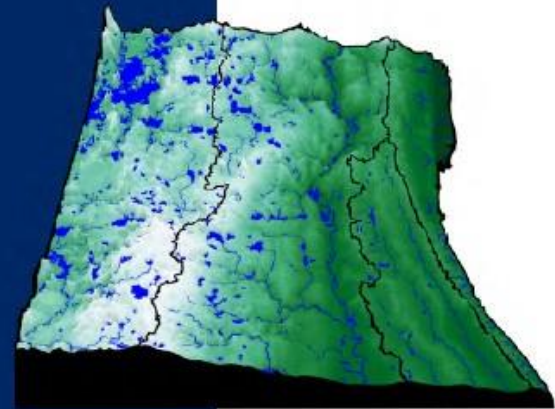
- Governmental agencies
- Municipalities
- Environmental
- Property owners and developers

Done in a public forum.

WATERSHED

DEVELOPMENT

ORDINANCE



Lake County
Stormwater Management Commission
October 13, 2020



STORMWATER MANAGEMENT COMMISSION

Amendments History

There are several influences that necessitate revisions to the WDO:

- 1) FEMA/IDNR Mandates – National Flood Insurance Program Updates
- 2) USEPA/IEPA Mandates – Soil Erosion/Sediment Control – Water Quality Issues – NPDES
- 3) Illinois Compiled Statute Mandates – Statutory Changes (Legal)
- 4) USACE/IEPA/IDNR Mandates – Wetland Issues
- 5) Lake County/NE IL Inter/Intra-Countywide Issues

The timeline is usually about 5 years between major ordinance changes, summarized as follows:

October 18, 1992	ORIGINAL EFFECTIVE DATE
August 10, 1999	First major update
August 14, 2001	Added Isolated Wetland Section
January 10, 2006	Second overall update
July 10, 2012	Third overall update
October 13, 2015	Fourth update including re-formatting
October 13, 2020	Update including increased rainfall
July 11, 2023	Proposed update including FEMA maps

Amendment Process

Official Approving Entities

- ✓ **Technical Advisory Committee – Started February 2023**
- ✓ **Municipal Advisory Committee – brief update**
- ✓ **Stormwater Management Commission**
- ✓ **Planning, Building, Zoning & Environment Committee**
- ✓ **County Board**
- ✓ **Adopting Communities**

Amendment Process, Cont'd

Reviewing Entities

- ✓ **The Public!**
- ✓ **Our Customers!**
- ✓ **Peer Government Agencies (Communities, other Federal, State and Local units)**

Amendment Process, Cont'd

Official Commenting Entities

- ✓ **Illinois Department of Natural Resources/Office of Water Resources**
- ✓ **Federal (FEMA and U.S. Army Corps of Engineers)**
- ✓ **Adjoining Illinois Metro Counties (McHenry)**
- ✓ **Legal Review**

Amendment Process, Cont'd

Public Comment

- ✓ **All comments received are reviewed and discussed**
- ✓ **Official Comment Period**
- ✓ **Ongoing Comments During Process**
- ✓ **Staff generates responses and amendment options are recommended to SMC**

Proposed Amendment Schedule

Anticipated Schedule	Date	Comment
FEMA issues new maps	W 4/5/2023	Communities required to adopt new FEMA maps within six months (10/5/2023).
SMC Meeting	Th 4/6/2023	Provide update that the FEMA maps have been released.
Municipal Advisory Committee (MAC) Meeting	W 4/12/2023	Staff presentation and discussion of pending WDO amendments including maps.
Technical Advisory Committee (TAC) Meeting	Th 4/20/2023	Go over WDO amendments and newly issued FIRM panels. Open 30-day public comment period for WDO amendments, soon after.
Open 30-day public comment period	M 5/1/2023	Issue public notice of WDO Amendments and May 25, 2023, Public Hearing.
SMC Meeting and Legal Review	Th 5/4/2023	Introduction of WDO amendments and ratify public comment period.
Public Hearing for WDO Amendments	Th 5/25/2023	Presentations and discussion on WDO amendments, Q&A. [Waukegan 10 th floor]
SMC Meeting and Legal Review	Th 6/1/2023	Summary of public comments and approval of WDO amendments.
PBZ&E Meeting	W 6/7/2023	Introduction of WDO amendments.
PBZ&E Meeting	W 6/28/2023	Approval of WDO amendments.
County Board WDO 2023 Adoption	Tu 7/11/2023	Final approval of WDO amendments.
Final Ordinance Packet Mailout by SMC	W 7/12/2023	Community adoption procedures in progress July 2023 through September 2023 (FEMA deadline: October 5, 2023).



Proposed Amendment Categories

Amendment Categories Include:	Amendment #'s
Coastal High Hazard Area (CHHA)	1a, 1b, 1c, 1d, 1e, 1f, 1g, 1i, 1j, 1k
Wetlands	2a, 2b, 2c, 2d, 2e, 2f, 2g, 2h, 2i
Administrative	3a, 3b, 3c, 3g, 3h, 3i, 3j, 3k
Floodplain	4a, 4b, 4c
DECI	5a, 5b
FEMA Maps	6a
Floodway Storage	2 (2021)
Rainfall Table	3 (2021)
Total # of Amendments	35

ATTENTION: The corporate limits shown on this FIRM index are based on the best information available at the time of publication. As such, they may be more current than those shown on FIRM panels issued before October 5, 2023.

LAKE COUNTY UNINCORPORATED AREAS
0010K 9/18/2013
0020K 9/18/2013
0030K 9/18/2013
0040K 9/18/2013
0050K 9/18/2013
0060K 9/18/2013
0070K 9/18/2013
0080K 9/18/2013
0090K 9/18/2013
0100K 9/18/2013
0110K 9/18/2013
0120K 9/18/2013
0130K 9/18/2013
0140K 9/18/2013
0150K 9/18/2013
0160K 9/18/2013
0170K 9/18/2013
0180K 9/18/2013
0190K 9/18/2013
0200K 9/18/2013
0210K 9/18/2013
0220K 9/18/2013
0230K 9/18/2013
0240K 9/18/2013
0250K 9/18/2013
0260K 9/18/2013
0270K 9/18/2013
0280K 9/18/2013
0290K 9/18/2013
0300K 9/18/2013
0310K 9/18/2013
0320K 9/18/2013
0330K 9/18/2013
0340K 9/18/2013
0350K 9/18/2013
0360K 9/18/2013
0370K 9/18/2013
0380K 9/18/2013
0390K 9/18/2013
0400K 9/18/2013
0410K 9/18/2013
0420K 9/18/2013
0430K 9/18/2013
0440K 9/18/2013
0450K 9/18/2013
0460K 9/18/2013
0470K 9/18/2013
0480K 9/18/2013
0490K 9/18/2013
0500K 9/18/2013
0510K 9/18/2013
0520K 9/18/2013
0530K 9/18/2013
0540K 9/18/2013
0550K 9/18/2013
0560K 9/18/2013
0570K 9/18/2013
0580K 9/18/2013
0590K 9/18/2013
0600K 9/18/2013
0610K 9/18/2013
0620K 9/18/2013
0630K 9/18/2013
0640K 9/18/2013
0650K 9/18/2013
0660K 9/18/2013
0670K 9/18/2013
0680K 9/18/2013
0690K 9/18/2013
0700K 9/18/2013
0710K 9/18/2013
0720K 9/18/2013
0730K 9/18/2013
0740K 9/18/2013
0750K 9/18/2013
0760K 9/18/2013
0770K 9/18/2013
0780K 9/18/2013
0790K 9/18/2013
0800K 9/18/2013
0810K 9/18/2013
0820K 9/18/2013
0830K 9/18/2013
0840K 9/18/2013
0850K 9/18/2013
0860K 9/18/2013
0870K 9/18/2013
0880K 9/18/2013
0890K 9/18/2013
0900K 9/18/2013
0910K 9/18/2013
0920K 9/18/2013
0930K 9/18/2013
0940K 9/18/2013
0950K 9/18/2013
0960K 9/18/2013
0970K 9/18/2013
0980K 9/18/2013
0990K 9/18/2013
1000K 9/18/2013
1010K 9/18/2013
1020K 9/18/2013
1030K 9/18/2013
1040K 9/18/2013
1050K 9/18/2013
1060K 9/18/2013
1070K 9/18/2013
1080K 9/18/2013
1090K 9/18/2013
1100K 9/18/2013
1110K 9/18/2013
1120K 9/18/2013
1130K 9/18/2013
1140K 9/18/2013
1150K 9/18/2013
1160K 9/18/2013
1170K 9/18/2013
1180K 9/18/2013
1190K 9/18/2013
1200K 9/18/2013
1210K 9/18/2013
1220K 9/18/2013
1230K 9/18/2013
1240K 9/18/2013
1250K 9/18/2013
1260K 9/18/2013
1270K 9/18/2013
1280K 9/18/2013
1290K 9/18/2013
1300K 9/18/2013
1310K 9/18/2013
1320K 9/18/2013
1330K 9/18/2013
1340K 9/18/2013
1350K 9/18/2013
1360K 9/18/2013
1370K 9/18/2013
1380K 9/18/2013
1390K 9/18/2013
1400K 9/18/2013
1410K 9/18/2013
1420K 9/18/2013
1430K 9/18/2013
1440K 9/18/2013
1450K 9/18/2013
1460K 9/18/2013
1470K 9/18/2013
1480K 9/18/2013
1490K 9/18/2013
1500K 9/18/2013
1510K 9/18/2013
1520K 9/18/2013
1530K 9/18/2013
1540K 9/18/2013
1550K 9/18/2013
1560K 9/18/2013
1570K 9/18/2013
1580K 9/18/2013
1590K 9/18/2013
1600K 9/18/2013
1610K 9/18/2013
1620K 9/18/2013
1630K 9/18/2013
1640K 9/18/2013
1650K 9/18/2013
1660K 9/18/2013
1670K 9/18/2013
1680K 9/18/2013
1690K 9/18/2013
1700K 9/18/2013
1710K 9/18/2013
1720K 9/18/2013
1730K 9/18/2013
1740K 9/18/2013
1750K 9/18/2013
1760K 9/18/2013
1770K 9/18/2013
1780K 9/18/2013
1790K 9/18/2013
1800K 9/18/2013
1810K 9/18/2013
1820K 9/18/2013
1830K 9/18/2013
1840K 9/18/2013
1850K 9/18/2013
1860K 9/18/2013
1870K 9/18/2013
1880K 9/18/2013
1890K 9/18/2013
1900K 9/18/2013
1910K 9/18/2013
1920K 9/18/2013
1930K 9/18/2013
1940K 9/18/2013
1950K 9/18/2013
1960K 9/18/2013
1970K 9/18/2013
1980K 9/18/2013
1990K 9/18/2013
2000K 9/18/2013
2010K 9/18/2013
2020K 9/18/2013
2030K 9/18/2013
2040K 9/18/2013
2050K 9/18/2013
2060K 9/18/2013
2070K 9/18/2013
2080K 9/18/2013
2090K 9/18/2013
2100K 9/18/2013
2110K 9/18/2013
2120K 9/18/2013
2130K 9/18/2013
2140K 9/18/2013
2150K 9/18/2013
2160K 9/18/2013
2170K 9/18/2013
2180K 9/18/2013
2190K 9/18/2013
2200K 9/18/2013
2210K 9/18/2013
2220K 9/18/2013
2230K 9/18/2013
2240K 9/18/2013
2250K 9/18/2013
2260K 9/18/2013
2270K 9/18/2013
2280K 9/18/2013
2290K 9/18/2013
2300K 9/18/2013
2310K 9/18/2013
2320K 9/18/2013
2330K 9/18/2013
2340K 9/18/2013
2350K 9/18/2013
2360K 9/18/2013
2370K

Coastal High Hazard Areas (V-Zones)

Figure 6a: Coastal Transect Schematic (Wave Runup and Overtopping)

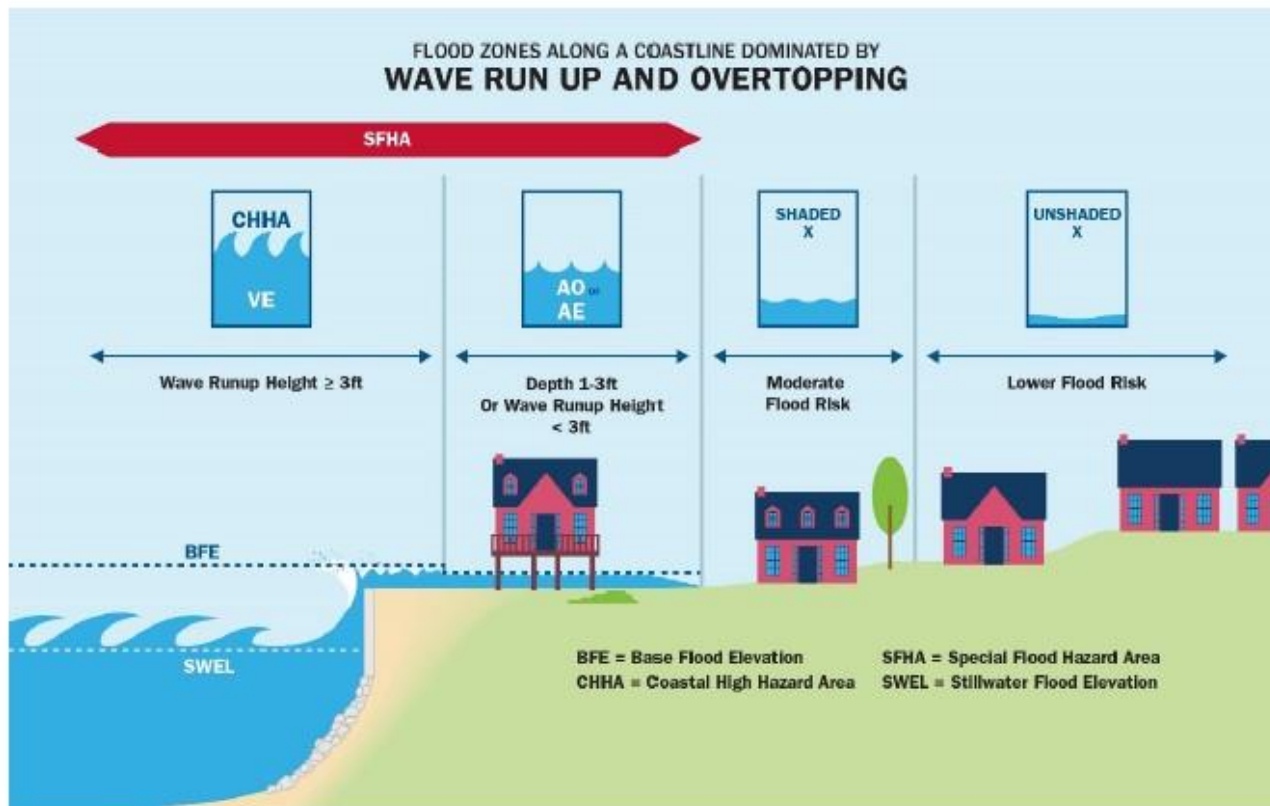
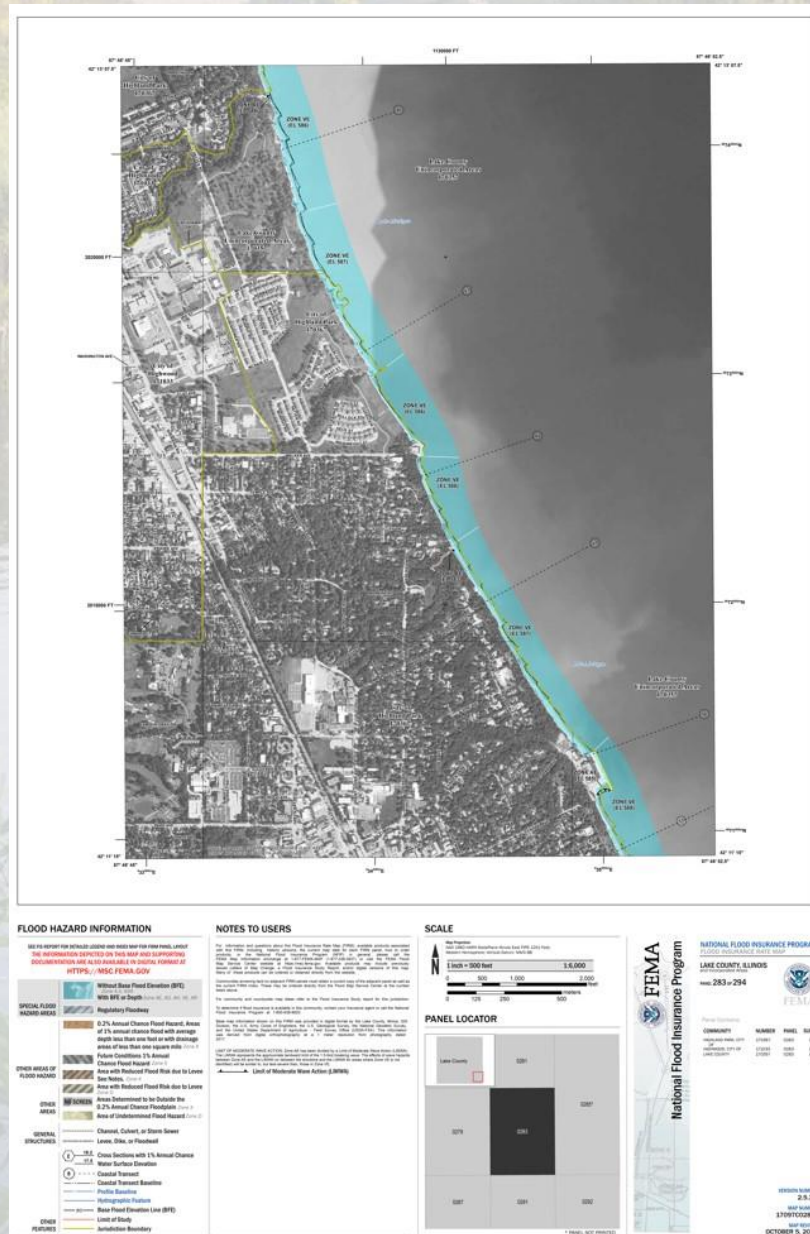


Figure 6b, "Coastal Transect Schematic (Overland Wave Propagation)," illustrates the relationship between the base flood elevation, the 1-percent-annual-chance stillwater elevation, and the ground profile as well as the location of the Zone VE and Zone AE in areas subject to overland wave propagation. This figure also illustrates energy dissipation and regeneration of a wave as it moves inland.

FEMA – Flood Insurance Rate Map (FIRM)



DISCUSSION: Proposed WDO Amendments

Refer to Proposed 2023 WDO Amendment attachment

Amendment Categories Include:	Amendment #'s
Coastal High Hazard Area (CHHA)	1a, 1b, 1c, 1d, 1e, 1f, 1g, 1i, 1j, 1k
Wetlands	2a, 2b, 2c, 2d, 2e, 2f, 2g, 2h, 2i
Administrative	3a, 3b, 3c, 3g, 3h, 3i, 3j, 3k
Floodplain	4a, 4b, 4c
DECI	5a, 5b
FEMA Maps	6a
Floodway Storage	2 (2021)
Rainfall Table	3 (2021)
Total # of Amendments	35

Questions?