



# **Department Update to Standing Committee**

**Jennifer Banek MS, CRNA**  
**Lake County Coroner**

**Tuesday, April 4, 2023**

# Department Overview

## Lake County Coroner

---



- **Determination of Cause and Manner of Death**
  - **Covers entire county**
  - **Scene investigations, forensic examination and toxicology**
  - **Identify, communicate, and educate about preventable death trends**
- **Administrative Functions**
  - **Certification of death on Coroner Cases**
  - **Cremation permits for any death that occurs in Lake County**
  - **Case file management and record keeping**
- **Family Support**
  - **Assist family member throughout process**

# Department Overview

## Lake County Coroner

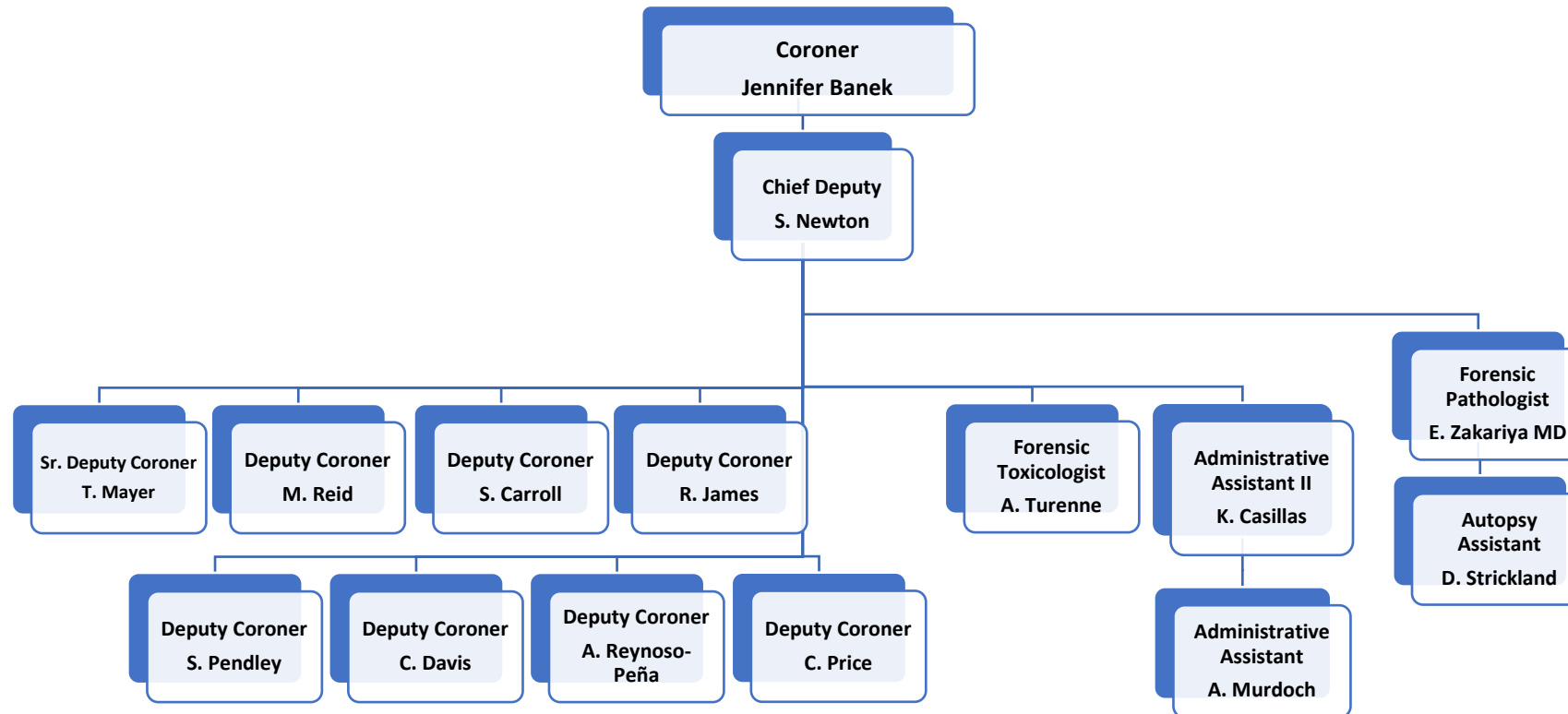


- **Staffing**
- **Administration/Investigations**
  - **Coroner**
  - **Chief Deputy**
  - **8 Deputy Coroners/Investigators**
  - **2 Administrative Staff**
- **Examination**
  - **Forensic Pathologist, Pathology Assistant**
  - **Toxicologist**



# Department Overview

## Lake County Coroner

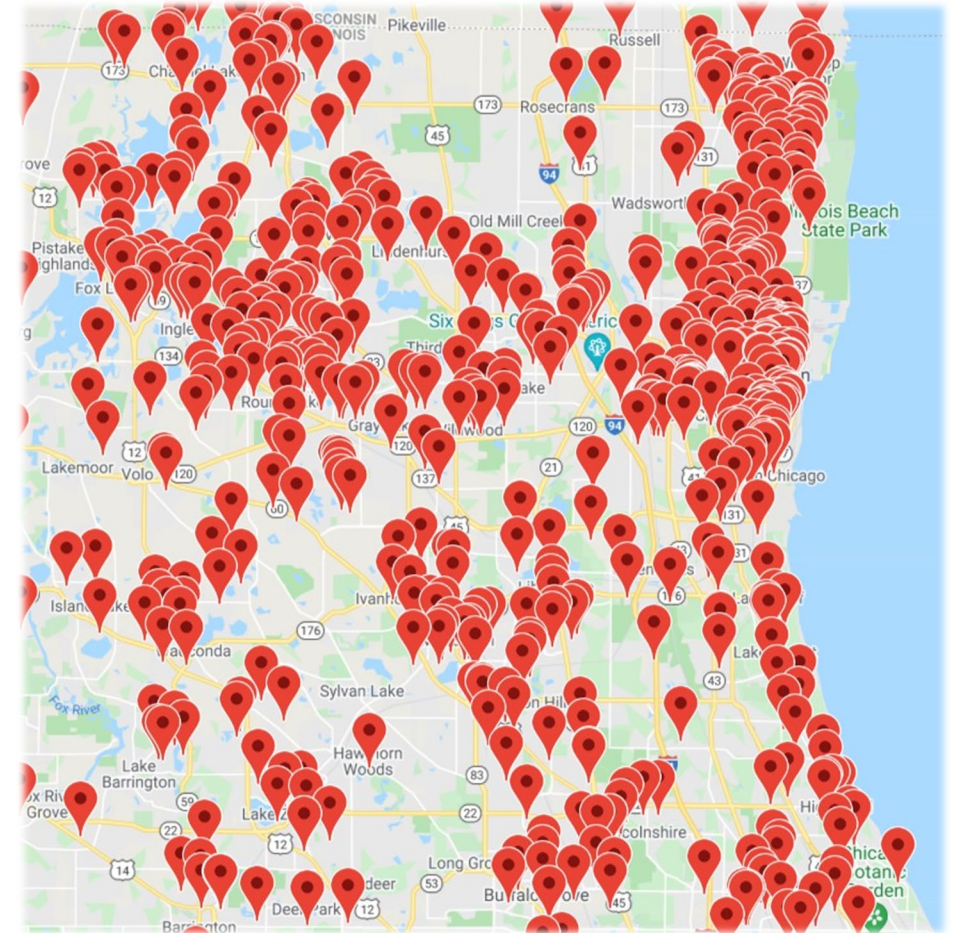


# Department Overview

## Lake County Coroner



- **Departmental Statistics 2022**
  - **5,752 Total Deaths Reported**
  - **671 required further investigation**
  - **601 required further examination**
- **Average Coroner Case 84/yr./Deputy** <sup>(7)</sup>
- **Average Medical Case 719/yr./Deputy** <sup>(7)</sup>
- **2021 Comparison**
  - **5,530 Total Deaths Reported**
  - **669 required further investigation**
  - **606 required further examination**





# Strategic Alignment

## 2019 Strategic Plan



**County's Mission: Deliver exceptional, financially and environmentally responsive / responsible services that promote a safe, affordable, healthy, and resilient community**

Strategic Initiatives	
X	Regional Leadership
X	Fiscal Responsibility
X	Exceptional Service and Operational Excellence
Strategic Goals	
X	Public Safety and Integrated, Data-Driven Justice System
X	Enhance Economic Opportunities
	Improve Infrastructure
	Promote a Sustainable Environment
X	Build Healthy, Inclusive, and Resilient Communities

Strategic Themes	
X	Inter-Organizational Cooperation
X	Quality of Life
	Economic Development
	Infrastructure
	Environmental Sustainability
X	Non-Environmental Sustainability
X	Lake County Branding
X	Mental Health
X	Grants and Specialty Funding
X	Diversity and Inclusion

# Previous 12 Months

- Address mortality issues – Suicide and Overdoses
  - Continued collaboration with partner organizations
  - Provide transparent, timely and accurate statistical data
  - Identify and provide for needs of Families
    - *Resources/Support, Missing Pieces*
  - Identified new organizations to form partnerships for at risk population
- Increase educational opportunities
  - School, organization and group tours
  - Classroom lectures on forensic related topics



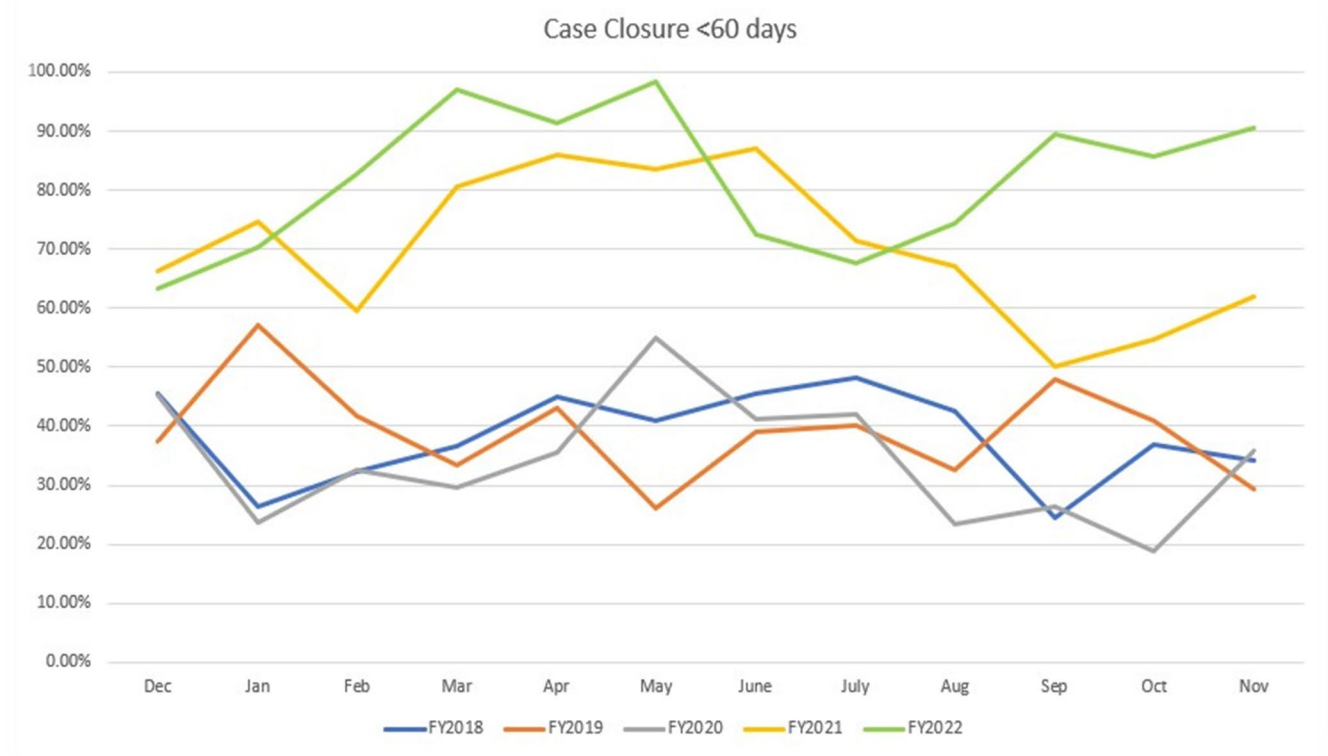
# Previous 12 Months

- **Staff**
  - Encouraged continued professional training
  - Hired 2 Deputy Coroner positions from staff already within the office
  - Continued to improve office accountability and transparency
  - Continued managerial case review procedures
- **Expenditure Accountability**
  - Implemented procedures to track spending and costs
  - Evaluate purchasing sources for best costs
  - Continued reduction in overtime expenditure



# Previous 12 Months

- Case Closure Rates
  - Continued procedures and effective supervision practices to reduce delay in closing of cases
  - Monthly reports
  - Less delay for families



# Next 12 Months

- **Community Involvement**
  - **Identify and collaborate additional partner organizations to provide increased services and resources for grieving families**
  - **Provide additional timely data to drive resources where needed**
  - **Finalize the implementation of a County Ecumenical Indigent Burial Program**
- **Evaluate expenditures/contracts**
  - **Continue to ensure Coroner contract services are fiscally responsible**
  - **Continue to explore potential revenue generating lab services**
  - **Research grant funding for future equipment**

# Next 12 Months

- Continue staff development and accountability
  - Maintain staff accreditation through American Board of Medicolegal Death Investigators
- Maintain 60-day case closure rate to minimum 80%
  - *FY2018 – 38.43%*
  - *FY2019 – 38.92%*
  - *Increased to 69.29% in FY2021 over 33.98% in FY2020.*
  - *Increased to 80.83% in FY2022! 83.45% Calendar Year*



**Questions**