

ECONOMIC DEVELOPMENT UPDATE

**LAKE COUNTY PARTNERS
APRIL 2026**



2026 IN-PROGRESS INVESTMENTS

Life Sciences

- AbbVie Pharmaceuticals (North Chicago)

Manufacturing

- Ludlow Manufacturing (Waukegan)
- Lindemann Chimney (Lake Bluff)
- Bath Concepts (Libertyville)

37 Active Projects in Pipeline

17 New Project Considered in Q1*

The logo for AbbVie, featuring the word "abbvie" in a lowercase, blue, sans-serif font.The logo for Ludlow Manufacturing, featuring a stylized "LM" in orange and grey, followed by the words "LUDLOW" and "MANUFACTURING" in a bold, black, sans-serif font.The logo for Lindemann Chimney & Fireplace, featuring the word "LINDEMANN" in a large, white, serif font inside a dark red banner, with "CHIMNEY & FIREPLACE • HEATING & COOLING" in a smaller, white, sans-serif font below it.The logo for Bath Concepts, featuring a blue diamond shape containing a stylized "B", followed by the words "BATH" and "CONCEPTS" in a blue, sans-serif font.

FIVE YEAR METRICS

	2022	2023	2024	2025	2026*
New Jobs	419	741	541	1,862	455
Retained Jobs	112	512	667	1,333	600
Direct Investment	\$202 M	\$610 M	\$251 M	\$633 M	\$483 M

5-YR TOTAL

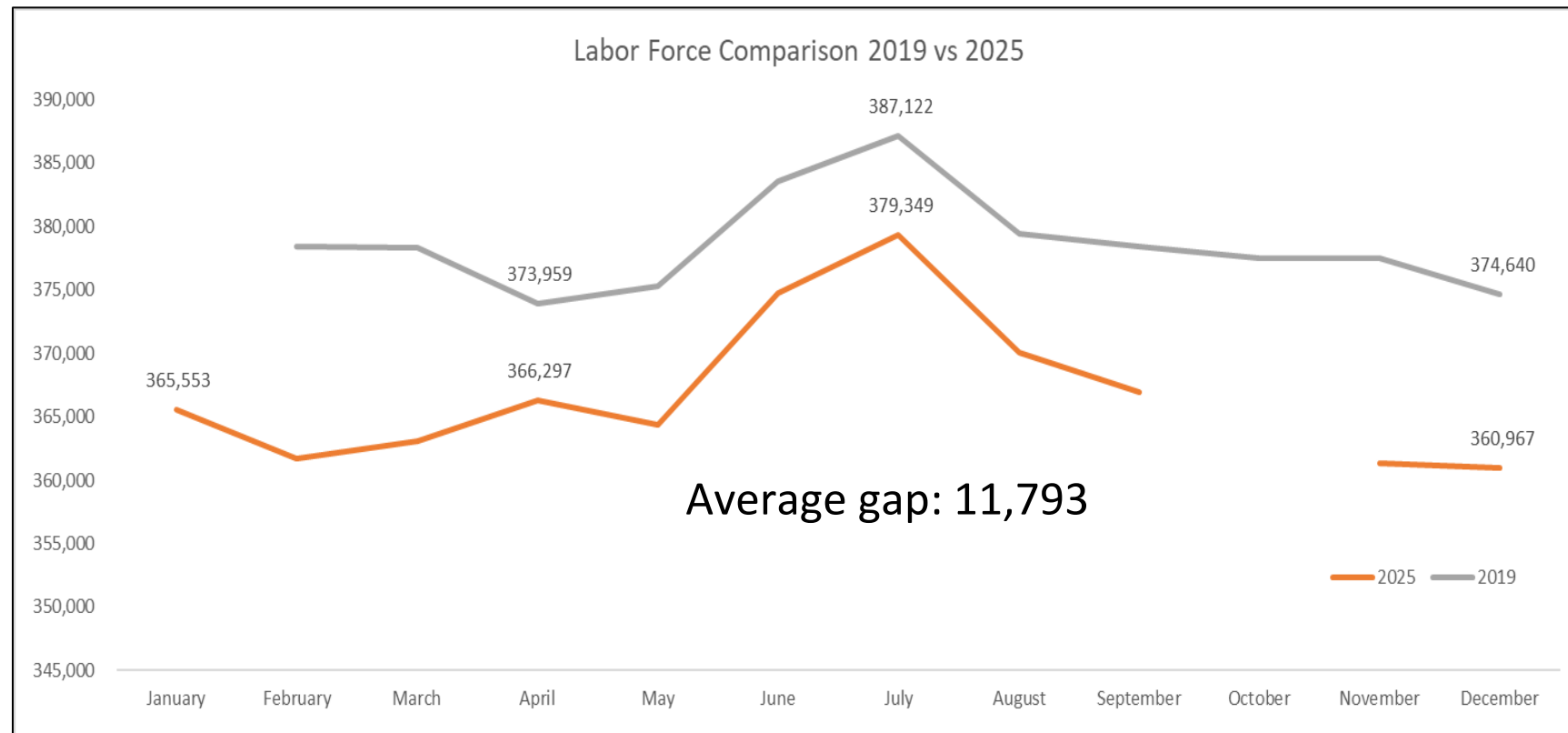
New Jobs
4,018

Retained Jobs
3,224

Direct Investment
\$2.2 B

EMPLOYMENT STATS

Labor Force totals significantly trail 2019



UNEMPLOYMENT

Avg. unemployment rate in 2025

4.5%

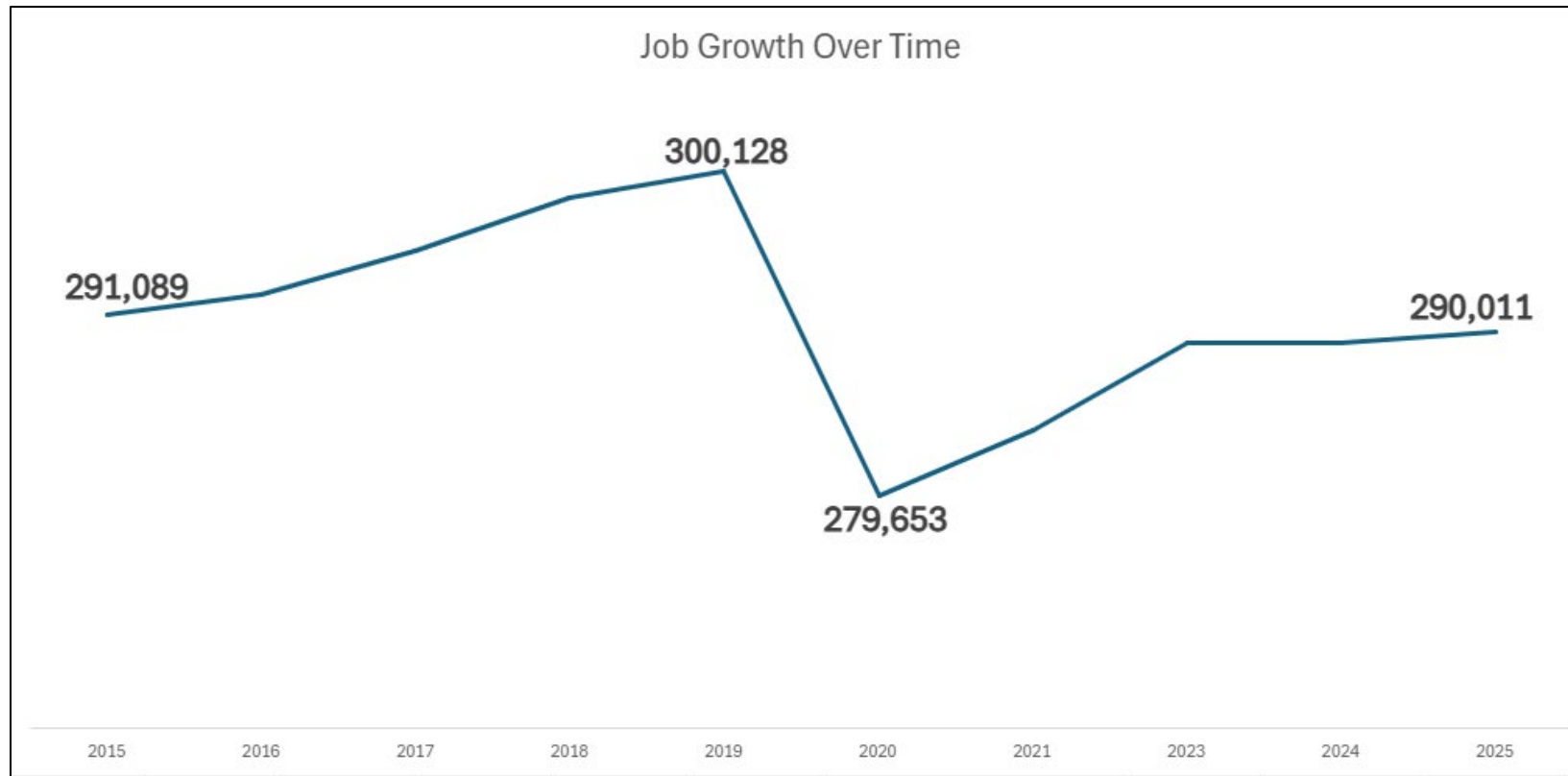
Avg. # of persons unemployed in 2025

16,580

This data is based on County residents, regardless of where they work

EMPLOYMENT STATS

Total Jobs also trails 2019



Job Totals

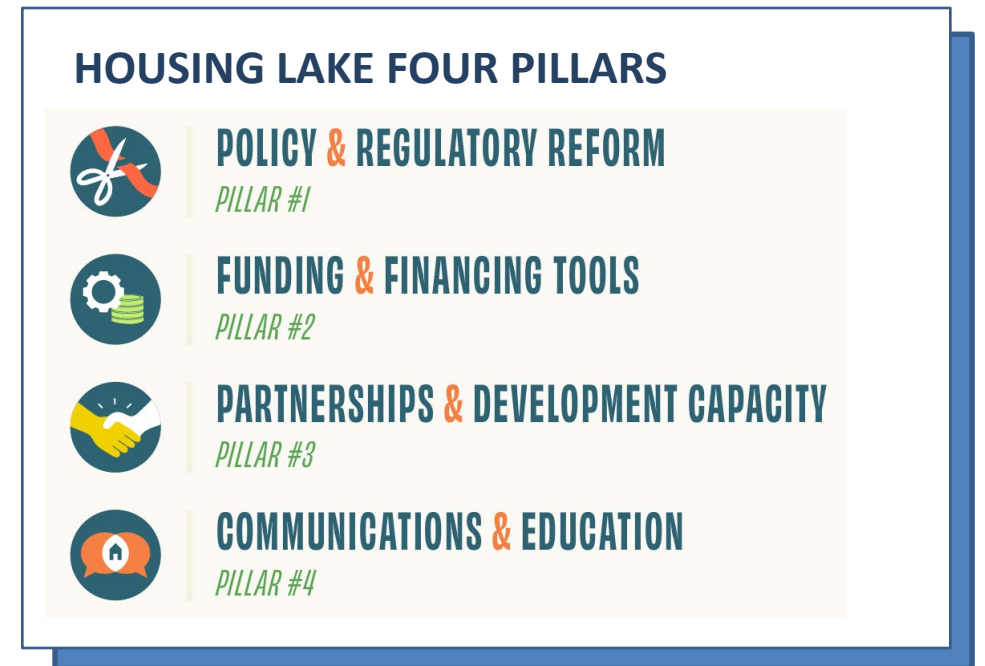
Does not include jobs in Cook or other counties that are filled by Lake County residents

Roughly 27% of residents work outside Lake County

This data is based on employers in Lake County

CEDS INITIATIVES

- **Housing**
 - Housing Lake wrap up, call to action, and Phase II
 - Speed Networking: Municipalities & Developers April
 - Opportunity Zone 2.0: Proposal Window Now Open
- **College-Going & Career Awareness**
 - Workforce landscape study underway
 - Stakeholders identifying priority occupations, wage levels, educational attainment/tracts
- **Life Sciences Ecosystem Study**
 - Engaging university, corporate, public leaders to determine whether to conduct more structured analysis
 - Goal would be to understand key differentiators, align messaging for recruitment



COMMUNICATIONS & EVENTS

- Many media appearances
- Big Event 2026 – April 24



GCEP REGIONAL COLLABORATION

- Chicago's Birthday celebration & #1 in the USA, again
- Busy April
 - Germany trip
 - Select-Chi
 - SelectUSA
- Local attraction event opportunities

CHICAGOLAND
VOTED TOP U.S. METRO FOR CORPORATE RELOCATION

2025
TOP METROS
WINNER

FOR AN UNPRECEDENTED 13 CONSECUTIVE YEARS, CHICAGOLAND LEADS THE NATION

The graphic features a dark blue background with white text. At the top, 'CHICAGOLAND' is written in large, bold, white letters. Below it, 'VOTED TOP U.S. METRO FOR CORPORATE RELOCATION' is written in smaller white text. In the center, there is a circular award seal with '2025 TOP METROS WINNER' and 'TOTAL PROJECTS' around the perimeter. At the bottom, a line of text reads 'FOR AN UNPRECEDENTED 13 CONSECUTIVE YEARS, CHICAGOLAND LEADS THE NATION'.



NEW INVESTORS IN THE LAST YEAR

AMGEN



CLAYCO



JASULCA Terman
STRATEGIC COMMUNICATIONS



NORTH SHORE GAS
NATURAL GAS DELIVERY





Lake
County Partners