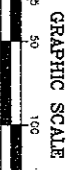
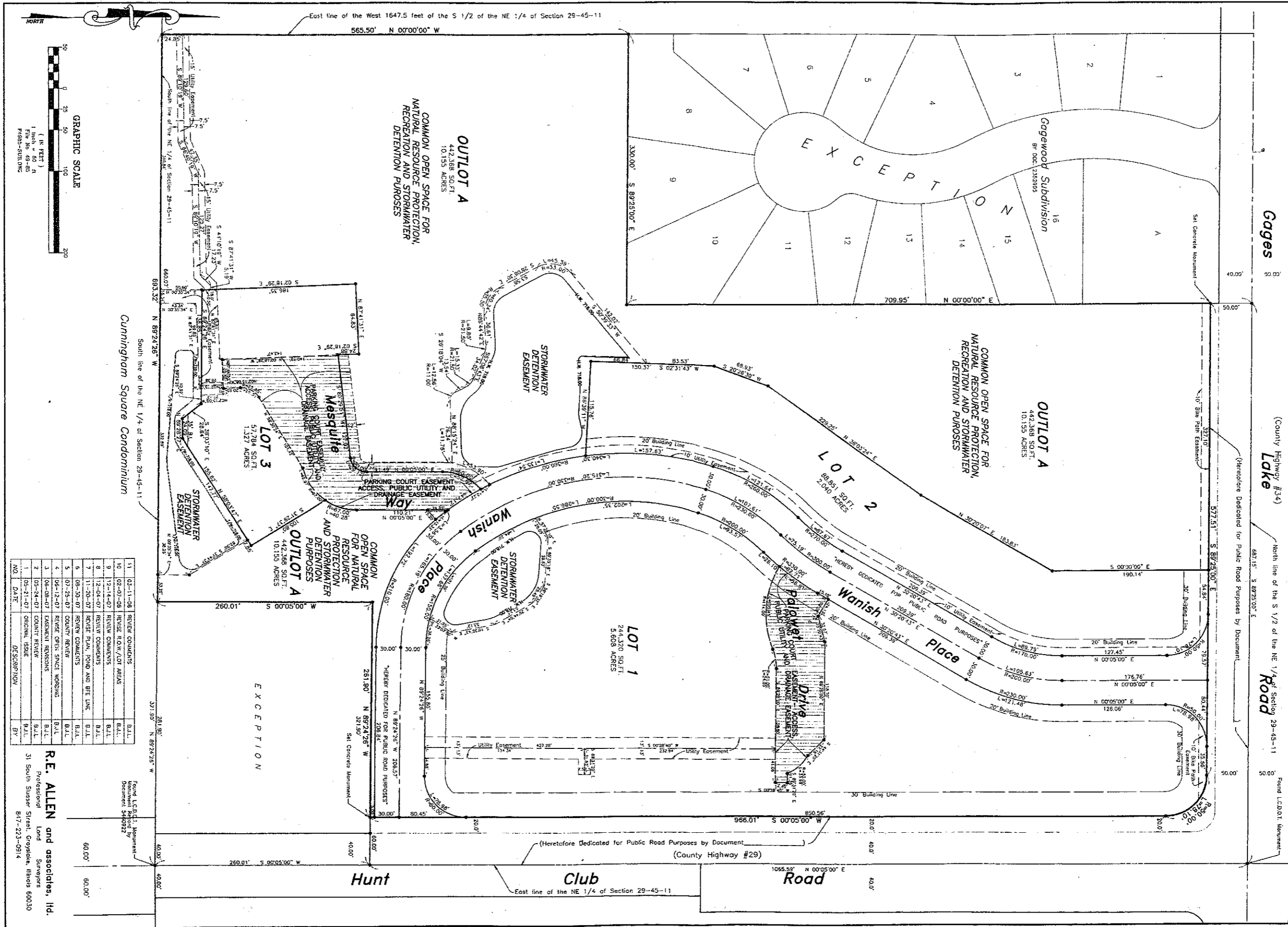


RECORD TO BE FILED IN THE PUBLIC RECORDS OF THE COUNTY OF LAKE, ILLINOIS, IN THE OFFICE OF THE CLERK OF THE CIRCUIT COURT OF LAKE COUNTY, ILLINOIS, FILE NO. 6326631

**FINAL PLAT**  
**WANISH PARK PLANNED UNIT DEVELOPMENT**  
 BEING A MULTI DWELLING AND MULTIPLEX RESIDENTIAL SUBDIVISION  
 IN LAKE COUNTY, ILLINOIS.

**SHEET 1 OF 2**  
 TOTAL AREA:  
 21.043 ACRES  
 916,638 SQ. FT.

Doc 6326631 4-1-08



NO.	DATE	DESCRIPTION	BY
1	03-21-07	COURT REVIEW	B.A.L.
2	03-21-07	COURT REVIEW	B.A.L.
3	06-08-07	EASEMENT REVISIONS	B.A.L.
4	06-12-07	RESPONSE PER SPACE WORKING	B.A.L.
5	07-25-07	COUNTY REVIEW	B.A.L.
6	08-30-07	REVIEW COMMENTS	B.A.L.
7	11-30-07	RENDER PLAN, POND AND BIE LINE	B.A.L.
8	12-04-07	REVIEW COMMENTS	B.A.L.
9	12-14-07	REVIEW COMMENTS	B.A.L.
10	02-07-08	REVIEW COMMENTS	B.A.L.
11	03-11-08	REVIEW COMMENTS	B.A.L.

**R.E. ALLEN and associates, Inc.**  
 Professional Land Surveyors  
 31 South Stussler Street, Grayville, Illinois 60030  
 817-223-0914

Cunningham Square Condominium

Form L.C.D. 11, Monument  
 Document #490922