

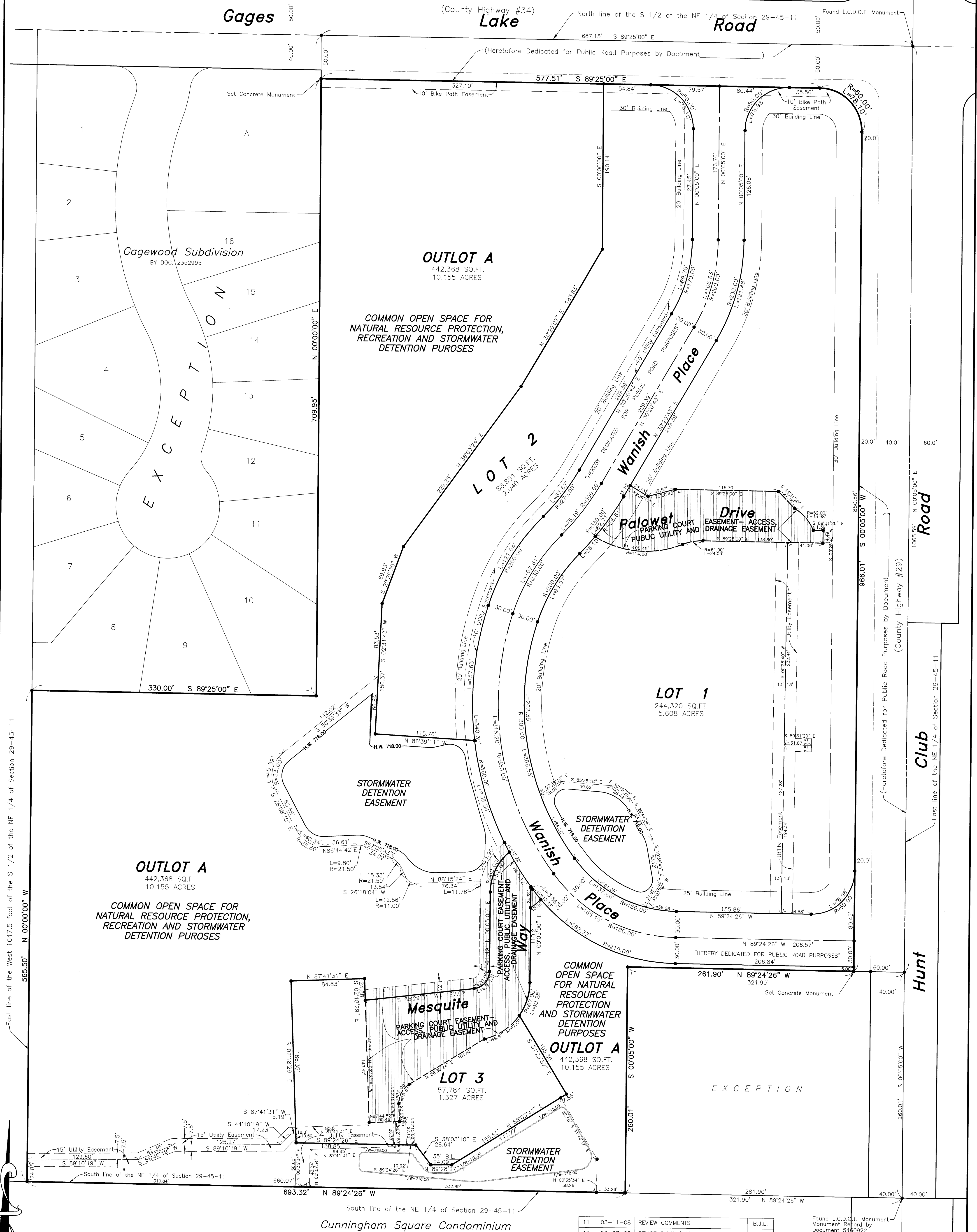
FINAL PLAT
OF
WANISH PARK PLANNED UNIT DEVELOPMENT
BEING A MULTI DWELLING AND MULTIPLEX RESIDENTIAL SUBDIVISION

TOTAL AREA:
21.043 ACRES
916,638 SQ. FT.

Image# 043078310003 Type: PSB
Recorded: 04/01/2008 at 04:04:08 PM
Recorder#: 2008-0018991
Total Amt: \$78,000 Page 1 of 3
IL Rental Housing Fund: \$10.00
Lake County, IL Recorder:
Mary Ellen Vanderverter Recorder
File # 6326631

THAT PART OF THE SOUTH HALF OF THE NORTHEAST QUARTER OF SECTION 29, TOWNSHIP 45 NORTH, RANGE 11, EAST OF THE THIRD PRINCIPAL MERIDIAN,
IN LAKE COUNTY, ILLINOIS.

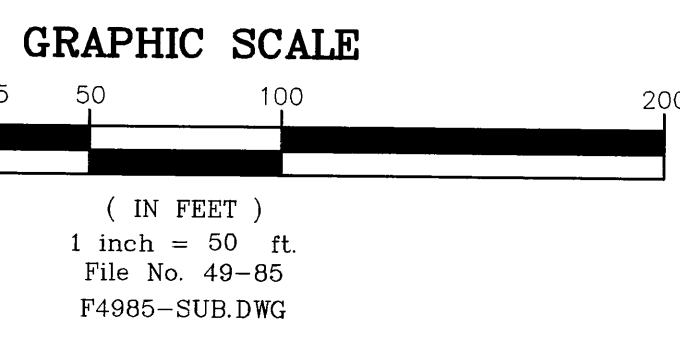
Doc 6326631 4-1-08



NO.	DATE	DESCRIPTION	BY
11	03-11-08	REVIEW COMMENTS	B.J.L.
10	02-07-08	REVISE R.O.W./LOT AREAS	B.J.L.
9	12-14-07	REVIEW COMMENTS	B.J.L.
8	12-04-07	REVIEW COMMENTS	B.J.L.
7	11-20-07	REVISE PLAN, POND AND BFE LINE	B.J.L.
6	08-30-07	REVIEW COMMENTS	B.J.L.
5	07-25-07	COUNTY REVIEW	B.J.L.
4	06-12-07	REVISE OPEN SPACE WORDING	B.J.L.
3	06-08-07	EASEMENT REVISIONS	B.J.L.
2	05-24-07	COUNTY REVIEW	B.J.L.
1	05-21-07	ORIGINAL ISSUE	B.J.L.

Found L.C.D.C.T. Monument
Monument Record by
Document 5460922

R.E. ALLEN and associates, Ltd.
Professional Land Surveyors
31 South Slusser Street, Grayslake, Illinois 60030
847-223-0914



East line of the West 1647.5 feet of the S 1/2 of the NE 1/4 of Section 29-45-11

East line of the NE 1/4 of Section 29-45-11

South line of the NE 1/4 of Section 29-45-11
Cunningham Square Condominium