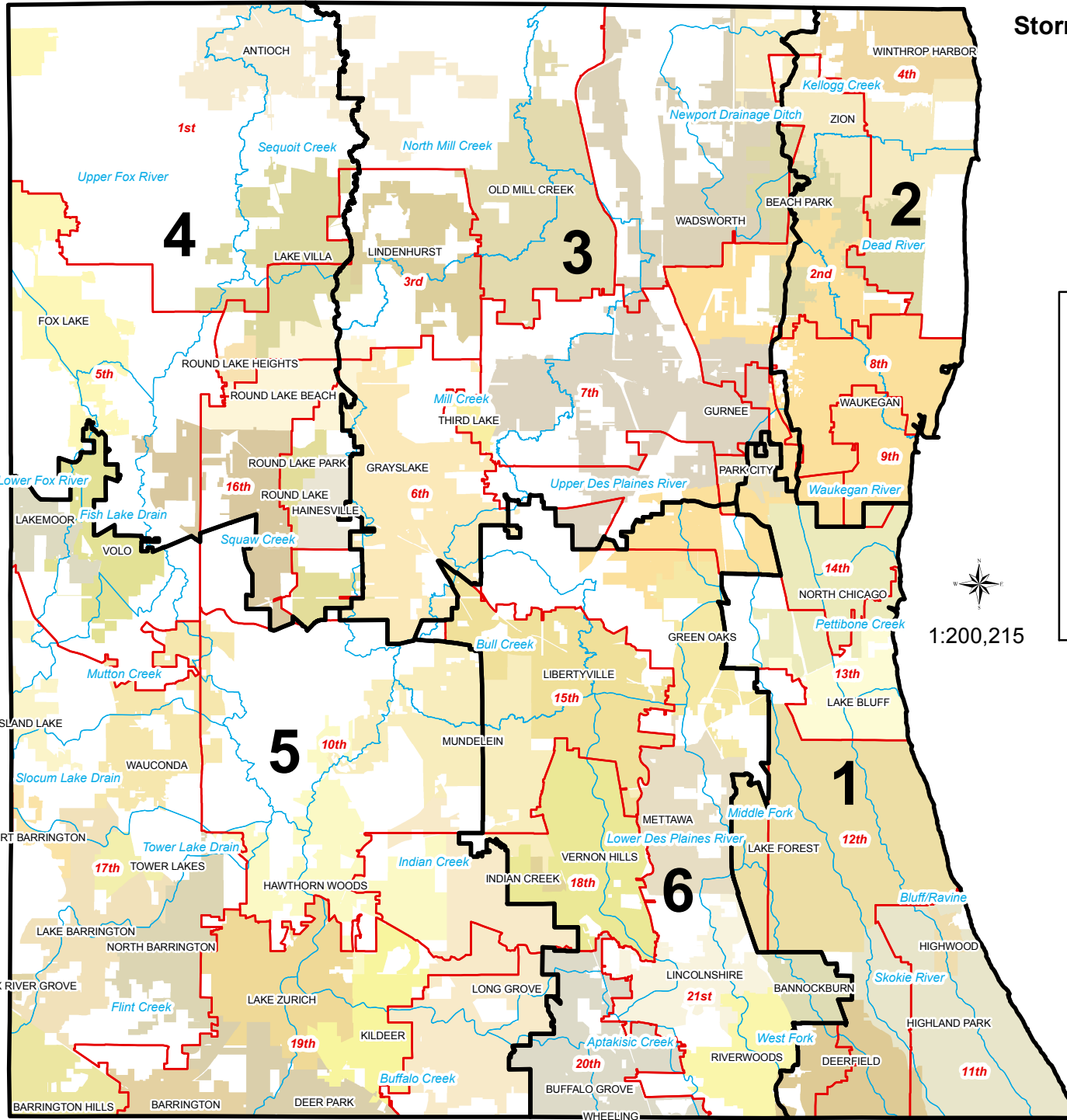


**ATTACHMENT A
-2011 APPROVED-
Stormwater Management Commission
Representation Areas***



County Board Districts

SMC Dist 1 CB Dist 11 CB Dist 12 CB Dist 13 CB Dist 14	SMC Dist 2 CB Dist 2 CB Dist 4 CB Dist 8 CB Dist 9	SMC Dist 3 CB Dist 3 CB Dist 6 CB Dist 7
SMC Dist 4 CB Dist 1 CB Dist 5 CB Dist 16	SMC Dist 5 CB Dist 10 CB Dist 17 CB Dist 19	SMC Dist 6 CB Dist 15 CB Dist 18 CB Dist 20 CB Dist 21

Municipalities

SMC Dist 1 DEERFIELD HIGHLAND PARK HIGHWOOD LAKE BLUFF LAKE FOREST NORTH CHICAGO PARK CITY	SMC Dist 2 BEACH PARK WAUKEGAN WINTHROP HARBOR ZION	SMC Dist 3 GRAYS LAKE GURNEE LINDENHURST OLD MILL CREEK PARK CITY THIRD LAKE WADSWORTH
SMC Dist 4 ANTIOCH FOX LAKE HAINESVILLE LAKE VILLA ROUND LAKE ROUND LAKE BEACH ROUND LAKE HEIGHTS ROUND LAKE PARK	SMC Dist 5 BARRINGTON BARRINGTON HILLS DEER PARK FOX RIVER GROVE HAWTHORN WOODS ISLAND LAKE KILDEER LAKE BARRINGTON LAKE ZURICH LAKEMOOR LONG GROVE MUNDELEIN NORTH BARRINGTON PORT BARRINGTON TOWER LAKES VOLO WAUCONDA	SMC Dist 6 BANNOCKBURN BUFFALO GROVE GREEN OAKS INDIAN CREEK LIBERTYVILLE LINCOLNSHIRE METTAWA RIVERWOODS VERNON HILLS WHEELING



1:200,215

SMC Representation Area Population**

District	Population	Deviation
1	118073	0.71%
2	117539	0.25%
3	118066	0.70%
4	115314	-1.65%
5	116129	-0.95%
6	118341	0.94%

**2010 US Census

- SMC Representation Area Boundary
- County Board District Boundary
- Sub-Watershed Boundary



STORMWATER MANAGEMENT COMMISSION
Lake County Stormwater Management Commission Courtesy Map.
This map is provided for general locational information only. Map features have been derived from various sources, each of which has its own scale and accuracy. The locations of all features are approximate. This map should not be used to determine building set-backs or as a basis for purchasing property. Field Surveys and delineations are required to verify the exact locations of property lines and other map features.

*Lake County Stormwater Management Commission (LCSMC) approved boundaries - December 1, 2011
DATA SOURCES: LCSMC and Lake County Department of Information And Technology, GIS & Mapping Division

Map Location U:\ADMINISTRATION\SMC\SMC Representation Districts\Maps