



# Community Health Assessment and Community Health Improvement Plan

---

Mark Pfister  
Executive Director

# Mobilizing Action Through Planning and Partnerships (MAPP)



- Modified MAPP process
- Community-driven process to understand factors that impact health and assess the capacity of the public health system
- Develop strategies to address the root causes of health inequities
- Drives alignment between the Community Health Improvement Plan (CHIP) and LCHD/CHC strategic plan

# Community Health Assessment

## Modified MAPP Assessments

**Live Well Lake County  
completed four  
modified MAPP  
assessments and used  
the data to determine  
CHIP priorities**

01

Local Public Health System  
Assessment

02

Forces of Change  
Assessment

03

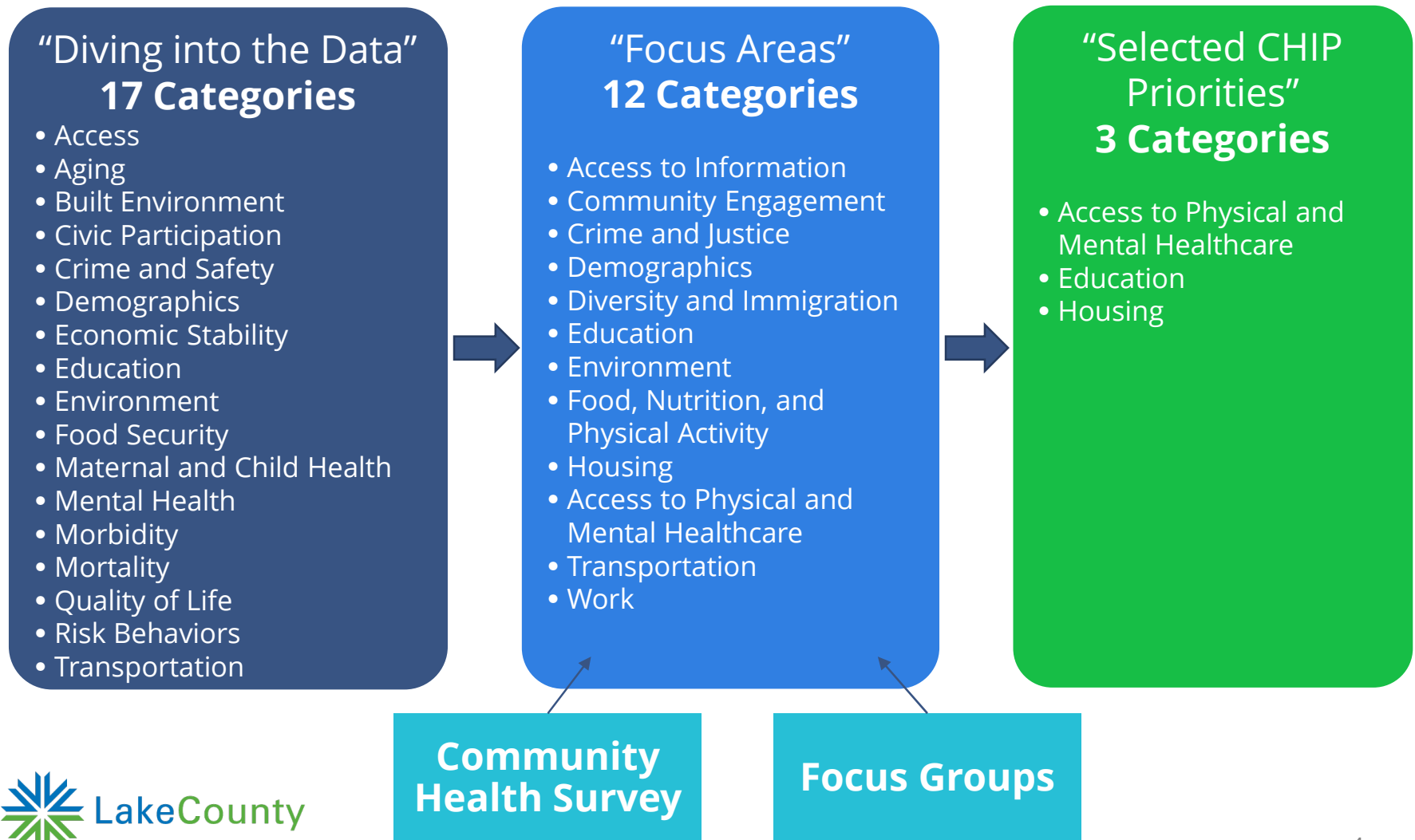
Community Themes and  
Strengths Assessment

04

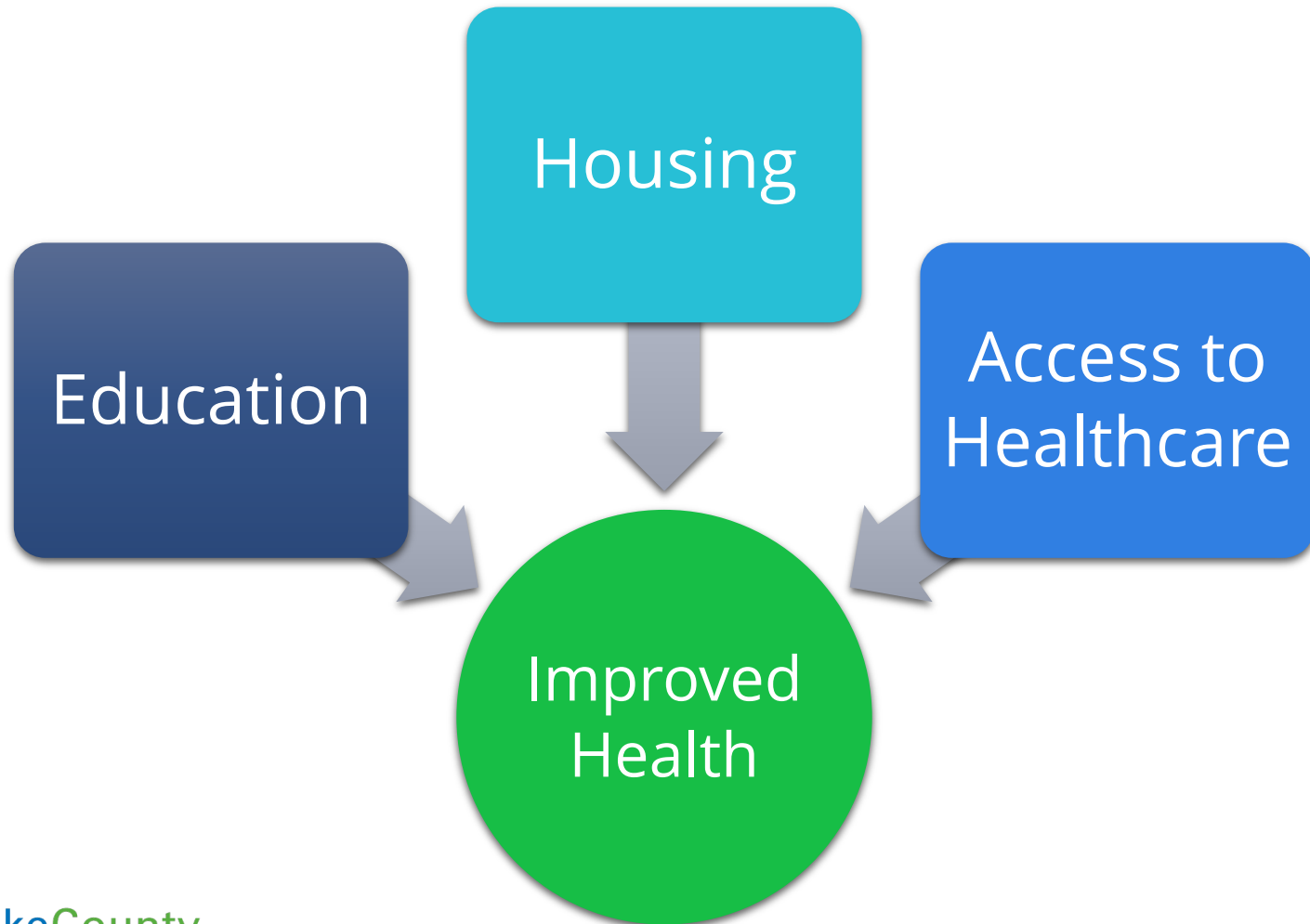
Community Health Status  
Assessment

# Community Health Assessment

Reviewing, Focusing, and Prioritizing



# Community Health Improvement Priorities



# Community Health Improvement Plan

Community driven plan

Addresses root causes of health inequities

Policy, systems and environmental changes

Implemented by Live Well Lake County





---

3010 Grand Avenue, Waukegan, Illinois 60085  
(847) 377-8000  
[health.lakecountyil.gov](http://health.lakecountyil.gov)



HealthDepartment



@LakeCoHealth



LakeCoHealth