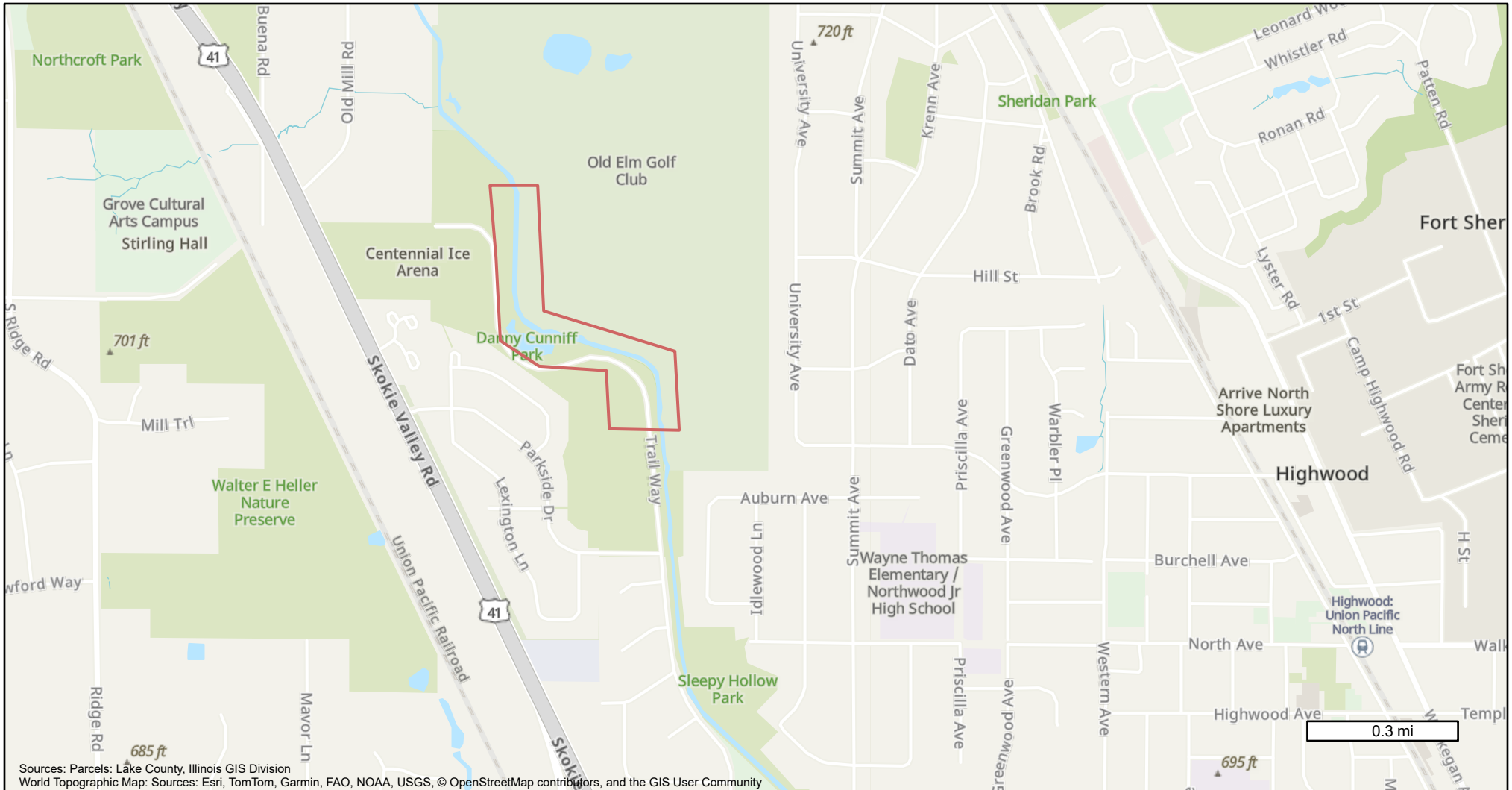


Location Map-Skokie River Channel Improvements Phase 3



Sources: Parcels: Lake County, Illinois GIS Division
World Topographic Map: Sources: Esri, TomTom, Garmin, FAO, NOAA, USGS, © OpenStreetMap contributors, and the GIS User Community



Lake County, Illinois



Map Printed on 6/28/2024



Disclaimer:

The selected feature may not occur anywhere in the current map extent. A Registered Land Surveyor should be consulted to determine the precise location of property boundaries on the ground. This map does not constitute a regulatory determination and is not a base for engineering design. This map is intended to be viewed and printed in color.