

SITE LOCATION MAP



ACTUAL PARKING	195 SPACES	
BUS PARKING	30 SPACES	
REQUIRED PARKING PER 9.1.2		
PARKING	2 MONTH (SUMMER CAMP)	10 MONTH (SCHOOL SEASON)
CAMP: EMPLOYEES (1/1 PERSON) VISITORS (1/ACRE)	95 37	1
DAYCARE: EMPLOYEES (1/1 PERSON) VISITORS (1/6 ENROLLEES)	15 9	27 22
TOTAL	156	49
	EXISTING ACTIVITY BUILDING	DAY CARE
OCCUPANCY	E	E
CONSTRUCTION CLASSIFICATION	TYPE IIB	TYPE IIB



**SAS
ARCHITECTS
& PLANNERS**

630 DUNDEE ROAD
NORTHBROOK, ILLINOIS 60062
847-564-8333 • FAX 847-564-9989

ARCHITECTS

**JCC EARLY CHILDHOOD DAY CARE
AT ELAINE FRANK APACHI DAY CAMP**

23380 N. OLD McHENRY RD. LAKE ZURICH, IL. 60047

SITE PLAN

NO.	DESCRIPTION	DATE
1	ZONING REVIEW	08/28/13

REVISIONS

SIGNATURE

STATE OF ILLINOIS LICENSE
EXPIRES: NOVEMBER 30, 2014
PROFESSIONAL DESIGN FIRM
REGISTRATION NO. 184-000238

DRAWN BY	APPROVED BY
MD, YB	JTM
JOB NO.	DATE
13053	08/28/2013
SHEET NO.	

1 SITE PLAN
SCALE: 1" = 60'-0"



G001



SAS
ARCHITECTS
& PLANNERS

630 DUNDEE ROAD
NORTHROCK, ILLINOIS 60062
847-564-8333 • FAX 847-564-9989

ARCHITECTS

23380 N. OLD MCHENRY RD. LAKE ZURICH, IL. 60047
JCC EARLY CHILDHOOD DAY CARE
AT ELAINE FRANK APACHI DAY CAMP

NO. DESCRIPTION DATE
ZONING REVIEW 08/28/13

REVISIONS
SIGNATURE

STATE OF ILLINOIS LICENSE
EXPIRES, NOVEMBER 30, 2014
PROFESSIONAL DESIGN FIRM
REGISTRATION NO. 184-000238

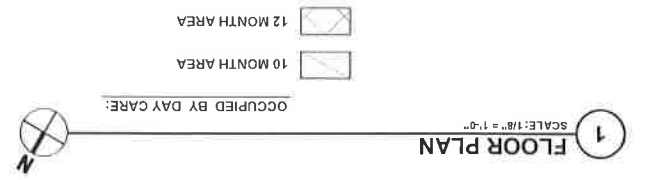
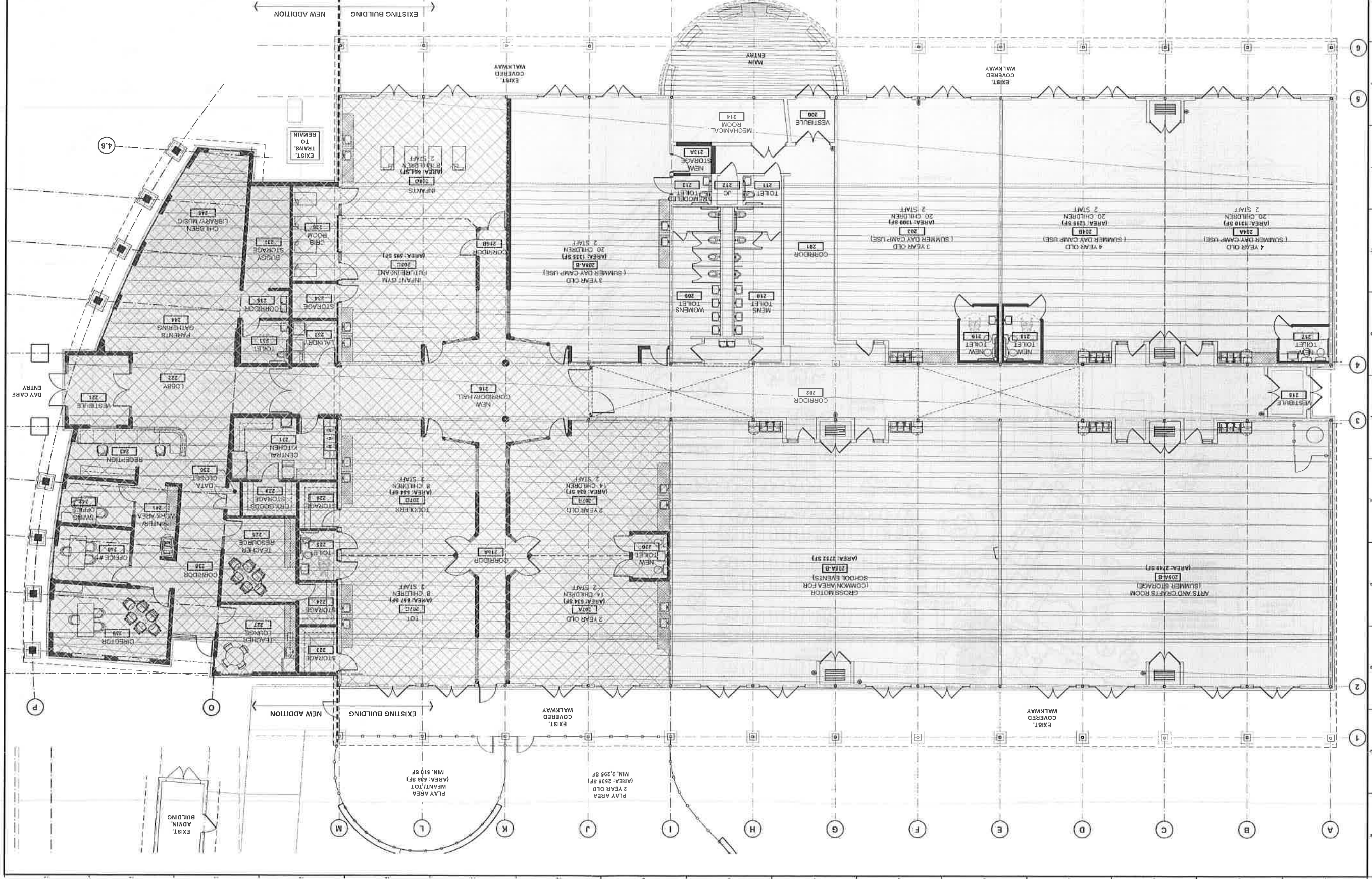
DRAWN BY APPROVED BY
M.D., Y.B. J.T.M.
JOB NO. DATE
13053 08/28/2013
SHEET NO.
A102

1:113063, JCC EARLY CHILDHOOD DAY CARE, CS

TOTAL	132	18	52	10
INFANT	8	2	8	2
TOT	8	2	8	2
TODDLERS	28	4	28	4
2 YEAR OLD	28	4	28	4
3 YEAR OLD	40	4	40	-
4 YEAR OLD	40	4	40	-
STAFF	2	2	2	2
CHILD	2	2	2	2
STAFF	2	2	2	2

AGE GROUP 10 MONTH 12 MONTH

EARLY CHILDHOOD DAY CARE PROGRAM



1 FLOOR PLAN