

SUNRISE DAY CAMP

PUD #000910-2023

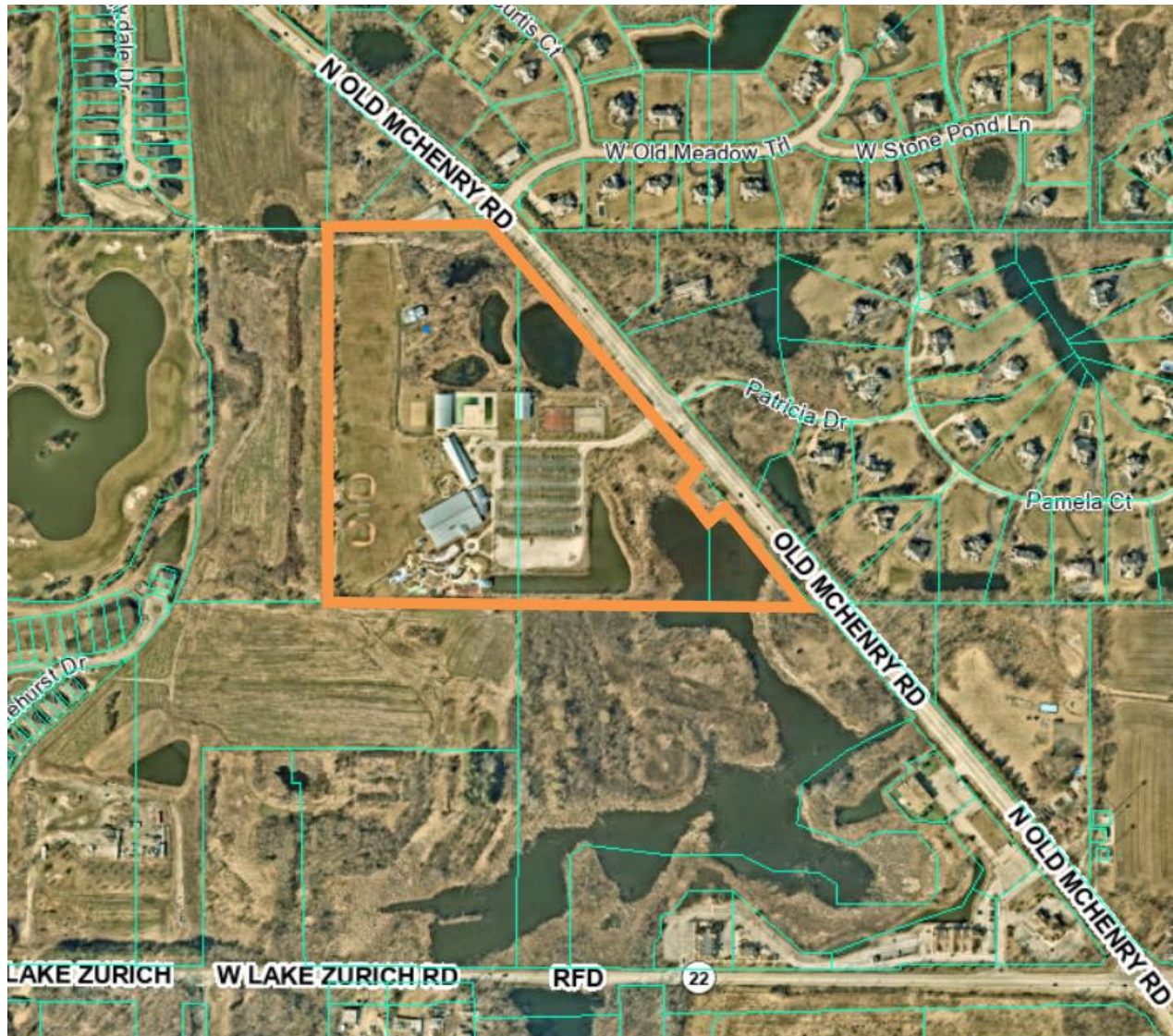


**Minor Modification to a Conditional
Use Permit (CUP) for Planned Unit
Development (PUD)**

Ela Township

November 1, 2023

SITE DETAILS



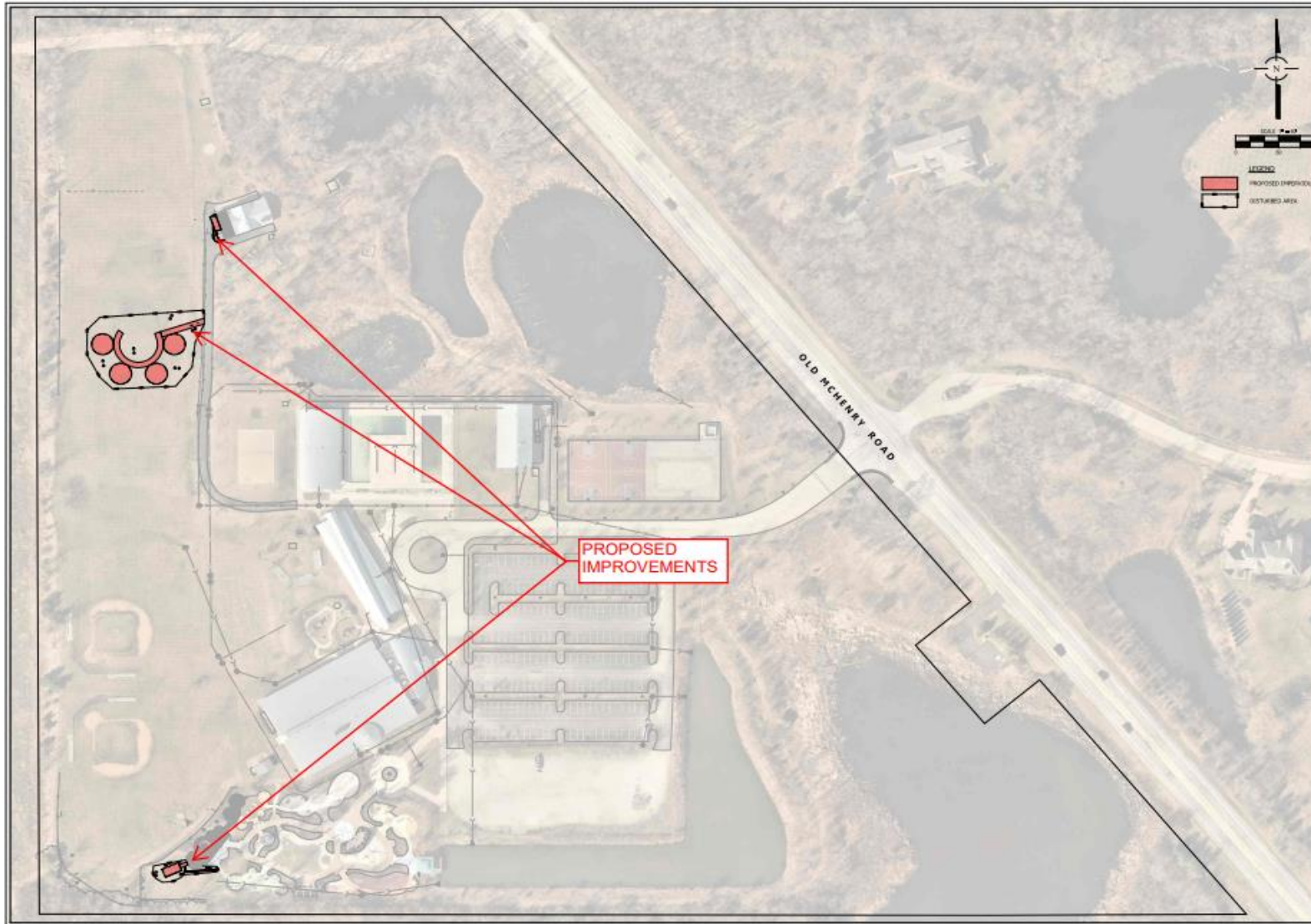
- **34.34-acre property**
- **Located west of Old McHenry Road and approx. ½ north of IL Route 22 – Lake Zurich, Illinois.**
- **Petitioner: JFMC Facilities Corporation, operator of Sunrise Day Camp**

EXISTING CONDITIONS



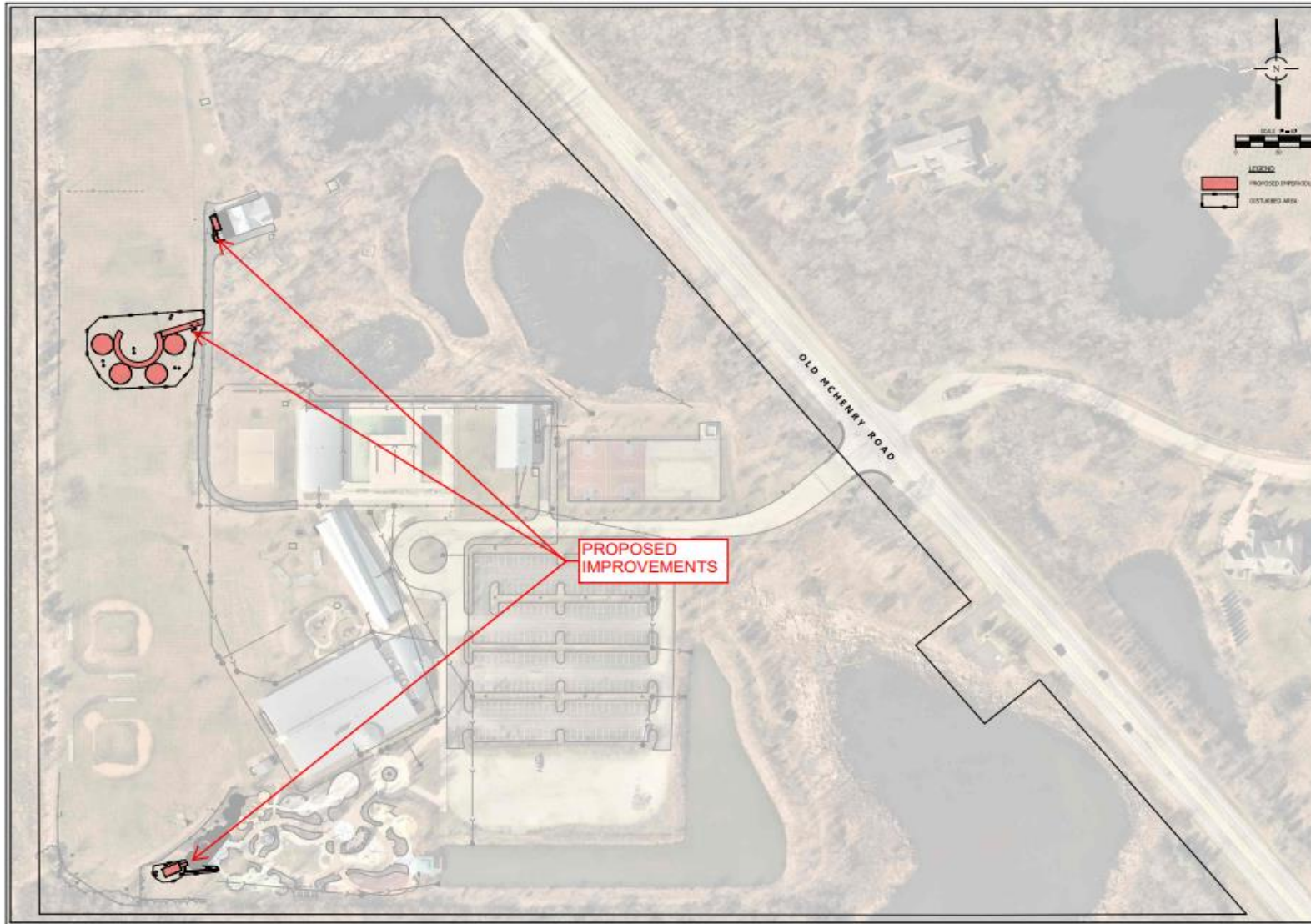
- PUD for the day camp and day care facility approved in February 2005
- Facility opened in 2008 w/various buildings and outdoor camping/recreation features.
- Minor Modifications approved in 2009 and 2013 for playground and science recreation park

PROPOSED IMPROVEMENTS



- **Addition to Maintenance Building (restrooms): 200 sq. ft.**
- **Four Yurts (classrooms): 707 sq. ft. each**
- **Greenhouse: 288 sq. ft.**

PROPOSED IMPROVEMENTS



- For the subject property and use, Lake County Code authorizes PBZE Committee to allow minor modification for the PUD if increase to floor area is less than 3,434 square feet.

RECOMMENDATION

Staff recommends approval:

- 1. Applicant has completed site plan review and meets requirements of the Lake County Code.**
- 2. Modification will allow for additional amenities and programming for camp use which has been present since 2008.**
- 3. Proposed uses are well-integrated into the campus and will not have a negative impact upon adjacent properties.**



Questions