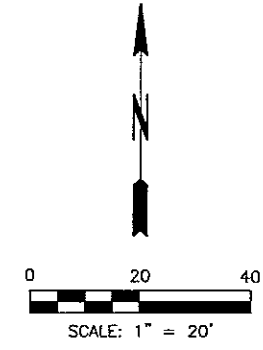
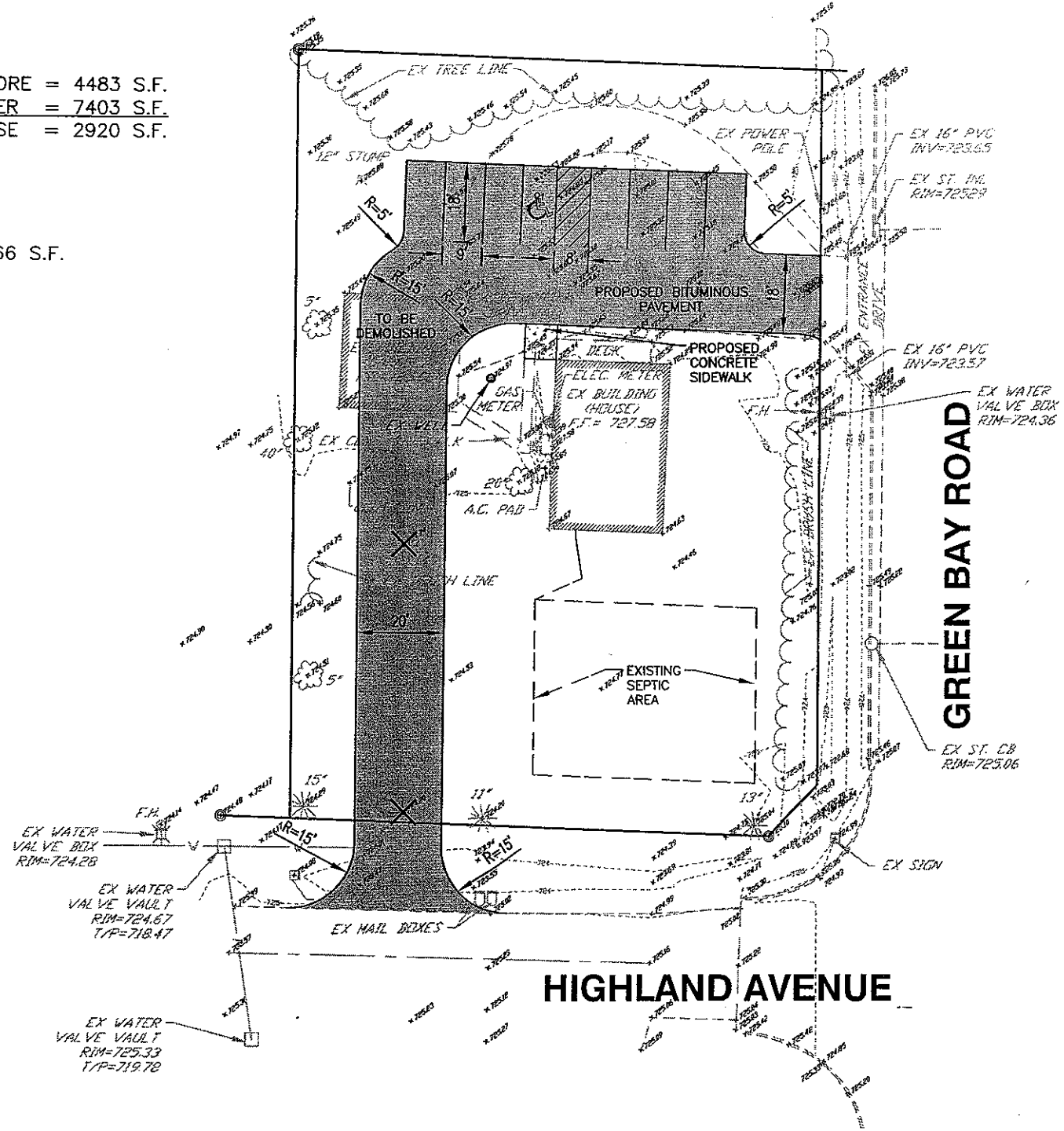


IMPERVIOUS SURFACE AREA BEFORE = 4483 S.F.  
 IMPERVIOUS SURFACE AREA AFTER = 7403 S.F.  
 NET INCREASE = 2920 S.F.

BUILDING FLOOR AREA = 1026.66 S.F.



**PARKING STALLS**

REGULAR STALLS = 7  
 HANDICAPPED STALLS = 1  
 TOTAL STALLS = 8

REVISIONS

**McClure**  
 Engineering Associates, Inc.  
 Illinois 50985-2495  
 Waukegan, IL 847-336-7155  
 2728 Grand Avenue  
 Waukegan, IL 847-336-7100  
 TEL 847-336-7100  
 License: Illinois 164-000016  
 Copyright 2010 by McClure Engineering Associates, Inc.

SCALE: 1" = 20'
DRAWN BY: MAK
CHECKED BY: HMD
DATE: 9/2/11

**SITE PLAN**  
**36104 GREEN BAY ROAD**  
 CITY OF WAUKEGAN JOB NUMBER: 02-15-11-144 LAKE COUNTY, ILLINOIS

SHEET NO.  
**1**  
 of  
**1**

W:\dwg\WK\ DAN JOHNSON\11144.DANJOHNSON.dwg 9/21/2011 3:58:32 PM CDT