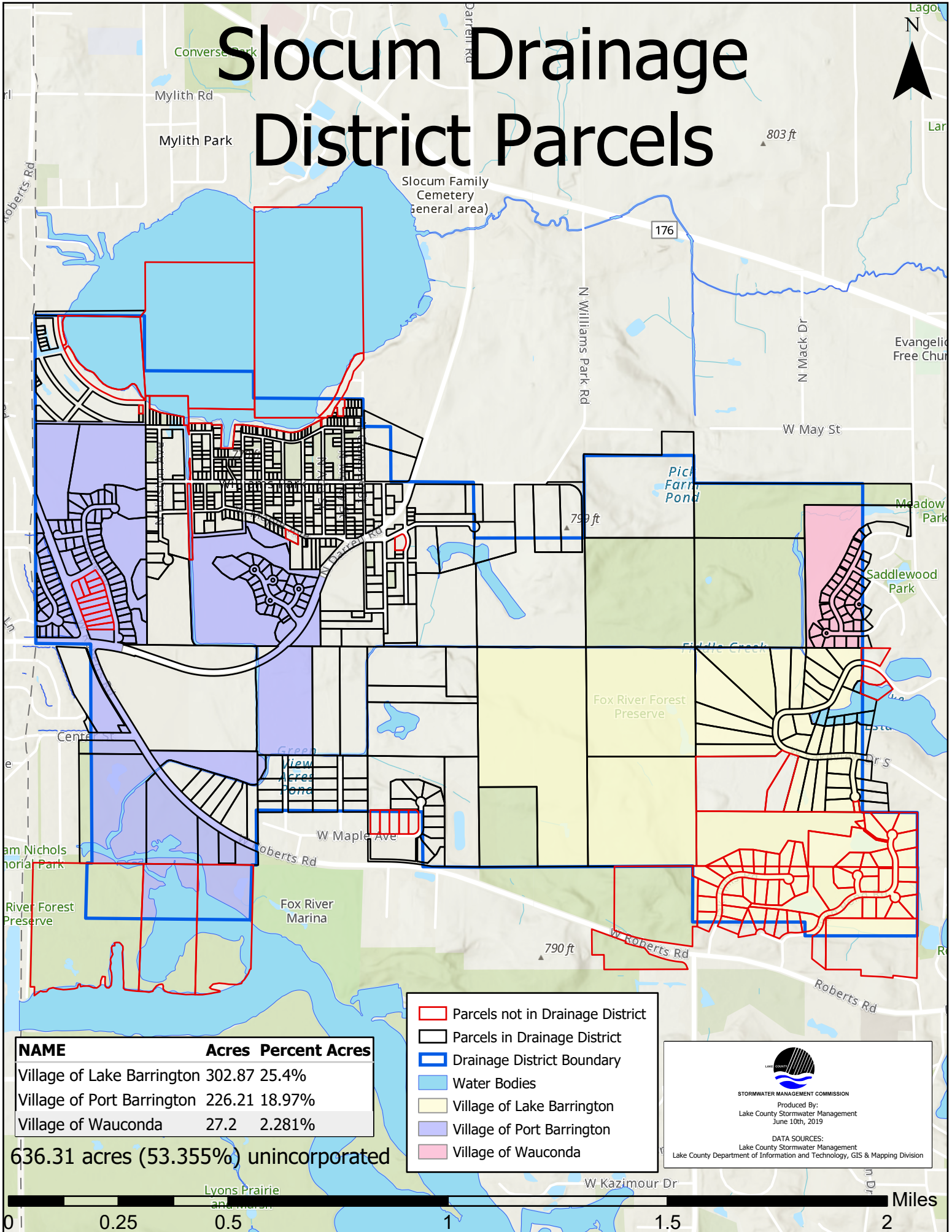
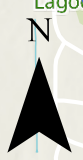



Slocum Drainage District Parcels



- Parcels not in Drainage District
- Parcels in Drainage District
- Drainage District Boundary
- Water Bodies
- Village of Lake Barrington
- Village of Port Barrington
- Village of Wauconda

NAME	Acres	Percent	Acres
Village of Lake Barrington	302.87	25.4%	
Village of Port Barrington	226.21	18.97%	
Village of Wauconda	27.2	2.281%	
636.31 acres (53.355%) unincorporated			


STORMWATER MANAGEMENT COMMISSION
 Produced By:
 Lake County Stormwater Management
 June 10th, 2019
 DATA SOURCES:
 Lake County Stormwater Management
 Lake County Department of Information and Technology, GIS & Mapping Division

