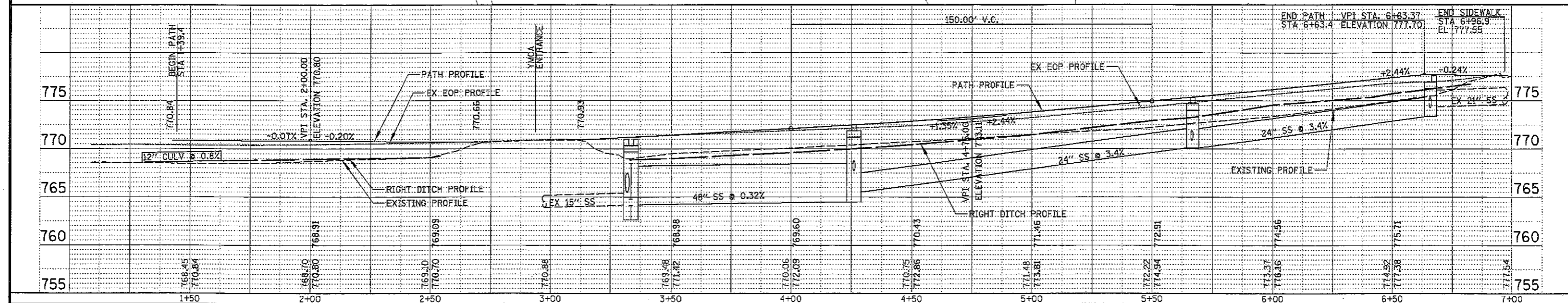
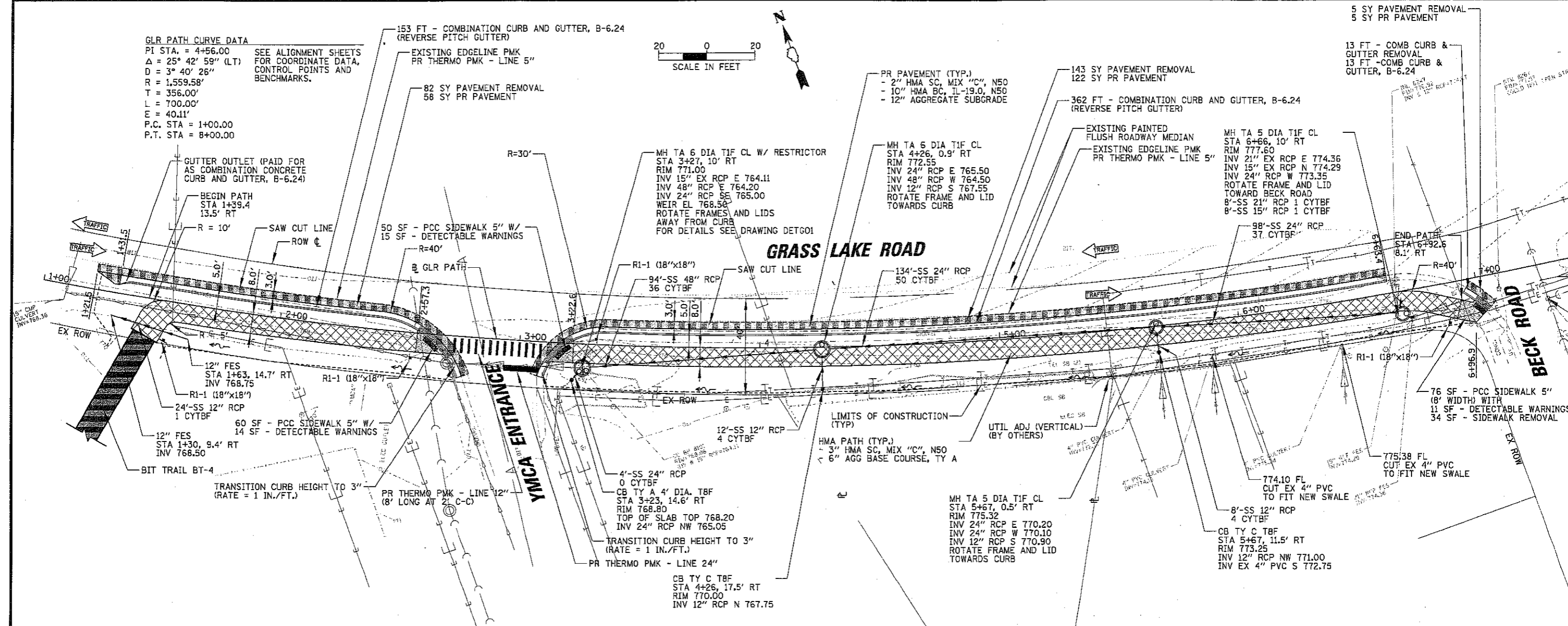
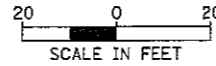


GLR PATH CURVE DATA
 PI STA. = 4+56.00
 $\Delta = 25^\circ 42' 59''$ (LT)
 $D = 3^\circ 40' 26''$
 $R = 1,559.58'$
 $T = 356.00'$
 $L = 700.00'$
 $E = 40.11'$
 P.C. STA = 1+00.00
 P.T. STA = 8+00.00

153 FT - COMBINATION CURB AND GUTTER, B-6.24
 (REVERSE PITCH GUTTER)



CHRISTOPHER B. BURKE ENGINEERING, LTD.
 9575 W. Higgins Road, Suite 600
 Rosemont, Illinois 60018
 (847) 823-0500

CLIENT:
Lake County Forest Preserves
Preservation, Restoration, Education & Recreation

NO.	DATE	NATURE OF REVISION	CHKD.	MODEL
FILE NAME	H:\LCP\080615\CIV\GLR_RPP01\080615.SHT			

DSGN.	BLL
DWN.	PWN
CHKD.	JGS
SCALE:	1" = 20'
PLOT DATE:	2/5/2010
CAD USER:	MCZUPWS
	Default

TITLE:
**HASTINGS LAKE FOREST PRESERVE
 PUBLIC ACCESS IMPROVEMENTS
 GRASS LAKE ROAD TRAIL (DOT)
 PLAN AND PROFILE**

PROJ. NO. 080615
 DATE 02/5/2010
 90% SUBMITTAL
 SHEET 121 OF 135
 DRAWING NO.
RPPG01