

ALL INTERIOR WALL, CEILING AND TRIM FINISHES SHALL BE MINIMUM CLASS 2 FSR-25 ALL EXPOSED INSULATION MATERIAL WILL HAVE A FLAME SPREAD RATING NOT TO EXCEED 25 WITH A SMOKE DEVELOPED FACTOR NOT TO EXCEED 450. ALL DOORS AND HEADS TO BE KEVLAR IN THE DIRECTION OF EGRESS AND MUST BE OPERATED WITH NO SPECIAL KNOWLEDGE.

DEMOLITION NOTES
CONTRACTOR MUST VISIT SITE TO FAMILIARIZE HIMSELF WITH ALL EXISTING CONDITIONS. CONTRACTOR MUST VERIFY ALL DIMENSIONS AND CONDITIONS BEFORE DEMOLITION. CONTRACTOR MUST VERIFY ALL DIMENSIONS AND CONDITIONS BEFORE DEMOLITION. CONTRACTOR MUST VERIFY ALL DIMENSIONS AND CONDITIONS BEFORE DEMOLITION. CONTRACTOR MUST VERIFY ALL DIMENSIONS AND CONDITIONS BEFORE DEMOLITION.

CONSTRUCTION NOTES
CONTRACTOR MUST VISIT SITE TO FAMILIARIZE HIMSELF WITH ALL EXISTING CONDITIONS. CONTRACTOR MUST VERIFY ALL DIMENSIONS AND CONDITIONS BEFORE DEMOLITION. CONTRACTOR MUST VERIFY ALL DIMENSIONS AND CONDITIONS BEFORE DEMOLITION. CONTRACTOR MUST VERIFY ALL DIMENSIONS AND CONDITIONS BEFORE DEMOLITION. CONTRACTOR MUST VERIFY ALL DIMENSIONS AND CONDITIONS BEFORE DEMOLITION.

ENERGY COMPLIANCE NOTES
ALL NEW WORK AND MATERIALS MUST COMPLY WITH THE REQUIREMENTS OF THE 2006 INTERNATIONAL ENERGY CONSERVATION CODE SECTIONS 401, 402, 403 AND 405. ALL NEW WORK AND MATERIALS MUST COMPLY WITH THE REQUIREMENTS OF THE 2006 INTERNATIONAL ENERGY CONSERVATION CODE SECTIONS 401, 402, 403 AND 405.

CONCRETE AND FOUNDATION NOTES
WORK SHALL INCLUDE ALL CONCRETE WORKER PROTECTED BY A LIMITED TO THREE BARBERS. CONTRACTOR MUST VISIT SITE TO FAMILIARIZE HIMSELF WITH ALL EXISTING CONDITIONS. CONTRACTOR MUST VERIFY ALL DIMENSIONS AND CONDITIONS BEFORE DEMOLITION.

SITE/PARKING PLAN

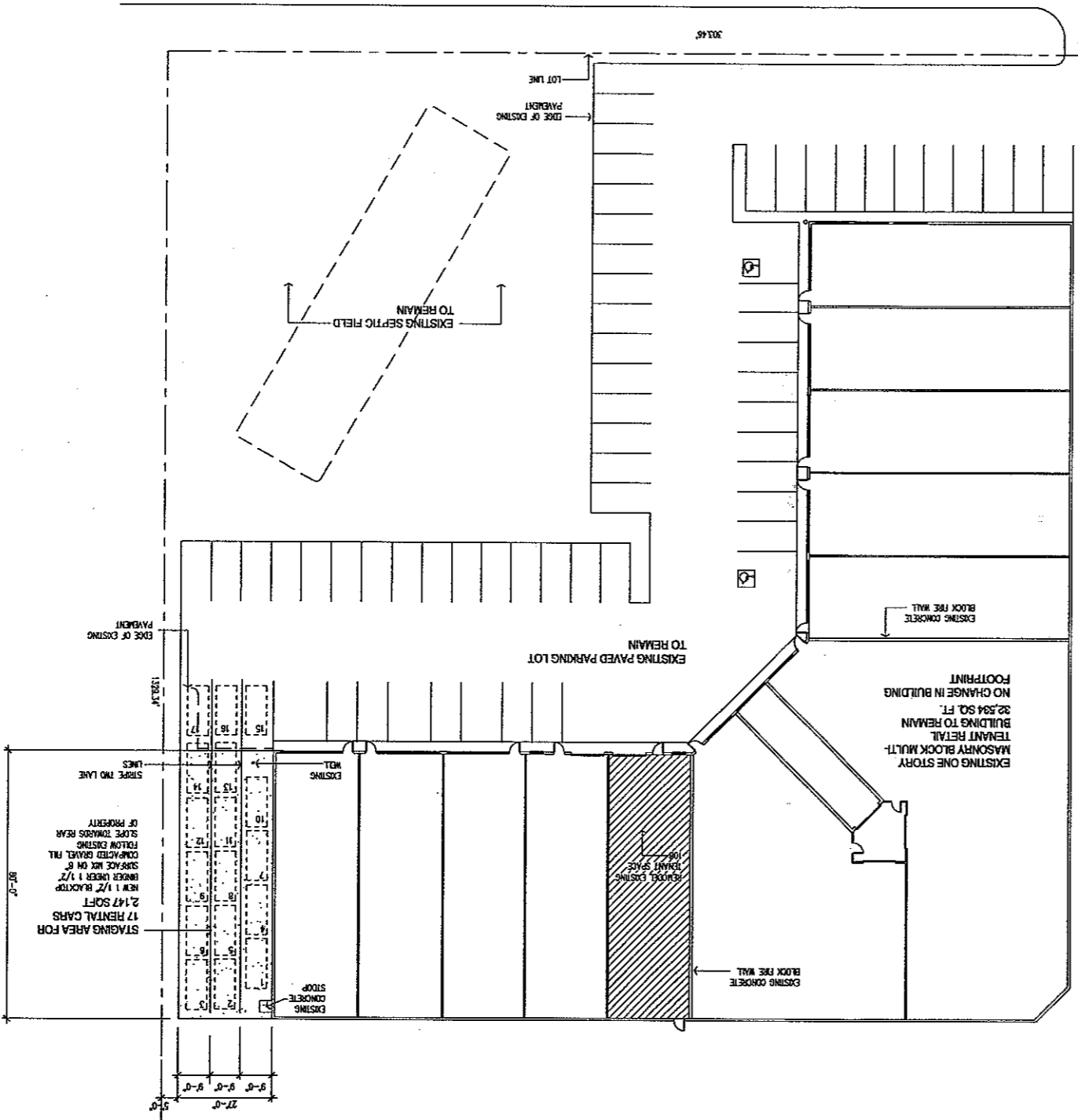
STATE ROUTE 173

SCALE: 1" = 20'-0"



ROBERT P. LIZZO ARCHITECT
INC. DEXTERS 11/20/12
of the Lake County, Illinois
where prepared under my jurisdiction and
to the best of my knowledge comply
with the building codes and ordinances

INDEX OF DRAWINGS	
A-1	PARKING AND SITE PLAN
A-2	DEMOLITION PLAN
A-3	FLOOR PLAN, ELEVATION, SECTIONS
M-1	PLUMB, RISERS, HVAC PLAN
E-1	ELECTRICAL POWERPLAN, LIGHTING PLAN



SHEET A-1 OF FIVE

DO NOT SCALE DRAWINGS
DATE OF REVISION: 12/7/2011
COMMISSION

ROBERT P. LIZZO
A R C H I T E C T
SEVEN SOUTH LAKE AVENUE
ILLINOIS 60008 (847) 232-8285

ENTERPRISE - SPACE #108
ANTIOCH CROSSING - ANTIOCH, ILLINOIS

THESE DRAWINGS AND DESIGNS ARE THE PROPERTY OF ROBERT P. LIZZO AND MAY NOT BE REPRODUCED OR REPRODUCED WITHOUT THE WRITTEN CONSENT OF ROBERT P. LIZZO



