

Statement of Work

Lake County, IL

Circuit Court

and

Journal Technologies, Inc.



Section 1 – Introduction

This Statement of Work ("SOW"), effective as of the date of last signature below sets forth the framework to implement five Jail Management System (JMS) Sheriff's Office Interfaces, which includes of the Remand Interface: two-way, Release Interface: two-way, Offender Release Interface: one-way inbound, Bond Release Interface: one-way inbound, and Notice of Hearing Interface: two one-way outbound calls for Lake County, IL Circuit Court (herein referred to as "Client"), by Journal Technologies, Inc. (hereinafter referred to as "JTI") the SOW # 23-8439 dated September 19, 2024 ("SOW") between Lake County, IL Circuit Court ("Client") and Journal Technologies, Inc. ("JTI").

This SOW describes the project's scope, its phases, assignment of responsibilities, and required deliverables by the Client and JTI.

Section 2 – Project Scope and Definition

2.1 Project Scope

The project scope includes requirements, development, testing, and delivery of the Remand Interface: two-way, Release Interface: two-way, Offender Release Interface: one-way inbound, Bond Release Interface: one-way inbound, and Notice of Hearing Interface: two one-way outbound calls. These five interfaces will be established for the new Lake County Sheriff's Office JMS system.

Attached are workflows for each identified interface

Remand Interface

- Two-way
 - eCourt will provide the jail case sentence information
 - eCourt will provide charges
 - eCourt add provide remand documents to the JMS
 - JMS will provide jail offense and confirmation of information received
- Each remand will be made available to the Sheriff's Office JMS through XML in a file share location to be determined.
 - Credentials will be required for the web service access (e.g. base URL, username, password, etc.), which will be provided by JTI.
- The Sheriff's Office JMS will determine a configurable scheduled interval to retrieve Remand information from JTI.
- Remand will be the only status the Remand Interface will look for.
- If an error occurs within the Remand interface preventing the update status remand the Sheriff's Office JMS will handle all error messaging.

Release

- Two-way
 - JMS will provide the individual release information
 - eCourt will provide charge disposition information
 - eCourt will provide charge and release documents
 - JMS will provide jail offense a confirmation of information received
- Each release will be made available to the Sheriff's Office JMS through XML in a file share location to be determined.
 - Credentials will be required for the web service access (e.g., base URL, username, password, etc.), which will be provided by JTI.
- The Sheriff's Office JMS will determine a configurable scheduled interval to retrieve Release information to JTI.
- Release will be the only status the Release Interface will look for.
- If an error occurs within the Release interface preventing a release update status, the Sheriff's Office JMS will handle all error messaging.

Offender Release

- One-way inbound
 - JMS will provide individual release information
 - JTI will update the custody records with JMS release information
- Each Offender Release will be made available to the Sheriff's Office JMS through XML in a file share location to be determined.
- Credentials will be required for the web service access (e.g. base URL, username, password, etc.), which will be provided by JTI. If an error occurs within the Offender Release interface preventing the update status of offender release, the Sheriff's Office JMS will handle all error messaging.

Bond Release

- One-way inbound
 - JMS will provide bond release information for each individual charge on a case
 - eCourt will update bond state with information received from JMS
- Each Bond Release will be made available to the Sheriff's Office JMS through XML in a file share location to be determined.
 - Credentials will be required for the web service access (e.g. base URL, username, password, etc.), which will be provided by JTI.
- If an error occurs within the Bond Release interface preventing the update status of bond release, the Sheriff's Office JMS will handle all error messaging.

Notice of Hearing

- Two one-way outbound calls
 - eCourt will provide JMS with information on hearings scheduled and add hearing transactions.
 - eCourt will provide JMS with information of hearings being canceled and delete the hearing transaction.
- Each Notice of Hearing added or deleted will be made available to the Sheriff's Office JMS through XML in a file share location to be determined.
 - Credentials will be required for the web service access (e.g. base URL, username, password, etc.), which will be provided by JTI.
- The Sheriff's Office JMS will determine a configurable scheduled interval to retrieve Notice of Hearing information from JTI.
- If an error occurs within the Notice of Hearing interface preventing the update status of hearings added or deleted, the Sheriff's Office JMS will handle all error messaging.

2.2 Out of Scope

The project will be limited to the scope of work in section 2.1. The project excludes any of the following.

- Infrastructure/database-related support
- Functional requests that alter the solution
- User interface requests regarding the look and feel of the solution.
- Customizations to existing functional solutions
- Introduction of new components, including but not limited to business rules, workflows, searches, reports, and forms.

2.3 Project Phases

The project phases will follow JTI's methodology for implementing the Remand Interface two-way, Release Interface two-way, Offender Release interface one-way (inbound), Bond Release one-way (inbound), and Notice of Hearing two one-way outbound calls. It is anticipated that upon the signature of this SOW, work on the JMS interfaces will begin. Each interface will follow the anticipated timeline, and work may overlap.

Task/Phase	Business Days
SOW Sign-Off	1
Requirements Gathering	5
Requirements Review and Sign off	5
Development	30
JTI Internal Testing	5
Client Testing *	10
JTI Review of Client Testing	5
Client Acceptance and Sign Off	2
Place in Production	1

Remand Interface

Client will provide the Interface Specification Document based on the scope of work identified in this statement of work. The document will include all information necessary to develop the interface, including:

- File layouts, sample files to be used in testing, existing specification documents, and will assist JTI with the data element mappings between the two systems.
- Other requirements such as filtering, throttling, queuing, and transaction record retention period.
- Frequency/trigger information, specification of data transport mechanism requirements, port and firewall rules, and secure networking requirements.
- Monitoring and reporting requirements, identification of exception types and processing of transactions, and bandwidth requirements based on expected transaction volumes.

Once the specification document has been completed and approved, JTI will develop the interface to the requirements in the Interface Specification Document. If the requirements deviate from the original scope of work a new statement of work may be required. Client will test and within 10 workdays report issues not in compliance with the requirements. There will be a maximum of 3 cycles for testing unless there are outstanding issues preventing the interface from being deployed to the production environment.

Release Interface

Client will provide the Interface Specification Document based on the scope of work identified in this statement of work. The document will include all information necessary to develop the interface, including:

- File layouts, sample files to be used in testing, existing specification documents, and will assist JTI with the data element mappings between the two systems.
- Other requirements such as filtering, throttling, queuing, and transaction record retention period.
- Frequency/trigger information, specification of data transport mechanism requirements, port and firewall rules, and secure networking requirements.
- Monitoring and reporting requirements, identification of exception types and processing of transactions, and bandwidth requirements based on expected transaction volumes.

Once the specification document has been completed and approved, JTI will develop the interface to the requirements in the Interface Specification Document. If the requirements deviate from the original scope of work a new statement of work may be required. Client will test and within 10 workdays report issues not in compliance with the requirements. There will be a maximum of 3 cycles for testing unless there are outstanding issues preventing the interface from being deployed to the production environment.

Offender Release Interface

Client will provide the Interface Specification Document based on the scope of work identified in this statement of work. The document will include all information necessary to develop the interface, including:

- File layouts, sample files to be used in testing, existing specification documents, and will assist JTI with the data element mappings between the two systems.
- Other requirements such as filtering, throttling, queuing, and transaction record retention period.
- Frequency/trigger information, specification of data transport mechanism requirements, port and firewall rules, and secure networking requirements.
- Monitoring and reporting requirements, identification of exception types and processing of transactions, and bandwidth requirements based on expected transaction volumes.

Once the specification document has been completed and approved, JTI will develop the interface to the requirements in the Interface Specification Document. If the requirements deviate from the original scope of work a new statement of work may be required. Client will test and within 10 workdays report issues not in compliance with the requirements. There will be a maximum of 3 cycles for testing unless there are outstanding issues preventing the interface from being deployed to the production environment.

Bond Release Interface

Client will provide the Interface Specification Document based on the scope of work identified in this statement of work. The document will include all information necessary to develop the interface, including:

- File layouts, sample files to be used in testing, existing specification documents, and will assist JTI with the data element mappings between the two systems.
- Other requirements such as filtering, throttling, queuing, and transaction record retention period.
- Frequency/trigger information, specification of data transport mechanism requirements, port and firewall rules, and secure networking requirements.
- Monitoring and reporting requirements, identification of exception types and processing of transactions, and bandwidth requirements based on expected transaction volumes.

Once the specification document has been completed and approved, JTI will develop the interface to the requirements in the Interface Specification Document. If the requirements deviate from the original scope of work a new statement of work may be required. Client will test and within 10 workdays report issues not in compliance with the requirements. There will be a maximum of 3 cycles for testing unless there are outstanding issues preventing the interface from being deployed to the production environment.

Notice of Hearing Interface

Client will provide the Interface Specification Document based on the scope of work identified in this statement of work. The document will include all information necessary to develop the interface, including:

- File layouts, sample files to be used in testing, existing specification documents, and will assist JTI with the data element mappings between the two systems.
- Other requirements such as filtering, throttling, queuing, and transaction record retention period.
- Frequency/trigger information, specification of data transport mechanism requirements, port and firewall rules, and secure networking requirements.
- Monitoring and reporting requirements, identification of exception types and processing of transactions, and bandwidth requirements based on expected transaction volumes.

Once the specification document has been completed and approved, JTI will develop the interface to the requirements in the Interface Specification Document. If the requirements deviate from the original scope of work a new statement of work may be required. Client will test and within 10 workdays report issues not in compliance with the requirements. There will be a maximum of 3 cycles for testing unless there are outstanding issues preventing the interface from being deployed to the production environment.

Section 3 – Project Cost and Billing

3.1 Cost

JTI will bill the Client an additional \$160,000 for the Sheriff's Office Interfaces. This price is valid if the SOW is signed within 45 days from the date of this SOW as indicated in Section 1 above.

3.2 Billing

The Client will be invoiced based on the following payment milestones and shall be paid in accordance with the Contract.

Milestone	Amount
Remand Interface	
Requirements Sign off	\$14,000.00
Solution Delivery	\$14,000.00
Solution Acceptance	\$8,000.00
30 days post-go-live stabilization period	\$4,000.00
Total Interface Cost	\$40,000.00

Milestone Release Interface	Amount
Requirements Sign off	\$14,000.00
Solution Delivery	\$14,000.00
Solution Acceptance	\$8,000.00
30 days post-go-live stabilization period	\$4,000.00
Total Interface Cost	\$40,000.00

Milestone Offender Release Interface	Amount
Requirements Sign off	\$7,000.00
Solution Delivery	\$7,000.00
Solution Acceptance	\$4,000.00
30 days post-go-live stabilization period	\$2,000.00
Total Interface Cost	\$20,000.00

Milestone Bond Release	Amount
Requirements Sign off	\$7,000.00
Solution Delivery	\$7,000.00
Solution Acceptance	\$4,000.00
30 days post-go-live stabilization period	\$2,000.00
Total Interface Cost	\$20,000.00

Milestone Notice of Hearing	Amount
Requirements Sign off	\$14,000.00
Solution Delivery	\$14,000.00
Solution Acceptance	\$8,000.00
30 days post-go-live stabilization period	\$4,000.00
Total Interface Cost	\$40,000.00

Section 4 – Assumptions

Implementation of the Sheriff's Office Interfaces for the Client is per the following assumptions:

- This project assumes that the current exchanges listed above will be modified to work with the new JMS vendor. Any additional exchanges identified will incur additional costs and require a separate statement of work.
- JTI will use the interface requirements from the previous Sheriff's Office vendor as a starting point for the Client's review.
- The Client will provide new layouts for each Sheriff's Office exchange listed in this

SOW.

- The Client will handle all communication with the third-party, interface vendors.
- The Client will provide adequate resources to review and confirm the delivered requirements.
- Testing of the interfaces will take place in the Client's AWS eCourt UAT environment.
- The Client will provide adequate resources for testing of the delivered interfaces. There will be three (3) iterations of testing for each of the interfaces.
- The Client will sign-off on the interfaces before go-live.

Section 5 – Project Management

JTI will keep the Client updated on the status of the Sheriff's Office Interfaces on a regular basis. The Client will have access to the Support Portal to view updates on submitted items.

IN WITNESS WHEREOF, the parties have caused this instrument to be duly executed as of the date last written below.

Erin Cartwright-Weinstein
Clerk of Court
18 N. County Street
Waukegan, IL 60028

Date



09/19/2024 9:08 PM

Jon Peek, Senior Director of Professional
Services
Journal Technologies, Inc.

Date

Lake County and Journal Technologies Jail Management Interfaces SOW Attachment 1

Diagram #1 - Remand

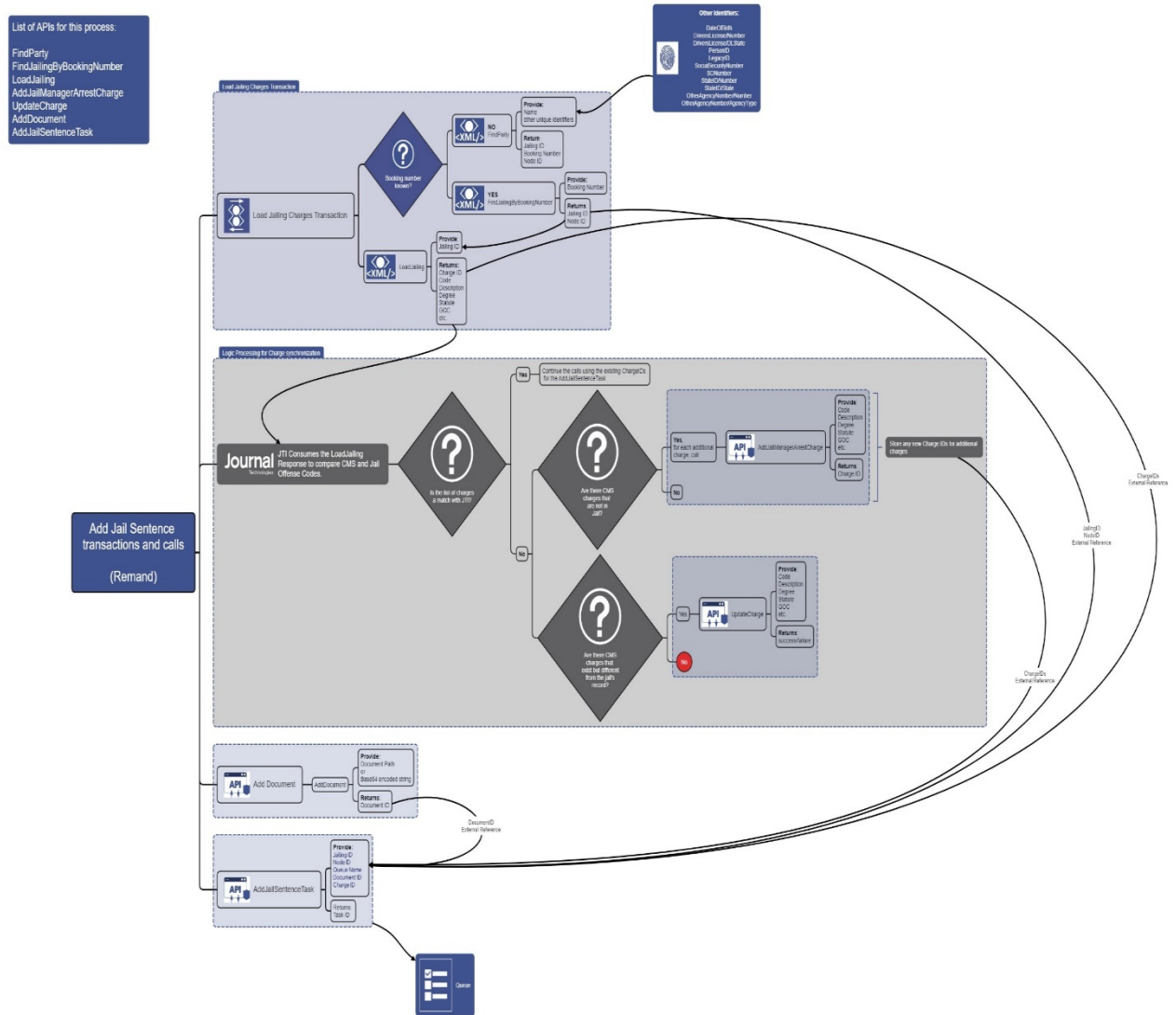


Diagram #2 - Release

- List of APIs for this process:
- FindParty
 - FindJailingByBookingNumber
 - LoadJailing
 - AddJailManagerArrestCharge
 - UpdateCharge
 - AddJailChargeDisposition
 - AddWorkflowTaskInternal
 - AddDocument
 - LinkDocument

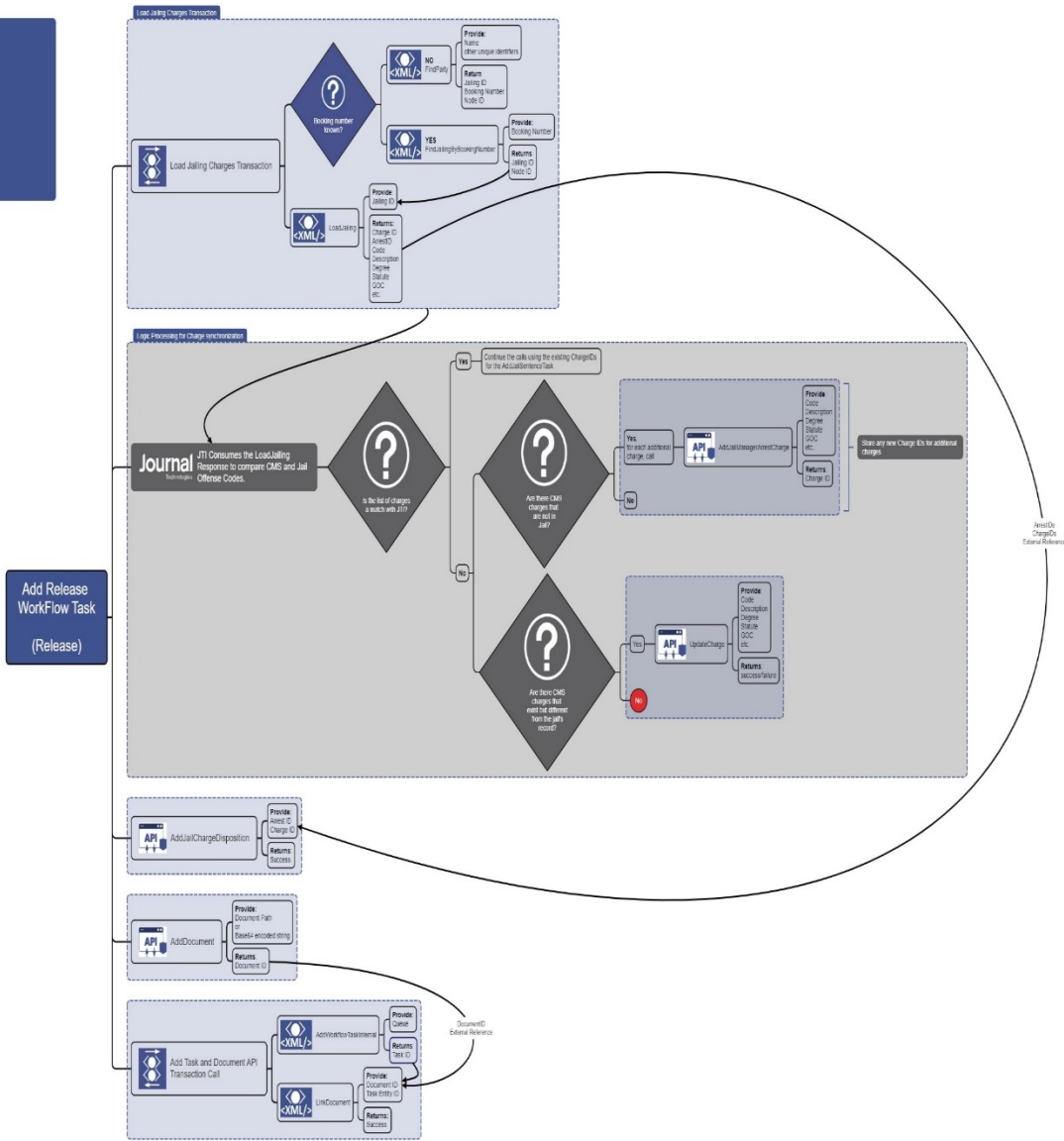


Diagram #3 - Offender Release

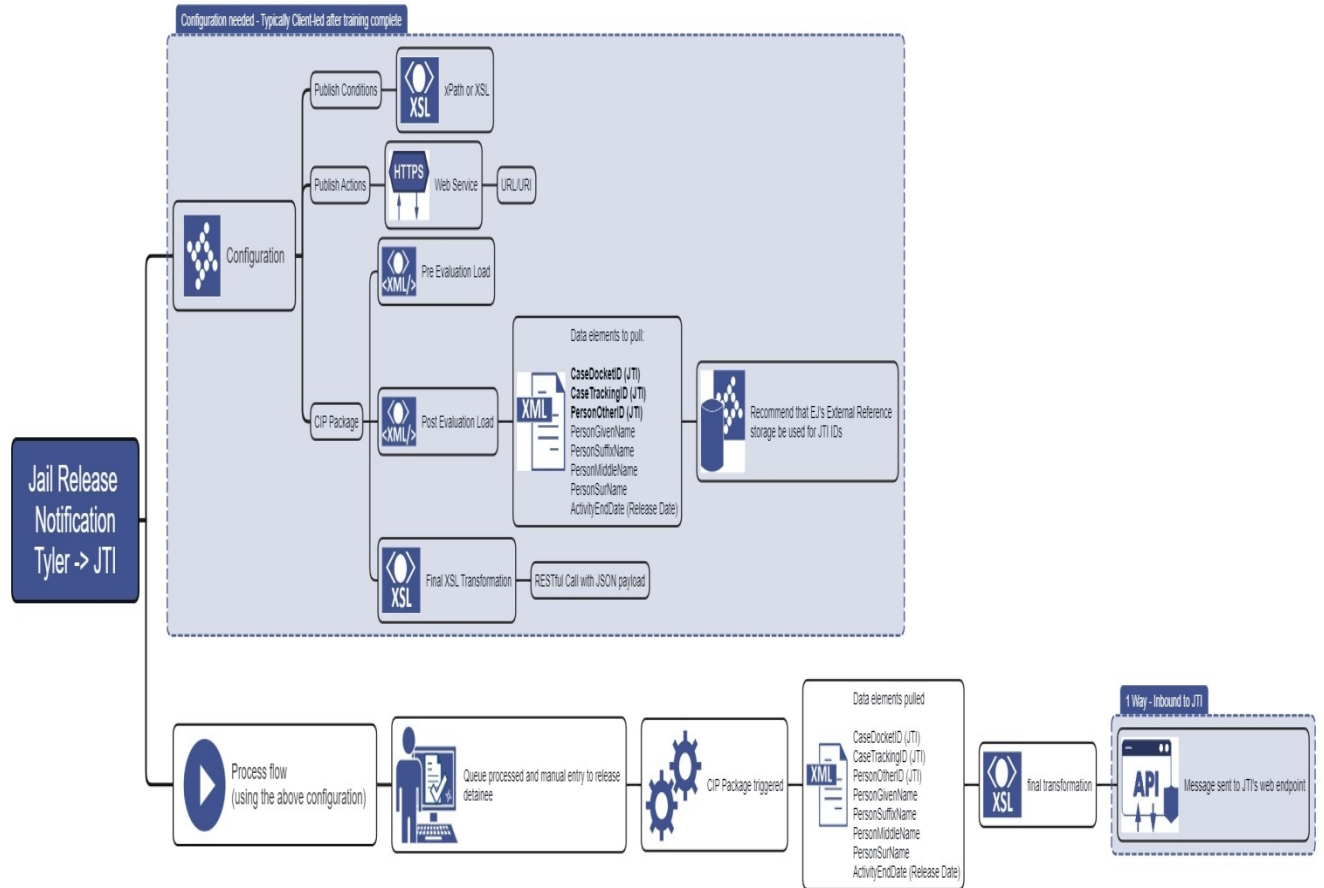


Diagram #4 - Bond Release

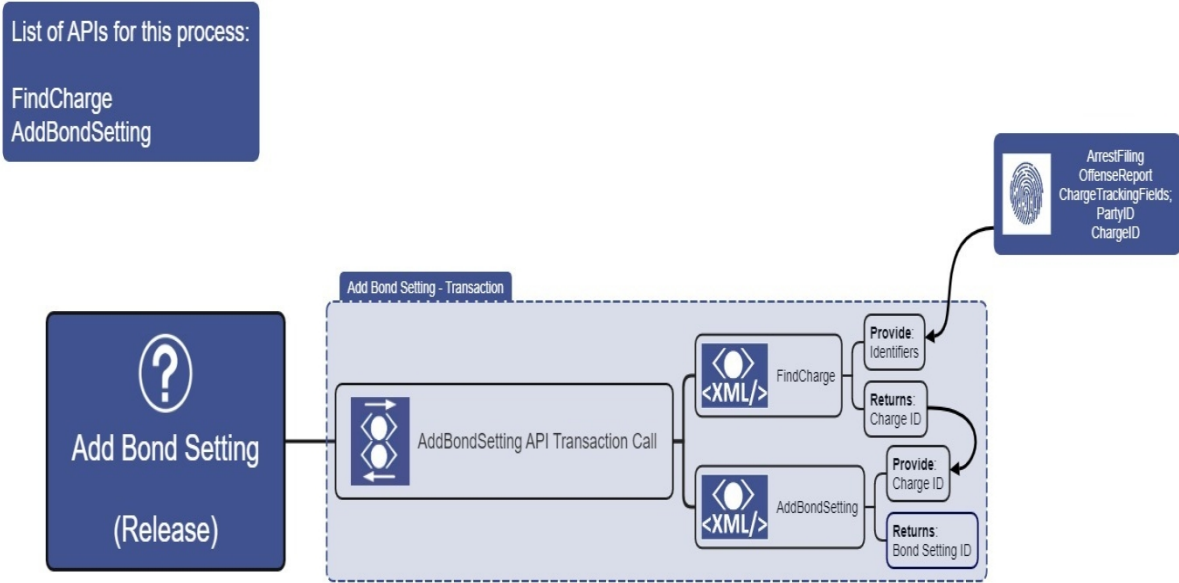


Diagram #5 - Notice of Hearings

- List of APIs for this process:
- AddExternalReference
 - FindParty
 - FindJailingByBookingNumber
 - GetExternalReference
 - AddJailingHearing
 - DeleteJailingHearing

Other Identifiers:

- DateOfBirth
- DiversionLicenseNumber
- DiversionLicenseID_State
- PersonID
- LegacyID
- SocketSecurityNumber
- SONumber
- StateID_Number
- StateID_State
- OtherAgencyNumber/Number
- OtherAgencyNumber/AgencyType

