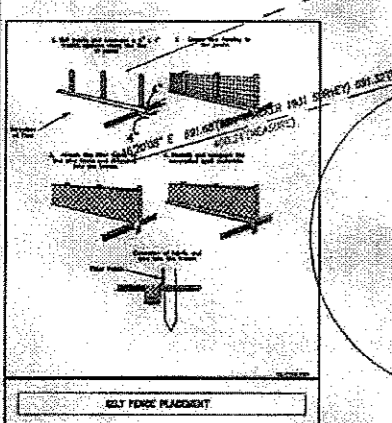


TILLOTSON SUBDIVISION
DOCUMENT NO. 1072385

SYMBOLS LEGEND

EXISTING	PROPOSED



REGULATION AND EROSION CONTROL NOTES

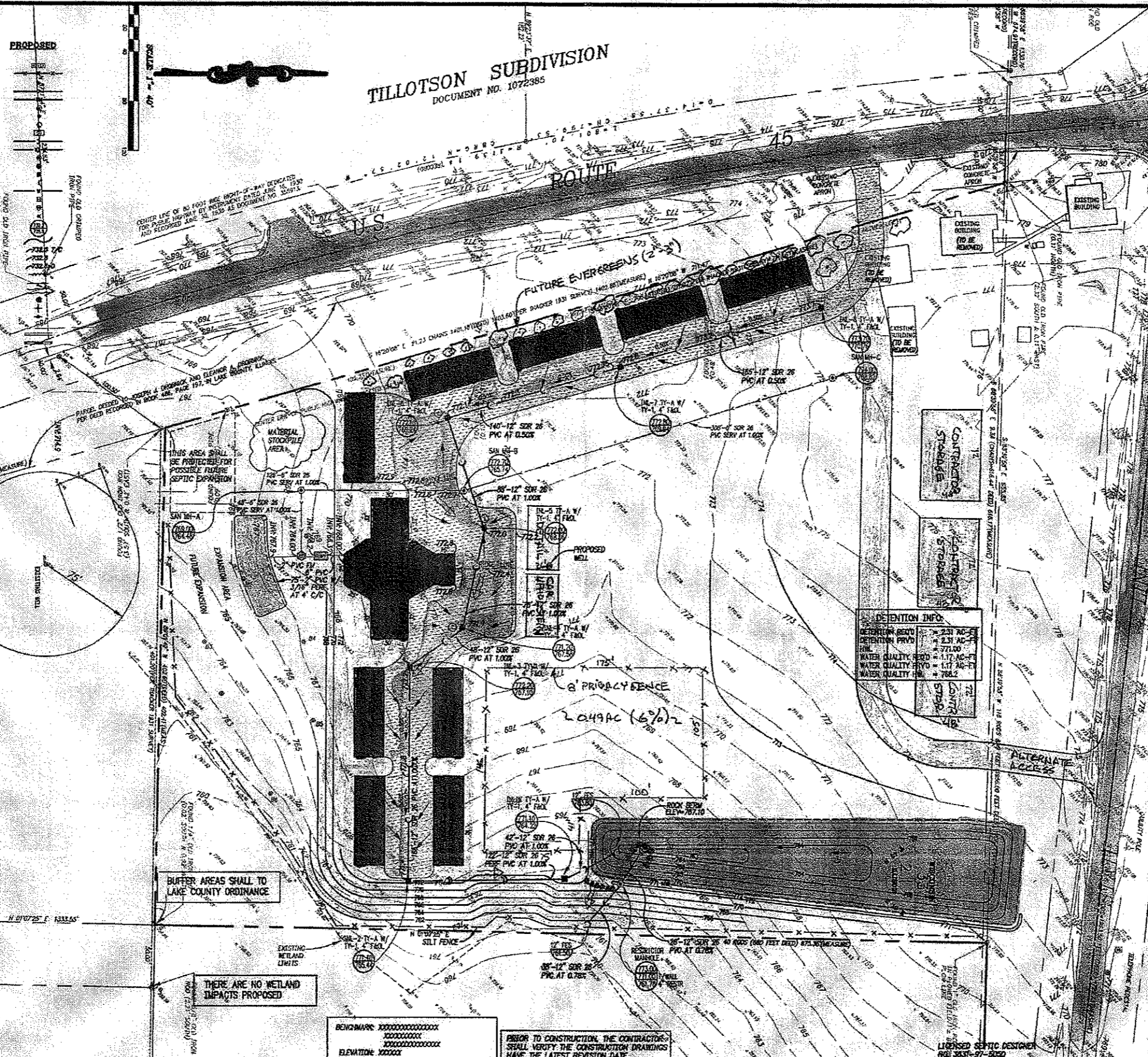
1. ALL EROSION CONTROL MEASURES SHALL BE CONSTRUCTED IN ACCORDANCE WITH THE LATEST EDITIONS OF THE ILLINOIS EROSION CONTROL MANUAL AND THE ILLINOIS SILT FENCE MANUAL.
2. EROSION CONTROL MEASURES SHALL BE CONSTRUCTED PRIOR TO THE COMMENCEMENT OF ANY EXCAVATION OR FILLING OPERATIONS.
3. EROSION CONTROL MEASURES SHALL BE MAINTAINED THROUGHOUT THE CONSTRUCTION PERIOD.
4. EROSION CONTROL MEASURES SHALL BE REMOVED OR MODIFIED AS NECESSARY TO ACCOMMODATE THE PROGRESS OF CONSTRUCTION.
5. EROSION CONTROL MEASURES SHALL BE CONSTRUCTED TO PREVENT EROSION OF THE SOIL SURFACE.
6. EROSION CONTROL MEASURES SHALL BE CONSTRUCTED TO PREVENT SEDIMENTATION OF ADJACENT AREAS.
7. EROSION CONTROL MEASURES SHALL BE CONSTRUCTED TO PREVENT POLLUTION OF ADJACENT AREAS.
8. EROSION CONTROL MEASURES SHALL BE CONSTRUCTED TO PREVENT DAMAGE TO ADJACENT AREAS.
9. EROSION CONTROL MEASURES SHALL BE CONSTRUCTED TO PREVENT OBSTRUCTION OF ADJACENT AREAS.
10. EROSION CONTROL MEASURES SHALL BE CONSTRUCTED TO PREVENT INTERFERENCE WITH ADJACENT AREAS.

JOINT UTILITY LOCATING INFORMATION FOR EXCAVATORS

Call 48 hours before you dig
(Excluding Sat., Sun. & Holidays)

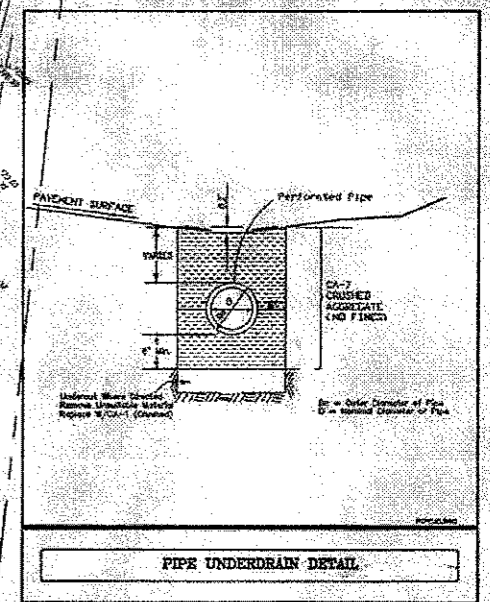
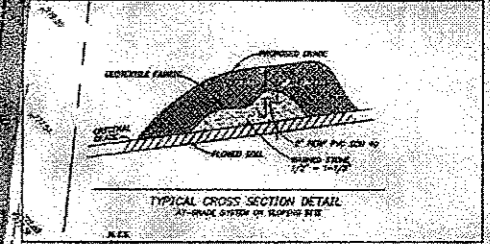
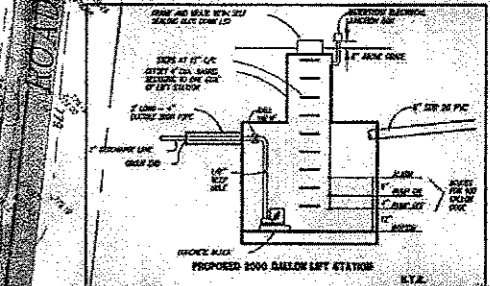
1-800-892-0123

TEMP



GENERAL NOTES

1. PROPOSED 1000 GALLON, 2 COMPARTMENT SEPTIC TANK WITH 2" ZEPHYR FILTER.
2. SEPTIC CONTRACTOR SHALL VERIFY ALL ELEVATIONS, DIMENSIONS AND BELLS PRIOR TO CONSTRUCTION.
3. DESIGN DOES NOT GUARANTEE TROUBLE FREE SERVICE. PROPER INSTALLATION AND MAINTENANCE IS REQUIRED.
4. EXISTING TREES AND BRUSH SHALL BE REMOVED AS NECESSARY.
5. THE 2" FORCE MAIN SHALL BE SURROUNDED WITH 6" GRANULAR TRENCH SANDFILL.
6. PROPOSED 1000 GALLON LIFT STATION WITH HYDRA-MATIC EFFLUENT PUMP SW 33, 100 GALLON DISE.



FRAUENHOFER ENGINEERING ASSOCIATES, P.C.

ROBERT J. FRAUENHOFER
ILLINOIS REGISTERED PROFESSIONAL ENGINEER
002-048767
EXPIRATION DATE: 11-30-2007

FRAUENHOFER ENGINEERING ASSOCIATES

Consulting Civil Engineers

11 N. Skokie Highway, Suite 112 • Lake Bluff, Illinois • 60044
(847) 735 - 8812 FAX (847) 735 - 8813

DATE	REVISIONS	BY	CHKD
3-27-07	GRADING REVISED, ADDED SILT FENCE AND NOTES PER ADJ.		

GUNDERSON PROPERTY - 43441 NORTH HIGHWAY 45

LAKE COUNTY

SITE PLAN

DATE: 3-10-07
SCALE: 1"=40'