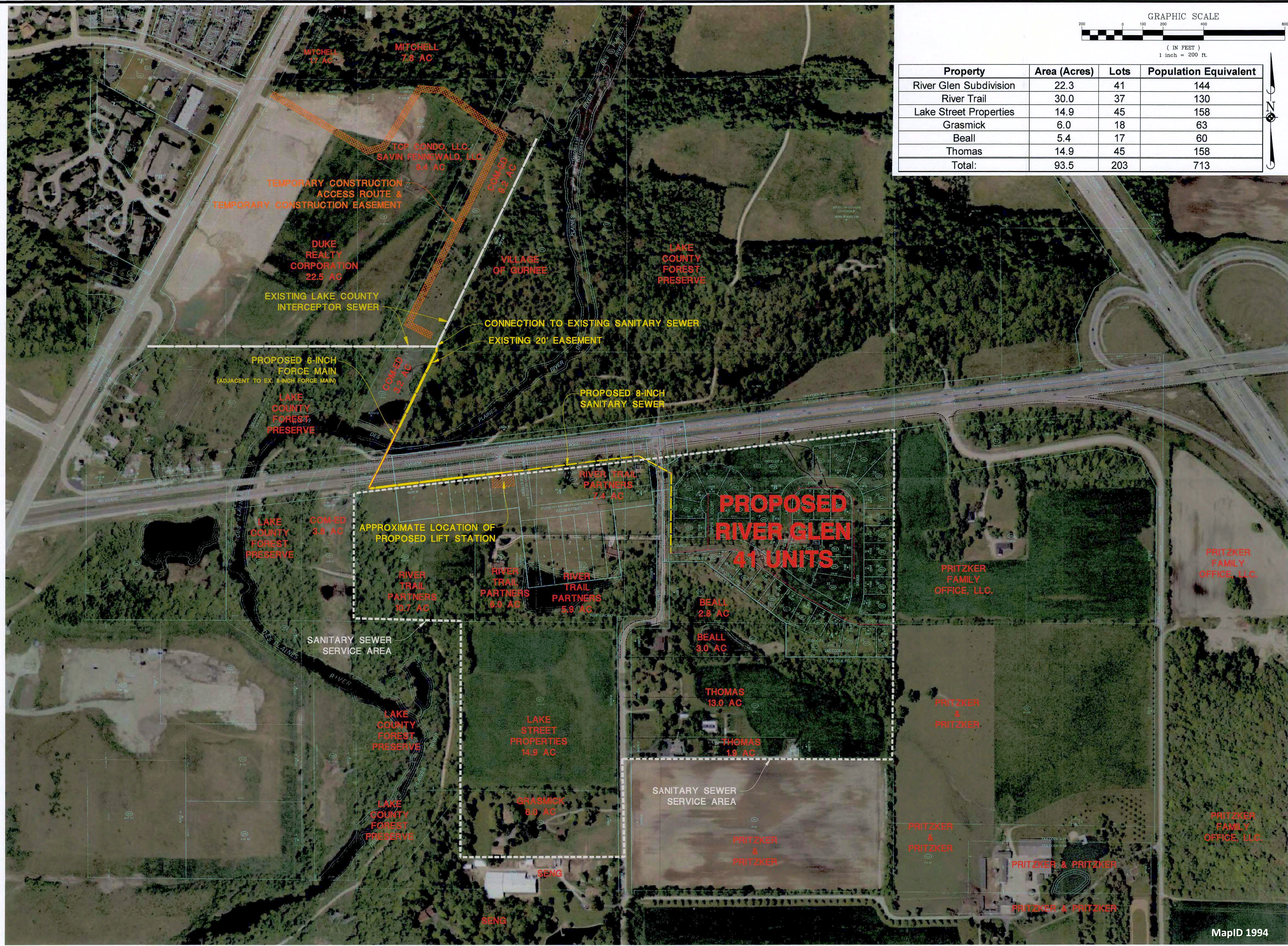


Property	Area (Acres)	Lots	Population Equivalent
River Glen Subdivision	22.3	41	144
River Trail	30.0	37	130
Lake Street Properties	14.9	45	158
Grasmick	6.0	18	63
Beall	5.4	17	60
Thomas	14.9	45	158
Total:	93.5	203	713



DATE	
REVISION	
NO.	
DESCRIPTION	
DATE	
NO.	
DESCRIPTION	
DATE	
NO.	
DESCRIPTION	

Manhard CONSULTING LTD.
 300 Waukegan Avenue, Suite 100, Waukegan, IL 60087
 Civil Engineers - Surveyors - Water Resources Engineers - Water & Wastewater Engineers
 Construction Managers - Environmental Scientists - Landscape Architects - Planners

RIVER GLEN SUBDIVISION
CITY OF WAUKEGAN, ILLINOIS
PROPOSED SANITARY SEWER EXHIBIT

RECEIVED
 JUL 19 2010
 WATERS & SEWER DIVISION
 PUBLIC WORKS

PROJ. NO.: SES
 PROJ. AREA: ADR
 DRAWN BY: ADR
 DATE: 11/25/08
 SCALE: 1"=200'

SHEET
1 OF 1

ICCWK 062019

February 4, 2009 - 08:35 - Dwg Name: P:\ICCWK\Wm\Wm\City\Wm\Domestic\Sanitary - Overall - 020309.dwg - Updated By: Jsteban

MapID 1994