

The Joint Commission

National Patient Safety Goals

2026 Ambulatory Care

OVERVIEW

# Current Accreditations

## Ambulatory Care

- Primary Care Medical Home Certificate (PCMH)



# Governing Council Presentations

Joint Commission Timeline (2026)

Last Survey: November 7-9, 2023

Survey Window: May 2026 – Nov 2026

✓April: Overview

**May: National Patient Safety Goals (NPSG)**

June: Chapter overviews part 1

July: Chapter overviews part 2

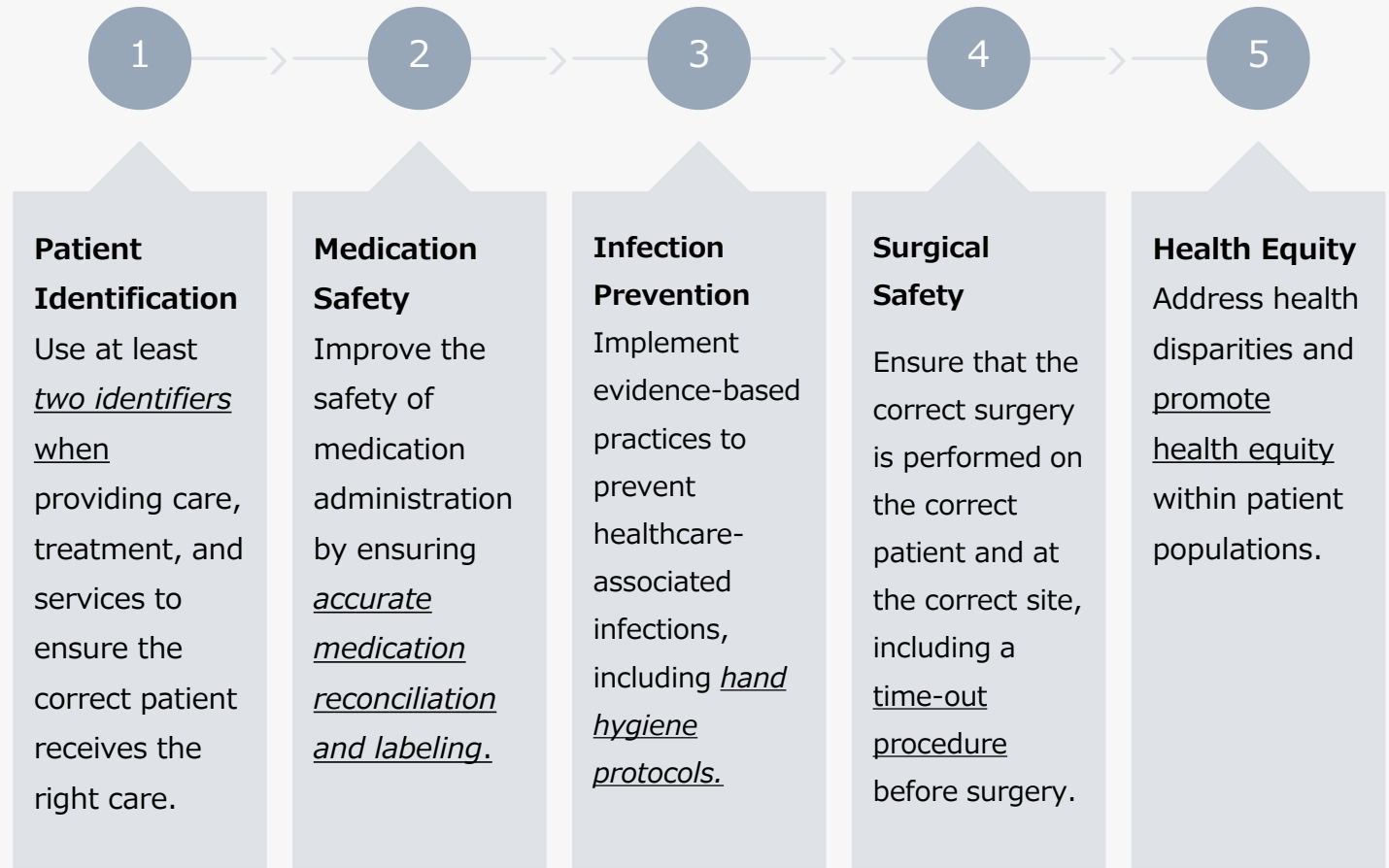
August: Primary Care Medical Home (PCMH)

Sept: Survey overview/What is GC's role in survey

Oct forward: Review sessions until survey

# National Patient Safety Goals (NPSGs) 2026

The Joint Commission develops annual goals to address critical, high-risk patient safety issues.



# NPSG #1 - Identify Patients Correctly

## NPSG.01.01.01

- Use at least two patient identifiers to make sure that patients get the correct medicine and treatment.

## LCHD/CHC

- We use Name and Date of Birth.
- Patient Verification policy.
- Medication Management Policy
- Time Out policy.

# NPSG #2 - Use Medicines Safely

**NPSG.03.04.01 NPSG.03.05.01  
NPSG.03.06.01**

- Label all medications.
- Take extra care with patients who take blood thinners.
- Document and communicate accurate information about a patient's medicines.
- Review a patient's medications at each visit.
- Educate patients on their medications.

## LCHD/CHC

- We conduct medication reconciliation at each visit.
- We label patient medication and use look alike sound alike and hazardous medication labels to prevent medication errors.
- We educate patients on their medications.
- Medication Management policy.
- Anticoagulation Therapy policy.

# NPSG #3 - Prevent Infection

## NPSG.07.01.01

- Use the hand cleaning guidelines from the CDC or the WHO.
- Set goals for improving hand hygiene.

### LCHD/CHC

- We use CDC hand hygiene guidelines.
- We conduct hand hygiene surveillance.
- We include a hand hygiene goal in our infection control plan every year.
- Hand Hygiene policy.

# NPSG #4 - Prevent Mistakes During Procedures

## NPSG.01.01.01

- Ensure the correct procedure, correct patient, and correct place on the patient's body.
- Mark the correct place where the procedure is to be done.
- Pause before the procedure to make sure that a mistake is not being made.

## LCHD/CHC

- We use two patient identifiers (name and date of birth) to identify our patients.
- We perform a "Time Out" before each procedure.
- Time Out policy.

# NPSG #5 - Health Equity

Address health disparities and promote health equity within patient populations

## NPSG.16.01.01

- Improving health outcomes for all is a quality and patient safety priority.
- Health care disparities are identified and a written plan describes ways to improve health outcomes for all.

### Health Equity:

CY2024 External Referrals

Uninsured Patients: 8% completed

## Access Lake

**Partnership** between:

- LCHD/CHC
- Erie Health Center
- Advocate
- City of Hope
- Endeavor
- Northwestern Medicine

**Goal:** Enhance the services offered within the LCHD FQHC setting and improve efficiencies and completion of Specialty Care Referrals.

**LCHD/CHC Primary Care Provider Education**

**Health System Financial Aid Completion**