

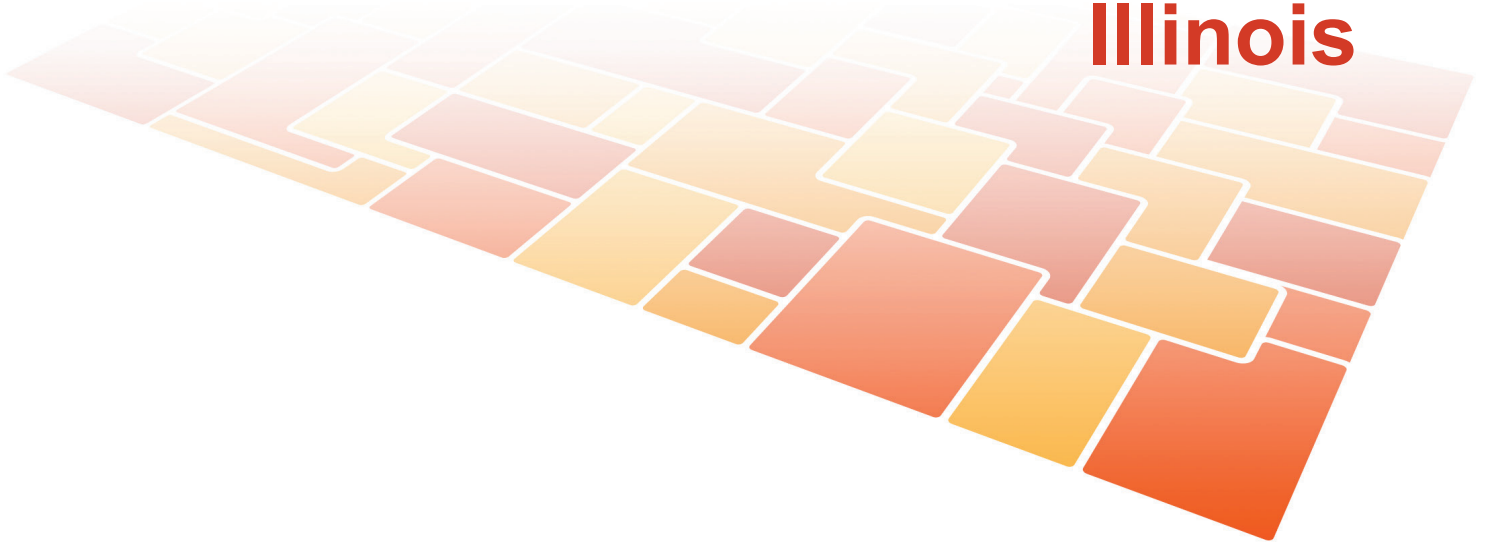


# County Health Rankings

Mobilizing Action Toward Community Health

2010

**Illinois**



Robert Wood Johnson Foundation



UNIVERSITY OF WISCONSIN

**Population Health Institute**

*Translating Research into Policy and Practice*

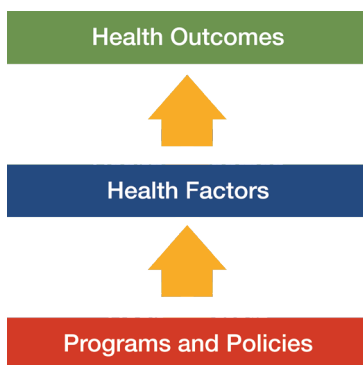
## Introduction

Where we live matters to our health. The health of a community depends on many different factors, including quality of health care, individual behavior, education and jobs, and the environment. We can improve a community's health through programs and policies. For example, people who live in communities with ample park and recreation space are more likely to exercise, which reduces heart disease risk. People who live in communities with smoke-free laws are less likely to smoke or to be exposed to second-hand smoke, which reduces lung cancer risk.

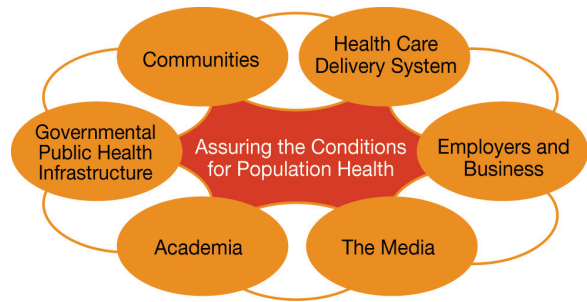
The problem is that there are big differences in health across communities, with some places being much healthier than others. And up to now, it has been hard to get a standard way to measure how healthy a county is and see where they can improve.

The Robert Wood Johnson Foundation and the University of Wisconsin Population Health Institute are pleased to present the 2010 *County Health Rankings*, a collection of 50 reports that reflect the overall health of counties in every state across the country. For the first time, counties can get a snapshot of how healthy their residents are by comparing their overall health and the factors that influence their health, with other counties in their state. This will allow them to see county-to-county where they are doing well and where they need to improve. Everyone has a stake in community health. We all need to work together to find solutions. The *County Health Rankings* serve as both a call to action and a needed tool in this effort.

All of the *County Health Rankings* are based upon this model of population health improvement:



In this model, health outcomes are measures that describe the current health status of a county. These health outcomes are influenced by a set of health factors. These health factors and their outcomes may also be affected by community-based programs and policies designed to alter their distribution in the community. Counties can improve health outcomes by addressing all health factors with effective, evidence-based programs and policies.



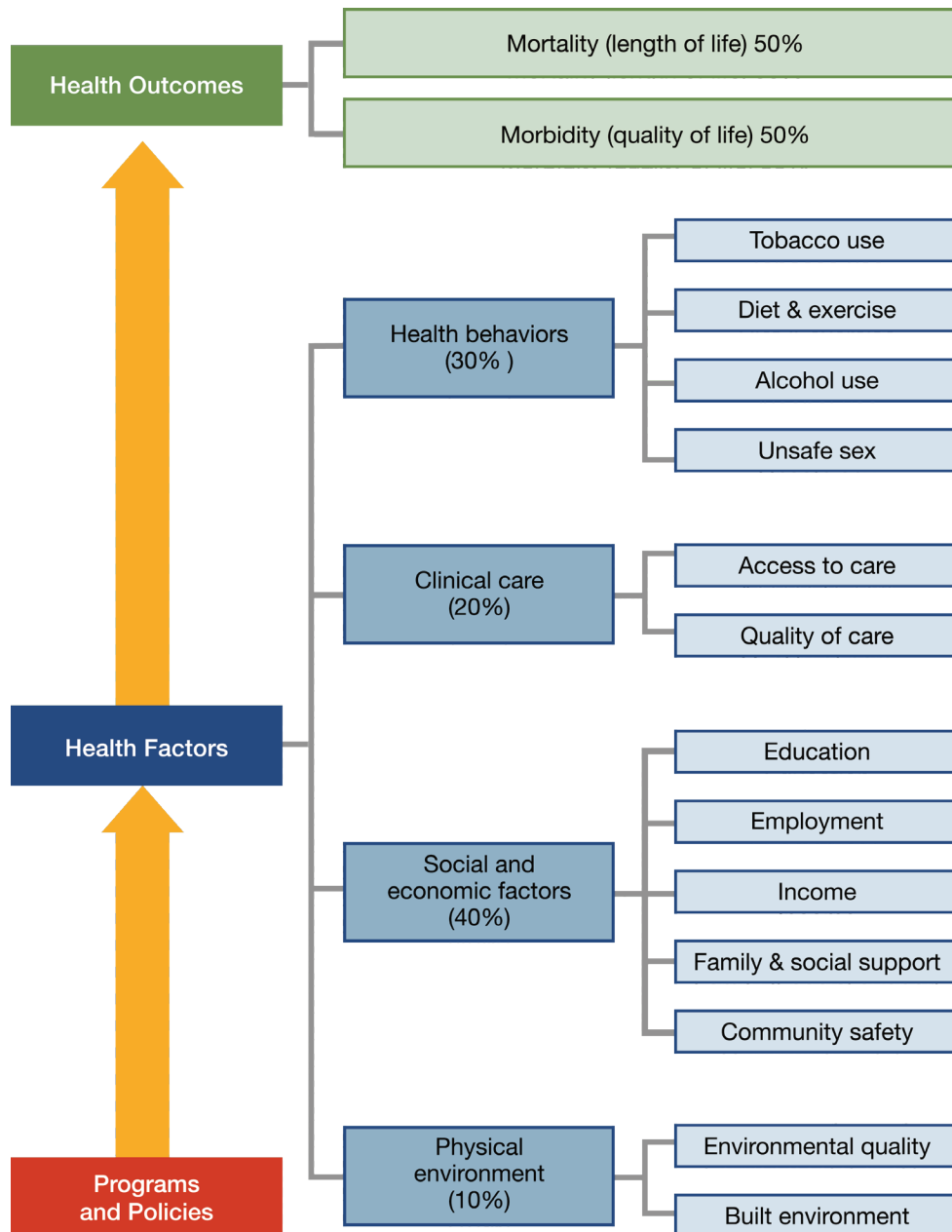
Institute of Medicine, 2002

To compile the *Rankings*, we built on our prior work in Wisconsin, worked closely with staff from the Centers for Disease Control and Prevention and Dartmouth College, and obtained input from a team of expert advisors. Together we selected a number of population health measures based on scientific relevance, importance, and availability of data at the county level. For a more detailed explanation of the choice of measures, see [www.countyhealthrankings.org](http://www.countyhealthrankings.org).

## The Rankings

This report ranks Illinois counties according to their summary measures of **health outcomes** and **health factors**, as well as the components used to create each summary measure. The figure below depicts the structure of the *Rankings* model. Counties receive a rank for each population health component; those having high ranks (e.g., 1 or 2) are estimated to be the “healthiest.”

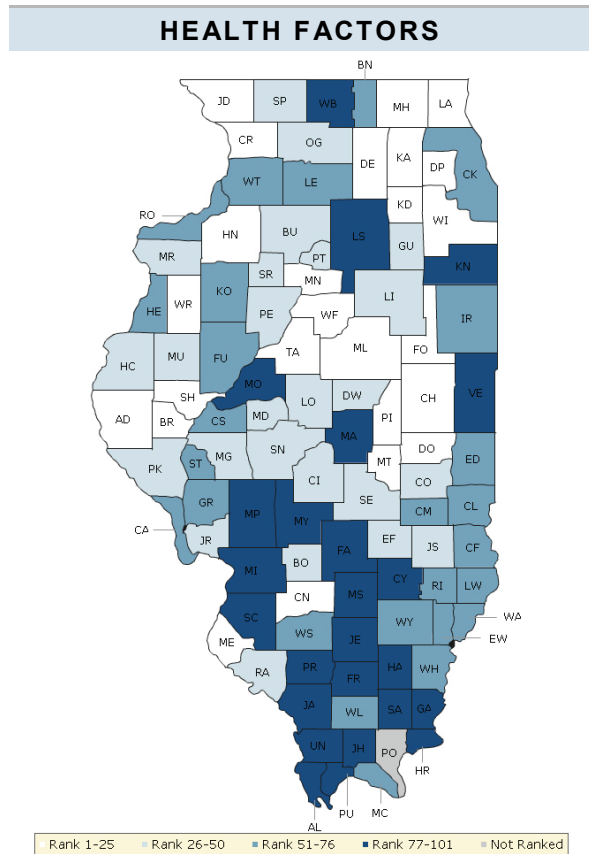
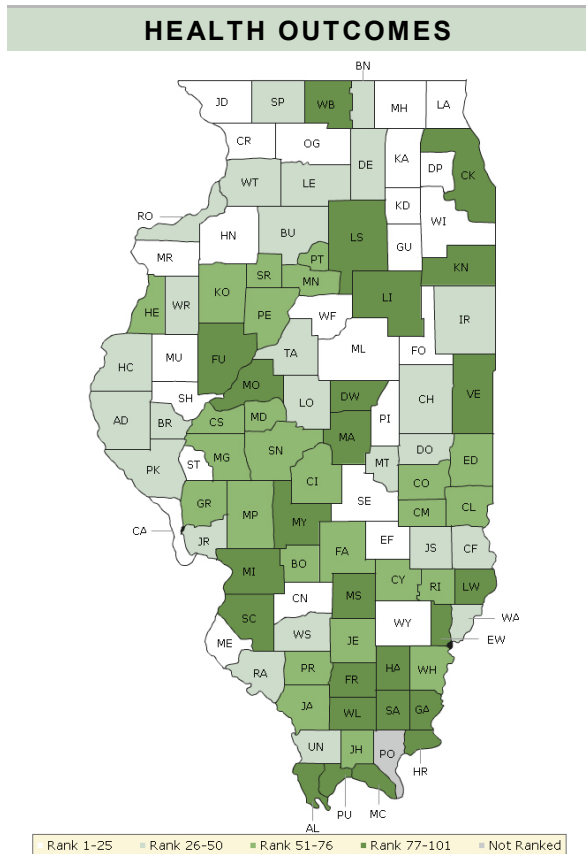
Our summary **health outcomes** rankings are based on an equal weighting of mortality and morbidity measures. The summary **health factors** rankings are based on weighted scores of four types of factors: behavioral, clinical, social and economic, and environmental. The weights for the factors (shown in parentheses in the figure) are based upon a review of the literature and expert input but represent just one way of combining these factors.



County Health Rankings model ©2010 UWPHI

The maps on this page display Illinois's counties divided into groups by health rank. The lighter colors indicate better performance in the respective summary rankings. The green map shows the distribution of summary health outcomes. The blue displays the distribution of the summary rank for health factors.

Maps help locate the healthiest and least healthy counties in the state. The health factors map appears similar to the health outcomes map, showing how health factors and health outcomes are closely related.



## Summary Health Outcomes & Health Factors Rankings

Counties receive two summary ranks:

- Health Outcomes
- Health Factors

Each of these ranks represents a weighted summary of a number of measures.

Health outcomes represent how healthy a county is while health factors are what influences the health of the county.

Rank	Health Outcomes	Rank	Health Factors
1	Kendall	1	DuPage
2	DuPage	2	Kendall
3	Woodford	3	Lake
4	Jo Daviess	4	Monroe
5	McHenry	5	Woodford
6	Henry	6	McLean
7	McDonough	7	McHenry
8	Mercer	8	Adams
9	Carroll	9	Piatt
10	Lake	10	Will
11	Kane	11	Tazewell
12	Grundy	12	DeKalb
13	Effingham	13	Moultrie
14	Monroe	14	Clinton
15	McLean	15	Henry
16	Piatt	16	Schuyler
17	Will	17	Douglas
18	Scott	18	Carroll
19	Clinton	19	Kane
20	Ford	20	Marshall
21	Calhoun	21	Warren
22	Schuyler	22	Jo Daviess
23	Shelby	23	Brown
24	Ogle	24	Ford
25	Wayne	25	Champaign
26	Brown	26	Menard
27	DeKalb	27	Effingham
28	Warren	28	Coles
29	Boone	29	Ogle
30	Iroquois	30	Hancock
31	Champaign	31	Stark
32	Pike	32	McDonough
33	Stephenson	33	Grundy
34	Bureau	34	De Witt
35	Randolph	35	Bureau
36	Douglas	36	Logan
37	Hancock	37	Pike
38	Logan	38	Putnam
39	Rock Island	39	Mercer
40	Adams	40	Jersey

Rank	Health Outcomes	Rank	Health Factors
41	Lee	41	Christian
42	Washington	42	Morgan
43	Wabash	43	Bond
44	Crawford	44	Randolph
45	Jersey	45	Jasper
46	Tazewell	46	Sangamon
47	Whiteside	47	Shelby
48	Union	48	Peoria
49	Moultrie	49	Stephenson
50	Jasper	50	Livingston
51	Henderson	51	White
52	Perry	52	Scott
53	Knox	53	Lee
54	Johnson	54	Boone
55	Clay	55	Wabash
56	Coles	56	Richland
57	Putnam	57	Cass
58	Richland	58	Edwards
59	Bond	59	Cook
60	Cumberland	60	Washington
61	Macoupin	61	Rock Island
62	Marshall	62	Clark
63	Morgan	63	Calhoun
64	Menard	64	Wayne
65	Fayette	65	Knox
66	Sangamon	66	Whiteside
67	Christian	67	Crawford
68	Clark	68	Cumberland
69	Stark	69	Edgar
70	Edgar	70	Massac
71	Peoria	71	Williamson
72	Cass	72	Fulton
73	Jackson	73	Lawrence
74	Greene	74	Iroquois
75	White	75	Henderson
76	Jefferson	76	Greene
77	Winnebago	77	Mason
78	Madison	78	Montgomery
79	Mason	79	Clay
80	LaSalle	80	Union
81	Cook	81	Johnson
82	Montgomery	82	Saline
83	De Witt	83	Winnebago
84	Kankakee	84	Macoupin
85	Livingston	85	Jefferson
86	Fulton	86	Madison
87	Macon	87	Hamilton
88	Williamson	88	Kankakee
89	Hamilton	89	Jackson
90	Lawrence	90	Fayette

Rank	Health Outcomes	Rank	Health Factors
91	Massac	91	LaSalle
92	Gallatin	92	Perry
93	Marion	93	Macon
94	St. Clair	94	Marion
95	Franklin	95	Gallatin
96	Vermilion	96	St. Clair
97	Edwards	97	Vermilion
98	Saline	98	Franklin
99	Pulaski	99	Hardin
100	Alexander	100	Pulaski
101	Hardin	101	Alexander

**Not Ranked:** Pope

## Health Outcomes Rankings

The summary health outcomes ranking is based on measures of mortality and morbidity. Each county's ranks for mortality and morbidity are displayed here. The mortality rank, representing length of life, is based on a measure of premature death: the years of potential life lost prior to age 75.

The morbidity rank is based on measures that represent health-related quality of life and birth outcomes. We combine four morbidity measures: self-reported fair or poor health, poor physical health days, poor mental health days, and the percent of births with low birthweight.

Rank	Mortality	Rank	Morbidity
1	DuPage	1	Ford
2	Kendall	2	Jo Daviess
3	Lake	3	Kendall
4	McHenry	4	Washington
5	Woodford	5	Iroquois
6	Piatt	6	Woodford
7	Kane	7	Mercer
8	Will	8	Carroll
9	Monroe	9	Schuyler
10	Henry	10	Clinton
11	Boone	11	Grundy
12	McDonough	12	Effingham
13	DeKalb	13	McDonough
14	McLean	14	Douglas
15	Scott	15	Henry
16	Carroll	16	Warren
17	Jo Daviess	17	Hancock
18	Mercer	18	DuPage
19	Calhoun	19	McHenry
20	Logan	20	Bureau
21	Grundy	21	Wayne
22	Effingham	22	Cumberland
23	Ogle	23	Union
24	Rock Island	24	Randolph
25	Champaign	25	Shelby
26	Adams	26	Calhoun
27	Pike	27	Brown
28	Shelby	28	McLean
29	Perry	29	Monroe
30	Brown	30	Whiteside
31	Wabash	31	Ogle
32	Crawford	32	Scott
33	Wayne	33	Clark
34	Marshall	34	Stephenson
35	Moultrie	35	Kane
36	Bond	36	Clay
37	Jersey	37	Henderson
38	Clinton	38	Stark
39	Stephenson	39	Lee
40	Jefferson	40	Pike



Rank	Mortality	Rank	Morbidity
41	Lee	41	Champaign
42	Schuyler	42	Tazewell
43	Jasper	43	Will
44	Warren	44	Lake
45	Morgan	45	Edwards
46	Randolph	46	Johnson
47	Tazewell	47	Richland
48	Bureau	48	Knox
49	Knox	49	Coles
50	Hancock	50	Piatt
51	Sangamon	51	Menard
52	Macoupin	52	Putnam
53	Johnson	53	Jersey
54	Winnebago	54	Rock Island
55	Fayette	55	Adams
56	Ford	56	Edgar
57	Henderson	57	Jasper
58	Coles	58	DeKalb
59	Douglas	59	Wabash
60	Cook	60	Peoria
61	Whiteside	61	Crawford
62	Putnam	62	Logan
63	Jackson	63	Boone
64	Madison	64	Mason
65	Iroquois	65	Montgomery
66	Clay	66	Christian
67	Union	67	Moultrie
68	Christian	68	LaSalle
69	Richland	69	Macoupin
70	Livingston	70	Fayette
71	Cass	71	Cass
72	White	72	Lawrence
73	Menard	73	Greene
74	Greene	74	Kankakee
75	De Witt	75	White
76	Fulton	76	Perry
77	Peoria	77	Sangamon
78	Edgar	78	Morgan
79	Macon	79	Jackson
80	Williamson	80	De Witt
81	Kankakee	81	Bond
82	LaSalle	82	Madison
83	Washington	83	Marshall
84	Mason	84	Hamilton
85	Cumberland	85	Macon
86	Stark	86	Winnebago
87	Montgomery	87	Cook
88	Hamilton	88	Williamson
89	Clark	89	Franklin
90	Massac	90	Fulton

Rank	Mortality	Rank	Morbidity
91	Vermilion	91	Livingston
92	Gallatin	92	Saline
93	Marion	93	Gallatin
94	St. Clair	94	Massac
95	Lawrence	95	St. Clair
96	Franklin	96	Jefferson
97	Pulaski	97	Pulaski
98	Saline	98	Marion
99	Alexander	99	Hardin
100	Edwards	100	Alexander
100	Hardin	101	Vermilion

## Health Factors Rankings

The summary health factors ranking is based on four factors: health behaviors, clinical care, social and economic, and physical environment factors. In turn, each of these factors is based on several measures. Health behaviors include measures of smoking, diet and exercise, alcohol use, and risky sex behavior. Clinical

care includes measures of access to care and quality of care. Social and economic factors include measures of education, employment, income, family and social support, and community safety. The physical environment includes measures of environmental quality and the built environment.

Rank	Health Behaviors	Rank	Clinical Care	Rank	Social & Economic Factors	Rank	Physical Environment
1	DuPage	1	Peoria	1	DuPage	1	Douglas
2	Lake	2	DuPage	2	Kendall	2	Brown
3	Cook	3	Sangamon	3	Monroe	2	Menard
4	Boone	4	Logan	4	Woodford	4	Greene
5	Kendall	5	Macon	5	McHenry	5	Woodford
6	Monroe	6	Alexander	6	Piatt	6	Clinton
7	McLean	7	Lee	7	McLean	7	Mason
8	Woodford	8	Adams	8	Will	8	Coles
9	Adams	9	St. Clair	9	Tazewell	9	Marshall
10	Henry	10	McLean	10	DeKalb	10	Henry
11	Coles	11	Stephenson	11	Lake	11	Carroll
12	DeKalb	12	Winnebago	12	Moultrie	12	Logan
13	Carroll	13	Williamson	13	Grundy	13	Bond
14	Clinton	14	Knox	14	Marshall	14	Macoupin
15	Will	15	Tazewell	15	McDonough	15	Scott
16	Bureau	16	Lake	16	Brown	16	Putnam
17	Shelby	17	Champaign	17	Jo Daviess	17	Union
18	Jo Daviess	18	Richland	18	Adams	18	Cass
19	Wabash	19	Kendall	19	Kane	19	Tazewell
20	Jersey	20	Pulaski	20	Jersey	20	Mercer
21	Hancock	21	Schuyler	21	Stark	21	Ogle
22	Lawrence	22	Ford	22	Douglas	22	Kankakee
23	Moultrie	23	Carroll	23	Menard	23	Washington
24	Piatt	24	Saline	24	Effingham	24	Piatt
25	Kane	25	Ogle	25	Warren	25	Kendall
26	Calhoun	26	Woodford	26	Livingston	26	Pike
27	Effingham	27	McHenry	27	Schuyler	27	Stark
28	Schuyler	28	Cook	28	Clinton	28	Livingston
29	McHenry	29	Monroe	29	Ford	29	De Witt
30	White	30	Randolph	30	Putnam	30	Whiteside
31	Mercer	31	Jackson	31	Champaign	31	Knox
32	Warren	32	Rock Island	32	Henry	32	Will
33	Douglas	33	Christian	33	Calhoun	33	Christian
34	Knox	34	Kankakee	34	Washington	34	Johnson
35	Montgomery	35	Union	35	Bureau	35	Iroquois
36	Jasper	36	Brown	36	Scott	36	Perry
37	Marshall	37	Livingston	37	De Witt	37	White
38	Ogle	38	Morgan	38	Shelby	38	Grundy
39	Edgar	39	Warren	39	Logan	39	Shelby
40	Putnam	40	Pike	40	Hancock	40	DeKalb

Rank	Health Behaviors	Rank	Clinical Care	Rank	Social & Economic Factors	Rank	Physical Environment
41	Ford	41	Kane	41	Ogle	41	Massac
42	Cumberland	42	Whiteside	42	Bond	42	Winnebago
43	Stark	43	De Witt	43	Jasper	43	McDonough
44	Clark	44	Mason	44	Morgan	44	Fulton
45	Christian	45	Hancock	45	Carroll	45	Monroe
46	Massac	46	Moultrie	46	Cass	46	Randolph
47	Edwards	47	Wabash	47	Mercer	47	Cumberland
48	Hamilton	48	Henry	48	Edwards	48	Fayette
49	Champaign	49	Coles	49	Coles	49	Edwards
50	Scott	50	Jefferson	50	Richland	50	Boone
51	Crawford	51	Will	51	Pike	51	Saline
52	Cass	52	Effingham	52	Madison	52	Montgomery
53	Winnebago	53	Clark	53	Henderson	53	Adams
54	Pike	54	Fulton	54	Cumberland	54	Henderson
55	Saline	55	Clinton	55	Wayne	55	Stephenson
56	Randolph	56	Crawford	56	Lee	56	Jo Daviess
57	Johnson	57	Madison	57	Randolph	57	LaSalle
58	Menard	58	Massac	58	Macoupin	58	Hancock
59	McDonough	59	Menard	59	White	59	Lee
60	De Witt	60	Bond	60	Fulton	60	Champaign
61	Rock Island	61	Boone	61	Iroquois	61	Clark
62	Fayette	62	Vermilion	62	Wabash	62	Vermilion
63	Wayne	63	Montgomery	63	Stephenson	63	Wayne
64	Clay	64	Piatt	64	Jefferson	64	Ford
65	Gallatin	65	Wayne	65	Rock Island	65	Bureau
66	Morgan	66	Franklin	66	Christian	66	Crawford
67	Greene	67	Perry	67	Whiteside	67	Moultrie
68	Stephenson	68	Edgar	68	Hamilton	68	Edgar
69	Washington	69	Douglas	69	Peoria	69	Morgan
70	Mason	70	White	70	Crawford	70	McHenry
71	Tazewell	71	Jo Daviess	71	Sangamon	71	Warren
72	Union	72	Grundy	72	Greene	72	Schuyler
73	Whiteside	73	Marion	73	Clark	73	Jasper
74	Bond	74	Jasper	74	Williamson	74	Clay
75	Henderson	75	Marshall	75	Clay	75	Jefferson
76	Hardin	76	McDonough	76	Edgar	76	McLean
77	Grundy	77	Macoupin	77	Johnson	77	Peoria
78	Richland	78	Mercer	78	Jackson	78	Jackson
79	Sangamon	79	Clay	79	Lawrence	79	Rock Island
80	Brown	80	Jersey	80	Massac	80	Macon
81	Iroquois	81	Edwards	81	Kankakee	81	Franklin
82	Perry	82	LaSalle	82	Boone	82	Lake
83	Lee	83	Cass	83	Mason	83	DuPage
84	Williamson	84	DeKalb	84	Knox	84	Kane
85	LaSalle	85	Iroquois	85	Fayette	85	Williamson
86	Peoria	86	Stark	86	Macon	86	Lawrence
87	Fulton	87	Bureau	87	LaSalle	87	Sangamon
88	Madison	88	Lawrence	88	Cook	88	Richland
89	Logan	89	Cumberland	89	Union	89	Marion
90	Pulaski	90	Calhoun	90	Montgomery	90	Pulaski

Rank	Health Behaviors	Rank	Clinical Care	Rank	Social & Economic Factors	Rank	Physical Environment
91	Franklin	91	Washington	91	Marion	91	Hardin
92	Marion	92	Johnson	92	Saline	92	Effingham
93	Livingston	93	Putnam	93	Perry	93	Gallatin
94	Jefferson	94	Scott	94	Winnebago	94	Alexander
95	Macoupin	95	Gallatin	95	Gallatin	95	Hamilton
96	Vermilion	96	Greene	96	Vermilion	96	Wabash
97	St. Clair	97	Henderson	97	St. Clair	97	St. Clair
98	Kankakee	98	Hardin	98	Franklin	98	Calhoun
99	Alexander	99	Shelby	99	Hardin	99	Jersey
100	Jackson	100	Fayette	100	Pulaski	100	Cook
101	Macon	101	Hamilton	101	Alexander	101	Madison

## 2010 County Health Rankings: Measures, Data Sources, and Years of Data

	Measure	Data Source	Years of Data
<b>HEALTH OUTCOMES</b>			
<b>Mortality</b>	Premature death	National Center for Health Statistics	2004-2006
<b>Morbidity</b>	Poor or fair health	Behavioral Risk Factor Surveillance System	2002-2008
	Poor physical health days	Behavioral Risk Factor Surveillance System	2002-2008
	Poor mental health days	Behavioral Risk Factor Surveillance System	2002-2008
	Low birthweight	National Center for Health Statistics	2000-2006
<b>HEALTH FACTORS</b>			
<b>HEALTH BEHAVIORS</b>			
<b>Tobacco</b>	Adult smoking	Behavioral Risk Factor Surveillance System	2002-2008
<b>Diet and Exercise</b>	Adult obesity	National Center for Chronic Disease Prevention and Health Promotion	2006-2008
<b>Alcohol Use</b>	Binge drinking	Behavioral Risk Factor Surveillance System	2002-2008
	Motor vehicle crash death rate	National Center for Health Statistics	2000-2006
<b>High Risk Sexual Behavior</b>	Chlamydia rate	National Center for Health Statistics	2006
	Teen birth rate	National Center for Health Statistics	2000-2006
<b>CLINICAL CARE</b>			
<b>Access to Care</b>	Uninsured adults	Small Area Health Insurance Estimates, U.S. Census	2005
	Primary care provider rate	Health Resources & Services Administration	2006
<b>Quality of Care</b>	Preventable hospital stays	Medicare/Dartmouth Institute	2005-2006
	Diabetic screening	Medicare/Dartmouth Institute	2003-2006
	Hospice use	Medicare/Dartmouth Institute	2001-2005
<b>SOCIOECONOMIC FACTORS</b>			
<b>Education</b>	High school graduation	National Center for Education Statistics <sup>1</sup>	2005-2006
	College degrees	U.S. Census/American Community Survey	2000/2005-2007
<b>Employment</b>	Unemployment	Bureau of Labor Statistics	2008
<b>Income</b>	Children in poverty	Small Area Income and Poverty Estimates, U.S. Census	2007
	Income inequality	U.S. Census/American Community Survey <sup>2</sup>	2000/2005-2007
<b>Family and Social Support</b>	Inadequate social support	Behavioral Risk Factor Surveillance System	2005-2008
	Single-parent households	U.S. Census/American Community Survey	2000/2005-2007
<b>Community Safety</b>	Violent crime <sup>3</sup>	Uniform Crime Reporting, Federal Bureau of Investigation	2005-2007
<b>PHYSICAL ENVIRONMENT</b>			
<b>Air Quality<sup>4</sup></b>	Air pollution-particulate matter days	U.S. Environmental Protection Agency / Centers for Disease Control and Prevention	2005
	Air pollution-ozone days	U.S. Environmental Protection Agency / Centers for Disease Control and Prevention	2005
<b>Built Environment</b>	Access to healthy foods	Census Zip Code Business Patterns	2006
	Liquor store density	Census County Business Patterns	2006

<sup>1</sup> State data sources for KY, NH, NC, PA, SC, and UT (2007-2008).

<sup>2</sup> Income inequality estimates for 2000 were calculated by Mark L. Burkey, North Carolina Agricultural & Technical State University, [www.ncat.edu/~burkeym/Gini.htm](http://www.ncat.edu/~burkeym/Gini.htm).

<sup>3</sup> Homicide rate (2000-2006) from National Center for Health Statistics for AK, AZ, AR, CO, CT, GA, ID, IN, IA, KS, KY, LA, MN, MS, MT, NE, NH, NM, NC, ND, OH, SD, UT, and WV. State data source for IL.

<sup>4</sup> Not available for AK and HI.

## CREDITS

### **Report Editors**

University of Wisconsin-Madison  
School of Medicine and Public Health  
Population Health Institute  
Bridget Booske, PhD, MHSA  
Jessica Athens, MS  
Patrick Remington, MD, MPH

This publication would not have been possible without the following contributions:

### **Conceptual Development**

David Kindig, MD, PhD  
Paul Peppard, PhD  
Patrick Remington, MD, MPH

### **Technical Advisors**

Amy Bernstein, ScD, Centers for Disease Control and Prevention  
Michele Bohm, MPH, Centers for Disease Control and Prevention  
Vickie Boothe, MPH, Centers for Disease Control and Prevention  
Ethan Burke, MD, MPH, Dartmouth Institute for Health Policy and Clinical Practice

### **Research Assistance**

Clare O'Connor  
Karen Odegaard  
Hyojun Park  
Matthew Rodock

### **Production and Editing**

Chuck Alexander  
Alex Field  
Joan Fischer  
Irene Golembiewski  
Jennifer Robinson

### **Design**

Forum One, Alexandria, VA  
Media Solutions, UW School of Medicine and Public Health

### **Metrics Advisory Group**

Yukiko Asada, PhD, Associate Professor, Community Health and Epidemiology, Dalhousie University, Halifax, Nova Scotia  
Tom Eckstein, MBA, Principal, Arundel Street Consulting Inc, St. Paul, MN  
Elliott Fisher, MD, MPH, Director, Center for Population Health, Dartmouth Institute for Health Policy and Clinical Practice, and  
Professor of Medicine and Community and Family Medicine, Dartmouth Medical School, Lebanon, NH  
Howard Frumkin, MD, MPH, Dr. PH, Director of the National Center for Environmental Health, ATSDR, CDC, Atlanta, GA  
Thomas Kottke, MD, MSPH, Medical Director for Evidence-Based Health, HealthPartners, Minneapolis, MN  
Ali Mokdad, PhD, Professor of Global Health, Institute for Health Metrics and Evaluation, University of Washington, Seattle, WA  
Roy Gibson Parrish, MD, Consultant in Population Health Information Systems, Peacham, VT  
Robert M. (Bobby) Pestronk, MPH, Executive Director, National Association of County and City Health Officials (NACCHO),  
Washington, DC  
Tom Ricketts, PhD, Professor of Health Policy and Administration, University of North Carolina  
Steven Teutsch, MD, MPH, Chief Science Officer, Los Angeles County Public Health, Los Angeles, CA  
Julie Willems Van Dijk, PhD, RN, former Marathon County, WI Health Officer

Suggested citation: University of Wisconsin Population Health Institute. *County Health Rankings 2010*.



# County Health Rankings

Mobilizing Action Toward Community Health

[countyhealthrankings.org](http://countyhealthrankings.org)

